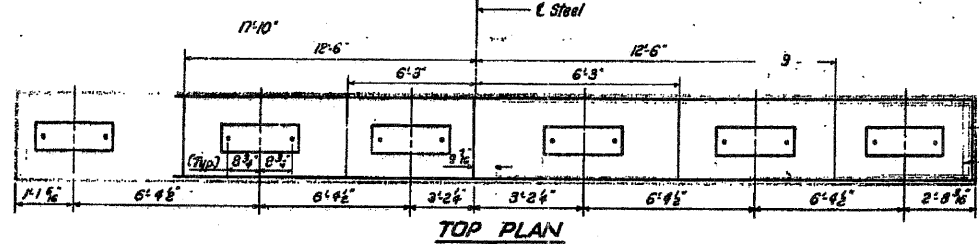
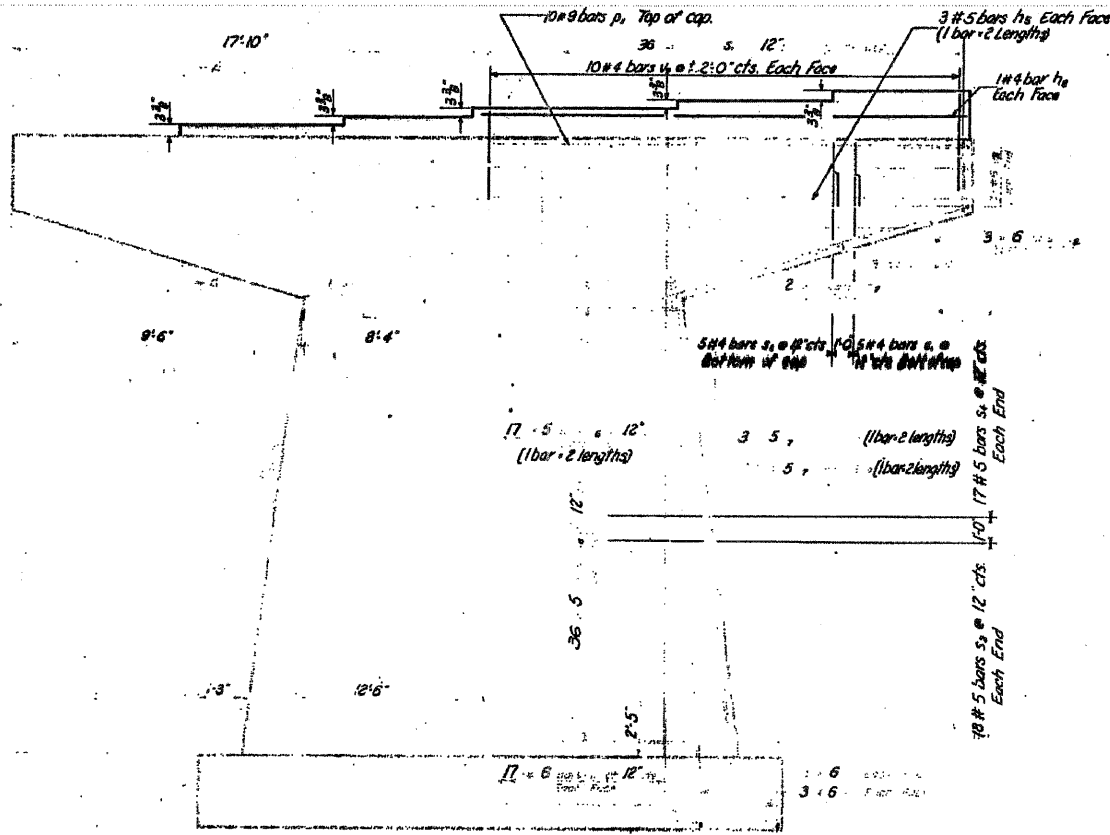


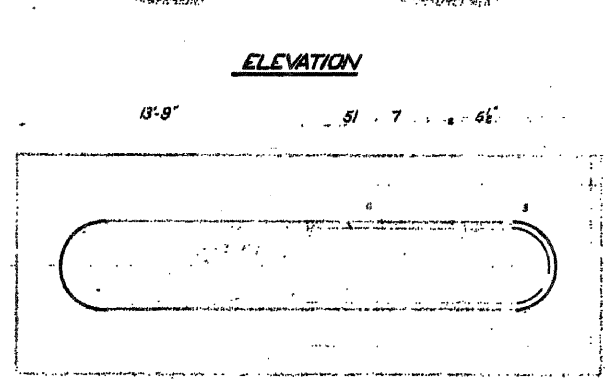
END VIEW



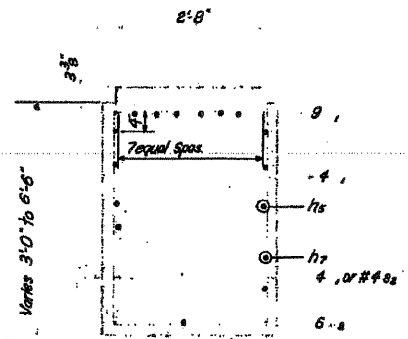
TOP PLAN



ELEVATION



FOOTING PLAN

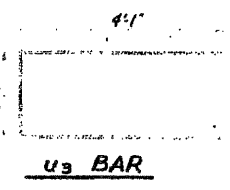
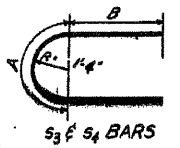


SECTION A-A

S, E, S₂ BARS
A & B DIMENSIONS

1	2'-8"	2'-9"
2	2'-8"	4'-5"
3	4'-2"	4'-8"
4	4'-2"	3'-2"

S, S₂, S₃ & S₄ BARS



PIER #2
NORTH & SOUTH STRUCTURES
BILL OF MATERIAL

s	24	# 5	18'-3"
6	144	# 5	15'-6"
h ₇	16	# 5	15'-9"
h ₈	4	# 4	18'-3"
	104	# 6	4'-9"
1	20	# 9	35'-3"
2	12	# 6	11'-0"
3	92	# 4	8'-0"
4	20	# 4	11'-6"
5	72	# 5	13'-6"
6	68	# 5	10'-6"
7	102	# 7	11'-9"
8	12	# 6	10'-9"
9	136	# 5	21'-0"
10	72	# 5	19'-3"
11	40	# 4	2'-9"
12	16	# 4	14'-0"
X			255.6
			16,270

PIER #2
NORTH & SOUTH STRUCTURE
LITTLE MEMOMINEE RIVER
S.B.I. RT.5 SEC. 44-B
JO DAVIESS COUNTY
STA. 318 + 30

DESIGNED: *Tom R. Smith*
CHECKED: *T. T. Tamm*
DRAWN: *Tom R. Smith*
DATE: *DEC. 4 1959*