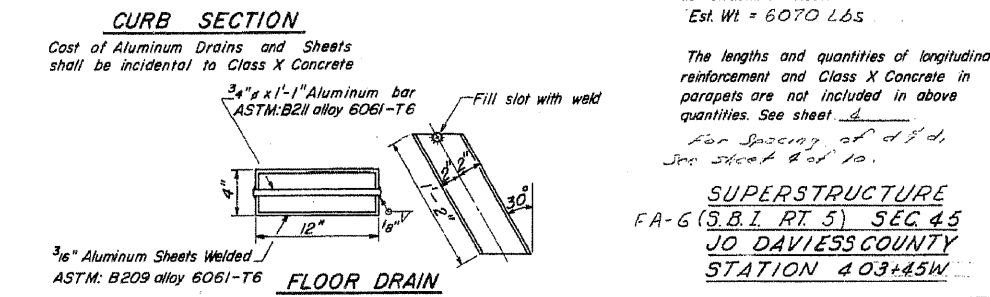
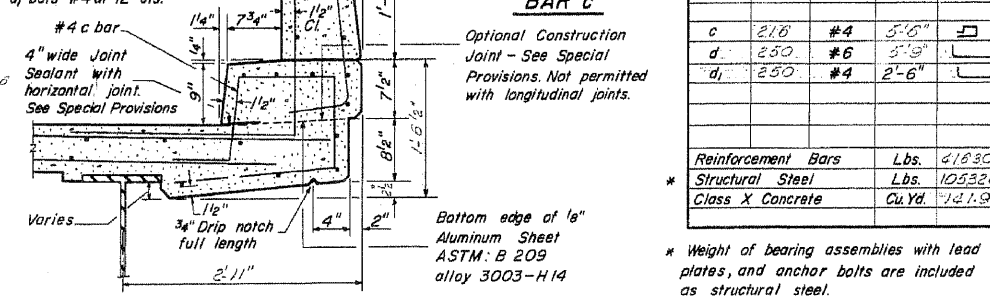
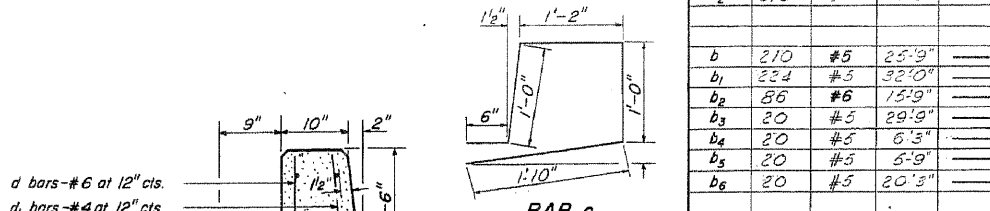
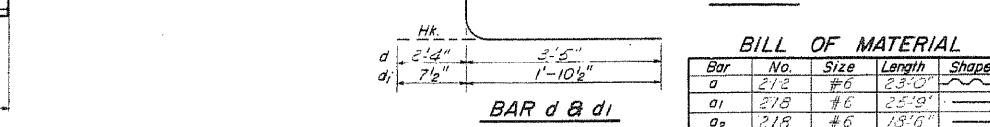
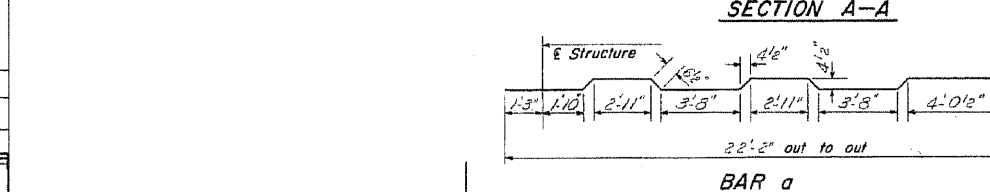
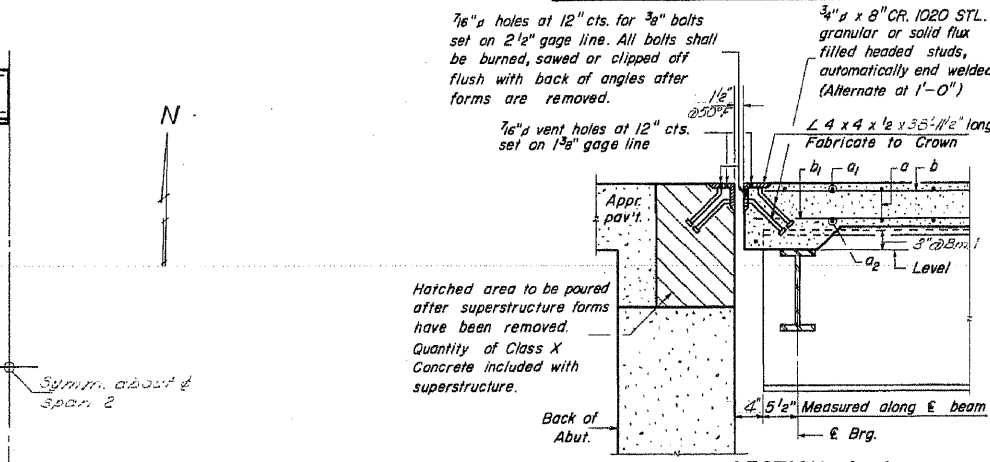
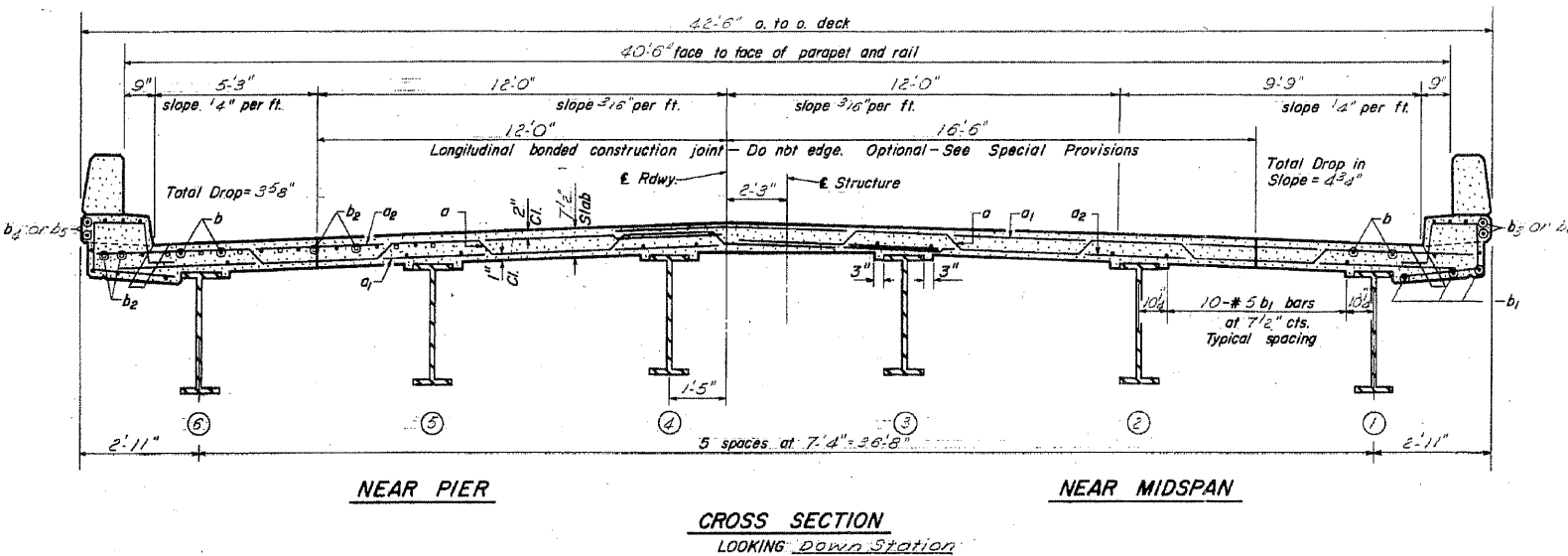
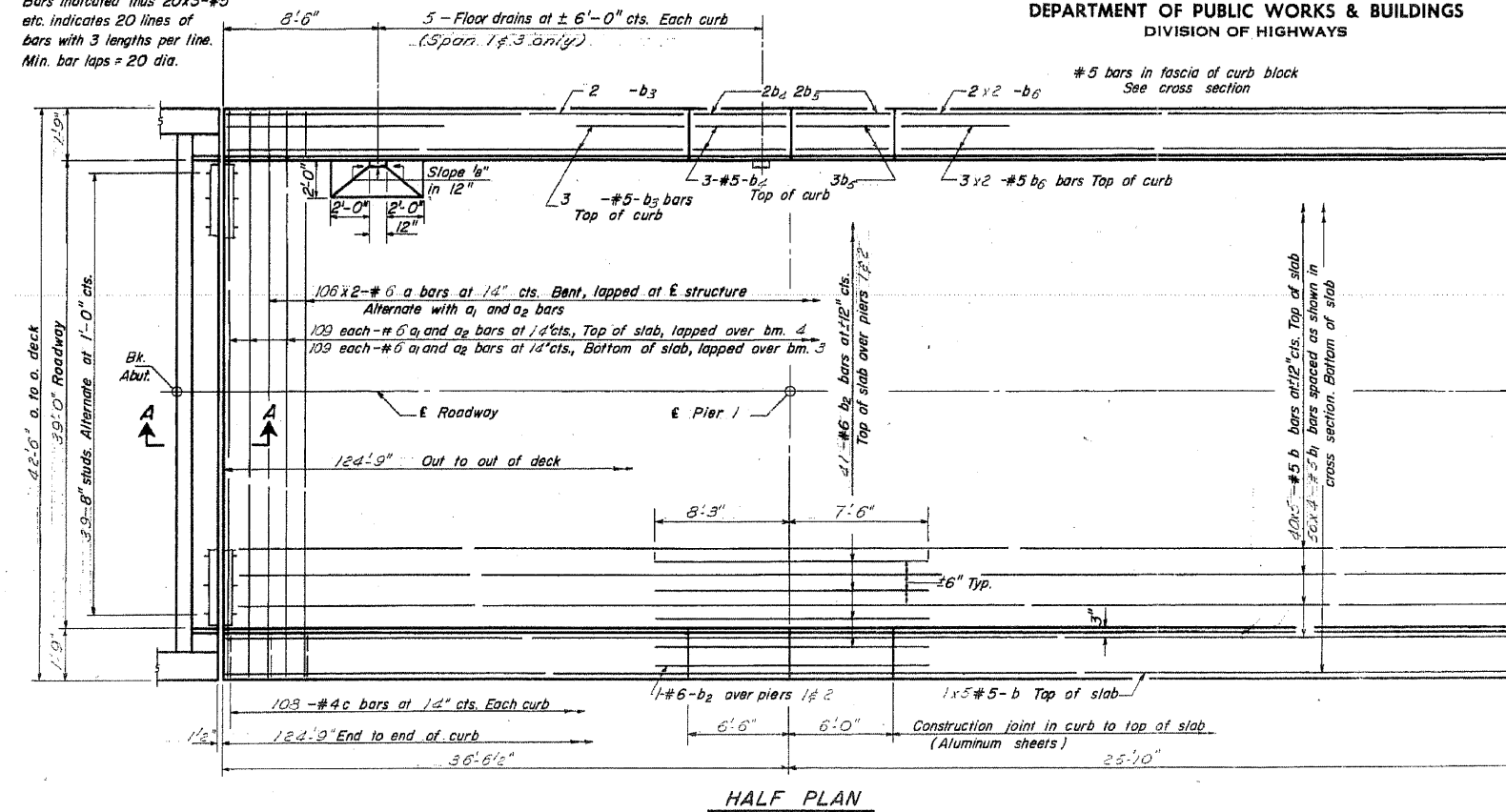


STATE OF ILLINOIS
DEPARTMENT OF PUBLIC WORKS & BUILDINGS
DIVISION OF HIGHWAYS

ROUTE NO.	SECTION	COUNTY	TOTAL SHEETS	SHEET NO.	SHEET NO.
444B	44,45	JO DAVIESS	376	58	10 SHEETS

Note:
Bars indicated thus 20x3-#5
etc. indicates 20 lines of
bars with 3 lengths per line.
Min. bar laps = 20 dia.



BILL OF MATERIAL				
Bar	No.	Size	Length	Shape
a	212	#6	23'-0"	—
a1	218	#6	25'-0"	—
a2	218	#6	18'-6"	—
b	210	#5	25'-9"	—
b1	234	#5	32'-0"	—
b2	86	#6	15'-9"	—
b3	20	#5	29'-9"	—
b4	20	#5	6'-3"	—
b5	20	#5	5'-9"	—
b6	20	#5	20'-9"	—
c	216	#4	5'-6"	—
d	250	#6	3'-9"	—
d1	250	#4	2'-6"	—
Reinforcement Bars			Lbs.	41930
Structural Steel			Lbs.	105320
Class X Concrete			Cu Yd.	121.9

DESIGNED: *[Signature]*
CHECKED: *[Signature]*
DRAWN: *[Signature]*
EXAMINED: *[Signature]*
PASSED: *[Signature]*
APPROVED: *[Signature]*

I-6-0 8-1-65 Rev. 1-11-66

WHKS & CO.
ENGINEERING
7018 KINGSMILL CT.,
SPRINGFIELD, IL
(217) 483-9457
DESIGN FIRM #184001036

STATE OF ILLINOIS
DEPARTMENT OF TRANSPORTATION

EXISTING PLANS
STRUCTURE NO. 043-0006
SHEET NO. 4 OF 11 SHEETS

F.A.P. RTE.	SECTION	COUNTY	TOTAL SHEETS	SHEET NO.
301	(43B, 44B, 44HB, 45BID)	JO DAVIESS	309	213
				CONTRACT NO. 64C94

ILLINOIS FED. AID PROJECT