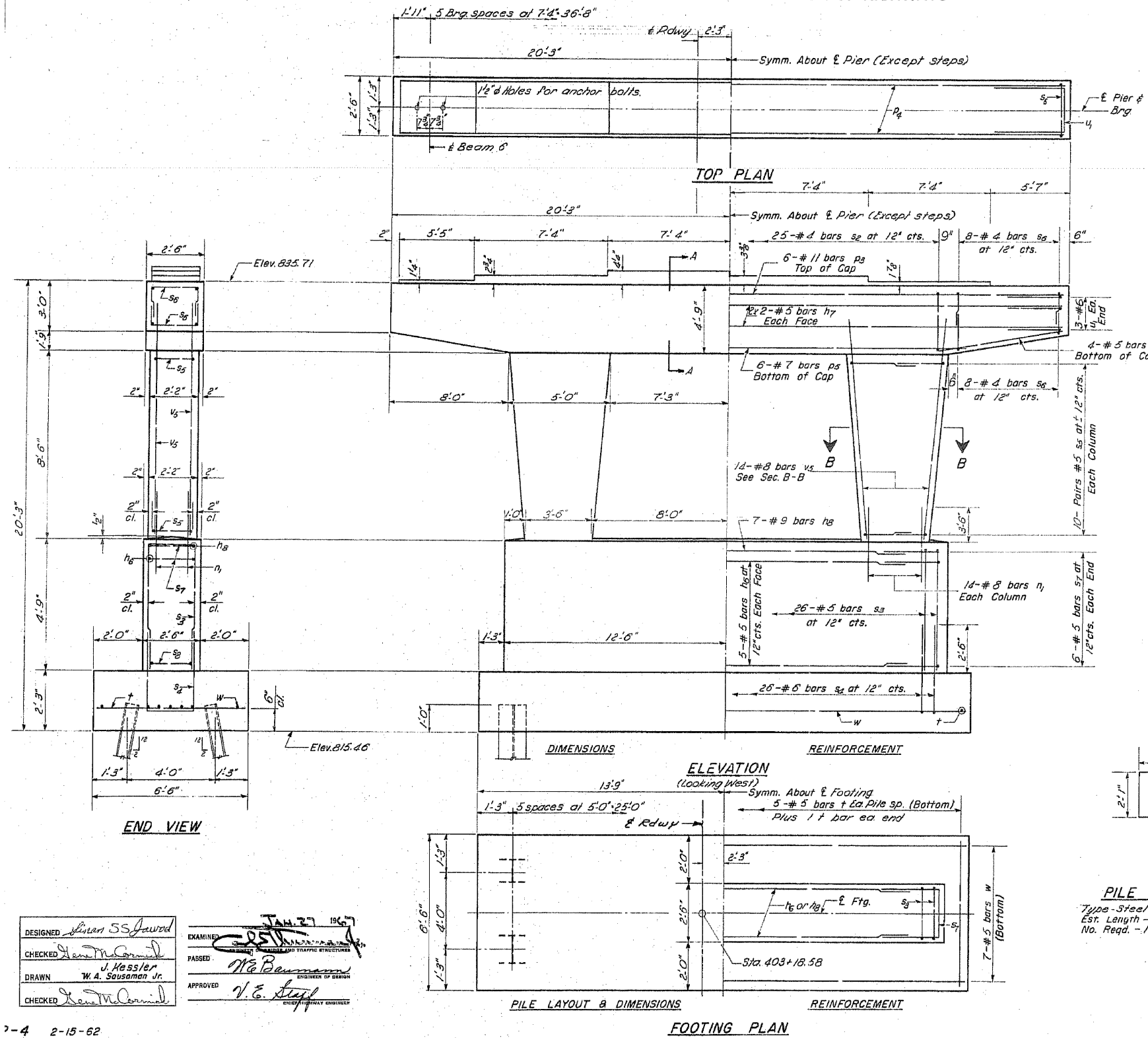
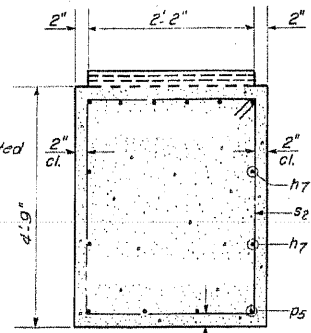


STATE OF ILLINOIS
DEPARTMENT OF PUBLIC WORKS & BUILDINGS
DIVISION OF HIGHWAYS

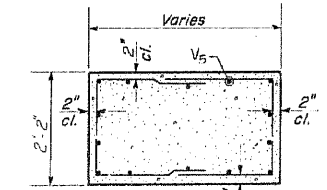
ROUTE NO.	SECTION	COUNTY	TOTAL SHEETS	SHEET NO.
44HB	44A45	JO DAVIESS	376	63
SHEET NO. 8				
10 SHEETS				



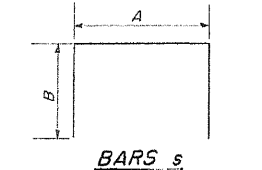
Note:
Space reinforcement in cap to miss anchor bolts.
Min. bar laps = 20 dia. unless otherwise noted.
All edges shall have standard 3/4" Chamfers, except as noted.
Pour steps monolithically with cap.



SECTION A-A



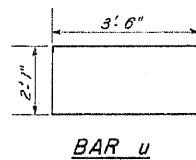
SECTION B-B



A & B DIMENSIONS

Bar	A	B
s2	2'-2"	4'-5"
s3	2'-2"	4'-3"
s4	1'-0"	3'-1"
s5	2'-2"	2'-9"
s6	2'-2"	1'-3"
s7		

BAR s2



BAR u

PILE DATA
Type - Steel (BB36)
Est. Length - 25'
No. Req. - 12

BILL OF MATERIAL

Bar	No.	Size	Length	Shape
n6	10	#5	24'-9"	□
n7	8	#5	20'-9"	□
n8	7	#9	24'-9"	□
n1	28	#8	7'-0"	□
p3	6	#11	40'-9"	□
p4	8	#5	8'-0"	□
p5	6	#7	24'-6"	□
s2	25	#4	13'-11"	□
s3	26	#5	11'-0"	□
s4	26	#6	10'-8"	□
s5	40	#5	8'-0"	□
s6	32	#4	7'-8"	□
s7	12	#5	4'-8"	□
t	27	#5	6'-3"	□
u1	6	#6	9'-1"	□
v5	28	#8	11'-3"	□
w	7	#5	27'-3"	□

Class X Concrete Cu. Yds. 48.9
Reinforcement Bars Lbs. 6000
Steel Piles (BB36) Lin. Ft. 300

PIER 1
FA 6 (S.B.I. RT 5) SEC. 45
JO DAVIESS COUNTY
STATION 403+45W

DESIGNED: *Leon S. Jaworski*
CHECKED: *Leon S. Jaworski*
DRAWN: *J. Hessler, W. A. Sausaman Jr.*
EXAMINED: *W. E. Baumann*
APPROVED: *V. E. Seif*

7-4 2-15-62