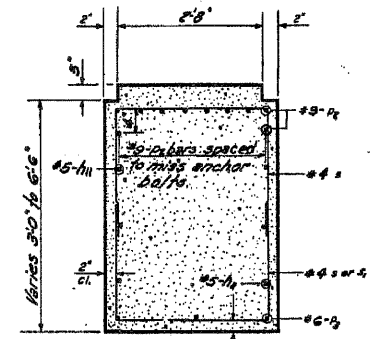
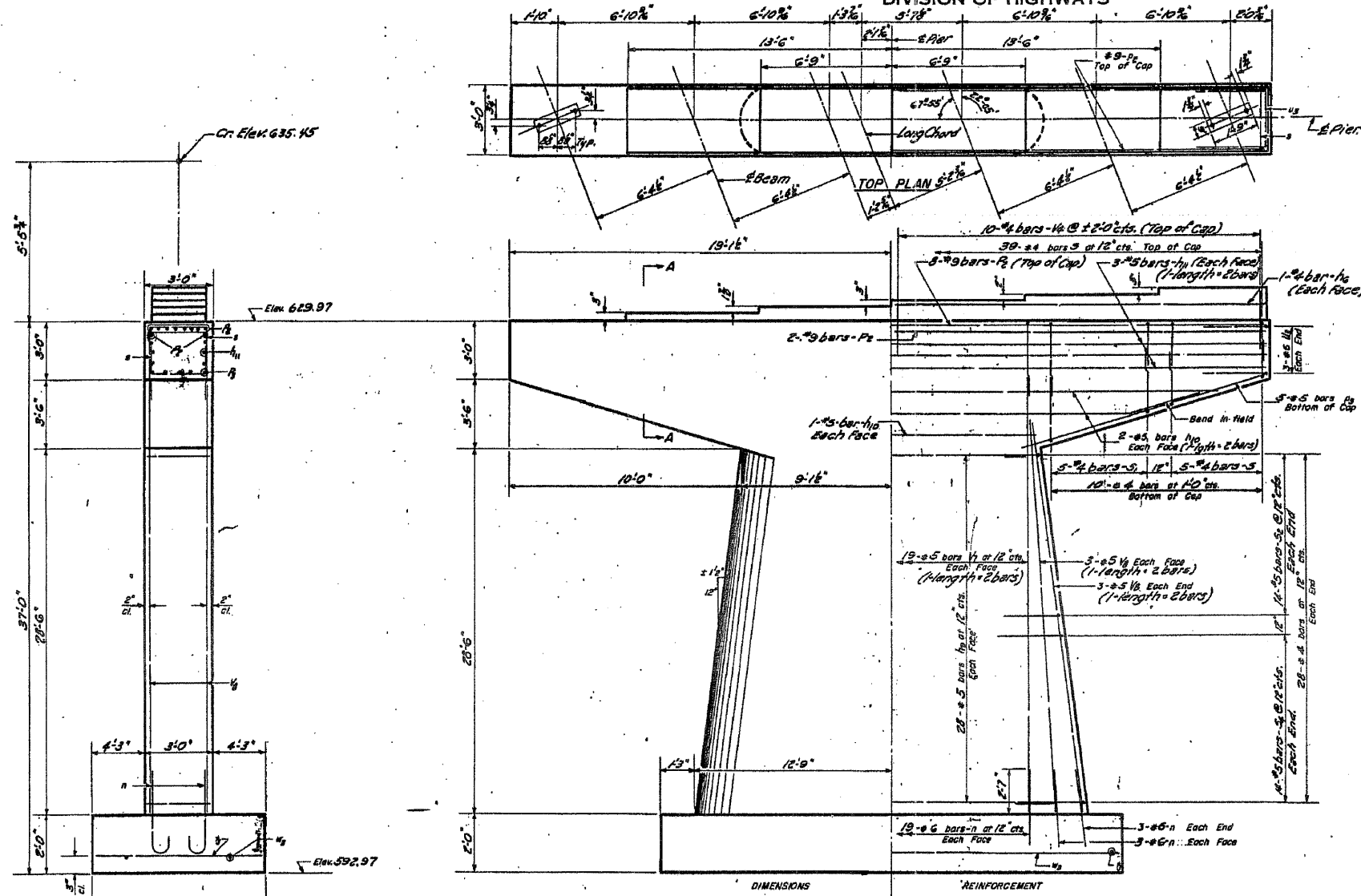
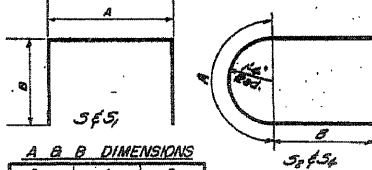


STATE OF ILLINOIS  
DEPARTMENT OF PUBLIC WORKS & BUILDINGS  
DIVISION OF HIGHWAYS

ROUTE NO.	SECTION	COUNTY	TOTAL SHEETS	SHEET NO.
45A+B	JO DAVIESS	166	25	11 SHEETS

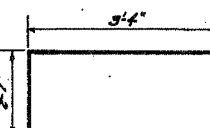


Note: All edges shall have standard 1/2" chamfers except footings

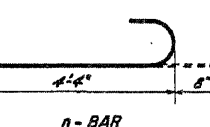


Bar	A	B
s	2'-8"	2'-8"
s <sub>1</sub>	2'-8"	4'-5"
s <sub>2</sub>	4'-2"	3'-2"
s <sub>3</sub>	4'-2"	4'-5"

5, 5<sub>1</sub>, 5<sub>2</sub>, 5<sub>3</sub> - BARS



U-BAR



N-BAR

PIER 2  
BILL OF MATERIAL

Bar	No.	Size	Length	Shape
h <sub>0</sub>	2	#4	19'-0"	—
h <sub>1</sub>	56	#5	15'-0"	—
h <sub>2</sub>	8	#5	16'-0"	—
h <sub>3</sub>	12	#5	19'-9"	—
h <sub>4</sub>	2	#5	18'-0"	—
n	56	#6	5'-0"	U
r <sub>1</sub>	10	#9	38'-0"	—
r <sub>2</sub>	10	#5	1'-6"	—
s	49	#4	8'-0"	□
s <sub>1</sub>	10	#4	1'-6"	—
s <sub>2</sub>	28	#5	10'-6"	C
s <sub>3</sub>	28	#5	13'-6"	C
u	56	#6	11'-3"	—
v <sub>1</sub>	6	#6	9'-3"	—
v <sub>2</sub>	20	#6	2'-3"	—
v <sub>3</sub>	76	#5	16'-9"	—
v <sub>4</sub>	56	#5	15'-3"	—
v <sub>5</sub>	10	#4	14'-6"	—
Class X Concrete			Cu. Yd.	121.7
Reinforcement Bars			Lb.	7230

PIER No. 2  
SINSINAWA RIVER  
S.B.I. RT. 5 SEC. 45-B  
JO DAVIESS COUNTY  
STA. 468+35

DESIGNED: *A. A. Smith*  
CHECKED: *Carlton*  
DRAWN: *W. A. S. ENRUSH*  
CHECKED: *Carlton*

EXAMINED: *W. B. Bauman*  
PASSED: *W. A. S. ENRUSH*  
APPROVED: *W. A. S. ENRUSH*

AUG 25 1961

P-2 DRAWN 4-9-57