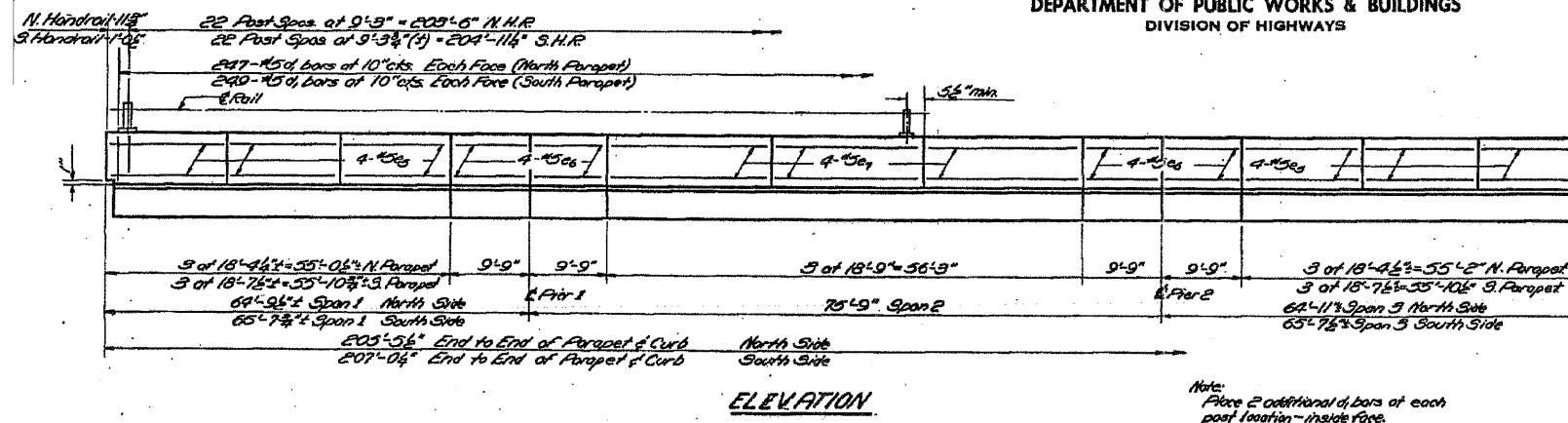


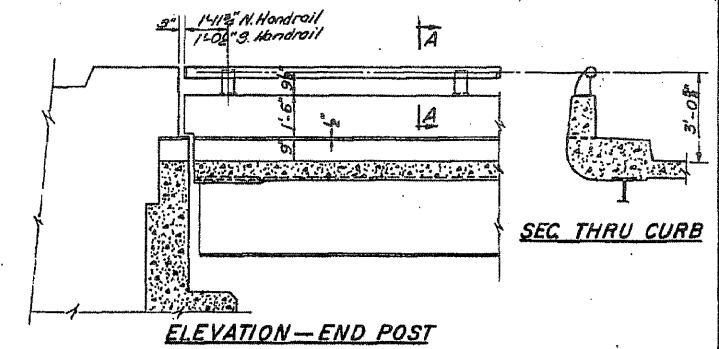
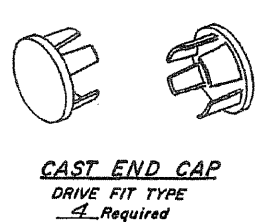
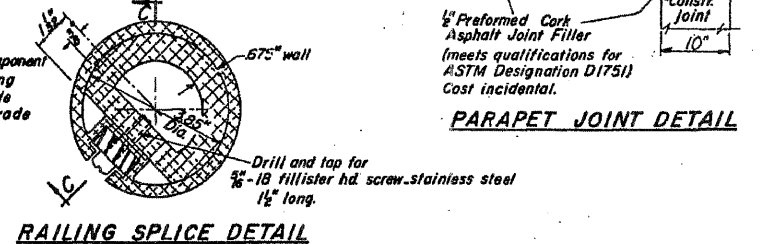
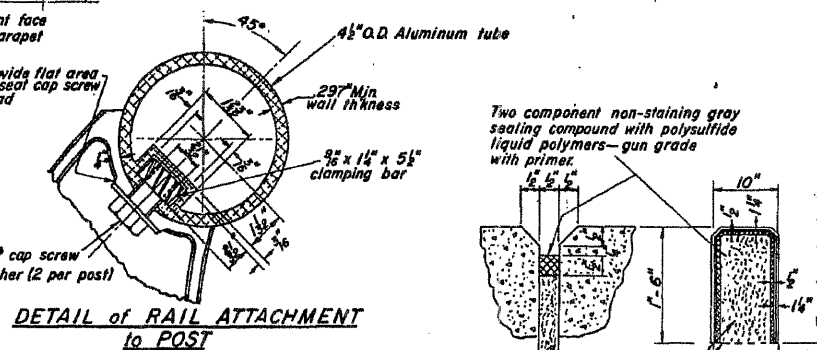
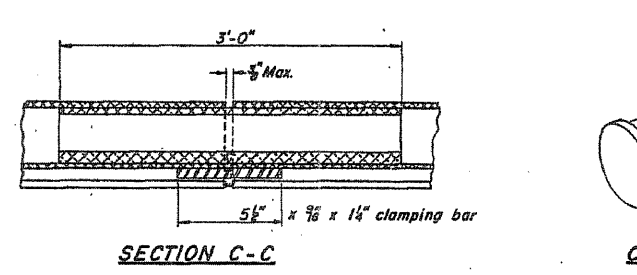
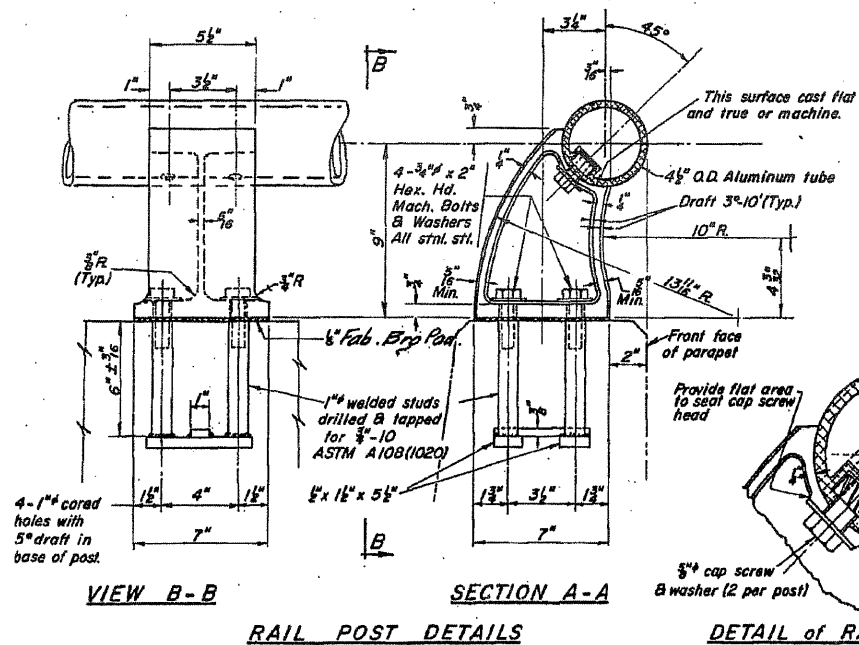
STATE OF ILLINOIS
DEPARTMENT OF PUBLIC WORKS & BUILDINGS
DIVISION OF HIGHWAYS

PROJECT NO.	SECTION	COUNTY	TOTAL SHEETS	SHEET NO.	SHEET NO.
45A1B	JO DAVIESS	166	29	11	SHEETS



BAR LISTS

Bar	No	Size	Length	Shape
S ₁	48	#5	18'-2"	
E ₆	32	#5	9'-6"	
C ₇	24	#5	18'-6"	
D	1082	#5	2'-0"	



NOTES:

All Posts shall be normal to parapet.

All Aluminum Alloy Extruded Rail shall conform to ASTM specification B-235 alloy 6061-T6, or 6062-T6, and shall extend a minimum of 2 panel lengths (attached to a minimum of 3 posts) except at ends or at open joints where a minimum of 1 panel length is required. All joints in railing must be spliced per detail.

See Special Provisions for following Material Specifications:
Cast Aluminum Alloy Bridge Post Alloy 344-T4.
Stainless Steel Machine Bolts, Washers, and Bars.
Fabric Bearing Pads.

BILL of MATERIAL

Item	Unit	Quantity
ALUMINUM HANDRAIL	Lin. Ft.	472
Reinforcement Bars	Lbs.	4800

METHOD of MEASUREMENT: Aluminum handrail shall be measured in lineal feet. The length paid for shall be the over all length along the top longitudinal railing member thru all posts and gaps.

BASIS of PAYMENT: Aluminum handrail shall be paid for at the contract unit price per lineal foot for ALUMINUM HANDRAIL, measured as specified, which price shall be payment in full for all materials, fabrication, transportation, and erection.

Cost of rail splice, end caps, and hardware to be incidental to item ALUMINUM HANDRAIL.

Provide 1 - 1/8" and 2 - 1/8" Aluminum Shims for 25% of the Posts. Rail element shall be parallel to Grade - high spots shall be ground and low spots shimmed.

ALUMINUM HANDRAIL
SINAIANAWA RIVER
S.B.I. RT.5 ~ SEC. 45B
JO DAVIESS COUNTY
STATION 468+35

DESIGNED	J. Kaspar	EXAMINED	
CHECKED	J. W. N.	PASSED	
DRAWN	Wm. M. Best	APPROVED	
CHECKED	J. W. N.		

R-19 Dwn. 6-26-64 Rev. 8-26-64 9-2-64