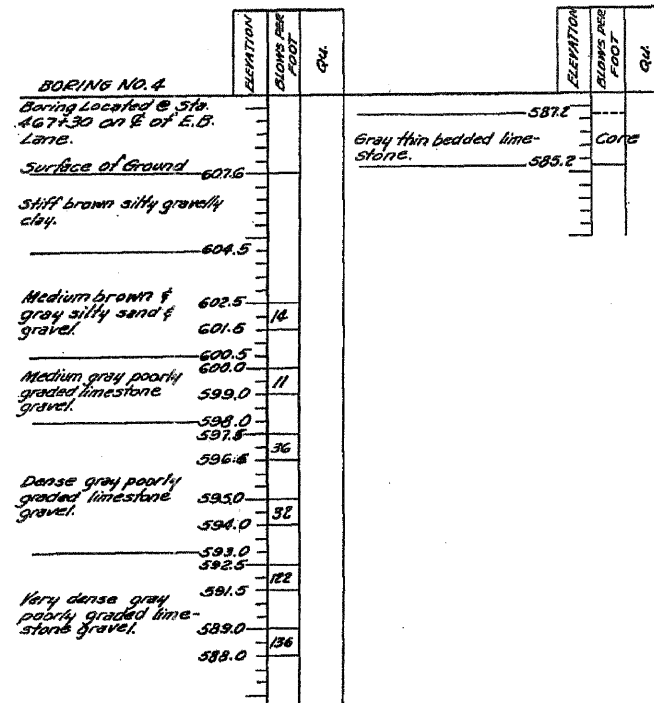
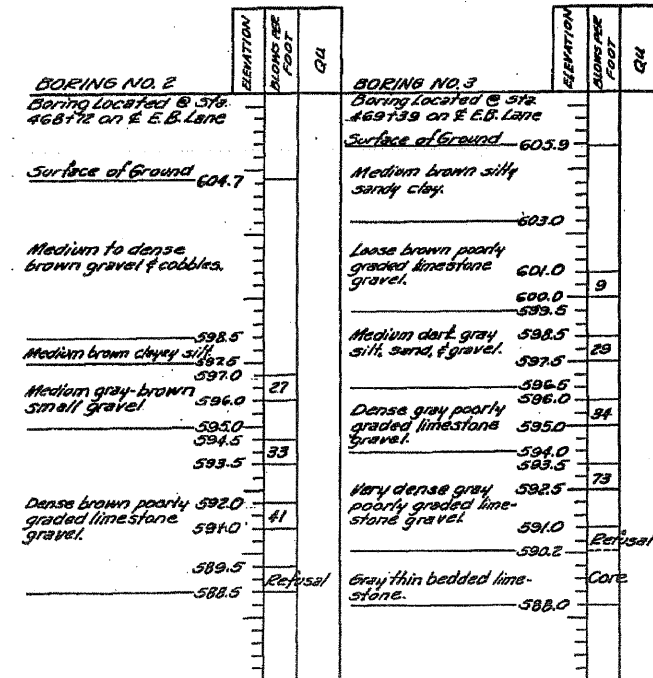
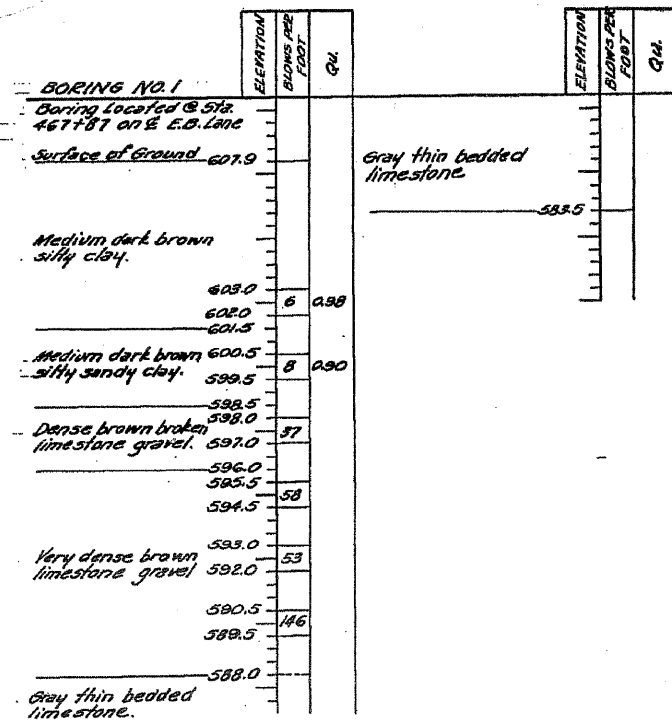


STATE OF ILLINOIS
DEPARTMENT OF PUBLIC WORKS & BUILDINGS
DIVISION OF HIGHWAYS

DATE	BY	CHKD	TOTAL SHEETS	SHEET NO.
8/11/61	JQ DAVIESS	166	21	11
SHEET NO. 17				
11 SHEETS				



NOTE:
N = Blows per foot of penetration of sampling spoon. Hammer Weight = 350 Lbs. Drop = 12 inches.
Qu = Unconfined compressive strength in tons per square foot.

DESIGNED *H. A. Smith*
CHECKED *C. J. Smith*
DRAWN *E. R.*
CHECKED *C. J. Smith*

EXAMINED *W. E. Bannerman*
PASSED *C. J. Smith*
APPROVED *R. H. Bannerman*

AUG 25 1961

BORING DATA
SINSINAWA RIVER
S.B.I. Rt. 5 Sec 45-B
JO DAVIESS COUNTY
STA. 468+35