

F.A.P. RTE.	SECTION	COUNTY	TOTAL SHEETS	SHEET NO.
742	39M-2	LEE	25	1

STATE OF ILLINOIS  
DEPARTMENT OF TRANSPORTATION  
DIVISION OF HIGHWAYS  
**PROPOSED  
HIGHWAY PLANS**

FAP ROUTE 742 (IL 2)  
SECTION 39M-2

LEE COUNTY

C-92-151-10

D-92-128-07



LOCATION OF SECTION INDICATED THUS: - [shaded rectangle] -

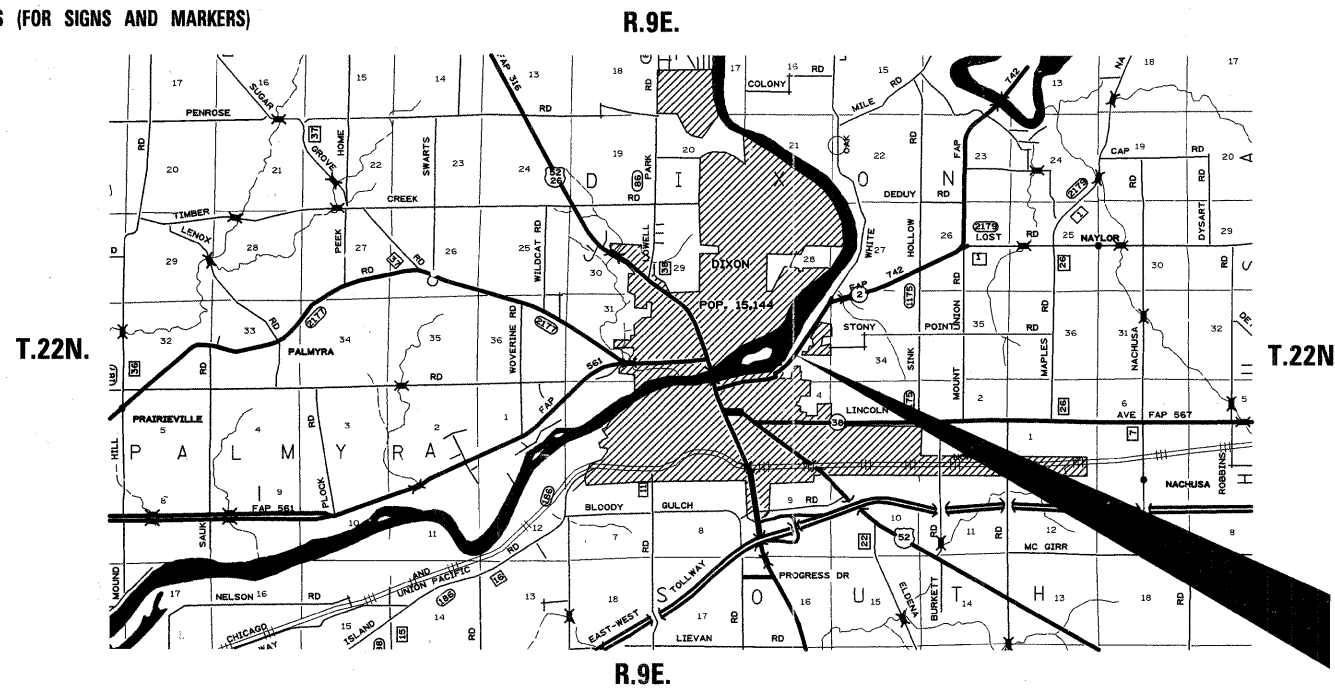


**INDEX OF SHEETS**

- 1 COVER SHEET, INDEX AND STANDARDS
- 2 SUMMARY OF QUANTITIES
- 3 GENERAL NOTES
- 4 - 5 TYPICAL SECTIONS
- 6 SCHEDULE OF QUANTITIES
- 7 EARTHWORK SCHEDULE
- 8 - 11 HORIZONTAL AND VERTICAL CONTROL
- 12 - 13 PLAN AND PROFILE SHEETS
- 14 - 15 EROSION CONTROL SHEETS
- 16 LANE CLOSURE DETAIL  
STAY IN YOUR LANE SIGN DETAILS (40.2)
- 17 WITNESS MARKER & PERMANENT SURVEY MARKERS, TYPE II (66.2)
- 18 DETAILS OF PLANTING AND BRACING TREES (92.1)
- 19 - 25 CROSS-SECTIONS

**STANDARDS**

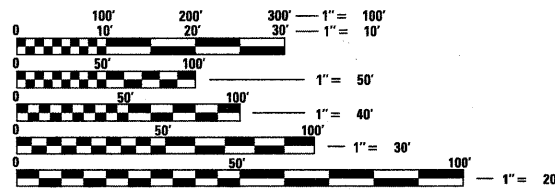
- 000001-06 STANDARD SYMBOLS, ABBREVIATIONS AND PATTERNS
- 001006 DECIMAL OF AN INCH AND OF A FOOT
- 280001-06 TEMPORARY EROSION CONTROL SYSTEMS
- 667001-01 DRAINAGE MARKERS
- 701001-02 OFF-ROAD OPERATIONS, 2L, 2W, MORE THAN 4.5 M (15') AWAY
- 701006-03 OFF-ROAD OPERATIONS, 2L, 2W, 4.5 M (15') TO 600 MM (24") FROM PAVEMENT EDGE
- 701606-08 URBAN LANE CLOSURE, MULTILANE, 2W WITH MOUNTABLE MEDIAN
- 701901-02 TRAFFIC CONTROL DEVICES
- 720011-01 METAL POSTS FOR SIGNS, MARKERS AND DELINEATORS
- 728001-01 TELESCOPING STEEL SIGN SUPPORT
- 729001-01 APPLICATIONS OF TYPES A AND B METAL POSTS (FOR SIGNS AND MARKERS)



**IMPROVEMENT /  
SECTION BEGINS  
STA. 10 + 32.00**

RE-ESTABLISHMENT OF A DRAINAGE DITCH  
ALONG IL 2 ON THE EAST SIDE OF DIXON

**IMPROVEMENT /  
SECTION ENDS  
STA. 21 + 20.00**



FULL SIZE PLANS HAVE BEEN PREPARED USING STANDARD ENGINEERING SCALES. REDUCED SIZED PLANS WILL NOT CONFORM TO STANDARD SCALES. IN MAKING MEASUREMENTS ON REDUCED PLANS, THE ABOVE SCALES MAY BE USED.

J.U.L.I.E.  
JOINT UTILITY LOCATION INFORMATION FOR EXCAVATION  
1-800-892-0123

DIXON TOWNSHIP, SECTION 33

GROSS LENGTH OF PROJECT = 1,088 LIN. FT. = 0.20 MILES  
NET LENGTH OF PROJECT = 1,088 LIN. FT. = 0.20 MILES

STATE OF ILLINOIS  
DEPARTMENT OF TRANSPORTATION  
DIVISION OF HIGHWAYS

SUBMITTED December 8, 2011  
Eric S. [Signature]  
DEPUTY DIRECTOR OF HIGHWAYS, REGION ENGINEER

February 3, 2012  
John B. [Signature]  
ENGINEER OF DESIGN AND ENVIRONMENT

February 3, 2012  
William R. [Signature]  
DIRECTOR OF HIGHWAYS, CHIEF ENGINEER

**PRINTED BY THE AUTHORITY  
OF THE STATE OF ILLINOIS**

PROJECT ENGINEER: REBECCA MARRUFFO

SENIOR SQUAD LEADER: KEVIN HENSON (815)-284-5971

CONTRACT NO. 64D77