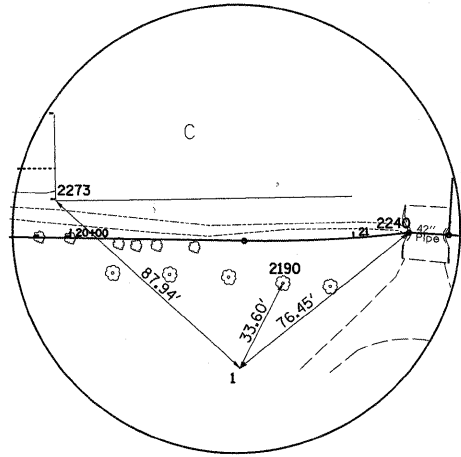
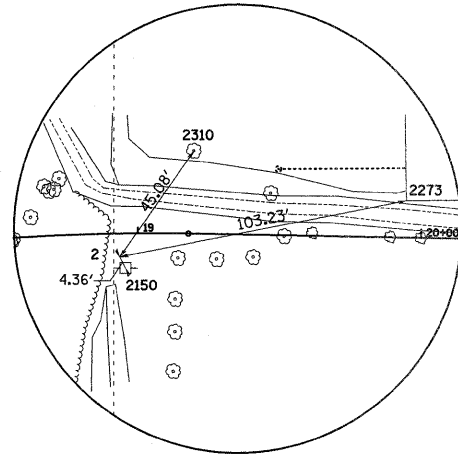


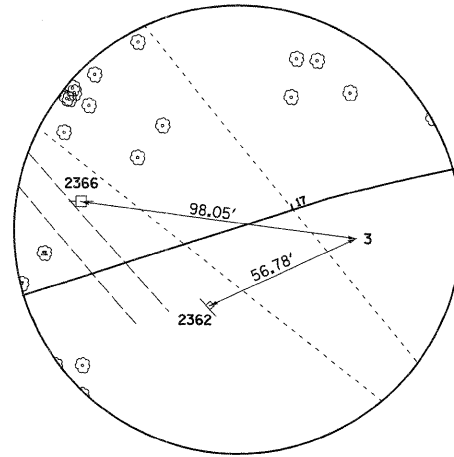
HORIZONTAL & VERTICAL CONTROL



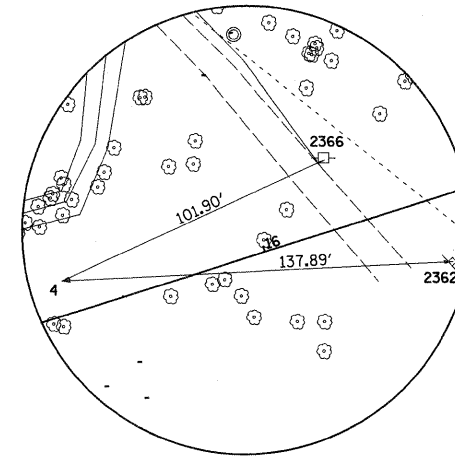
HORIZONTAL CONTROL POINT NO. 1



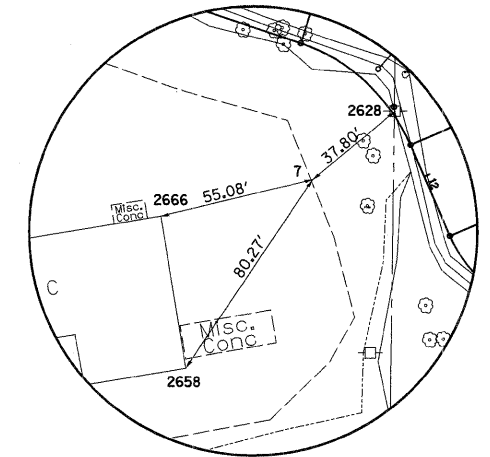
HORIZONTAL CONTROL POINT NO. 2



HORIZONTAL CONTROL POINT NO. 3

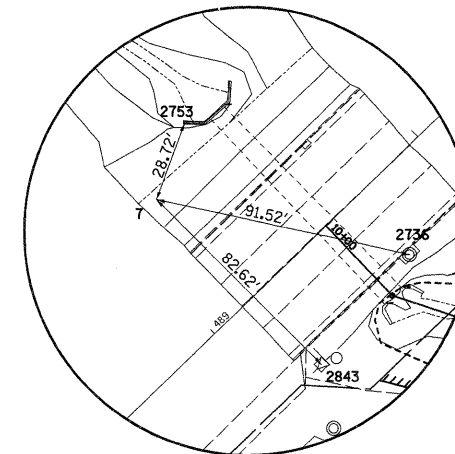


HORIZONTAL CONTROL POINT NO. 4

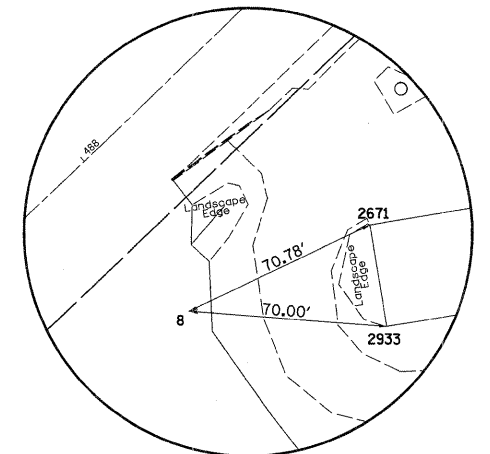


HORIZONTAL CONTROL POINT NO. 6

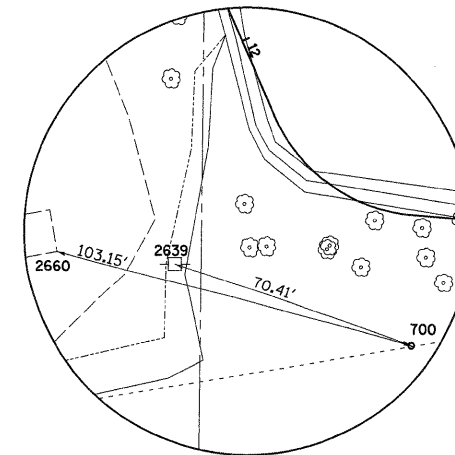
REFERENCE TIES						
POINT	NORTH	EAST	CHAIN	STATION	OFFSET	DESCRIPTION
2150	1887726.8609	2487629.6398	PSTREAM	18+95.4179	12.2378' RT	POWER POLE
2190	1887723.7689	2487789.8714	PSTREAM	20+56.0560	12.8865' RT	TREE DECIDUOUS
2240	1887739.3715	2487853.5768	PSTREAM	21+19.6484	0.0000'	PIPE CULVERT
2273	1887750.7313	2487728.8878	PSTREAM	19+94.6140	13.0143' LT	COMMERCIAL BUILDING
2310	1887768.2774	2487653.7068	PSTREAM	19+19.1400	29.2541' LT	TREE DECIDUOUS
2362	1887676.3903	2487407.6970	PSTREAM	16+61.9455	23.3366' RT	WARNING SIGN
2366	1887712.9928	2487362.1544	PSTREAM	16+29.6673	25.3665' LT	POWER POLE
2596	1887710.5238	2486986.6154	PSTREAM	11+65.7722	35.1452' LT	TREE DECIDUOUS
2598	1887687.9189	2486998.0767	PSTREAM	11+82.3348	31.18' LT	COMMERCIAL BUILDING
2626	1887663.1960	2487019.1201	PSTREAM	12+10.7392	40.2584' LT	COMMERCIAL BUILDING, END
2628	1887679.9157	2486967.6089	FA561_742	490+08.1691	162.5569' RT	POWER POLE
2658	1887589.0067	2486893.9620	FA561_742	488+91.9996	176.4479' RT	COMMERCIAL BUILDING, BEGINNING
2660	1887597.9432	2486925.8429	PSTREAM	12+26.9987	71.7747' RT	MISC. CONCRETE SLAB
2666	1887642.7662	2486885.0110	FA561_742	489+23.0381	131.6504' RT	COMMERCIAL BUILDING
2671	1887629.3080	2486805.7511	FA561_742	488+56.8092	86.0764' RT	COMMERCIAL BUILDING, END
2639	1887594.4617	2486959.0209	PSTREAM	12+36.5740	46.2616' RT	POWER POLE
2736	1887749.2295	2486845.5711	FA561_742	489+68.9309	27.8053' RT	MANHOLE LID
2753	1887795.6463	2486766.0921	FA561_742	489+44.2649	60.8684' LT	HEADWALL, CONCRETE
2933	1887593.3507	2486811.7405	FA561_742	488+36.0507	116.0412' RT	COMMERCIAL BUILDING, BEGINNING



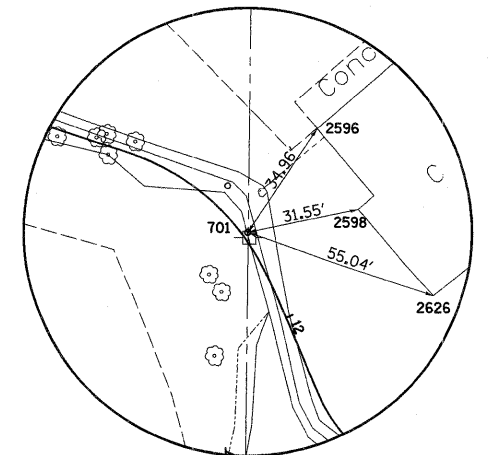
HORIZONTAL CONTROL POINT NO. 7



HORIZONTAL CONTROL POINT NO. 8



HORIZONTAL CONTROL POINT NO. 700



HORIZONTAL CONTROL POINT NO. 701