

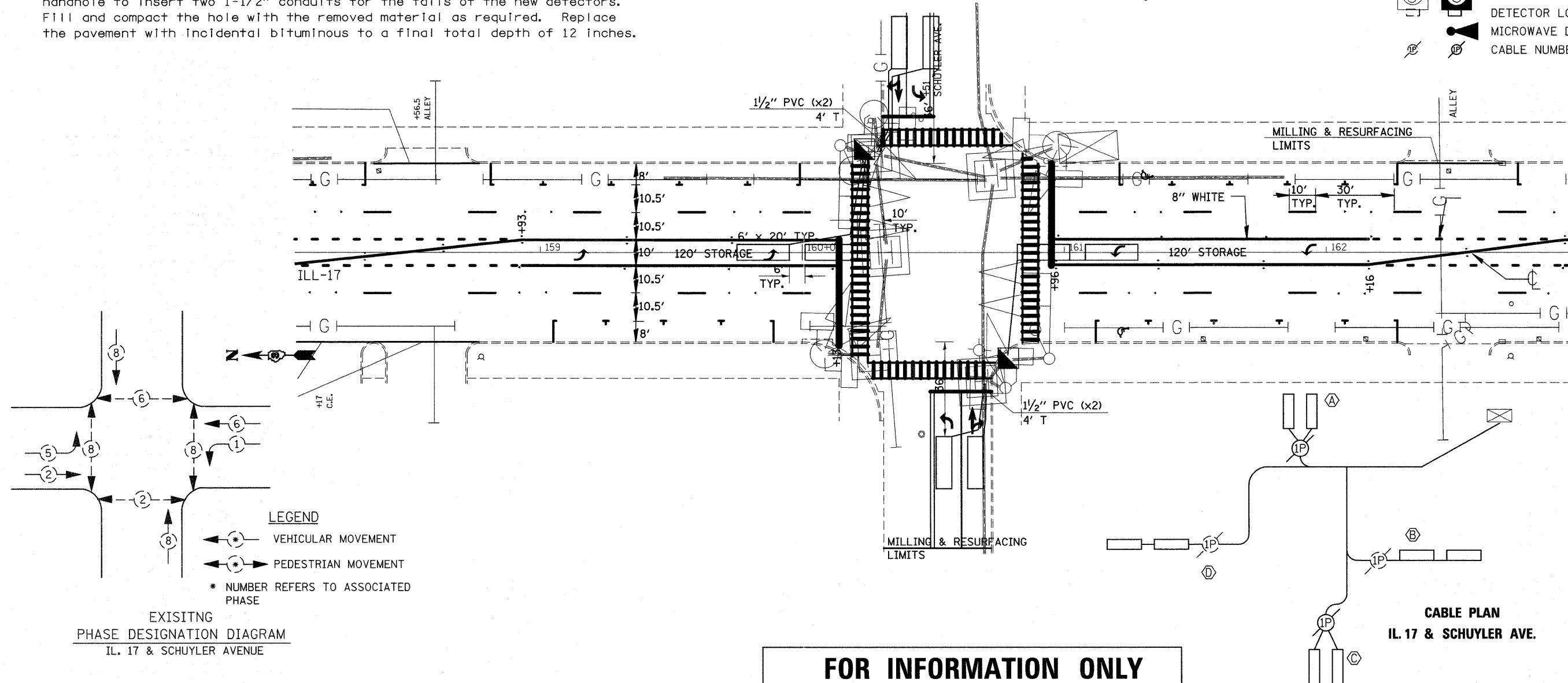
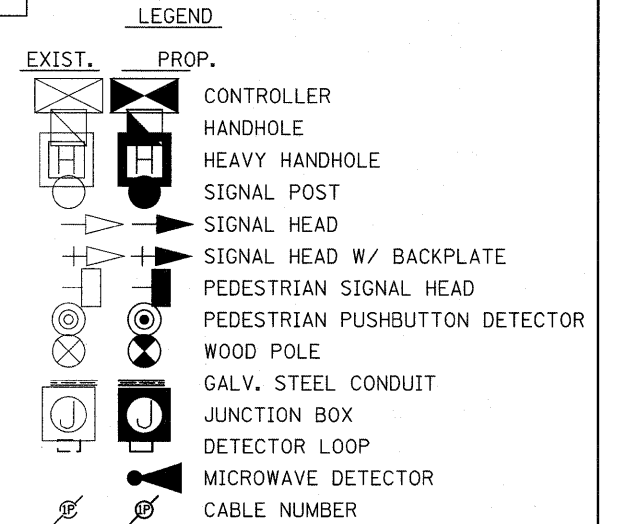
TRAFFIC SIGNAL CONSTRUCTION SUMMARY

1. Detector loops on Illinois 17 are existing and will be removed by the milling operation. Replace the detector loops as shown.
2. Existing detector loop lead-in cable shall be tested prior to splicing onto the new detector loop. Existing detector loop lead-in testing good shall be reused. Testing of the existing lead-in cable shall be included in the price for Detector Loop Type I.
3. The northbound and southbound detector loops are new.
4. Install inductive loop detectors, harnesses, and necessary parts to place the new inductive loop detectors in operation.
5. Southeast quadrant: Remove pavement as necessary. Drill existing handhole to insert two 1-1/2" conduits for the tails of the new detectors. Fill and compact the hole with the removed material as required. Replace the pavement with incidental bituminous to a final total depth of 12 inches.
6. Northwest quadrant: Remove pavement as necessary. Drill existing handhole to insert two 1-1/2" conduits for the tails of the new detectors. Fill and compact the hole with the removed material as required. Replace the pavement with incidental bituminous to a final total depth of 12 inches.

SCHEDULE OF QUANTITIES		
CONDUIT IN TRENCH, 1 1/2" DIA., PVC	FOOT	16
ELECTRIC CABLE IN TRENCH, LEAD-IN, NO. 14 1 PAIR	FOOT	257
DRILL EXISTING HANDHOLE	EACH	4
INDUCTIVE LOOP DETECTOR (SPECIAL)	EACH	2
DETECTOR LOOP, TYPE I	FOOT	710
TRENCH AND BACKFILL FOR ELECTRICAL WORK	FOOT	16
INCIDENTAL BITUMINOUS SURFACING	TON	1.5

DETECTOR LOOP INDUCTANCE CHART IL ROUTE 17 & SCHUYLER AVE				
LOOP SYSTEM	LABEL	NO. OF TURNS	INDUCTANCE (uH)	FREQUENCY Hertz
A	SB	3	355	32397
B	WBLT	3	362	32071
C	NB	3	352	32529
D	EBLT	3	368	31811

MILLING & RESURFACING LIMITS



FOR INFORMATION ONLY

FILE NAME =	USER NAME = leaf_jw	DESIGNED -	REVISED -	STATE OF ILLINOIS DEPARTMENT OF TRANSPORTATION	IL 17 AND SCHUYLER AVENUE DETECTOR LOOP INFORMATION	F.A.P. RTE.	SECTION	COUNTY	TOTAL SHEETS	SHEET NO.
c:\pwork\pwork\quigley\m\2022391\ED00604-shd-details.dgn	DRAWN -	REVISED -	330			(1,1R-2)RS	KANKAKEE	54	38	
PLOT SCALE = 5/8"=1'-0"	CHECKED -	REVISED -	CONTRACT NO. 66477							
PLOT DATE = 12/20/2011	DATE -	REVISED -	ILLINOIS FED. AID PROJECT							