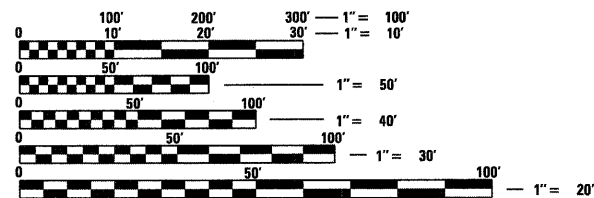


**LIST OF ILLINOIS DOT HIGHWAY STANDARDS**

BLR 22-7	TYPICAL APP OF T.C.D. RURAL LOCAL HIGHWAY (2-LANE 2-WAY RURAL TRAF.) (ROAD CLOSED TO THRU TRAFFIC)
000001-06	STANDARD SYMBOLS, ABBREVIATIONS AND PATTERNS
001001-02	AREAS OF REINFORCEMENT BARS
001006	DECIMAL OF AN INCH AND OF A FOOT
280001-06	TEMPORARY EROSION CONTROL SYSTEMS
442101-07	CLASS B PATCHES
606001-04	CONCRETE CURB TYPE B AND COMBINATION CONCRETE CURB AND GUTTER
630001-10	STEEL PLATE BEAM GUARDRAIL
630101-09	GUARDRAIL MOUNTED ON EXISTING CULVERTS
630201-06	PCC/HMA STABILIZATION AT STEEL PLATE BEAM GUARDRAIL
630301-05	SHOULDER WIDENING FOR TYPE 1 (SPECIAL) GUARDRAIL TERMINALS
631011-08	TRAFFIC BARRIER TERMINAL, TYPE 2
631031-10	TRAFFIC BARRIER TERMINAL, TYPE 6
635001-01	DELINEATORS
635006-03	REFLECTOR AND TERMINAL MARKER PLACEMENT
635011-02	REFLECTOR MARKER AND MOUNTING DETAILS
642001-02	SHOULDER RUMBLE STRIPS, 16 INCH
665001-02	WOVEN WIRE FENCE
701101-02	OFF-ROAD OPERATIONS MULTILANE, 15' (4.5 m) TO 24' (600 mm) FROM PAVEMENT EDGE
701106-02	OFF-ROAD OPERATIONS, MULTILANE, MORE THAN 15' (4.5 m) AWAY
701201-04	LANE CLOSURE, 2L, 2W, DAY ONLY, FOR SPEEDS ≥ 45 MPH
701400-05	APPROACH TO LANE CLOSURE, FREEWAY/EXPRESSWAY
701401-06	LANE CLOSURE, FREEWAY/EXPRESSWAY
701411-08	LANE CLOSURE, MULTILANE, AT ENTRANCE OR EXIT RAMP FOR SPEEDS ≥ 45 MPH
701426-04	LANE CLOSURE, MULTILANE INTERMITTENT OR MOVING OPERATION, FOR SPEEDS ≥ 45 MPH
701456-02	PARTIAL EXIT RAMP CLOSURE FREEWAY/EXPRESSWAY
701901-02	TRAFFIC CONTROL DEVICES
780001-03	TYPICAL PAVEMENT MARKINGS
781001-03	TYPICAL APPLICATIONS RAISED REFLECTIVE PAVEMENT MARKERS

SEE SHEET 2 FOR INDEX OF SHEETS



FULL SIZE PLANS HAVE BEEN PREPARED USING STANDARD ENGINEERING SCALES. REDUCED SIZED PLANS WILL NOT CONFORM TO STANDARD SCALES. IN MAKING MEASUREMENTS ON REDUCED PLANS, THE ABOVE SCALES MAY BE USED.

J.U.L.I.E.  
JOINT UTILITY LOCATION INFORMATION FOR EXCAVATION  
1-800-892-0123  
OR 811

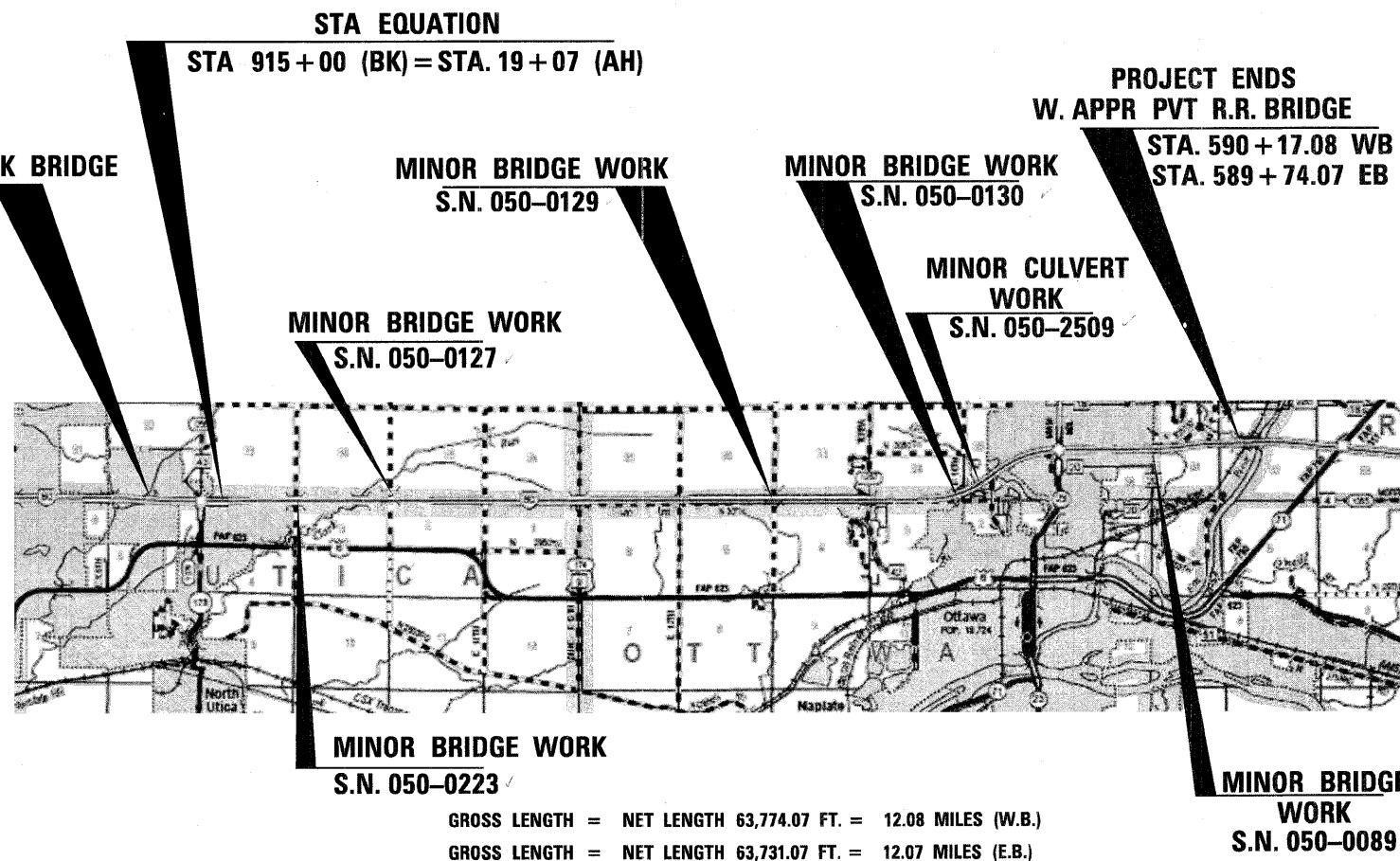
PROJECT ENGINEER: JOE KANNEL, P.E.  
PROJECT MANAGER: PAT BRABOY

CONTRACT NO. 66A48

STATE OF ILLINOIS  
DEPARTMENT OF TRANSPORTATION  
DIVISION OF HIGHWAYS  
**PROPOSED  
HIGHWAY PLANS**

FAI ROUTE 80 (I - 80)  
SECTION (50-2, 4)RS-5 & (50-3)RS-6  
PROJECT: *IM-080-3 (138) 080*  
TYPE of IMPROVEMENT  
**LaSALLE COUNTY**

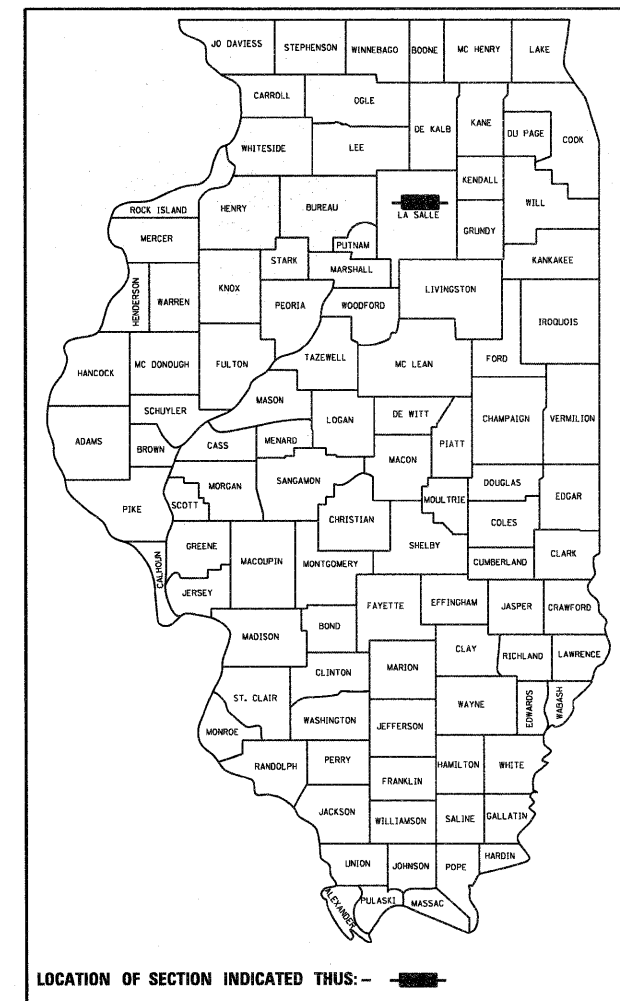
C-93-106-11  
3R RESURFACING ON I-80 FROM PECUMSAUGAN BRIDGE  
TO FOX RIVER BRIDGE NORTH OF OTTAWA



GROSS LENGTH = NET LENGTH 63,774.07 FT. = 12.08 MILES (W.B.)  
GROSS LENGTH = NET LENGTH 63,731.07 FT. = 12.07 MILES (E.B.)

F.A. RTE.	SECTION	COUNTY	TOTAL SHEETS	SHEET NO.
FAI 80(50-2, 4)RS-5 & (50-3)RS-6	(50-2, 4)RS-5 & (50-3)RS-6	LASALLE	109	1
	ILLINOIS	CONTRACT NO. 66A48		

D-93-081-11  
P-93-025-10



LOCATION OF SECTION INDICATED THUS: - [shaded box] -

FUNCTION CLASSIFICATION  
RURAL/URBAN INTERSTATE HIGHWAY  
2010 ADT = 27,150  
P.V. = 62% S.U. = 4% M.U. = 34%

STATE OF ILLINOIS  
DEPARTMENT OF TRANSPORTATION  
DIVISION OF HIGHWAYS

SUBMITTED *January 13, 2012*  
*Eric S. Therkildsen*  
DEPUTY DIRECTOR OF HIGHWAYS, REGION ENGINEER

*February 3, 2012*  
*John D. Buonopelli, P.E.*  
acting ENGINEER OF DESIGN AND ENVIRONMENT

*February 3, 2012*  
*William R. Prew*  
acting DIRECTOR OF HIGHWAYS, CHIEF ENGINEER

**PRINTED BY THE AUTHORITY  
OF THE STATE OF ILLINOIS**