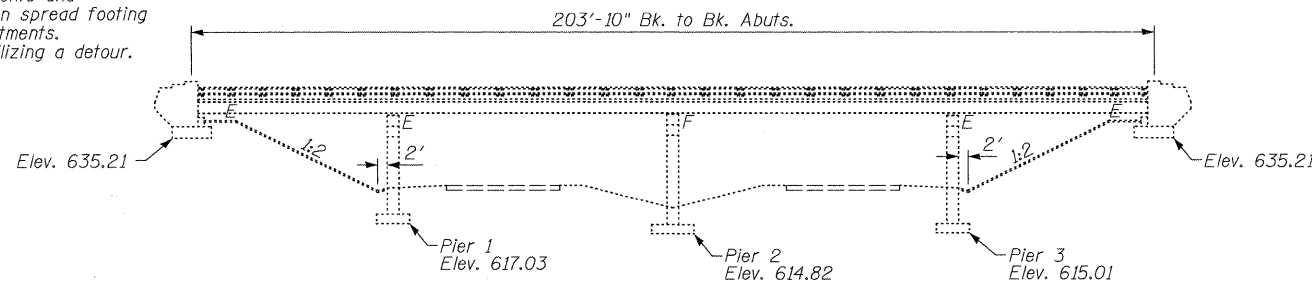


Existing Structure: SN 050-0129, originally built in 1961. The existing structure consists of 4 continuous non-composite steel spans. 203'-10" Bk to Bk of Abutments and 29'-8" out to out of deck, on spread footing piers and pile supported abutments. Traffic will be maintained utilizing a detour.

**PROPOSED WORK**

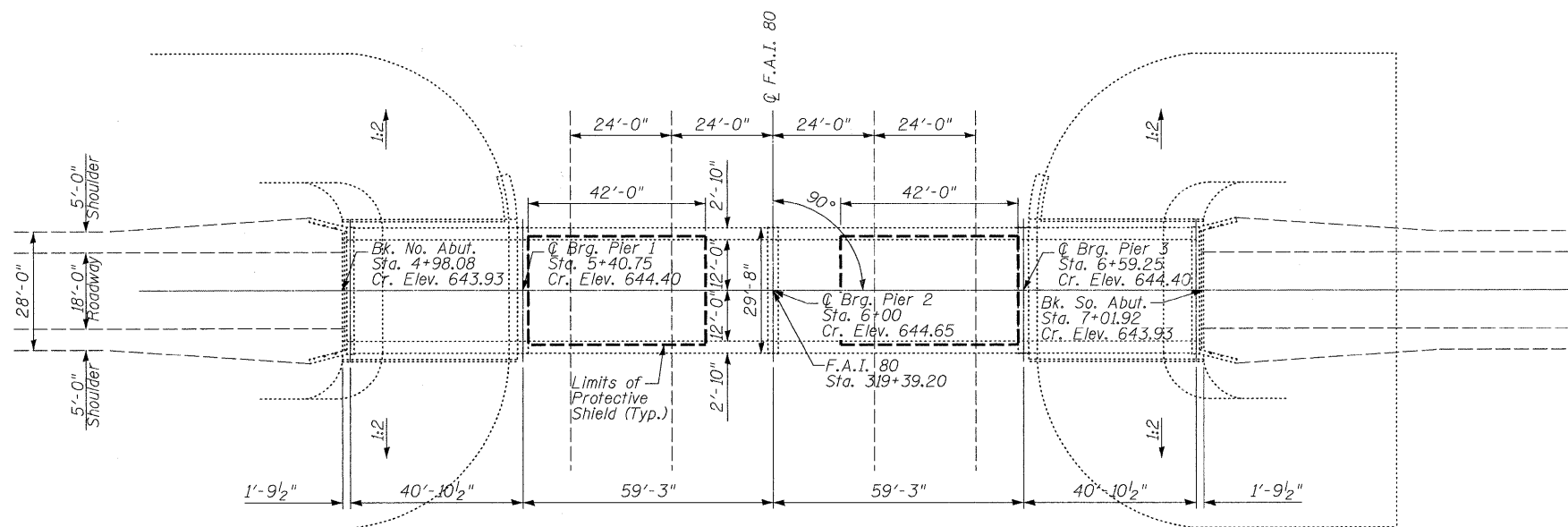
- Structure: S.N. 050-0129  
 1. Structural Repair of Concrete at Piers 1 & 3  
 2. Full and Partial Depth Deck Patching



**ELEVATION**

**GENERAL NOTES**

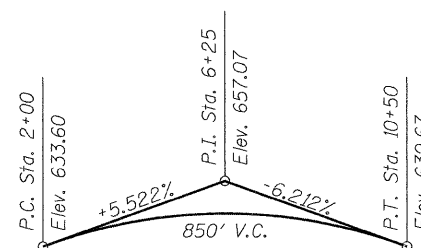
Plan dimensions and details relative to existing plans are subject to nominal construction variations. The Contractor shall field verify existing dimensions and details affecting new construction and make necessary approved adjustments prior to construction or ordering of materials. Such variations shall not be cause for additional compensation for a change in scope of the work, however, the Contractor will be paid for the quantity actually furnished at the unit price bid for the work.



**PLAN**

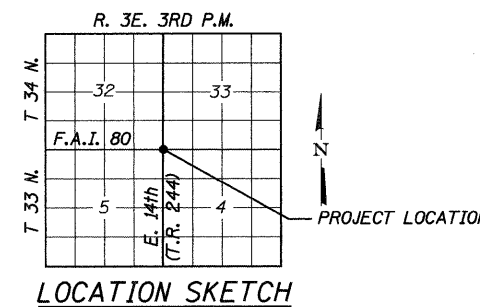
**TOTAL BILL OF MATERIAL**

ITEM	UNIT	SUPER	SUB	TOTAL
Protective Shield	Sq. Yd.	240	--	240
Structural Repair of Concrete (Depth Equal to or Less than 5 Inches)	Sq. Ft.	--	3	3
Deck Slab Repair (Full Depth, Type I)	Sq. Yd.	5.3	--	5.3
Deck Slab Repair (Partial)	Sq. Yd.	36.1	--	36.1

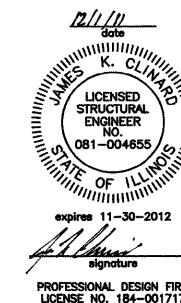


**PROFILE GRADE-E. 14TH**

(Along Transit Line)



**LOCATION SKETCH**



**GENERAL PLAN & ELEVATION**  
**T.R. 244 (E. 14th) OVER F.A.I. RT. 80**  
**SECTION 50-3 HB-2**  
**LASALLE COUNTY**  
**STATION 319+39.20**  
**STRUCTURE NO. 050-0129**

**DESIGN STRESSES (EXISTING CONSTRUCTION)**

Concrete:  $f'_c = 3,500$  psi  
 Reinforcement:  $f_s = 20,000$  psi  
 Structural Steel:  $f_y = 33,000$  psi  
 Design Loading: H15-S12-44  
 Design Specifications: AASHTO 1961

**DESIGN STRESSES (NEW CONSTRUCTION)**

Concrete:  $f'_c = 3,500$  psi  
 Reinforcement:  $f_y = 60,000$  psi  
 Design Loading: H15-S12-44  
 Design Specifications: AASHTO 2002 & Interims

**STATE OF ILLINOIS**  
**DEPARTMENT OF TRANSPORTATION**

F.A.I. RTE.	SECTION	COUNTY	TOTAL SHEETS	SHEET NO.
80	(50-2,4)RS-5 & (50-3)RS-6	LASALLE	109	66
			CONTRACT NO. 66A48	