

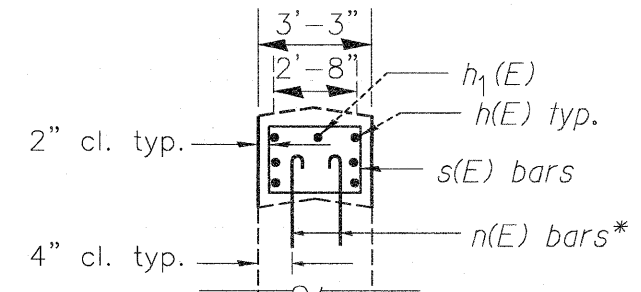
Notes:

All exposed edges shall have a 3/4" chamfer

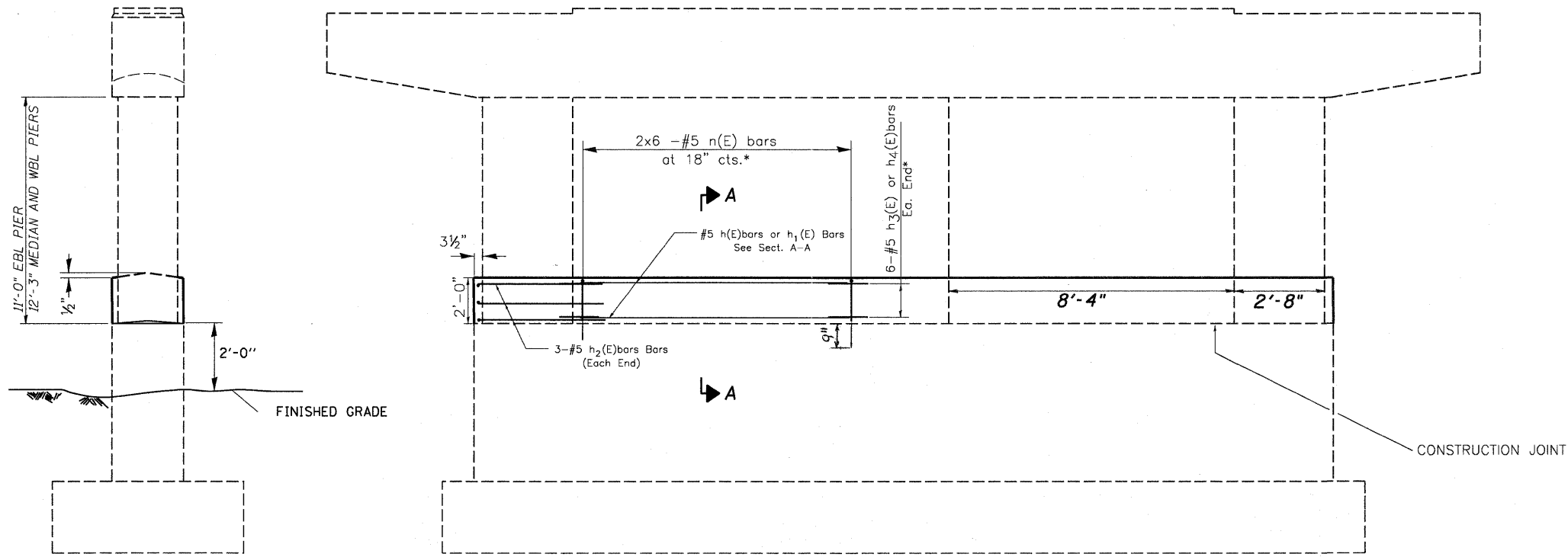
Reinforcement bars designated (E) shall be epoxy coated.

Plan dimensions and details relative to existing plans are subject to nominal construction variations. The Contractor shall field verify existing dimensions and details affecting new construction and make necessary approved adjustments prior to construction or ordering of materials. Such variations shall not be cause for additional compensation for a change in scope of the work, however, the Contractor will be paid for the quantity actually furnished based at the unit price bid for the work

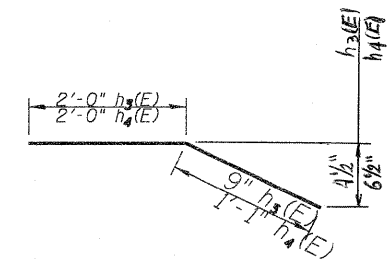
*Drill & Epoxy Grout bars in 9" min. drilled holes according to Section 584 of Std. Spec. Cost included with Reinforcement Bars, Epoxy Coated



SECTION A-A



ELEVATION

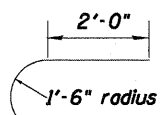


h₃(E) & h₄(E) bars*

BILL OF MATERIAL

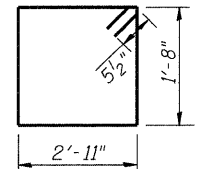
Bar	No.	Size	Length	Shape
n(E)	18	#5	22'-0"	—
h ₁ (E)	6	#5	8'-0"	—
h ₂ (E)	18	#5	8'-9"	U
h ₃ (E)	36	#5	2'-9"	—
h ₄ (E)	36	#5	3'-1"	—
s(E)	54	#5	10'-1"	□
n(E)	72	#5	2'-11"	—
Concrete Structures			Cu. Yd.	16.4
Reinforcement Bars, Epoxy Coated			Pound	1,633

QUANTITIES ARE FOR ALL THREE PIERS

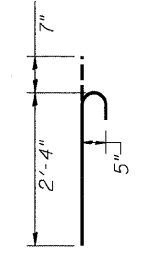


h₂(E) Bar

END VIEW



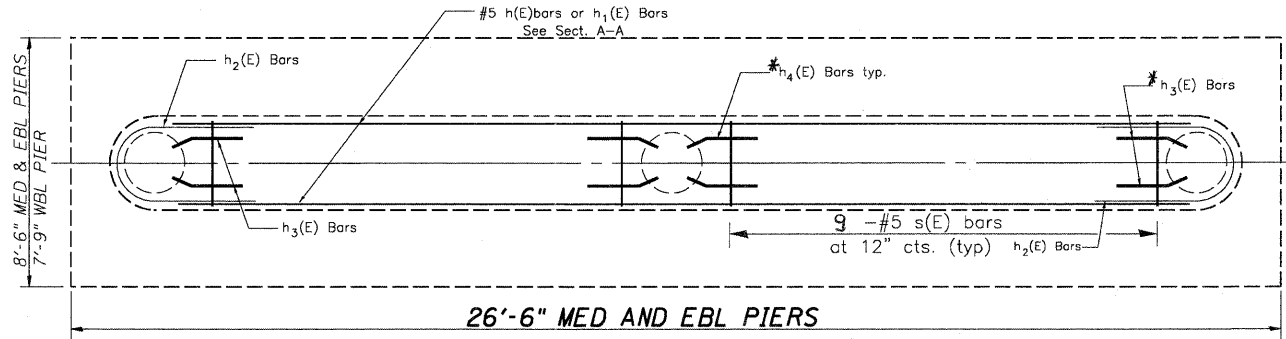
BAR s(E)



BAR n(E)*



D. Carl Puzey 1/25/12
Expires 1/30/12



SECTION B-B

WBL, EBL, AND MEDIAN PIERS

DAYTON RD. OVER FAI 80
SEC. (50-2, 4)RS-5 & (50-3)RS-6
LASALLE COUNTY
S.N. 050-0089