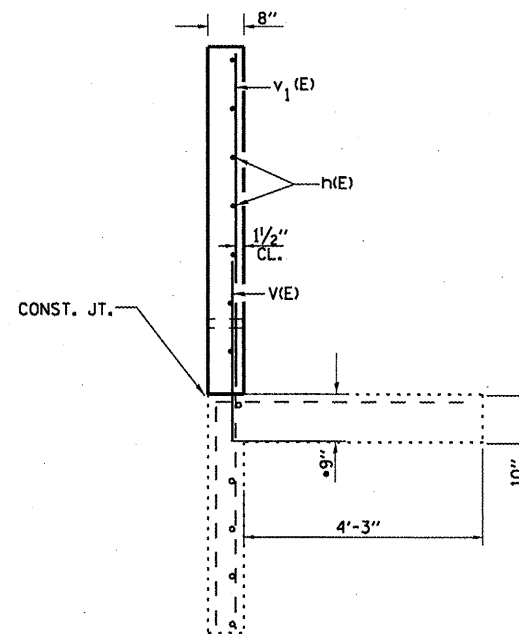


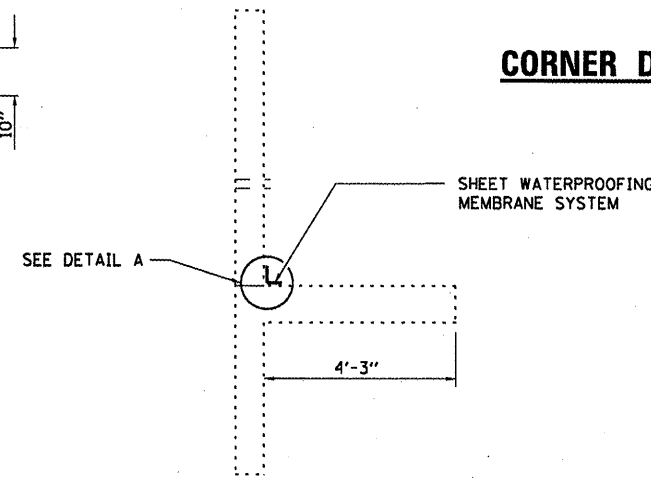
**WING ELEVATION**

\*ORDER v<sub>1</sub>(E) BARS IN FULL LENGTH AND CUT IN FIELD TO FIT.



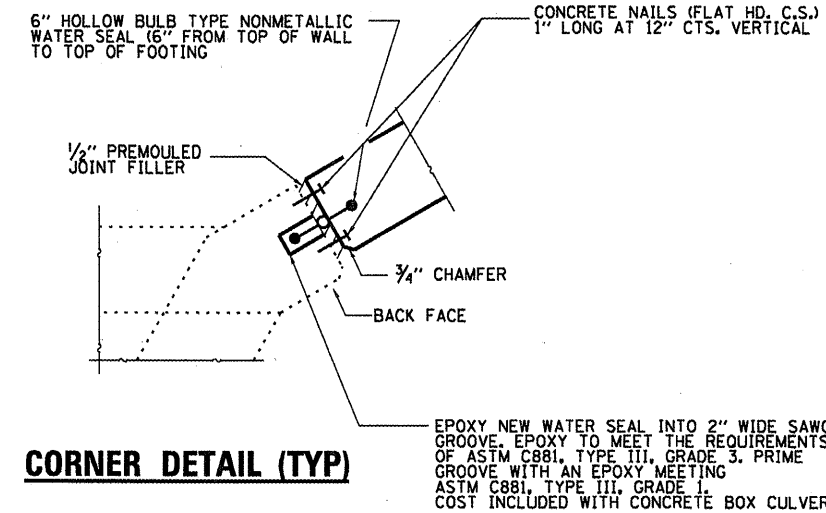
**SECTION A-A**

\*\* DRILL & GROUT v(E) BARS INTO EXISTING CONCRETE FOOTING ACCORDING TO SECTION 584 OF THE STANDARD SPEC.



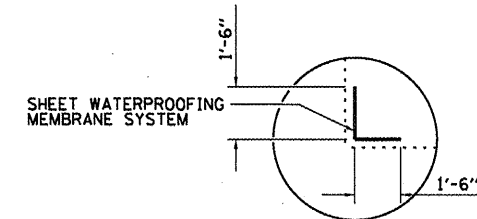
**SECTION A-A**

SHEET WATERPROOFING MEMBRANE SYSTEM

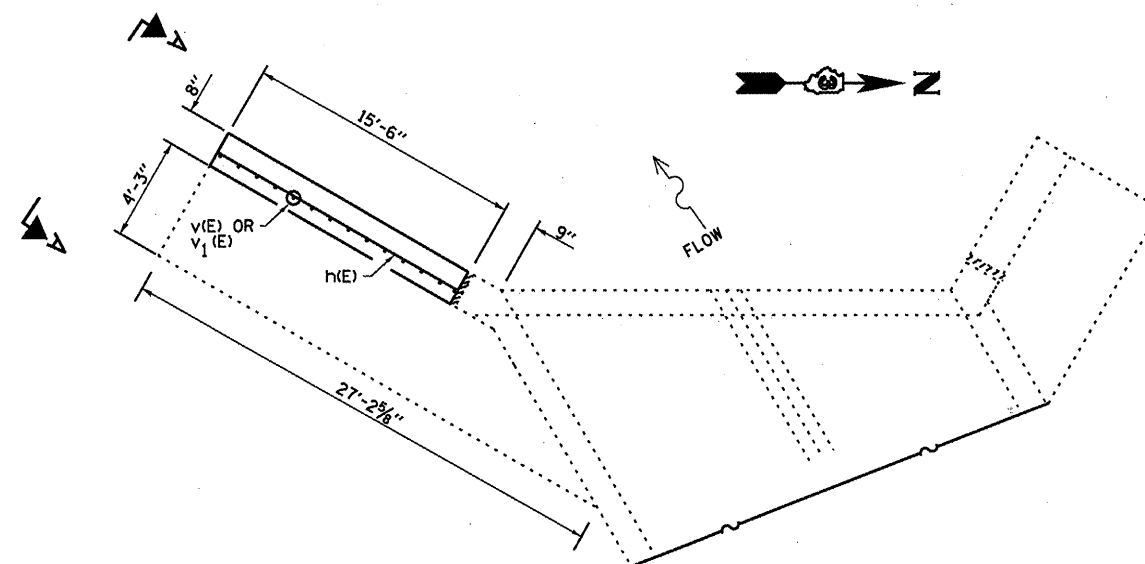


**CORNER DETAIL (TYP)**

EPOXY NEW WATER SEAL INTO 2" WIDE SAWCUT GROOVE. EPOXY TO MEET THE REQUIREMENTS OF ASTM C881, TYPE III, GRADE 3. PRIME GROOVE WITH AN EPOXY MEETING ASTM C881, TYPE III, GRADE 1. COST INCLUDED WITH CONCRETE BOX CULVERTS.



**DETAIL A**



**PARTIAL PLAN**

**BILL OF MATERIAL**

Bar	No.	Size	Length	Shape
h(E)	6	#5	15'-3"	—
v(E)	16	#6	3'-0"	—
v <sub>1</sub> (E)	16	#4	6'-6"	—
Concrete Box Culverts			Cu. Yd.	2.0
Reinforcement Bars			Pound	237
Sheet Waterproofing Membrane System			Sq. Yd.	6.0

FILE NAME =	USER NAME = petelyj	DESIGNED - YOGESH PATEL	REVISED -
c:\pw\work\pwid\petelyj\d0266589\036642-sheets.dgn		DRAWN - YOGESH PATEL	REVISED -
	PLOT SCALE = 100.0000 ' / 1"	CHECKED - RON WOODSHANK	REVISED -
	PLOT DATE = 12/27/2011	DATE -	REVISED -

STATE OF ILLINOIS  
DEPARTMENT OF TRANSPORTATION

**RECONSTRUCTION DETAILS  
FOR LOCATION 3: 053-2014**

SCALE: SHEET NO. 5 OF 6 SHEETS STA. TO STA.

F.A.P. RTE. VAR.	SECTION VARIOUS	COUNTY VARIOUS	TOTAL SHEETS 40	SHEET NO. 21
			CONTRACT NO. 66B42	
ILLINOIS FED. AID PROJECT				