

F.A.P. RTE.	SECTION	COUNTY	TOTAL SHEETS	SHEET NO.
591	D3 INTERMITTENT RS 2012-1	DEKALB	12	1
		ILLINOIS	CONTRACT NO. 66B45	

INDEX OF SHEETS

1. COVER SHEET
2. GENERAL NOTES
- 3-4. SUMMARY OF QUANTITIES
5. TYPICAL SECTIONS
6. SCHEDULES
7. INTERSECTION DETAILS
8. PAVEMENT MARKING
9. TYPICAL PAVEMENT MARKING
10. DETECTOR LOOPS
11. MISCELLANEOUS DETAILS

STANDARDS

000001-06	STANDARD SYMBOLS, ABBREVIATIONS AND PATTERNS
001006	DECIMAL OF AN INCH AND OF A FOOT
406201-01	MAILBOX TURNOUT
442201-03	CLASS C AND D PATCHES
482011-03	HMA SHOULDER STRIPS/SHOULDERS WITH RS OR WIDENING & RS PROJECTS
701001-02	OFF-ROAD OPERATIONS 2L, 2W, MORE THAN 15' (4.5 m) AWAY
701006-03	OFF-ROAD OPERATIONS 2L, 2W, 15' (4.5 m) TO 24" (600 mm) FROM PAVEMENT EDGE
701101-02	OFF-ROAD OPERATIONS MULTILANE, 15' (4.5 m) TO 24" (600 mm) FROM PAVEMENT EDGE
701106-02	OFF-ROAD OPERATIONS, MULTILANE, MORE THAN 15' (4.5 m) AWAY
701201-04	LANE CLOSURE, 2L, 2W, DAY ONLY, FOR SPEEDS ≥ 45 MPH
701301-04	LANE CLOSURE, 2L, 2W, SHORT TIME OPERATIONS
701311-03	LANE CLOSURE, 2L, 2W, MOVING OPERATIONS - DAY ONLY
701426-04	LANE CLOSURE, MULTILANE INTERMITTENT OR MOVING OPERATION, FOR SPEEDS ≥ 45 MPH
701901 - 02	TRAFFIC CONTROL DEVICES
780001 - 03	TYPICAL PAVEMENT MARKINGS
781001-03	TYPICAL APPLICATIONS RAISED REFLECTIVE PAVEMENT MARKERS
857001-01	STANDARD PHASE DESIGNATION DIAGRAMS AND PHASE SEQUENCES
886001-01	DETECTOR LOOP INSTALLATIONS
886006-01	TYPICAL LAYOUT FOR DETECTION LOOPS

STATE OF ILLINOIS
DEPARTMENT OF TRANSPORTATION
DIVISION OF HIGHWAYS

PROPOSED
HIGHWAY PLANS

FAP ROUTE 591 (US 34)
SECTION D3 INTERMITTENT RS 2012-1

INTERSECTION MILLING AND RESURFACING
DEKALB COUNTY

C-93-126-11

D-93-002-11



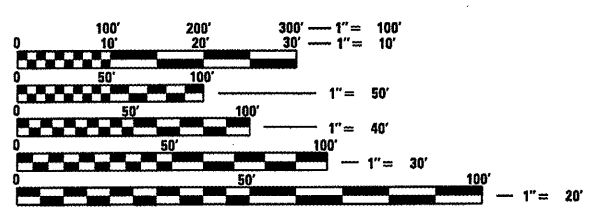
LOCATION OF SECTION INDICATED THUS: - ■ -

OTHER PRINCIPAL ARTERIAL
FAP RTE. 591 (US 34)
2009

ADT	7400
P.V.	95.27%
S.U.	2.70%
M.U.	2.03%

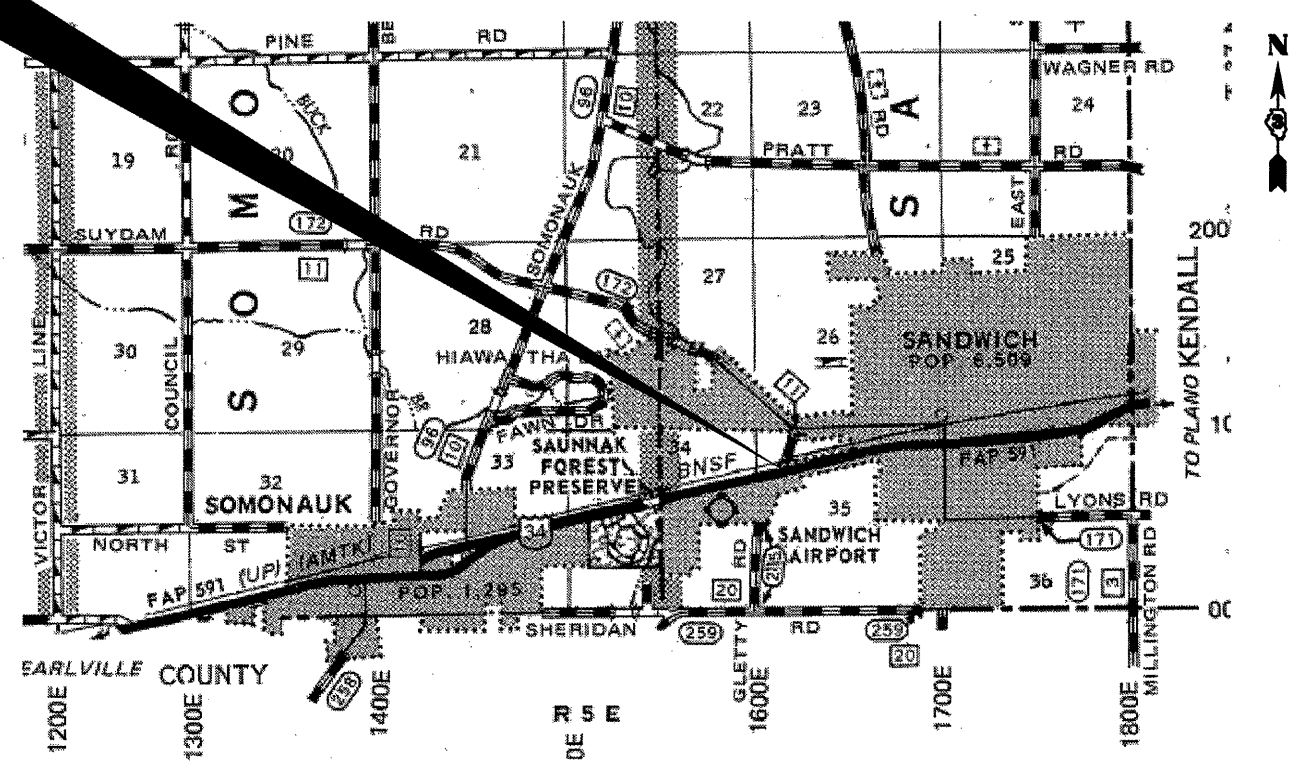
PROJECT LOCATION

INTERSECTION
OF FAP ROUTE 591 (US 34)
AND GLETTY ROAD
6.13 MI. NE OF IL ROUTE 23
(NEAR SANDWICH)
STA. 351 + 58 TO STA. 367 + 18



FULL SIZE PLANS HAVE BEEN PREPARED USING STANDARD ENGINEERING SCALES. REDUCED SIZED PLANS WILL NOT CONFORM TO STANDARD SCALES. IN MAKING MEASUREMENTS ON REDUCED PLANS, THE ABOVE SCALES MAY BE USED.

J.U.L.I.E.
 JOINT UTILITY LOCATION INFORMATION FOR EXCAVATION
 1-800-892-0123
 OR 811



PROJECT ENGINEER: JOE KANNEL, P.E.
UNIT CHIEF: RON WOODSHANK
TOWNSHIP: SANDWICH
CONTRACT NO. 66B45

GROSS LENGTH = 1560.00 FT. = 0.295 MILE
 NET LENGTH = 1560.00 FT. = 0.295 MILE

STATE OF ILLINOIS
 DEPARTMENT OF TRANSPORTATION
 DIVISION OF HIGHWAYS

SUBMITTED 12/28 20 11
Eric S. Thekilderson
 DEPUTY DIRECTOR OF HIGHWAYS, REGION ENGINEER

Feb 3 20 12
John D. Baranzelli, P.E.
 acting ENGINEER OF DESIGN AND ENVIRONMENT

Feb 3 20 12
William R. Fiesler
 acting DIRECTOR OF HIGHWAYS, CHIEF ENGINEER

PRINTED BY THE AUTHORITY
OF THE STATE OF ILLINOIS