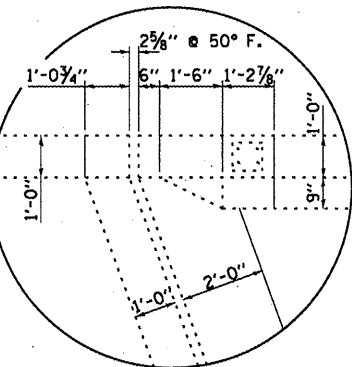
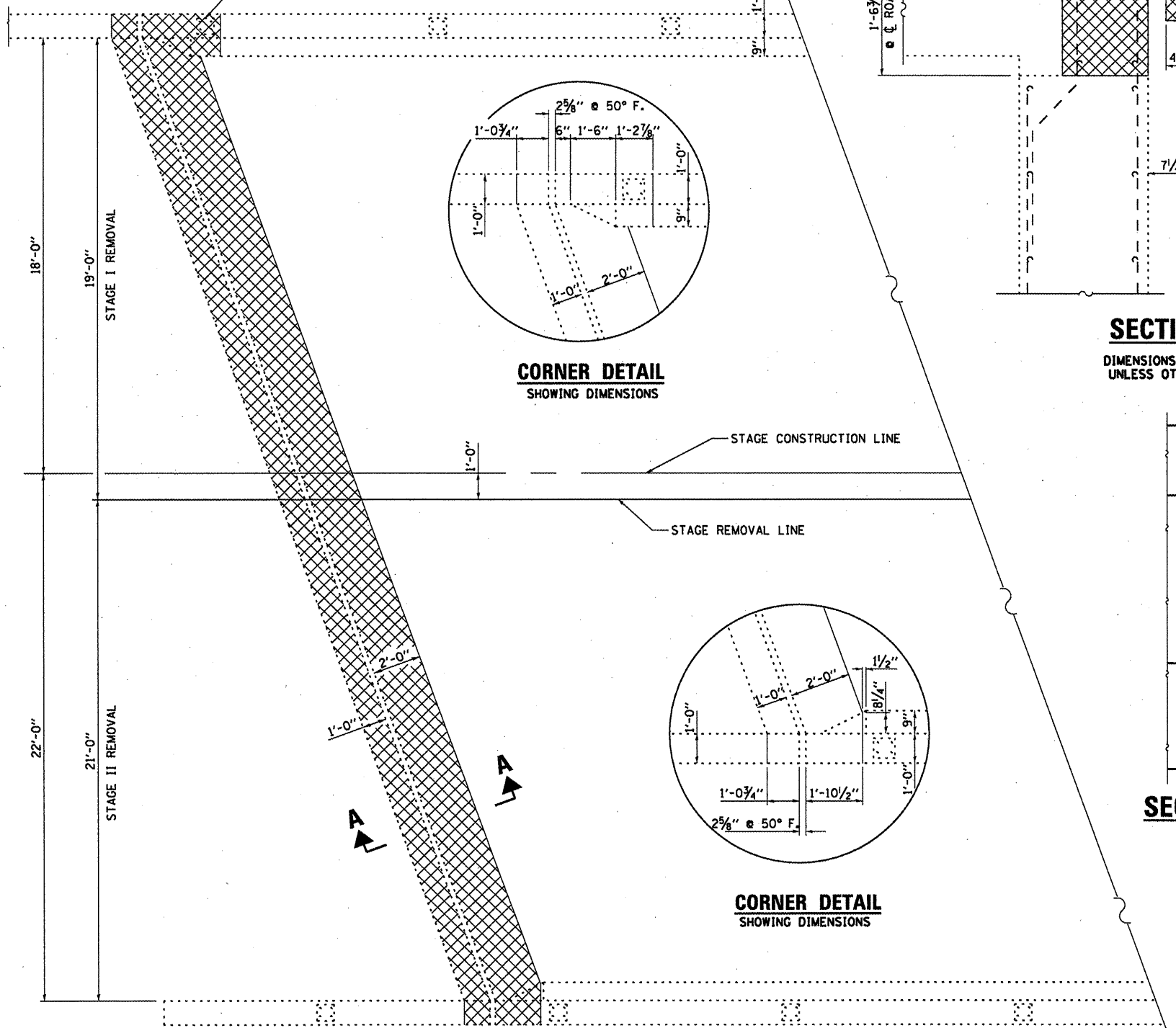
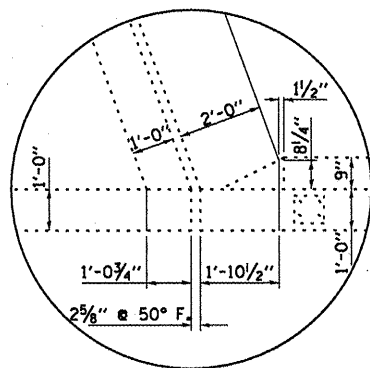




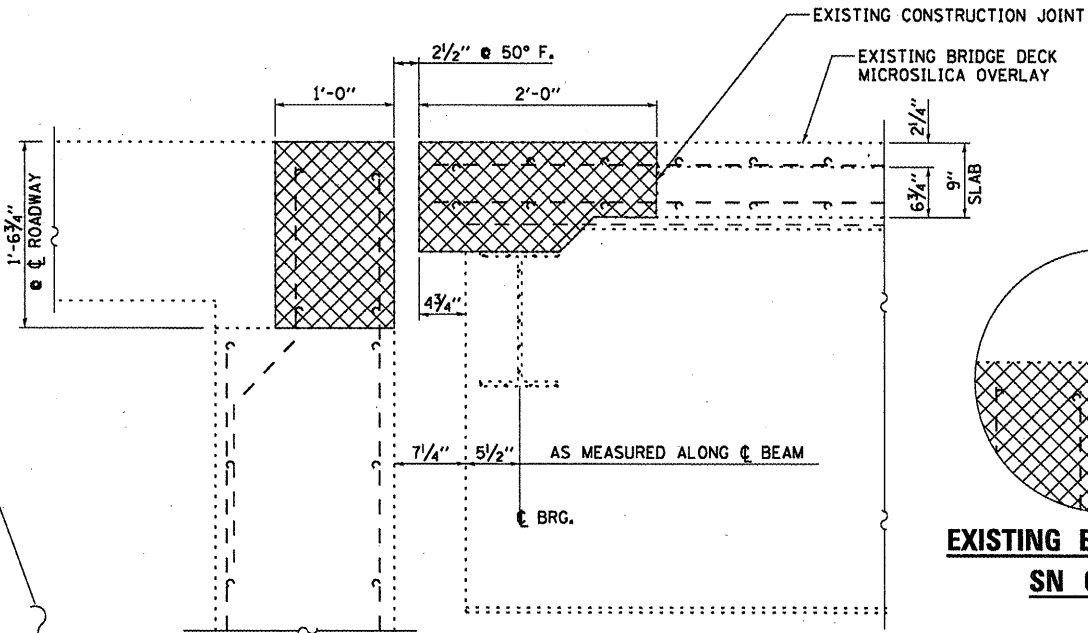
REMOVE AND RE-INSTALL  
EXISTING RAIL POST



**CORNER DETAIL**  
SHOWING DIMENSIONS

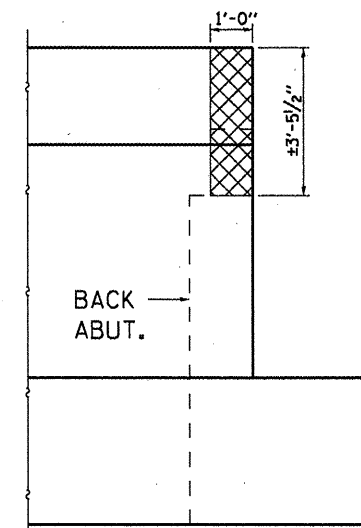


**CORNER DETAIL**  
SHOWING DIMENSIONS



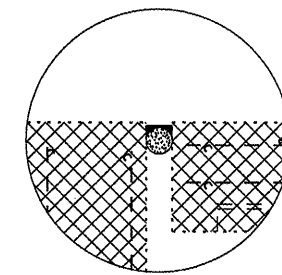
**SECTION A-A**

DIMENSIONS AT RT. ANGLES  
UNLESS OTHERWISE NOTED

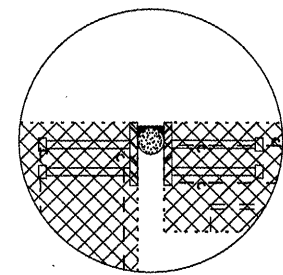


**SECTION AT WING WALL**

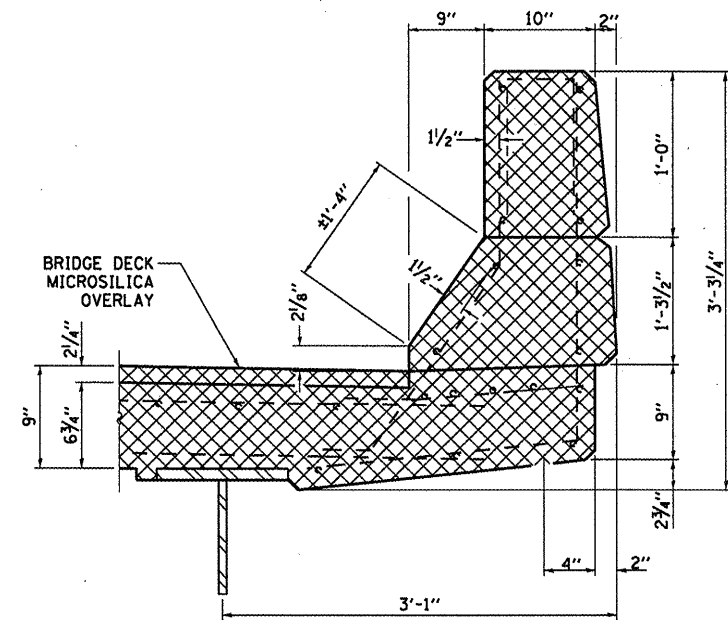
OUTSIDE FACE



**EXISTING EXPANSION JT.**  
**SN 053-0128**



**EXISTING EXPANSION JT.**  
**SN 053-0129**



**SECTION AT CURB**

AT EXPANSION JOINT

**NOTES**

CROSSED HATCHED AREA REPRESENTS CONCRETE REMOVAL LIMITS.

EXISTING REINFORCEMENT BARS EXTENDING INTO CONCRETE REMOVAL AREA SHALL BE STRAIGHTENED, CLEANED AND INCORPORATED IN THE NEW CONCRETE.

EXISTING TRANSVERSE REINFORCEMENT BARS SHALL BE REMOVED AND REPLACED WITH EPOXY COATED REINFORCEMENT BARS.

REMOVAL OF EXISTING EXPANSION JOINT MATERIALS SHALL BE INCLUDED IN THE COST OF "CONCRETE REMOVAL".

**PARTIAL PLAN**

SOUTH END SHOWN  
NORTH END SIMILAR THRU 180° ROTATION

FILE NAME =  
c:\pwwork\pmdot\petelyj\d8268336\0366

USER NAME = petelyj  
48-sht-details.dgn  
PLOT SCALE = 100.0000' / in.  
PLOT DATE = 12/22/2011

DESIGNED - RON WOODSHANK  
DRAWN - RON WOODSHANK  
CHECKED - *ADY*  
DATE -

REVISED -  
REVISED -  
REVISED -  
REVISED -

STATE OF ILLINOIS  
DEPARTMENT OF TRANSPORTATION

**EXPANSION JOINT DETAILS - REMOVAL**  
**FOR SN 053-0128 & SN 053-0129**

SCALE: SHEET NO. 2 OF 8 SHEETS STA. TO STA.

F.A.I. RTE.	SECTION	COUNTY	TOTAL SHEETS	SHEET NO.
55	(53-58-1)1-2	LIVINGSTON	16	10
CONTRACT NO. 66B48			ILLINOIS FED. AID PROJECT	