

F.A.I. RTE.	SECTION	COUNTY	TOTAL SHEETS	SHEET NO.
80	(32-2)I-5	GRUNDY	9	1
		ILLINOIS	CONTRACT NO. 66B88	

STATE OF ILLINOIS
DEPARTMENT OF TRANSPORTATION
DIVISION OF HIGHWAYS
**PROPOSED
HIGHWAY PLANS**

**FAI ROUTE 80 (I-80)
SECTION (32-2)I-5**

**CONCRETE PATCHING
GRUNDY COUNTY**

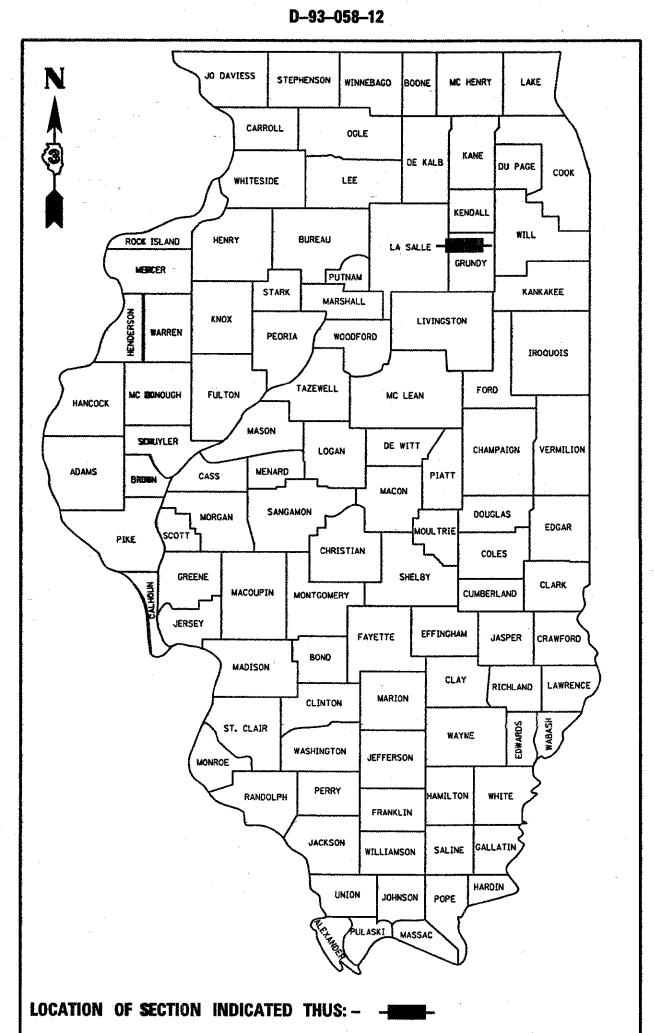
INDEX OF SHEETS

- 1 COVER SHEET
- 2 GENERAL NOTES
- 3 SUMMARY OF QUANTITIES
- 4 TYPICAL SECTION
- 5 SCHEDULE
- 6 SCHEMATIC
- 7-9 DETAILS

STANDARDS

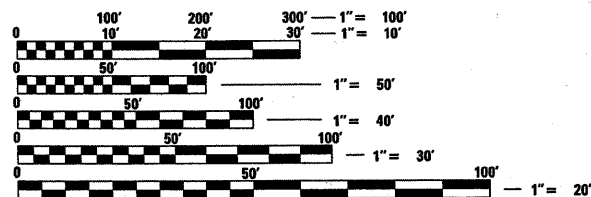
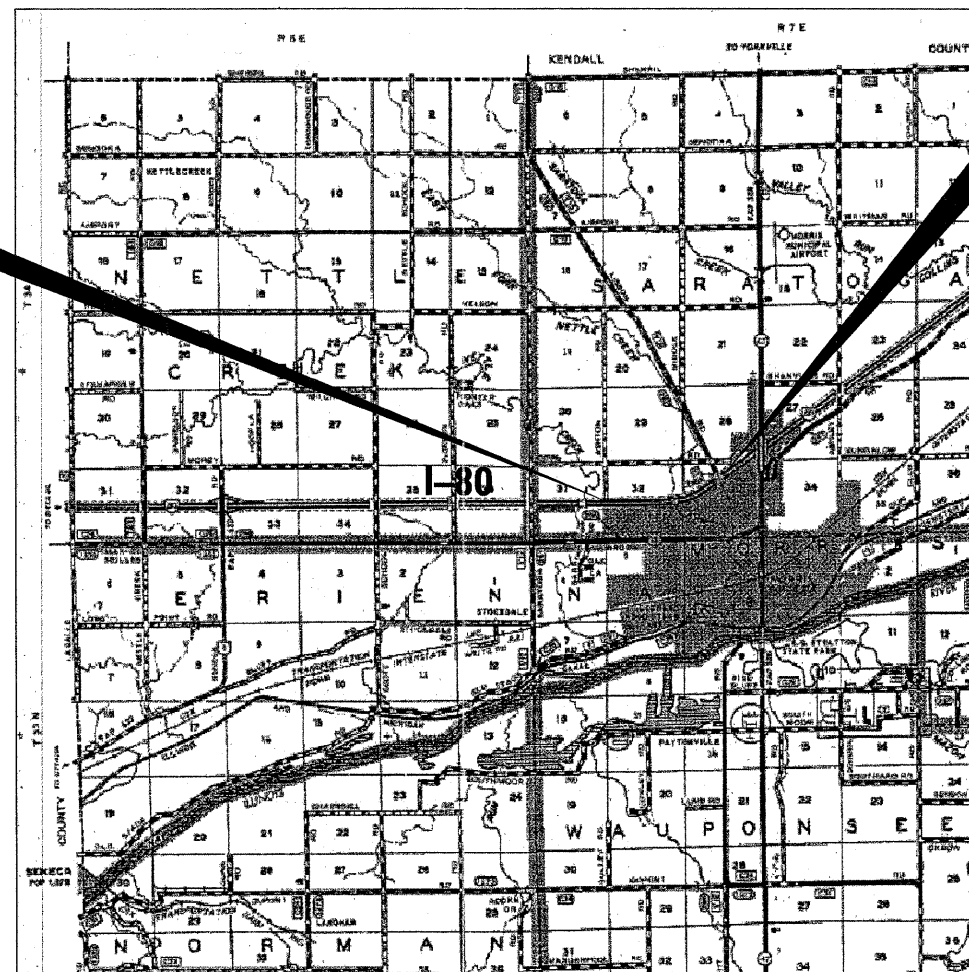
- 000001-00 STANDARD SYMBOLS, ABBREVIATIONS AND PATTERNS
- 001001-02 AREAS OF REINFORCEMENT BARS
- 001006 DECIMAL OF AN INCH AND OF A FOOT
- 442001-04 CLASS A PATCHES
- 701101-02 OFF-ROAD OPERATIONS MULTILANE, 15' (4.5 m) TO 24" (600 mm) FROM PAVEMENT EDGE
- 701400-05 APPROACH TO LANE CLOSURE, FREEWAY/EXPRESSWAY
- 701401-06 LANE CLOSURE, FREEWAY/EXPRESSWAY
- 701426-04 LANE CLOSURE, MULTILANE INTERMITTENT OR MOVING OPERATION, FOR SPEEDS ≥ 45 MPH
- 701901-02 TRAFFIC CONTROL DEVICES

C-93-058-12



**BEGIN PROJECT
2 MILES WEST OF IL 47**

**END PROJECT
0.5 MILE WEST
OF IL 47**



FULL SIZE PLANS HAVE BEEN PREPARED USING STANDARD ENGINEERING SCALES. REDUCED SIZED PLANS WILL NOT CONFORM TO STANDARD SCALES. IN MAKING MEASUREMENTS ON REDUCED PLANS, THE ABOVE SCALES MAY BE USED.

J.U.L.I.E.
JOINT UTILITY LOCATION INFORMATION FOR EXCAVATION
1-800-892-0123
OR 811

DISTRICT 3 NO. (815) 434-6131
PROJECT ENGINEER: CRAIG REED, P.E.
UNIT CHIEF: RUTH SCHWANKE
TOWNSHIP(S): SARATOGA
CONTRACT NO. 66B88

GROSS LENGTH = 7920 FT. = 1.5 MILE
NET LENGTH = 2851.2 FT. = .54 MILE

**FUNCTIONAL CLASSIFICATION
INTERSTATE**

2011 ADT = 28,100
P.V. = 66.8% S.U. = 4.4% M.U. = 28.8%

STATE OF ILLINOIS
DEPARTMENT OF TRANSPORTATION
DIVISION OF HIGHWAYS

SUBMITTED Dec 27 20 11
Eric S. Marksdorfer
DEPUTY DIRECTOR OF HIGHWAYS, REGION ENGINEER

February 3 20 12
John D. Baranzelli P.E.
acting ENGINEER OF DESIGN AND ENVIRONMENT

February 3 20 12
William R. Freyler
acting DIRECTOR OF HIGHWAYS, CHIEF ENGINEER

**PRINTED BY THE AUTHORITY
OF THE STATE OF ILLINOIS**