

F.A.P. RTE.	SECTION	COUNTY	TOTAL SHEETS	SHEET NO.
399	36 R-7	TAZEWELL	390	1
		ILLINOIS	CONTRACT NO. 68370	

STATE OF ILLINOIS
DEPARTMENT OF TRANSPORTATION
DIVISION OF HIGHWAYS

**PROPOSED
HIGHWAY PLANS**

ROUTE: FAP 399 (IL. RTE. 8)
SECTION 36 R-7
PROJECT ACF-0399(012)
RECONSTRUCTION
TAZEWELL COUNTY
C-94-003-04

D-94-003-04



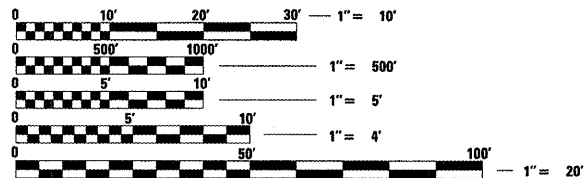
FOR INDEX OF SHEETS, SEE SHEET NO. 2

DESIGN DESIGNATION

ILLINOIS ROUTE 8
1327 (10) ARTERIAL -6.03 (PCC-20)
ADT = 18,600 (2029)
PV = 94.0%
SU = 4.5%
MU = 1.5%

N.P.D.E.S. PERMIT REQUIRED

QC/QA CONCRETE
QC/QA BITUMINOUS

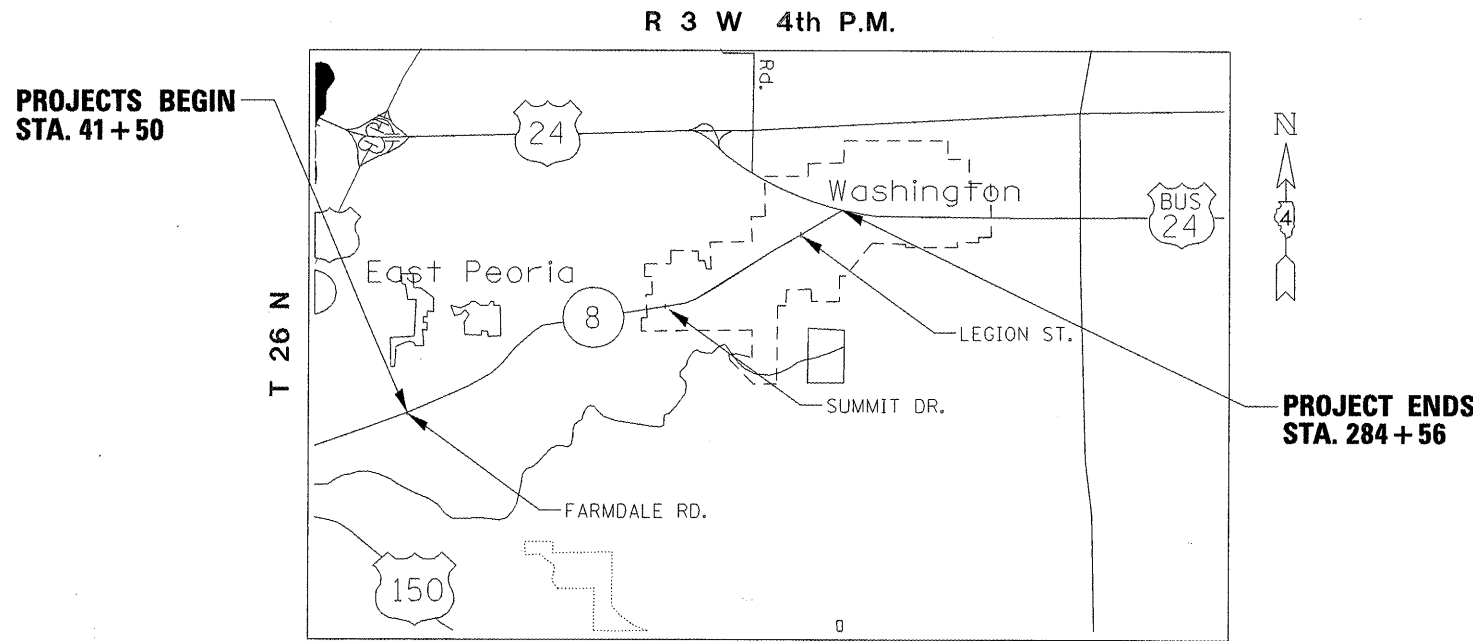


FULL SIZE PLANS HAVE BEEN PREPARED USING STANDARD ENGINEERING SCALES. REDUCED SIZED PLANS WILL NOT CONFORM TO STANDARD SCALES. IN MAKING MEASUREMENTS ON REDUCED PLANS, THE ABOVE SCALES MAY BE USED.

J.U.L.I.E.
JOINT UTILITY LOCATION INFORMATION FOR EXCAVATION
1-800-892-0123
OR 811

PROJECT ENGINEER: MIKE LEWIS 309-671-3454
LIAISON ENGINEER: ELIAS ELDERZI 309-671-3459

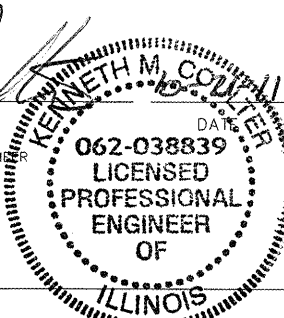
CONTRACT NO. 68370



GROSS LENGTH = 24,306 FT. = 4.603 MILE
NET LENGTH = 6,948 FT. = 1.316 MILE

KENNETH M. COULTER
ILLINOIS REGISTERED PROFESSIONAL ENGINEER
No. 062-038839
EXPIRATION DATE 11/30/11

AECOM



PROJECT DESCRIPTION:
RECONSTRUCTION OF THE EXISTING ROADWAY INTO 5 LANE SECTION. PROJECT INCLUDES EARTHWORK, STORM SEWER, PCC PAVEMENT, UTILITY RELOCATION, DEMOLITION, TEMPORARY SIGNALS, PAVEMENT MARKING, EROSION CONTROL AND ALL COLLATERAL WORK.

STATE OF ILLINOIS
DEPARTMENT OF TRANSPORTATION
DIVISION OF HIGHWAYS
SUBMITTED 10-21 20 11
Joseph E. Coulter
DEPUTY DIRECTOR OF HIGHWAYS, REGION ENGINEER
December 9 20 11
Scott E. Stitt, P.E.
acting ENGINEER OF DESIGN AND ENVIRONMENT
December 9 20 11
William R. Fuxler
interim DIRECTOR OF HIGHWAYS, CHIEF ENGINEER

PRINTED BY THE AUTHORITY
OF THE STATE OF ILLINOIS