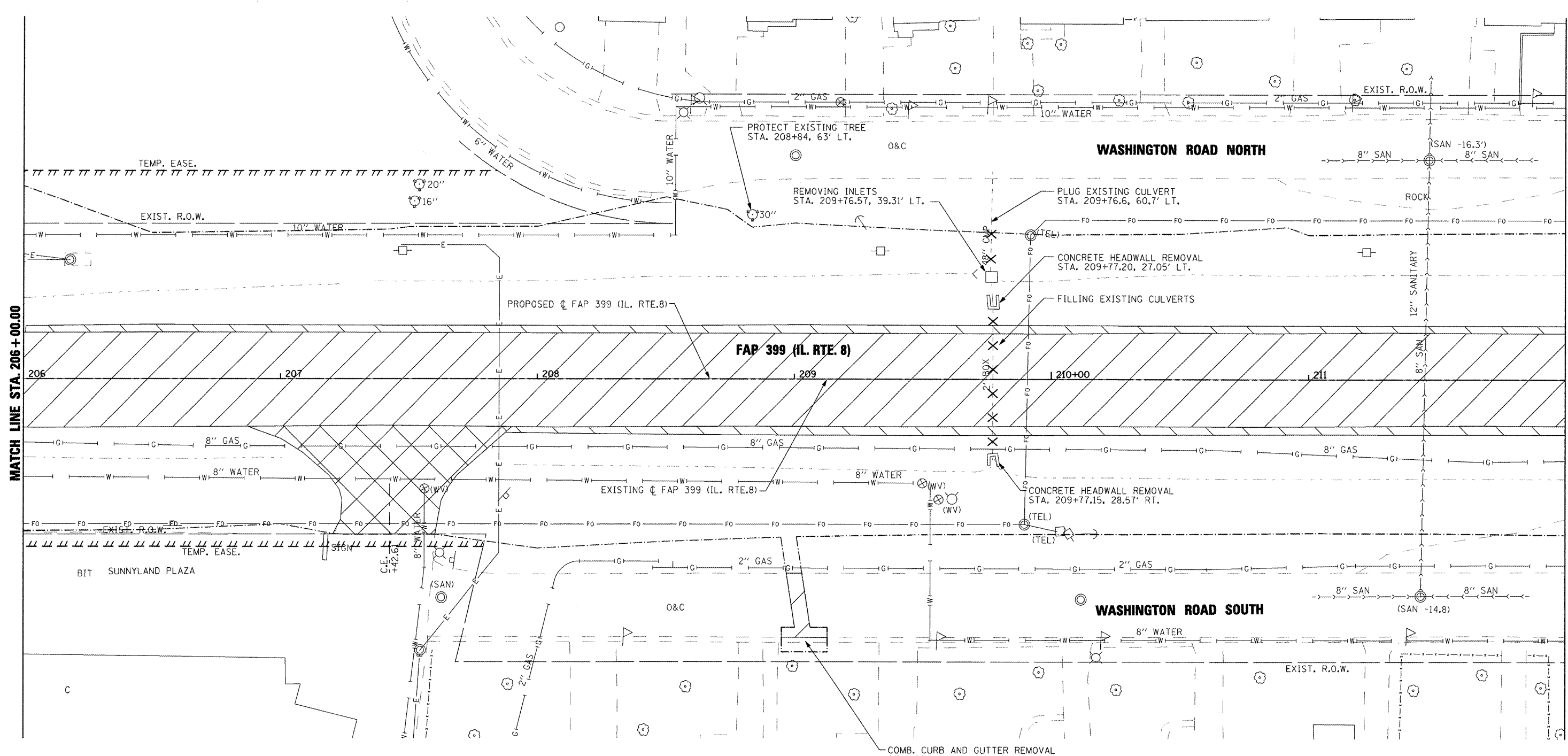
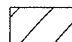



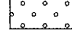




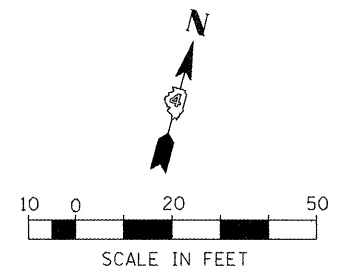
MATCH LINE STA. 206+00.00

MATCH LINE STA. 212+00.00



**LEGEND**

-  PAVEMENT REMOVAL
-  BITUMINOUS CONC. SHOULDER REMOVAL
-  DRIVEWAY PAVEMENT REMOVAL
-  HMA SURFACE REMOVAL - BUTT JOINT
-  REMOVAL AND DISPOSAL OF UNSUITABLE MATERIAL
-  PIPE CULVERT REMOVAL
-  TREE REMOVAL



FILE NAME =	USER NAME = IDOT	DESIGNED -	REVISED -
x:\projects\200803566\dgn\04-Rte8-shr-RE	M-2.dgn	DRAWN -	REVISED -
	PLOT SCALE = 40.004 FT / IN.	CHECKED -	REVISED -
	PLOT DATE = 10/21/2011	DATE - 10-21-11	REVISED -

**STATE OF ILLINOIS  
DEPARTMENT OF TRANSPORTATION**

<b>FAP 399 (IL. RTE. 8) EXISTING AND REMOVAL PLANS</b>			
SCALE: AS SHOWN	SHEET NO. OF	SHEETS	STA. 206+00.00 TO STA. 212+00.00

F.A.P. RTE. 399	SECTION 36 R-7	COUNTY TAZEWELL	TOTAL SHEETS 390	SHEET NO. 42
CONTRACT NO. 68370				
ILLINOIS FED. AID PROJECT				