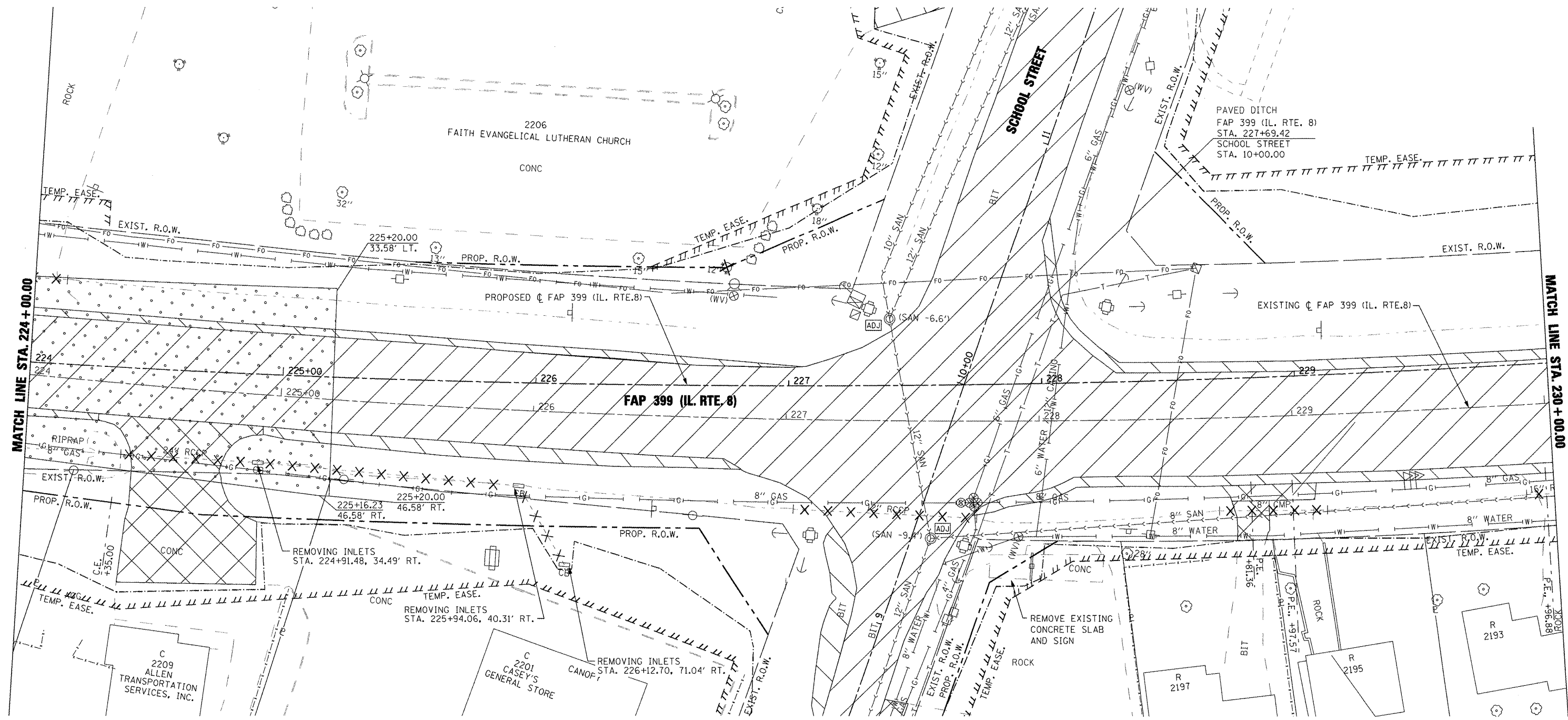



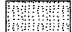





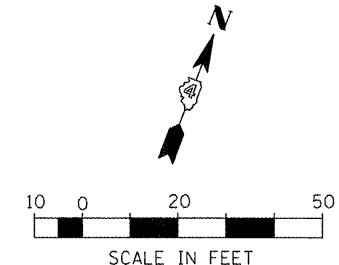
SEE SHEET 53 FOR CONTINUATION



SEE SHEET 53 FOR CONTINUATION

**LEGEND**

-  PAVEMENT REMOVAL
-  BITUMINOUS CONC. SHOULDER REMOVAL
-  DRIVEWAY PAVEMENT REMOVAL
-  HMA SURFACE REMOVAL - BUTT JOINT
-  REMOVAL AND DISPOSAL OF UNSUITABLE MATERIAL
-  PIPE CULVERT REMOVAL
-  TREE REMOVAL



|   |                  |            |                           |   |  |                     |          |                                  |              |           |
|---|------------------|------------|---------------------------|---|--|---------------------|----------|----------------------------------|--------------|-----------|
| FILE NAME =                                       | USER NAME = IDOT | DESIGNED - | REVISED -                 | <b>STATE OF ILLINOIS<br/>DEPARTMENT OF TRANSPORTATION</b> | <b>FAP 399 (IL. RTE. 8)<br/>EXISTING AND REMOVAL PLANS</b> | F.A.P. RTE.         | SECTION  | COUNTY                           | TOTAL SHEETS | SHEET NO. |
| x:\p\projects\200803566\dgn\04-Rte8-sht-REM-5.dgn | DRAWN -          | REVISED -  | 399                       |   |  | 36 R-7              | TAZEWELL | 390                              | 45           |           |
| PLOT SCALE = 40.004 FT / IN.                      | CHECKED -        | REVISED -  | CONTRACT NO. 68370        |   |  |                     |          |                                  |              |           |
| PLOT DATE = 10/21/2011                            | DATE = 10-21-11  | REVISED -  | ILLINOIS FED. AID PROJECT |   |  |                     |          |                                  |              |           |
|   |                  |            |                           |   | SCALE: AS SHOWN  | SHEET NO. OF SHEETS |          | STA. 224+00.00 TO STA. 230+00.00 |              |           |