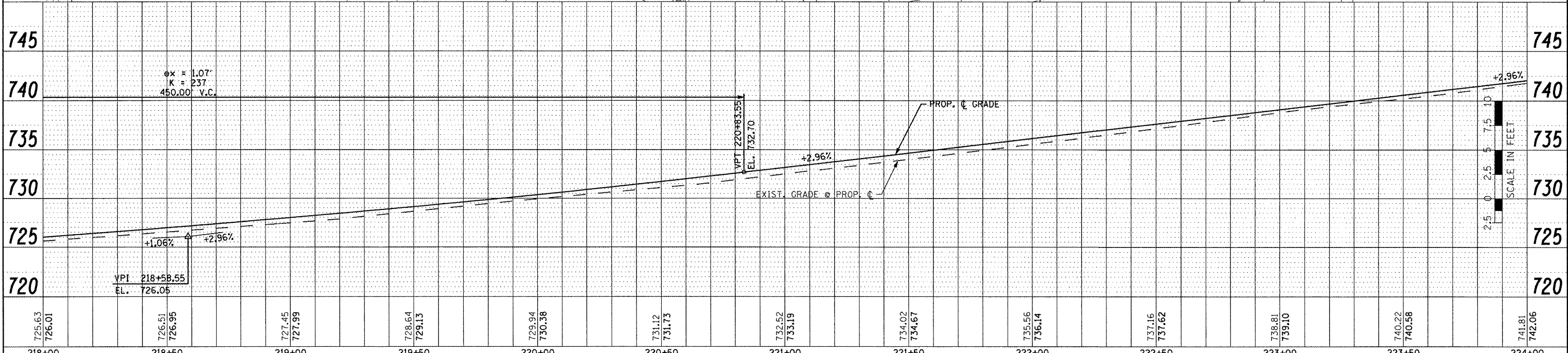
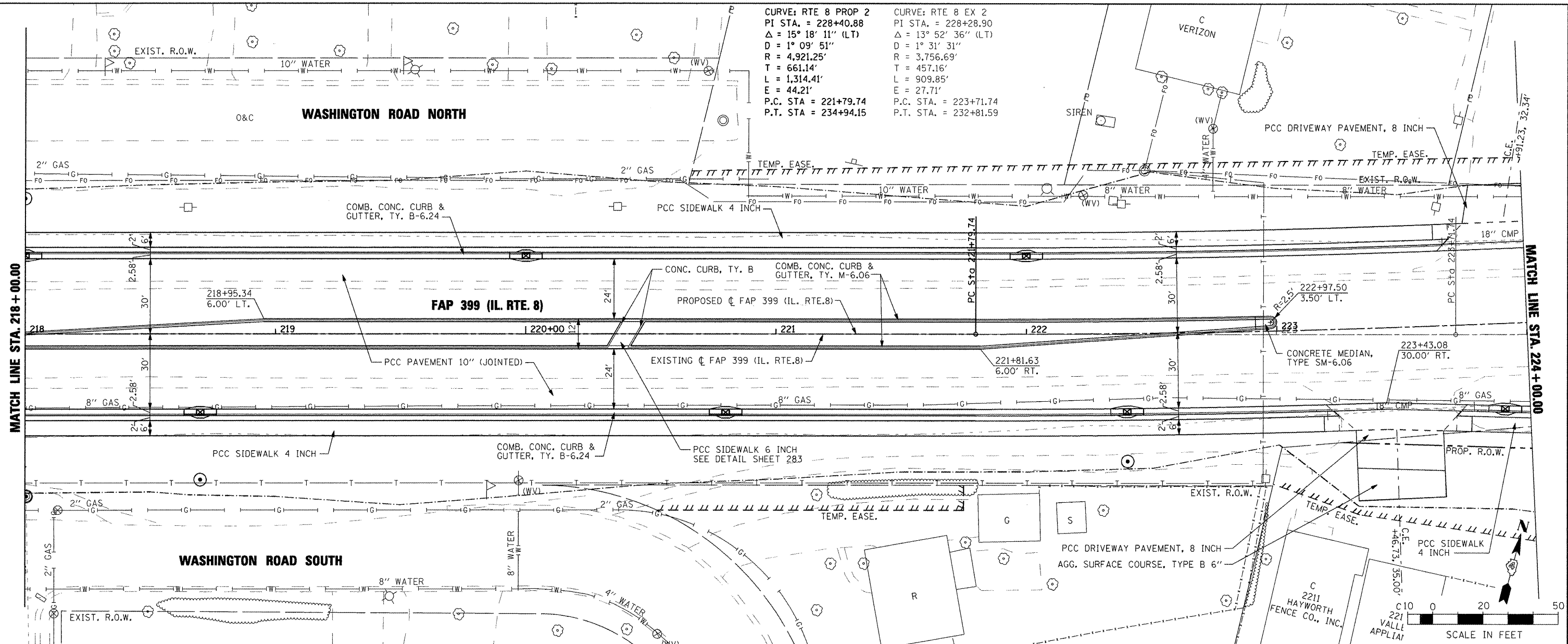


DATE	
BY	
PLAN	
SURVEYED	
ALIGNED	
RT. OF WAY CHECKED	
NOTE BOOK NO.	
CADD FILE NAME	

DATE	
BY	
PROFILE	
SURVEYED	
GRADES CHECKED	
BLM. NOTED	
STRUCTURE NOTATIONS CHECKED	
NOTE BOOK NO.	

CURVE: RTE 8 PROP 2  
 PI STA. = 228+40.88  
 $\Delta = 15^\circ 18' 11''$  (LT)  
 $D = 1^\circ 09' 51''$   
 $R = 4,921.25'$   
 $T = 661.14'$   
 $L = 1,314.41'$   
 $E = 44.21'$   
 P.C. STA = 221+79.74  
 P.T. STA = 234+94.15

CURVE: RTE 8 EX 2  
 PI STA. = 228+28.90  
 $\Delta = 13^\circ 52' 36''$  (LT)  
 $D = 1^\circ 31' 31''$   
 $R = 3,756.69'$   
 $T = 457.16'$   
 $L = 909.85'$   
 $E = 27.71'$   
 P.C. STA. = 223+71.74  
 P.T. STA. = 232+81.59



FILE NAME =	USER NAME = IDOT	DESIGNED -	REVISED -	<b>STATE OF ILLINOIS DEPARTMENT OF TRANSPORTATION</b>	<b>FAP 399 (IL. RTE. 8) ROADWAY PLAN AND PROFILE</b>	F.A.P. RTE. 399	SECTION 36 R-7	COUNTY TAZEWELL	TOTAL SHEETS 390	SHEET NO. 57		
x:\projects\200803566\dgn\04-Rta8-sht-PLN-PRF-4.dgn	PLLOT SCALE = 40.8024' / IN.	DRAWN -	REVISED -			SCALE: AS SHOWN	SHEET NO. OF SHEETS	STA. 218+00.00 TO STA. 224+00.00	ILLINOIS FED. AID PROJECT			
	PLLOT DATE = 10/21/2011	CHECKED -	REVISED -			CONTRACT NO. 68370						
		DATE = 10-21-11	REVISED -									