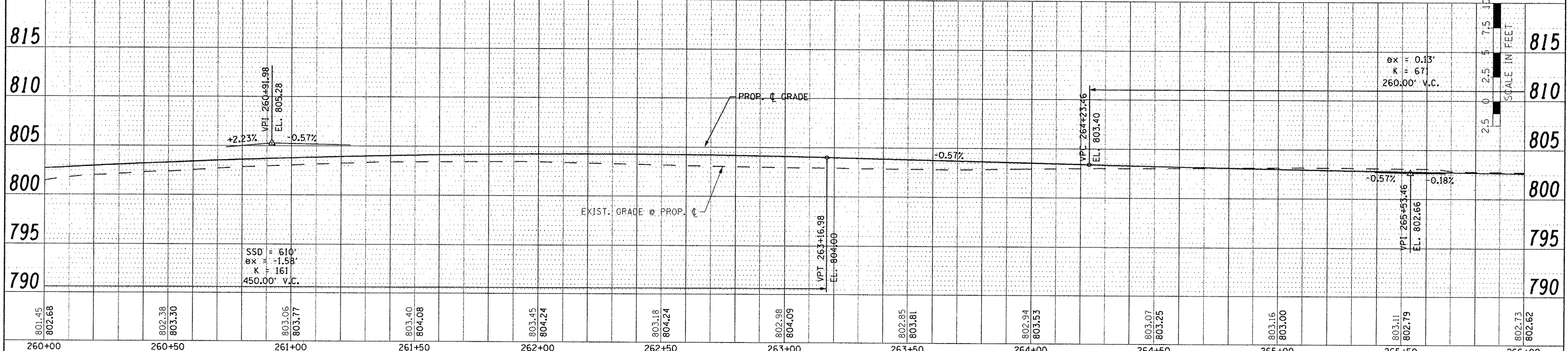
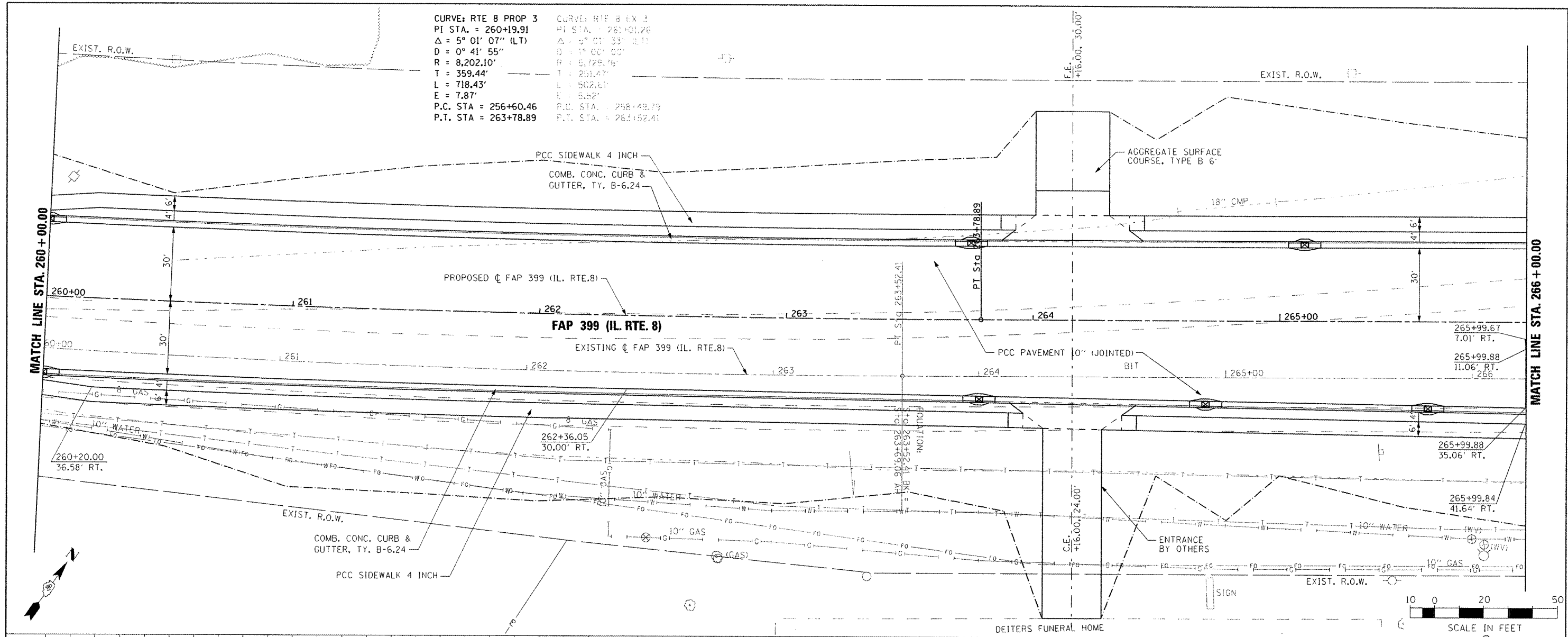


PLAN	DATE	BY
REVISED		
NOTED		
NO.		

PROFILE	DATE	BY
REVISED		
NOTED		
NO.		

CURVE: RTE 8 PROP 3
 PI STA. = 260+19.91
 Δ = 5° 01' 07" (LT)
 D = 0° 41' 55"
 R = 8,202.10'
 T = 359.44'
 L = 718.43'
 E = 7.87'
 P.C. STA. = 256+60.46
 P.T. STA. = 263+78.89

CURVE: RTE 8 EX 3
 PI STA. = 261+01.26
 Δ = 5° 01' 33" (LT)
 D = 1° 00' 00"
 R = 5,728.16'
 T = 251.47'
 L = 502.61'
 E = 5.52'
 P.C. STA. = 258+48.79
 P.T. STA. = 263+52.41



FILE NAME	USER NAME = 1001	DESIGNED	REVISED	STATE OF ILLINOIS DEPARTMENT OF TRANSPORTATION	FAP 399 (IL RTE. 8) ROADWAY PLAN AND PROFILE	F.A.P. RTE.	SECTION	COUNTY	TOTAL SHEETS	
X:\Projects\2008\2356\102\104-Rte8-sh1-PL	PRF-11.dgn	DRAWN	REVISED			399	36 R-7	TAZEWELL	390	64
PLT SCALE = 48.7282' / 1"	CHECKED	REVISED	REVISED			SCALE: AS SHOWN SHEET NO. OF SHEETS STA. 260+00.00 TO STA. 266+00.00		CONTRACT NO. 68370		
PLT DATE = 12/31/2011	DATE	REVISED	REVISED			ILLINOIS FED. AID PROJECT				