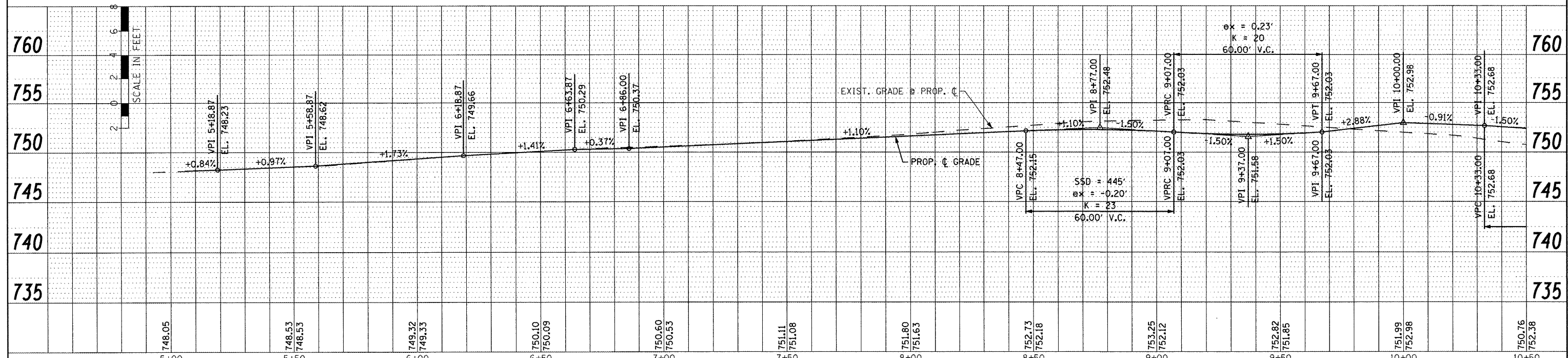
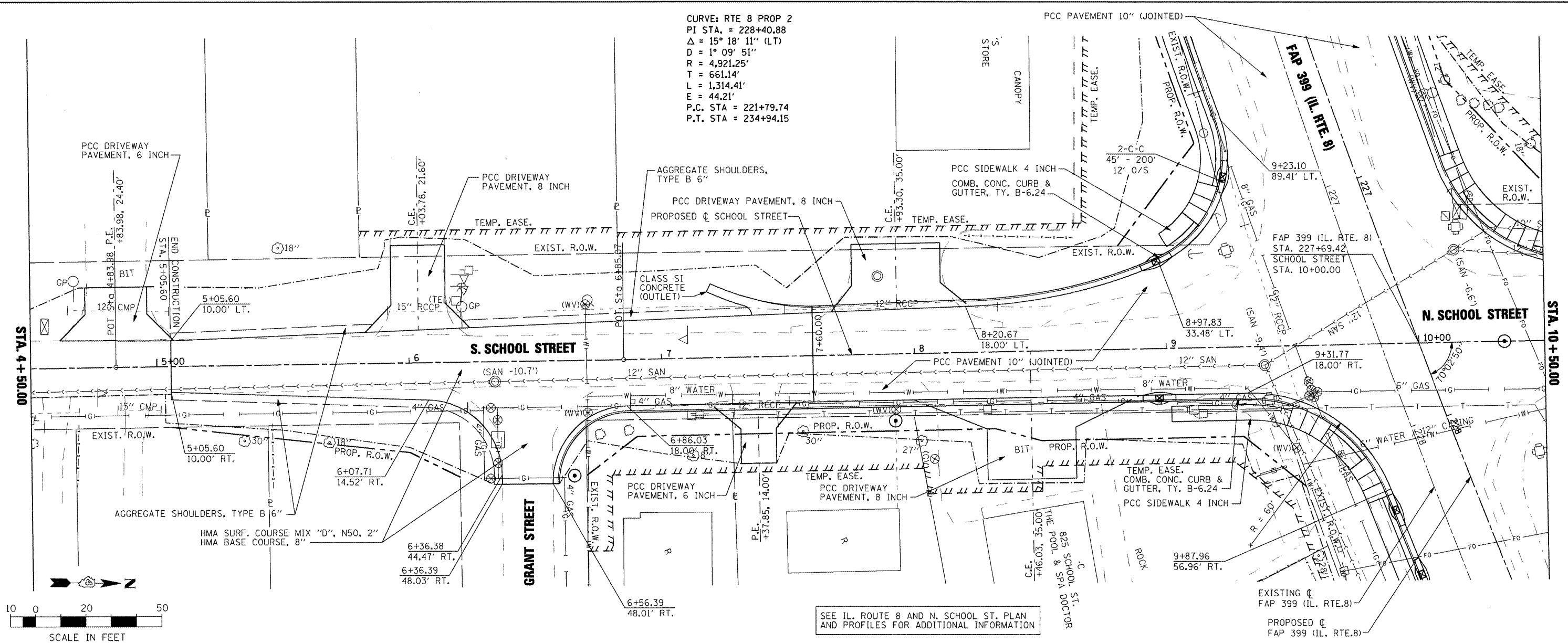


DATE	
BY	
PLAN	SURVEYED
	ALIGNED
	CHECKED
	NO. 1
	NO. 2
	NO. 3
	NO. 4
	NO. 5
	NO. 6
	NO. 7
	NO. 8
	NO. 9
	NO. 10

DATE	
BY	
PROFILE	SURVEYED
	GRADES CHECKED
	EL. NOTED
	STRUCTURE NOTATIONS OK'D
	NO. 1
	NO. 2
	NO. 3
	NO. 4
	NO. 5
	NO. 6
	NO. 7
	NO. 8
	NO. 9
	NO. 10

CURVE: RTE 8 PROP 2
 PI STA. = 228+40.88
 $\Delta = 15^\circ 18' 11''$ (LT)
 $D = 1^\circ 09' 51''$
 $R = 4,921.25'$
 $T = 661.14'$
 $L = 1,314.41'$
 $E = 44.21'$
 P.C. STA = 221+79.74
 P.T. STA = 234+94.15



FILE NAME =	USER NAME = IDOT	DESIGNED -	REVISED -	STATE OF ILLINOIS DEPARTMENT OF TRANSPORTATION 10-21-11	FAP 399 (IL. RTE. 8) SOUTH SCHOOL STREET - ROADWAY PLAN AND PROFILE	F.A.P. SECTION	COUNTY	TOTAL SHEETS	SHEET NO.	
x:\projects\200803566\dgn\104-Rte8-shr-PLN	PRF-S-School.dgn	DRAWN -	REVISED -			399	36 R-7	TAZEWELL	390	66
PLOT SCALE = 48.00' / IN.		CHECKED -	REVISED -			CONTRACT NO. 68370				
PLOT DATE = 10/21/2011		DATE -	REVISED -			ILLINOIS FED. AID PROJECT				