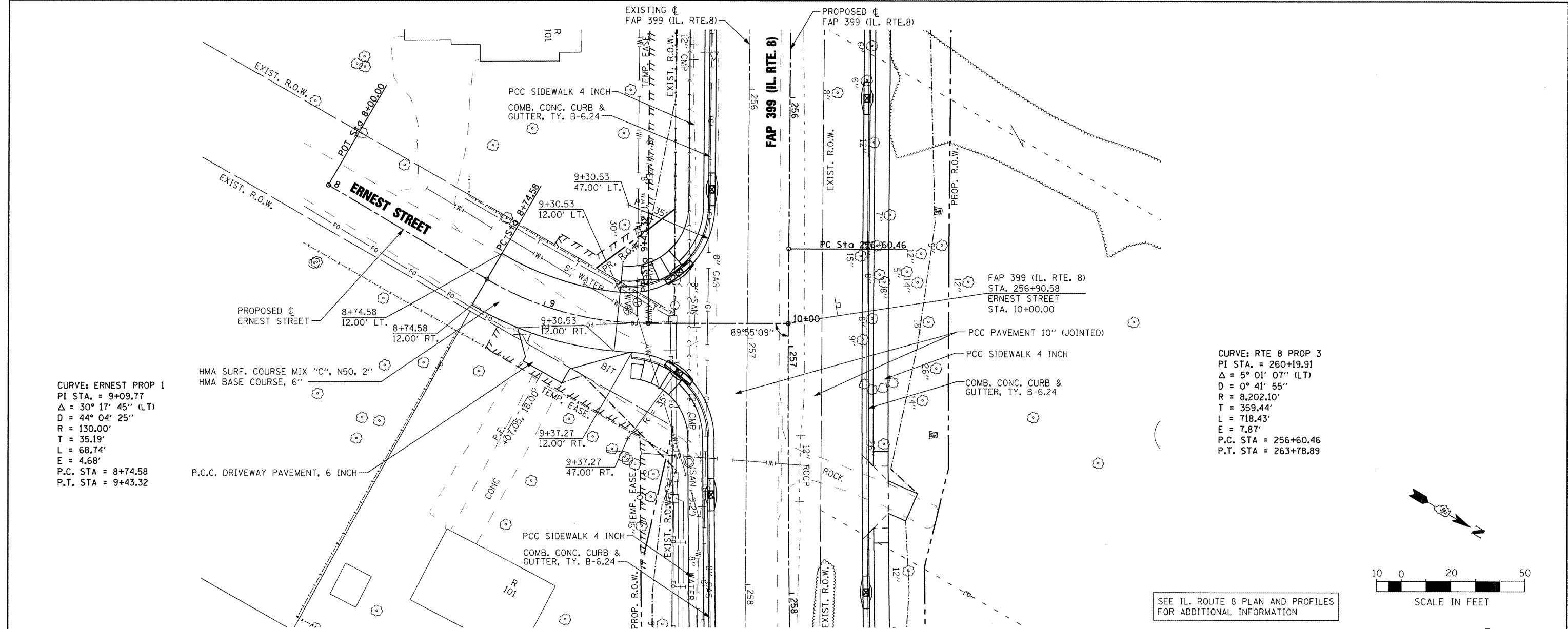


DATE	
BY	
PLAN	
SURVEYED	
ALIGNED	
CHECKED	
PT. OF WAY	
CHECKED	
NO.	
DATE	
BY	
PROFILE	
SURVEYED	
GRADES	
CHECKED	
NO.	
DATE	
BY	

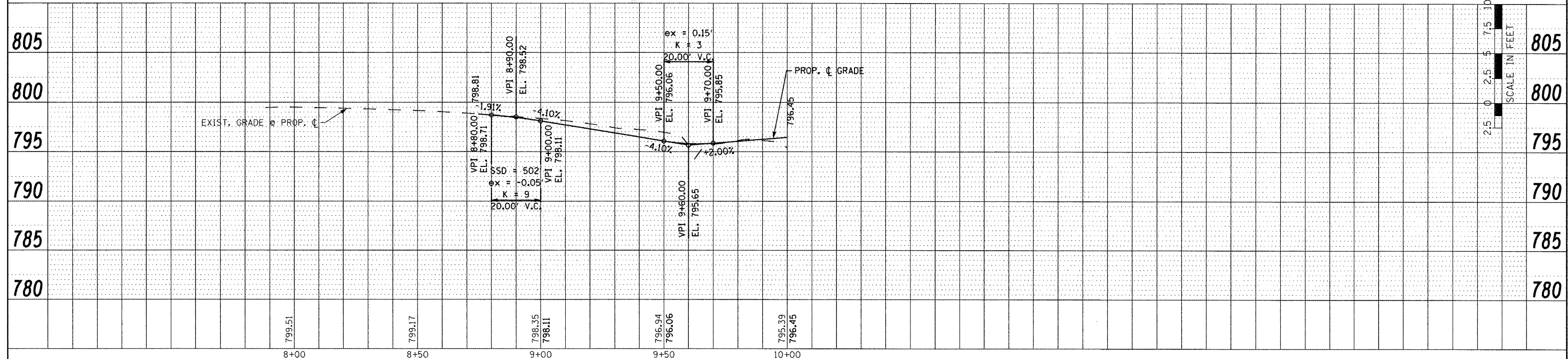
DATE	
BY	
PROFILE	
SURVEYED	
GRADES	
CHECKED	
NO.	
DATE	
BY	



CURVE: ERNEST PROP 1  
 PI STA. = 9+09.77  
 $\Delta = 30^\circ 17' 45''$  (LT)  
 $D = 44^\circ 04' 25''$   
 $R = 130.00'$   
 $T = 35.19'$   
 $L = 68.74'$   
 $E = 4.68'$   
 P.C. STA = 8+74.58  
 P.T. STA = 9+43.32

CURVE: RTE 8 PROP 3  
 PI STA. = 260+19.91  
 $\Delta = 5^\circ 01' 07''$  (LT)  
 $D = 0^\circ 41' 55''$   
 $R = 8,202.10'$   
 $T = 359.44'$   
 $L = 718.43'$   
 $E = 7.87'$   
 P.C. STA = 256+60.46  
 P.T. STA = 263+78.89

SEE IL. ROUTE 8 PLAN AND PROFILES FOR ADDITIONAL INFORMATION



FILE NAME =	USER NAME = IDOT	DESIGNED -	REVISED -	<b>STATE OF ILLINOIS DEPARTMENT OF TRANSPORTATION</b>	<b>FAP 399 (IL. RTE. 8) ERNEST STREET - ROADWAY PLAN AND PROFILE</b>	F.A.P. RTE. 399	SECTION 36 R-7	COUNTY TAZEWELL	TOTAL SHEETS 390	SHEET NO. 74	
x:\projects\200803566\dgn\04-Rte8-sht-PLN-PRF-Ernest.dgn	PLOT SCALE = 40.00' / IN.	CHECKED -	REVISED -			SCALE: AS SHOWN	SHEET NO. OF SHEETS	STA. 8+00.00 TO STA. 10+00.00	CONTRACT NO. 68370		ILLINOIS FED. AID PROJECT
PLOT DATE = 10/21/2011	DATE = 10-21-11	REVISED -	REVISED -								