
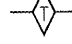

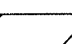
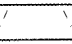

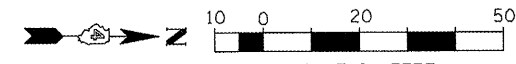
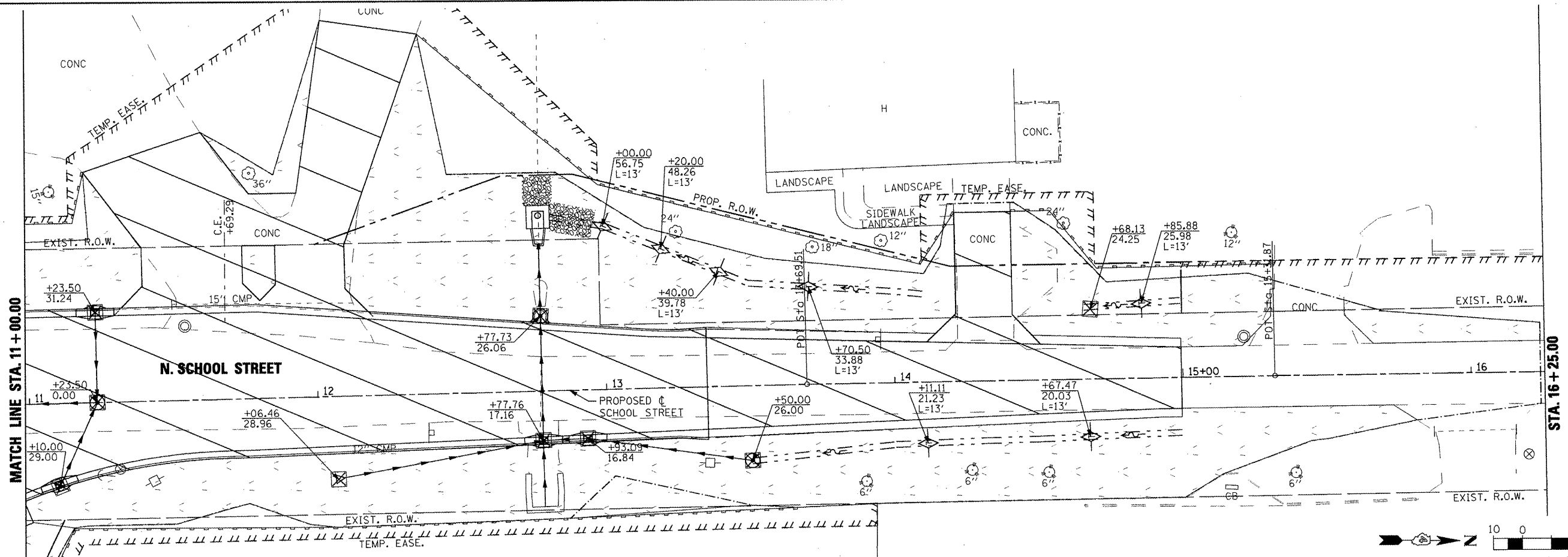
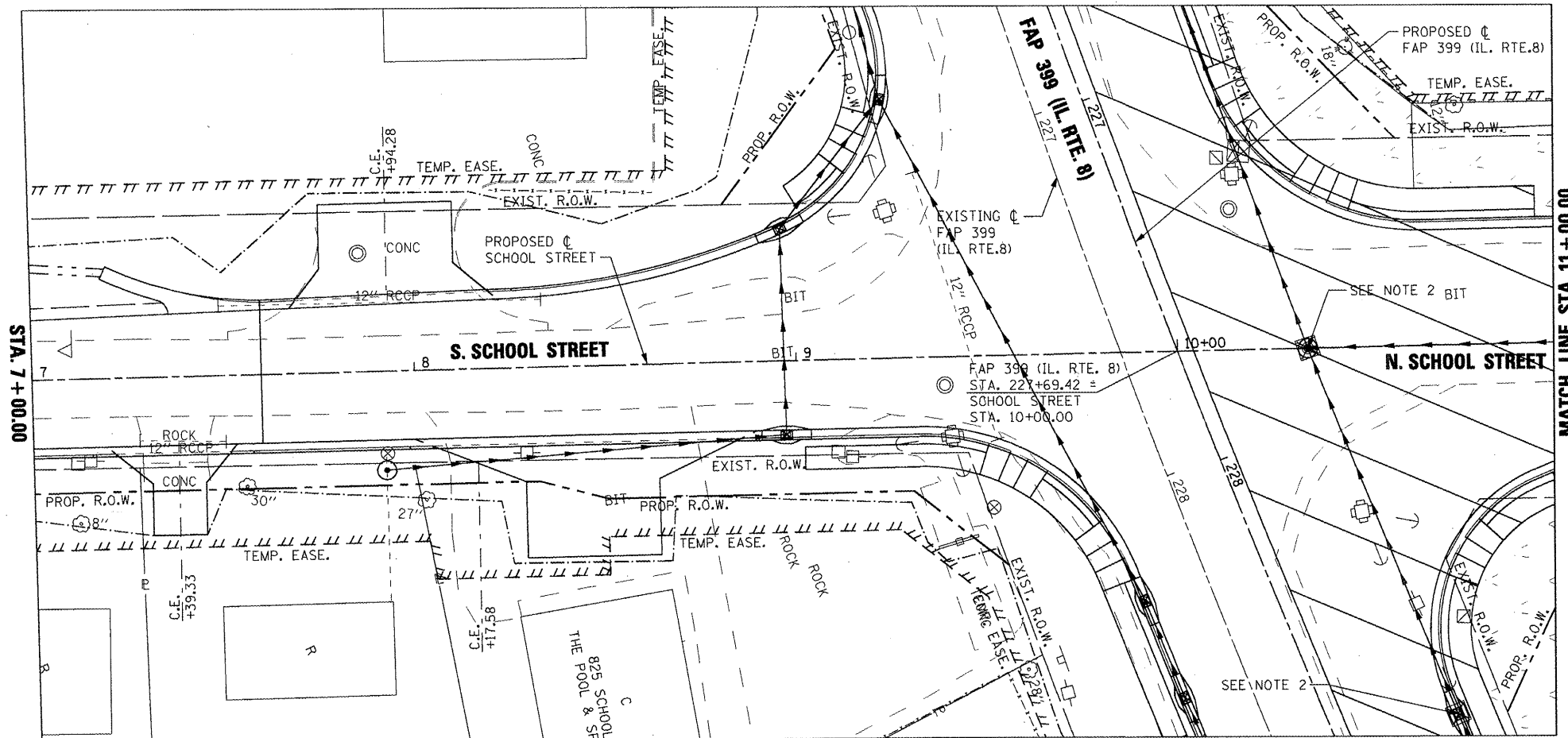


NOTE
1. STATION/OFFSETS ARE BASED ON SCHOOL STREET ALIGNMENT.
2. SEE IL. RTE. 8 SHEETS FOR ITEMS ALONG IL RTE 8 ALIGNMENT.

LEGEND:

-  INLET AND PIPE PROTECTION
-  TEMPORARY DITCH CHECK
-  PERIMETER EROSION BARRIER
-  DIRECTION OF FLOW
-  WORK ZONE
-  TEMPORARY EROSION CONTROL SEEDING (SEEDING CLASS 7)



FILE NAME = x:\projects\200803566\dgn\04-Rte8-shr-E	USER NAME = IDOT 05-17-School.dgn	DESIGNED - MD DRAWN - LF	REVISED - REVISED - REVISED - REVISED -	STATE OF ILLINOIS DEPARTMENT OF TRANSPORTATION		FAP 399 (IL. RTE. 8) EROSION CONTROL PLAN- STAGE 1		F.A.P. RTE. 399	SECTION 36 R-7	COUNTY TAZEWELL	TOTAL SHEETS 390	SHEET NO. 162
PLOT SCALE = 40.00' / IN. PLOT DATE = 10/21/2011				CHECKED - GG DATE - 11/25/09				SCALE: AS SHOWN SHEET NO. OF SHEETS		CONTRACT NO. 68370 ILLINOIS FED. AID PROJECT		