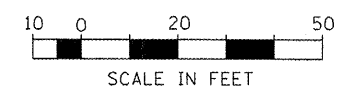
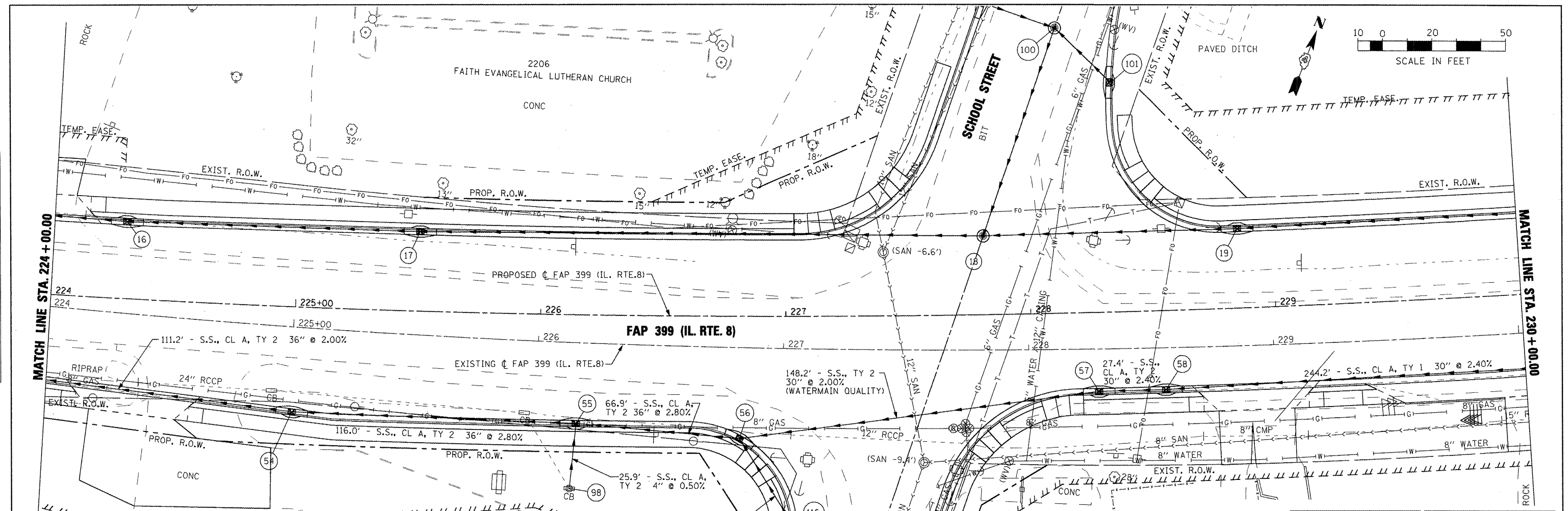
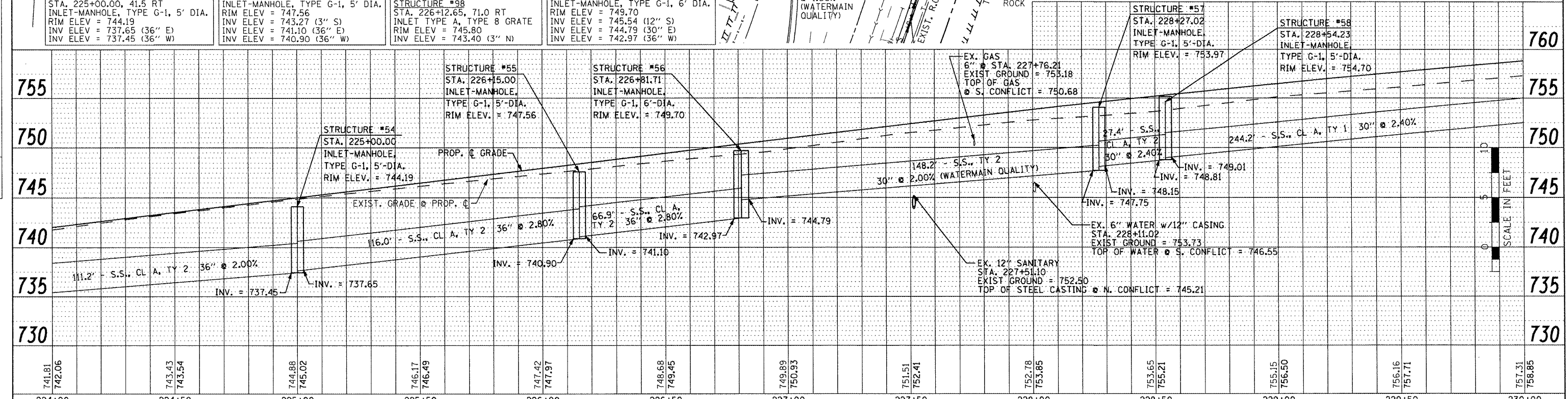


DATE	
BY	
REVISIONS	
NO.	
DESCRIPTION	
DATE	
BY	
REVISIONS	
NO.	
DESCRIPTION	
DATE	
BY	
REVISIONS	
NO.	
DESCRIPTION	
DATE	
BY	
REVISIONS	
NO.	
DESCRIPTION	
DATE	
BY	
REVISIONS	
NO.	
DESCRIPTION	

DATE	
BY	
REVISIONS	
NO.	
DESCRIPTION	
DATE	
BY	
REVISIONS	
NO.	
DESCRIPTION	
DATE	
BY	
REVISIONS	
NO.	
DESCRIPTION	
DATE	
BY	
REVISIONS	
NO.	
DESCRIPTION	



STRUCTURE #54 STA. 225+00.00, 41.5 RT INLET-MANHOLE, TYPE G-1, 5' DIA. RIM ELEV = 744.19 INV ELEV = 737.65 (36" E) INV ELEV = 737.45 (36" W)	STRUCTURE #55 STA. 226+15.00, 43.0' RT INLET-MANHOLE, TYPE G-1, 5' DIA. RIM ELEV = 747.56 INV ELEV = 743.27 (3" S) INV ELEV = 741.10 (36" E) INV ELEV = 740.90 (36" W)	STRUCTURE #98 STA. 226+12.65, 71.0 RT INLET TYPE A, TYPE 8 GRATE RIM ELEV = 745.80 INV ELEV = 743.40 (3" N)	STRUCTURE #56 STA. 226+81.71, 48.7 RT INLET-MANHOLE, TYPE G-1, 6' DIA. RIM ELEV = 749.70 INV ELEV = 745.54 (12" S) INV ELEV = 744.79 (30" E) INV ELEV = 742.97 (36" W)	STRUCTURE #116 STA. 227+76.21, 51.1' LT INLET, TYPE G-1 RIM ELEV = 751.48 INV ELEV = 746.16 (12" E) INV ELEV = 745.96 (12" N)	STRUCTURE #102 STA. 228+97.00, 18.0' RT INLET, TYPE G-1 RIM ELEV = 752.51 INV ELEV = 746.70 (12" W)	STRUCTURE #57 STA. 228+27.02, 31.0' RT INLET-MANHOLE, TYPE G-1, 5' DIA. RIM ELEV = 753.97 INV. = 748.15 (30" E) INV. = 747.75 (30" W)	STRUCTURE #58 STA. 228+54.23, 31.0' RT INLET-MANHOLE, TYPE G-1, 5' DIA. RIM ELEV = 754.70 INV ELEV = 749.01 (30" E) INV ELEV = 748.81 (30" W)
--	---	--	---	---	--	---	---



FILE NAME =	USER NAME = JDOT	DESIGNED -	REVISED -	STATE OF ILLINOIS DEPARTMENT OF TRANSPORTATION				F.A. RTE. =	SECTION	COUNTY	TOTAL SHEETS	SHEET NO.
xc:\proj\jct\200803566\dgn\04-Rte8-shd-DRAIN-S_SOUTH.dgn		DRAWN -	REVISED -	FAP 399 (IL RTE. 8)				399	36 R-7	TAZEWELL	390	193
PLOT SCALE = 40,0000 / IN.		CHECKED -	REVISED -	DRAINAGE PLAN AND PROFILE - SOUTH				CONTRACT NO. 68370				
PLOT DATE = 10/21/2011		DATE -	REVISED -	SCALE: AS SHOWN SHEET NO. OF SHEETS STA. 224+00.00 TO STA. 230+00.00				ILLINOIS FED. AID PROJECT				