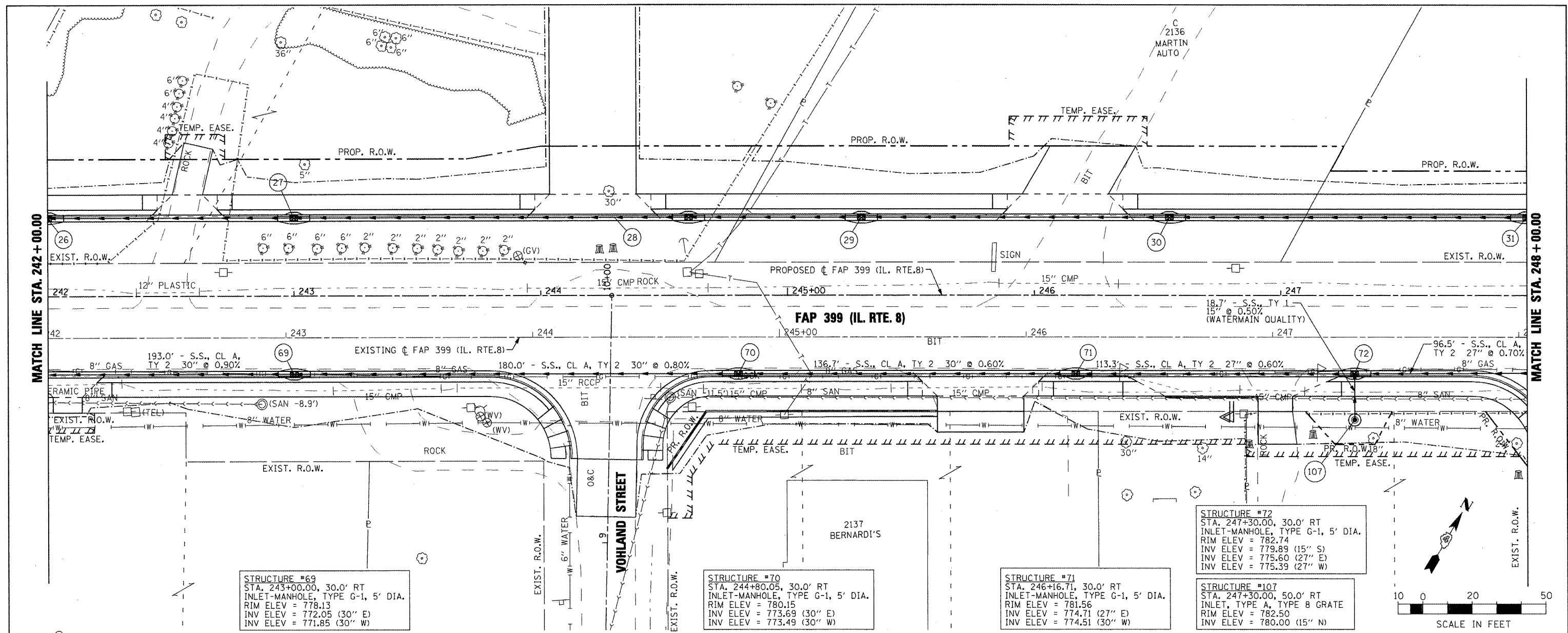


DATE	
BY	
REVISIONS	
NO.	
DESCRIPTION	
DATE	
BY	
REVISIONS	
NO.	
DESCRIPTION	
DATE	
BY	
REVISIONS	
NO.	
DESCRIPTION	

DATE	
BY	
REVISIONS	
NO.	
DESCRIPTION	
DATE	
BY	
REVISIONS	
NO.	
DESCRIPTION	
DATE	
BY	
REVISIONS	
NO.	
DESCRIPTION	



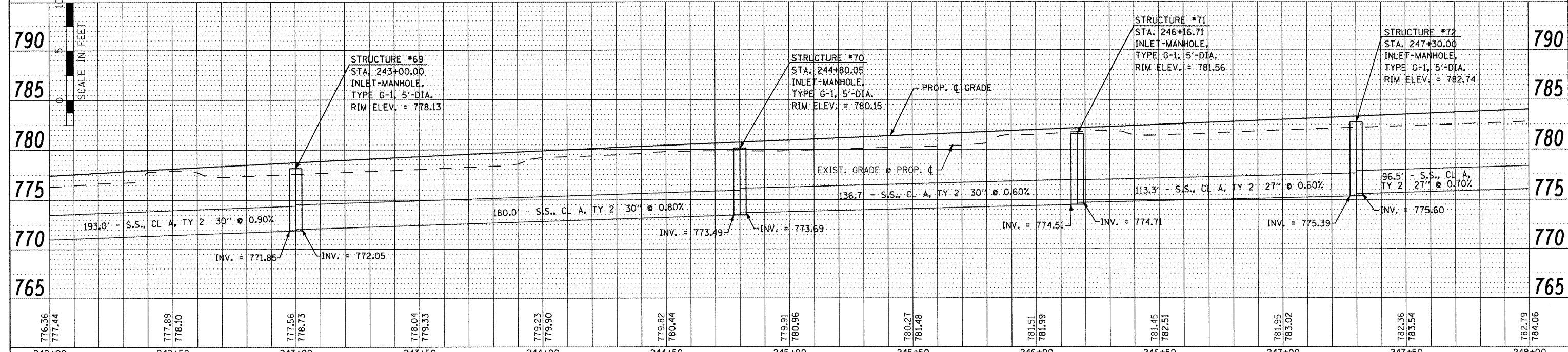
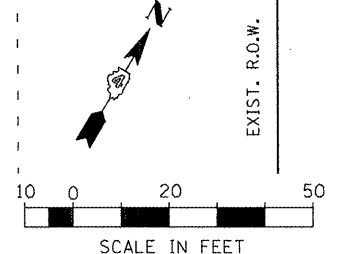
STRUCTURE #69
 STA. 243+00.00, 30.0' RT
 INLET-MANHOLE, TYPE G-1, 5' DIA.
 RIM ELEV = 778.13
 INV ELEV = 772.05 (30" E)
 INV ELEV = 771.85 (30" W)

STRUCTURE #70
 STA. 244+80.05, 30.0' RT
 INLET-MANHOLE, TYPE G-1, 5' DIA.
 RIM ELEV = 780.15
 INV ELEV = 773.69 (30" E)
 INV ELEV = 773.49 (30" W)

STRUCTURE #71
 STA. 246+16.71, 30.0' RT
 INLET-MANHOLE, TYPE G-1, 5' DIA.
 RIM ELEV = 781.56
 INV ELEV = 774.71 (27" E)
 INV ELEV = 774.51 (30" W)

STRUCTURE #72
 STA. 247+30.00, 30.0' RT
 INLET-MANHOLE, TYPE G-1, 5' DIA.
 RIM ELEV = 782.74
 INV ELEV = 779.89 (15" S)
 INV ELEV = 775.60 (27" E)
 INV ELEV = 775.39 (27" W)

STRUCTURE #107
 STA. 247+30.00, 50.0' RT
 INLET, TYPE A, TYPE 8 GRATE
 RIM ELEV = 782.50
 INV ELEV = 780.00 (15" N)



FILE NAME =	USER NAME = ID01	DESIGNED -	REVISED -	STATE OF ILLINOIS DEPARTMENT OF TRANSPORTATION		FAP 399 (IL. RTE. 8)		F.A. RTE.	SECTION	COUNTY	TOTAL SHEETS	SHEET NO.
x:\projects\200803568\dgn\04-Rte8-sht-DRAIN-B_SOUTH.dgn		DRAWN -	REVISED -			399	36 R-7	TAZEWELL	390	196		
PLOT SCALE = 40.0000' / IN.		CHECKED -	REVISED -	SCALE: AS SHOWN		SHEET NO. OF SHEETS		STA. 242+00.00 TO STA. 248+00.00		ILLINOIS FED. AID PROJECT		
PLOT DATE = 10/21/2011		DATE -	REVISED -							CONTRACT NO. 68370		