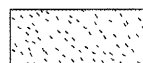
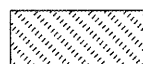
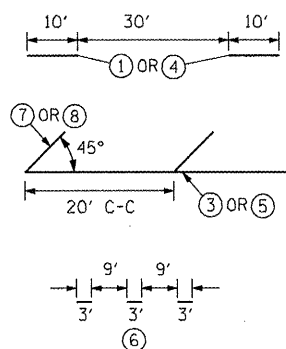


**LANDSCAPING LEGEND**

-  SEEDING, CLASS 2A
-  SODDING, SALT TOLERANT

**PAVEMENT MARKING LEGEND**

- ① PREFORMED PLASTIC PAVEMENT MARKING - LINE 6" WHITE SKIP DASH
- ② EPOXY PAVEMENT MARKING - LINE 4" YELLOW SOLID (DOUBLE LINE)
- ③ EPOXY PAVEMENT MARKING - LINE 4" YELLOW SOLID
- ④ EPOXY PAVEMENT MARKING - LINE 4" YELLOW SKIP DASH
- ⑤ EPOXY PAVEMENT MARKING - LINE 8" WHITE SOLID
- ⑥ EPOXY PAVEMENT MARKING - LINE 8" WHITE SKIP DASH
- ⑦ EPOXY PAVEMENT MARKING - LINE 12" YELLOW SOLID
- ⑧ EPOXY PAVEMENT MARKING - LINE 12" WHITE SOLID
- ⑨ EPOXY PAVEMENT MARKING - LINE 24" WHITE SOLID (STOP BAR)
- ⑩ EPOXY PAVEMENT MARKING - LETTERS AND SYMBOLS



1. PAVEMENT MARKINGS SHALL BE IN ACCORDANCE WITH DISTRICT CADD DETAILS - STANDARD 780001.

**RAISED REFLECTIVE PAVEMENT MARKERS (RRPM) LEGEND**

- ① ▲ ONE-WAY CRYSTAL MARKER AT 80' CENTERS
- ② ◆ TWO-WAY AMBER MARKER AT 40' CENTERS

**SIGN POST LEGEND**

- WOOD POST LENGTH
- OFFSET FROM EDGE OF PAVEMENT

• SEE STANDARD 720006 FOR OFFSET

FILE NAME =	USER NAME = IDOT	DESIGNED -	REVISED -
xi\projects\200803566\dgn\04-Rte8-sht-1	W-K-2.dgn	DRAWN -	REVISED -
PLOT SCALE = 48.004 FT / IN.	CHECKED -	REVISED -	REVISED -
PLOT DATE = 10/21/2011	DATE = 10-21-11	REVISED -	REVISED -

**STATE OF ILLINOIS  
DEPARTMENT OF TRANSPORTATION**

**FAP 399 (IL. RTE. 8)  
PAVEMENT MARKING & LANDSCAPING PLANS**

SCALE: AS SHOWN SHEET NO. OF SHEETS STA. 194+00.00 TO STA. 200+00.00

F.A.P. RTE.	SECTION	COUNTY	TOTAL SHEETS	SHEET NO.
399	36 R-7	TAZEWELL	390	238
CONTRACT NO. 68370			ILLINOIS FED. AID PROJECT	