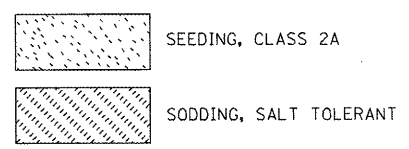
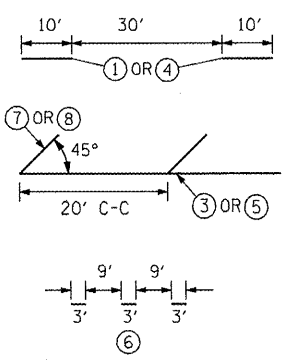


LANDSCAPING LEGEND



PAVEMENT MARKING LEGEND

- ① PREFORMED PLASTIC PAVEMENT MARKING - LINE 6" WHITE SKIP DASH
- ② EPOXY PAVEMENT MARKING - LINE 4" YELLOW SOLID (DOUBLE LINE)
- ③ EPOXY PAVEMENT MARKING - LINE 4" YELLOW SOLID
- ④ EPOXY PAVEMENT MARKING - LINE 4" YELLOW SKIP DASH
- ⑤ EPOXY PAVEMENT MARKING - LINE 8" WHITE SOLID
- ⑥ EPOXY PAVEMENT MARKING - LINE 8" WHITE SKIP DASH
- ⑦ EPOXY PAVEMENT MARKING - LINE 12" YELLOW SOLID
- ⑧ EPOXY PAVEMENT MARKING - LINE 12" WHITE SOLID
- ⑨ EPOXY PAVEMENT MARKING - LINE 24" WHITE SOLID (STOP BAR)
- ⑩ EPOXY PAVEMENT MARKING - LETTERS AND SYMBOLS

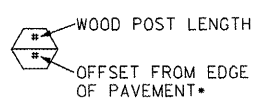


1. PAVEMENT MARKINGS SHALL BE IN ACCORDANCE WITH DISTRICT CADD DETAILS - STANDARD 780001.

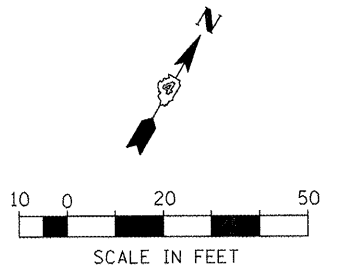
RAISED REFLECTIVE PAVEMENT MARKERS (RRPM) LEGEND

- ① ▲ ONE-WAY CRYSTAL MARKER AT 80' CENTERS
- ② ◆ TWO-WAY AMBER MARKER AT 40' CENTERS

SIGN POST LEGEND



• SEE STANDARD 720006 FOR OFFSET



FILE NAME =	USER NAME = IDOT	DESIGNED -	REVISED -	STATE OF ILLINOIS DEPARTMENT OF TRANSPORTATION	FAP 399 (IL. RTE. 8) PAVEMENT MARKING & LANDSCAPING PLANS	F.A.P. RTE.	SECTION	COUNTY	TOTAL SHEETS	SHEET NO.	
x:\projects\220803566\dgn\04-Rta8-sht-P	W-7.dgn	DRAWN -	REVISED -			399	36 R-7	TAZEWELL	390	245	
PLOT SCALE = 48,004 FT / IN.	CHECKED -	REVISED -				CONTRACT NO. 68370					
PLOT DATE = 10/21/2011	DATE = 10-21-11	REVISED -				ILLINOIS FED. AID PROJECT					