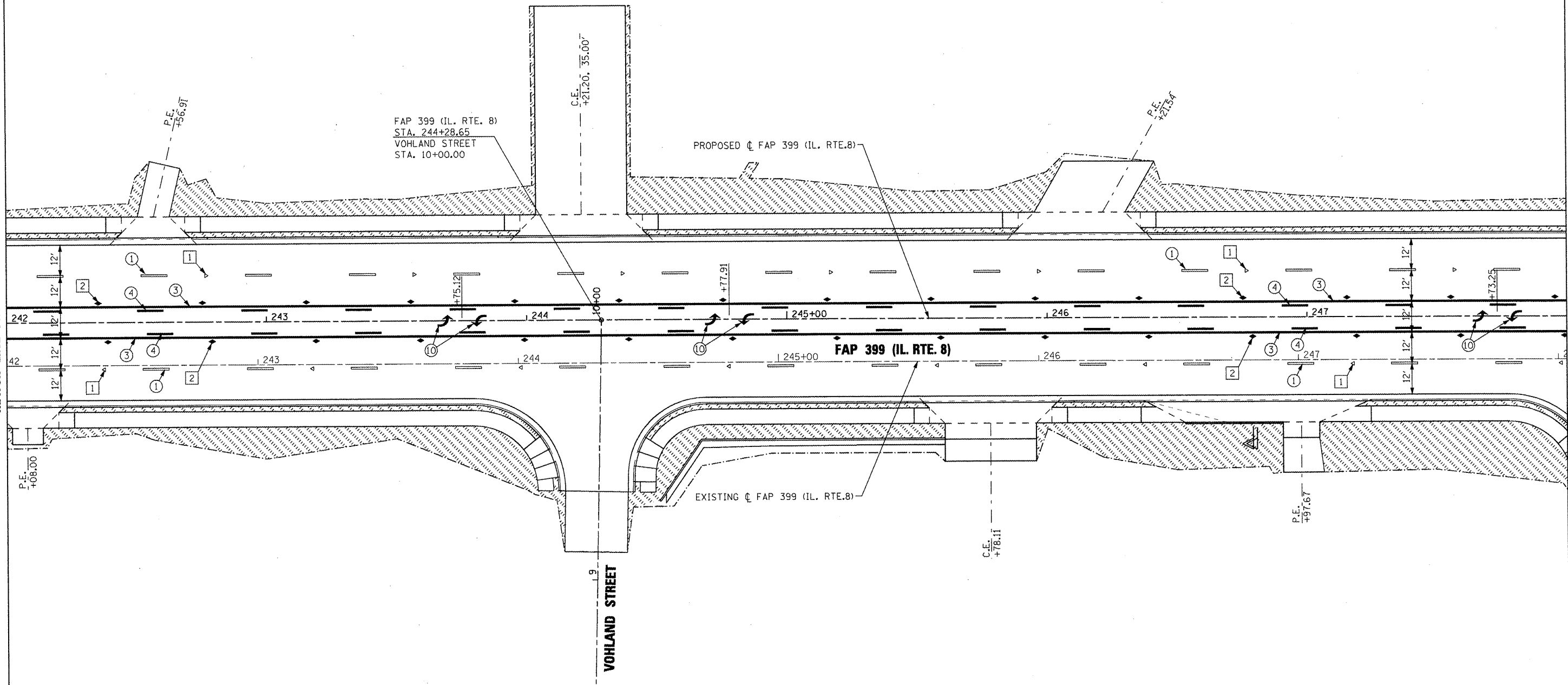
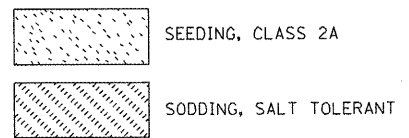


MATCH LINE STA. 242+00.00

MATCH LINE STA. 248+00.00

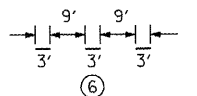
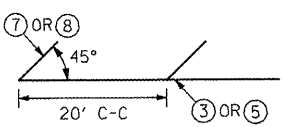
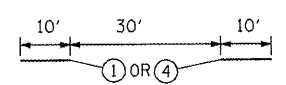


**LANDSCAPING LEGEND**



**PAVEMENT MARKING LEGEND**

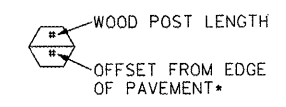
- ① PREFORMED PLASTIC PAVEMENT MARKING - LINE 6" WHITE SKIP DASH
- ② EPOXY PAVEMENT MARKING - LINE 4" YELLOW SOLID (DOUBLE LINE)
- ③ EPOXY PAVEMENT MARKING - LINE 4" YELLOW SOLID
- ④ EPOXY PAVEMENT MARKING - LINE 4" YELLOW SKIP DASH
- ⑤ EPOXY PAVEMENT MARKING - LINE 8" WHITE SOLID
- ⑥ EPOXY PAVEMENT MARKING - LINE 8" WHITE SKIP DASH
- ⑦ EPOXY PAVEMENT MARKING - LINE 12" YELLOW SOLID
- ⑧ EPOXY PAVEMENT MARKING - LINE 12" WHITE SOLID
- ⑨ EPOXY PAVEMENT MARKING - LINE 24" WHITE SOLID (STOP BAR)
- ⑩ EPOXY PAVEMENT MARKING - LETTERS AND SYMBOLS



**RAISED REFLECTIVE PAVEMENT MARKERS (RRPM) LEGEND**

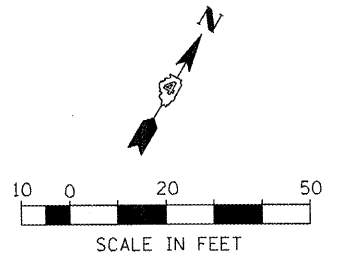
- ① Δ ONE-WAY CRYSTAL MARKER AT 80' CENTERS
- ② ◆ TWO-WAY AMBER MARKER AT 40' CENTERS

**SIGN POST LEGEND**



1. PAVEMENT MARKINGS SHALL BE IN ACCORDANCE WITH DISTRICT CADD DETAILS - STANDARD 780001.

\* SEE STANDARD 720006 FOR OFFSET



FILE NAME =	USER NAME = IDOT	DESIGNED -	REVISED -	<b>STATE OF ILLINOIS DEPARTMENT OF TRANSPORTATION</b>	<b>FAP 399 (IL. RTE. 8) PAVEMENT MARKING &amp; LANDSCAPING PLANS</b>			F.A.P. RTE. 399	SECTION 36 R-7	COUNTY TAZEWELL	TOTAL SHEETS 390	SHEET NO. 246
xi\pro\jects\200803566\dgn\04-Rte8-sht-PK-8.dgn		DRAWN -	REVISED -		SCALE: AS SHOWN	SHEET NO.	OF SHEETS	STA. 242+00.00 TO STA. 248+00.00	CONTRACT NO. 68370		ILLINOIS FED. AID PROJECT	
		CHECKED -	REVISED -									
		DATE - 10-21-11	REVISED -									