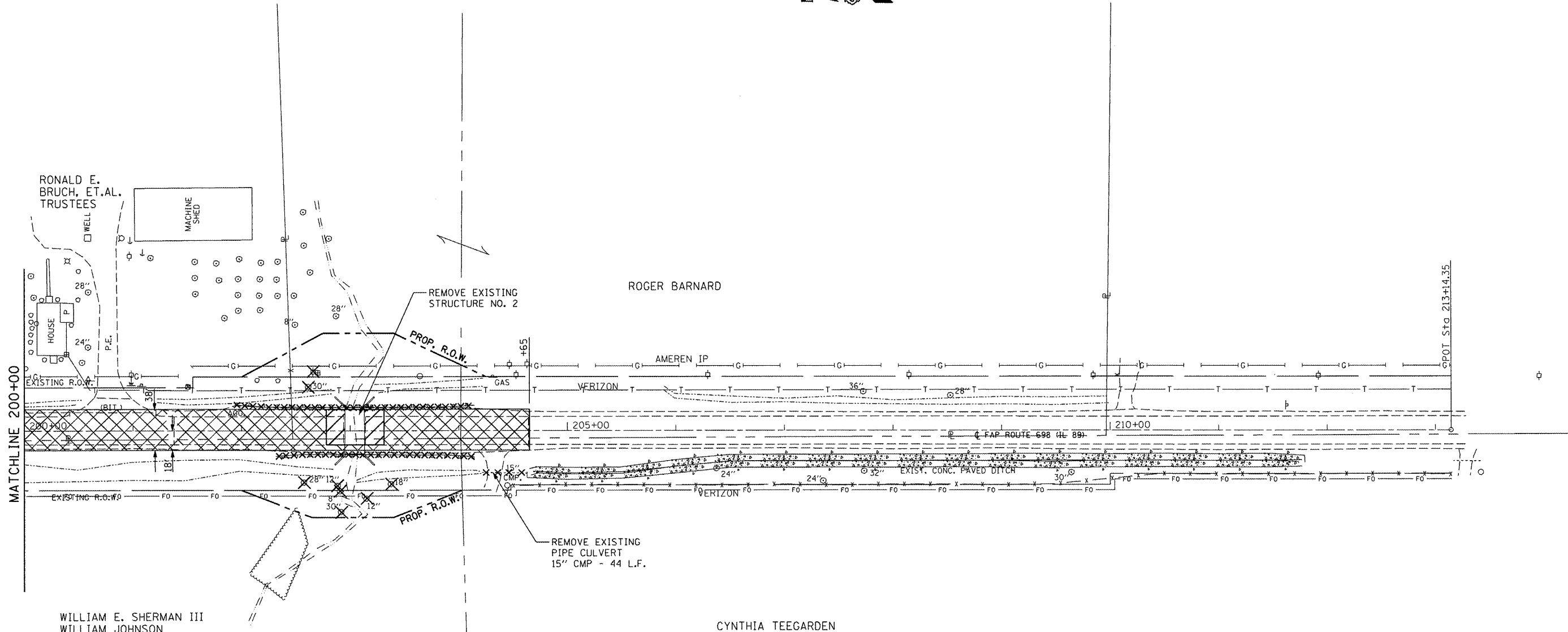
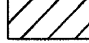


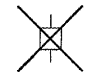
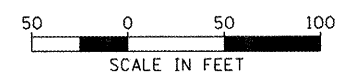


EXISTING GUARDRAIL TO BE REMOVED  
 LT. STA. 201+94 TO LT. STA. 204+14  
 RT. STA. 202+32 TO RT. STA. 204+14



- TREE REMOVAL**
- 47' RT., STA. 202+58 - 28"
  - 41' LT., STA. 202+61 - 30"
  - 51' RT., STA. 202+88 - 12"
  - 55' RT., STA. 202+91 - 8"
  - 75' RT., STA. 202+92 - 30"
  - 62' RT., STA. 203+15 - 12"
  - 49' RT., STA. 203+37 - 18"

-  PAVEMENT REMOVAL  
STA. 202+78 TO STA. 203+31
-  HOT-MIX ASPHALT SURFACE  
REMOVAL, (VARIABLE DEPTH)  
(BASED ON CROSS SECTIONS)
-  TREE REMOVAL
-  POWER POLE TO BE RELOCATED  
(BY OTHERS)



FILE NAME =  
 ...plans\0468571-sht-rem.dgn  
 Johnson, Depp & Quisenberry  
 CONSULTING ENGINEERS  
 Springfield, Illinois

USER NAME = *USER1	DESIGNED -	REVISED -
PLOT SCALE = 100.0000' / IN.	DRAWN -	REVISED -
PLOT DATE = 12/12/2011 08:13:37	CHECKED -	REVISED -
	DATE -	REVISED -

**STATE OF ILLINOIS  
 DEPARTMENT OF TRANSPORTATION**

REMOVAL PLANS				
SCALE:	SHEET NO.	OF	SHEETS	STA. TO STA.

F.A.P. RTE.	SECTION	COUNTY	TOTAL SHEETS	SHEET NO.
698	(2) BR-1 & BR-2	PUTNAM	71	18
CONTRACT NO. 68571				
[ILLINOIS] FED. AID PROJECT				