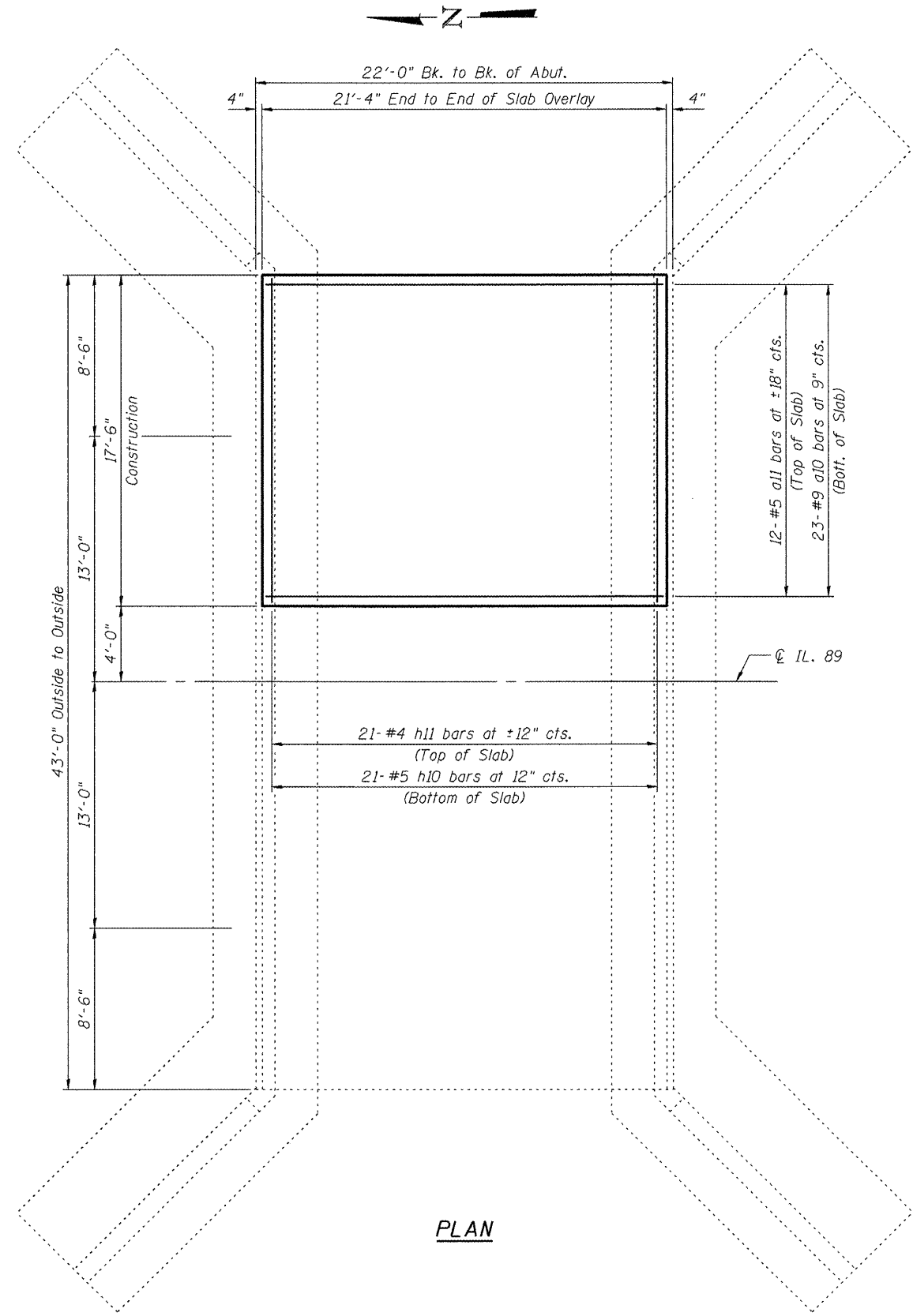
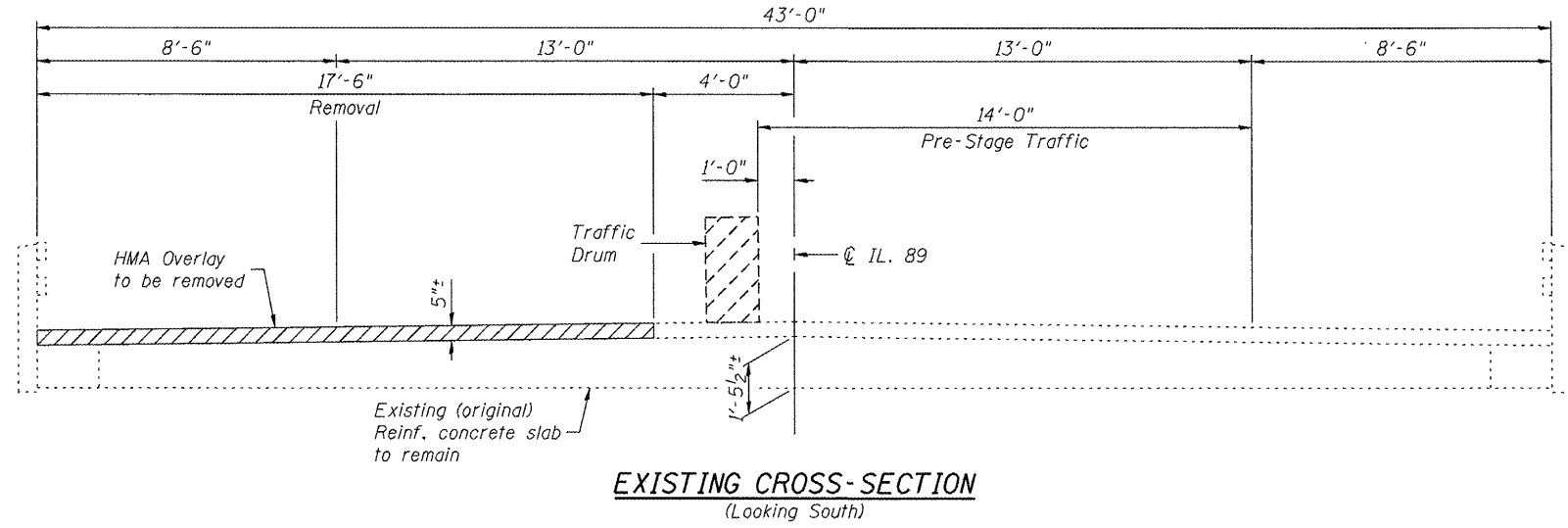


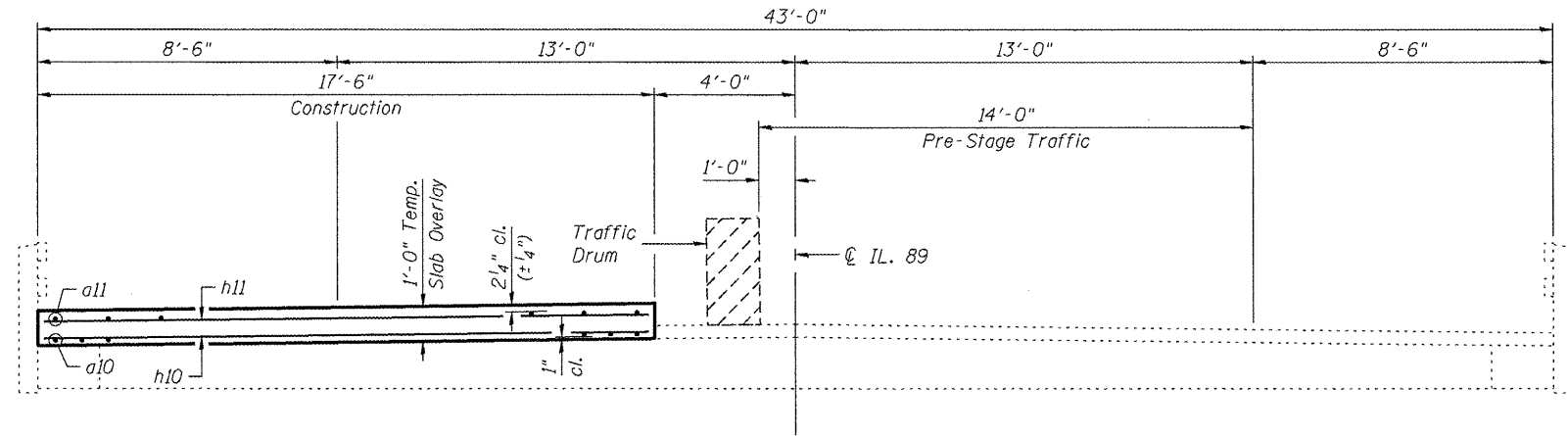
Notes:  
 Temporary slab overlay shall be installed prior to Stage 1.  
 Tilt a10 bars as required to maintain clearance.  
 The deck surface shall have its final finish tined according to Article 420.09(e)(1) of the Standard Specifications. Cost included with Concrete Superstructure.



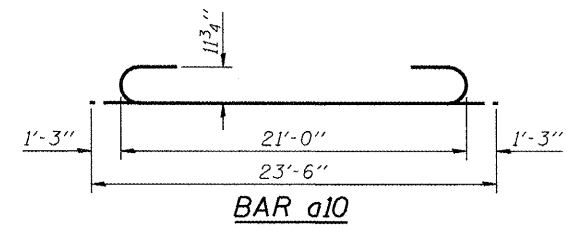
PLAN



EXISTING CROSS-SECTION  
 (Looking South)



PROPOSED CROSS-SECTION  
 (Looking South)



BILL OF MATERIAL

Bar	No.	Size	Length	Shape
a10	23	#9	23'-6"	
a11	12	#5	21'-0"	
h10	21	#5	17'-2"	
h11	21	#4	17'-2"	
HMA Surface Removal (Deck)				Sq. Yd. 42
Concrete Superstructure				Cu. Yd. 13.8
Reinforcement Bars				Pound 2720

FILE: J:\BDD\BDD206.L.BB.Airports.Creek.P12\1-rdcb-SN0782009\0782009-68571-003-tempslab.dgn  
 SAVE DATE: 12/09/2011

FILE NAME =	USER NAME = DCD	DESIGNED - DCD	REVISED -
... \0782009-68571-003-tempslab.dgn		CHECKED - LKS	REVISED -
Johnson, Depp & Ouisenberry CONSULTING ENGINEERS Springfield, Illinois	PLOT SCALE =	DRAWN - P. Roy	REVISED -
	PLOT DATE = 12/09/2011 4:20:25	CHECKED - DCD	REVISED -

**STATE OF ILLINOIS**  
**DEPARTMENT OF TRANSPORTATION**

**TEMPORARY SLAB OVERLAY**  
**STRUCTURE NO. 078-2009**  
 SHEET NO. 3 OF 8 SHEETS

F.A.P. RTE.	SECTION	COUNTY	TOTAL SHEETS	SHEET NO.
698	(2) BR-1 & BR-2	PUTNAM	71	34
STA. 196+22		CONTRACT NO.	68571	
ILLINOIS FED. AID PROJECT				