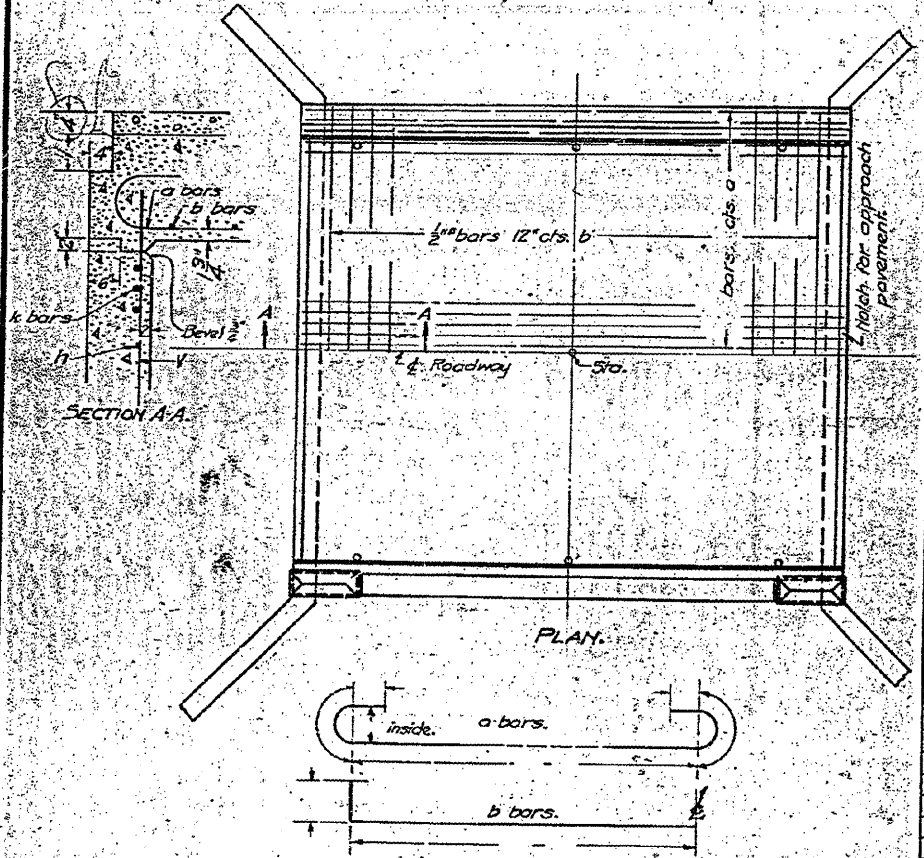
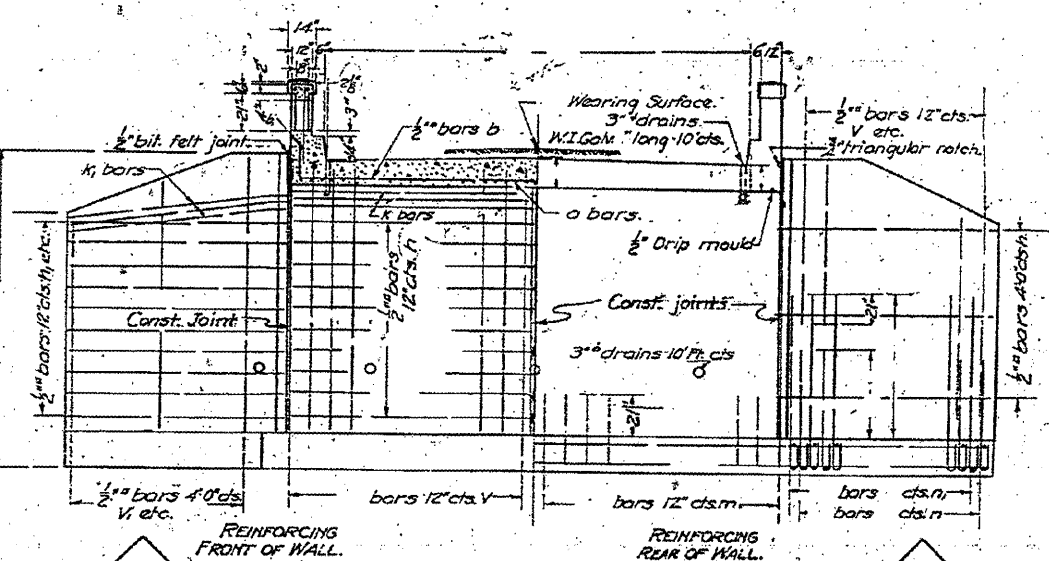
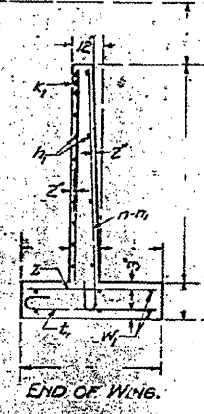
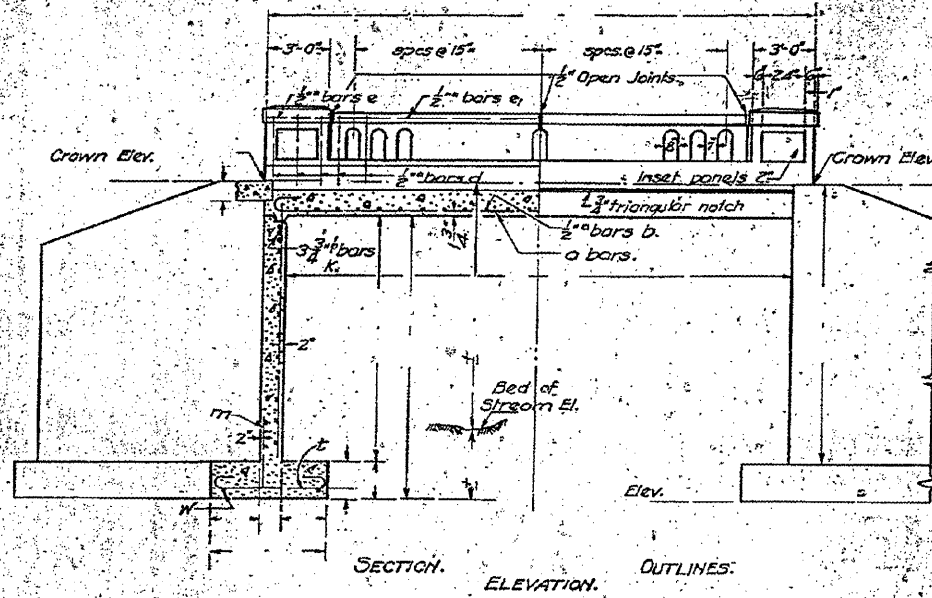


STATE OF ILLINOIS
DEPARTMENT OF PUBLIC WORKS & BUILDINGS
DIVISION OF HIGHWAYS

SHEET NO.
SHEETS



BILL OF MATERIALS.

SUPERSTRUCTURE

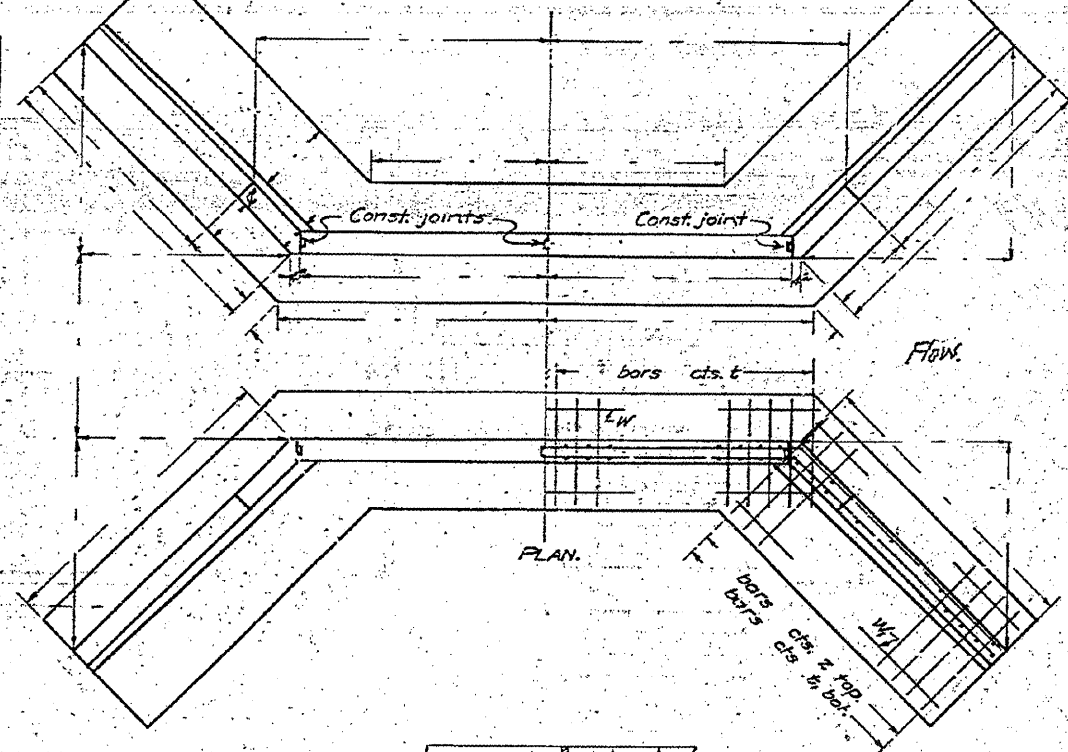
Bars	No.	Size	Length
a			
b		1/2"	
b ₁			
d		1/2"	3'-0"
e		1/2"	3'-0"
e ₁			

Reinforcing Steel - Lbs.
Class X Concrete - Cu. Yds.
Hand Rail Concrete - Cu. Yds.
Removal of Old Bridge
Floor Drains - Each

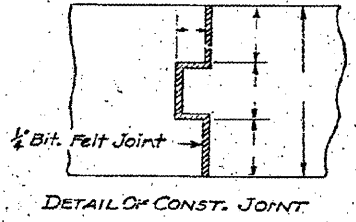
SUBSTRUCTURE

Bars	No.	Size	Length
v		1/2"	
v ₁			
v ₂			
v ₃			
v ₄			
v ₅			
v ₆			
v ₇			
v ₈			
v ₉			
v ₁₀			
v ₁₁			
v ₁₂			
v ₁₃			
v ₁₄			
v ₁₅			
v ₁₆			
v ₁₇			
v ₁₈			
v ₁₉			
v ₂₀			
v ₂₁			
v ₂₂			
v ₂₃			
v ₂₄			
v ₂₅			
v ₂₆			
v ₂₇			
v ₂₈			
v ₂₉			
v ₃₀			
v ₃₁			
v ₃₂			
v ₃₃			
v ₃₄			
v ₃₅			
v ₃₆			
v ₃₇			
v ₃₈			
v ₃₉			
v ₄₀			
v ₄₁			
v ₄₂			
v ₄₃			
v ₄₄			
v ₄₅			
v ₄₆			
v ₄₇			
v ₄₈			
v ₄₉			
v ₅₀			
v ₅₁			
v ₅₂			
v ₅₃			
v ₅₄			
v ₅₅			
v ₅₆			
v ₅₇			
v ₅₈			
v ₅₉			
v ₆₀			
v ₆₁			
v ₆₂			
v ₆₃			
v ₆₄			
v ₆₅			
v ₆₆			
v ₆₇			
v ₆₈			
v ₆₉			
v ₇₀			
v ₇₁			
v ₇₂			
v ₇₃			
v ₇₄			
v ₇₅			
v ₇₆			
v ₇₇			
v ₇₈			
v ₇₉			
v ₈₀			
v ₈₁			
v ₈₂			
v ₈₃			
v ₈₄			
v ₈₅			
v ₈₆			
v ₈₇			
v ₈₈			
v ₈₉			
v ₉₀			
v ₉₁			
v ₉₂			
v ₉₃			
v ₉₄			
v ₉₅			
v ₉₆			
v ₉₇			
v ₉₈			
v ₉₉			
v ₁₀₀			

Reinforcing Steel - Lbs.
Class X Concrete - Cu. Yds.
Unfr. Piles Up to 20' Lin. R.
Test Piles



Use Class X concrete throughout.
Reinforcing steel shall be wired
securely in place before concrete
is poured.



STANDARD	COMPUTED	EXAMINED
	CHECKED	
	DRAWN	
	CHECKED	
SPECIAL	ASSEMBLED	APPROVED
	CHECKED	

DESIGNED	REVISOR
DRAWN	REVISOR
CHECKED	REVISOR
DATE	REVISOR

STATE OF ILLINOIS
DEPARTMENT OF TRANSPORTATION

EXISTING STRUCTURE PLANS EXCERPTS (FOR INFORMATION ONLY)

SCALE: SHEET NO. 4 OF 10 SHEETS STA. TO STA.

F.A.P. RTE.	SECTION	COUNTY	TOTAL SHEETS	SHEET NO.
698	(2) BR-1 & BR-2	PUTNAM	71	51
FED. ROAD DIST. NO.		ILLINOIS FED. AID PROJECT		