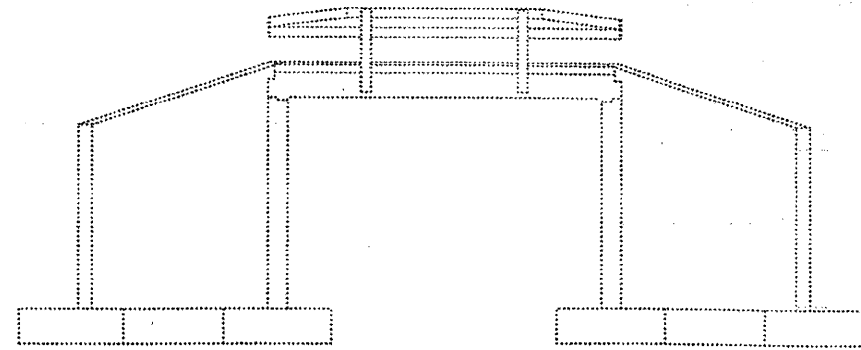
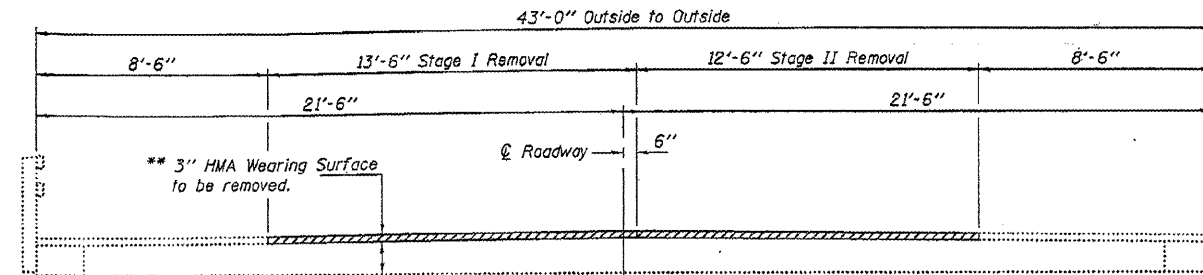


GENERAL NOTES

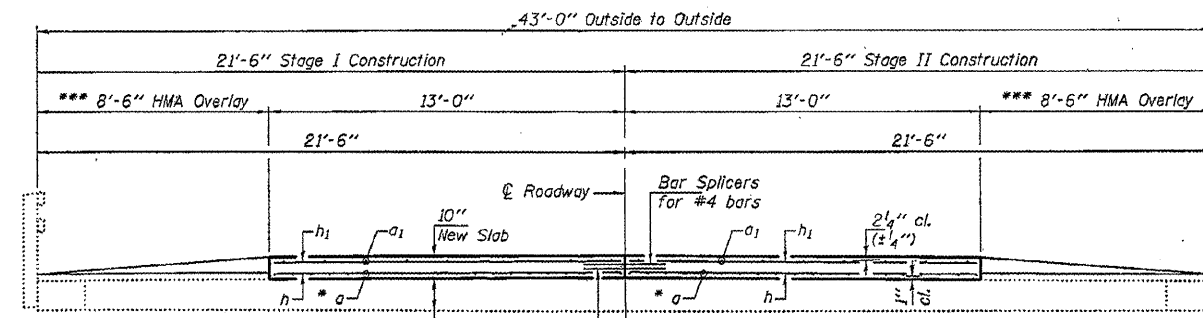
Plan dimensions and details relative to existing plans are subject to nominal construction variations. The Contractor shall field verify existing dimensions and details affecting new construction and make necessary approved adjustments prior to construction or ordering of materials. Such variations shall not be cause for additional compensation for a change in scope of the work, however, the Contractor will be paid for the quantity actually furnished at the unit price bid for the work. Reinforcement bars shall conform to the requirements of ASTM A 706 Gr 60. See Special Provisions. The deck surface shall have its final finish tined according to Article 420.09(e)(1) of the Standard Specifications. Cost included with Concrete Superstructures.



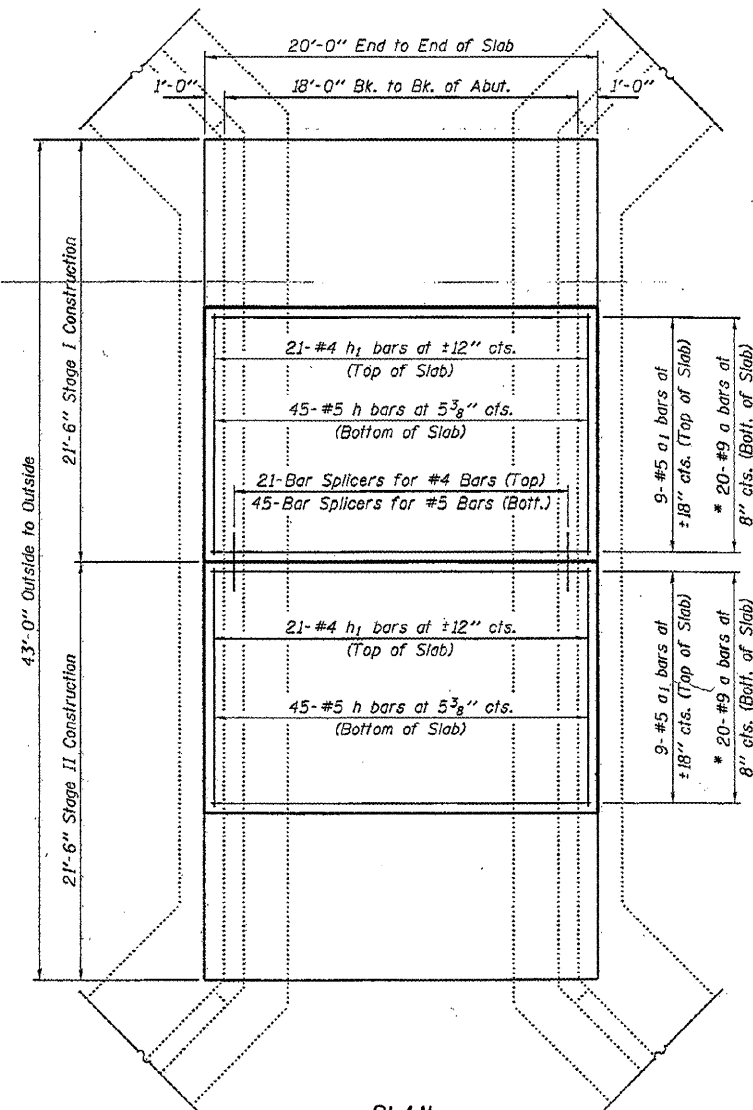
ELEVATION



EXISTING CROSS-SECTION
(Looking South)



PROPOSED CROSS-SECTION
(Looking South)

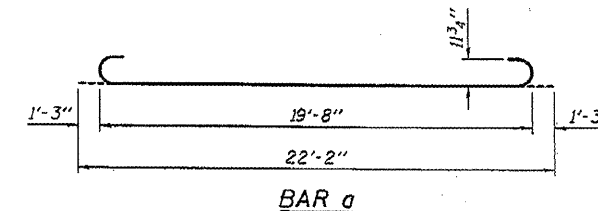


PLAN

- * Till #9 a bars as required to maintain clearance.
- ** Contractor must not remove any material beyond this limit.
- *** 7" New HMA Overlay. Match to top of new 10" Slab and taper to railing.

BILL OF MATERIAL

Bar	No.	Size	Length	Shape
a	40	#9	22'-2"	—
a1	18	#5	19'-8"	—
h	90	#5	12'-8"	—
h1	42	#4	12'-8"	—
HMA Surface Removal			Sq. Yd.	57.8
HMA Surface Course Mix "D" NSO			Tons	7.4
Concrete Superstructure			Cu. Yd.	16.0
Reinforcement Bars			Pound	4930
Bar Splicers			Each	66



BAR a

Expires: November 30, 2012

DESIGNED -	EXAMINED -	DATE -	OCTOBER 14, 2010
CHECKED -	ENGINEER OF STRUCTURAL SERVICES		
DRAWN - Kyle M. Steffen	PASSED		
CHECKED -	ENGINEER OF BRIDGES AND STRUCTURES		

STATE OF ILLINOIS
DEPARTMENT OF TRANSPORTATION

GENERAL PLAN, ELEVATION & REPAIR DETAILS
SN 078-0029

F.A.P. RTE.	SECTION	COUNTY	TOTAL SHEETS	SHEET NO.
-	-	PUTNAM	-	-
CONTRACT NO.				
ILLINOIS FED. AID PROJECT				

SHEET NO. 1 OF 2 SHEETS

0780029.dgn 14-Oct-10 08:11:35