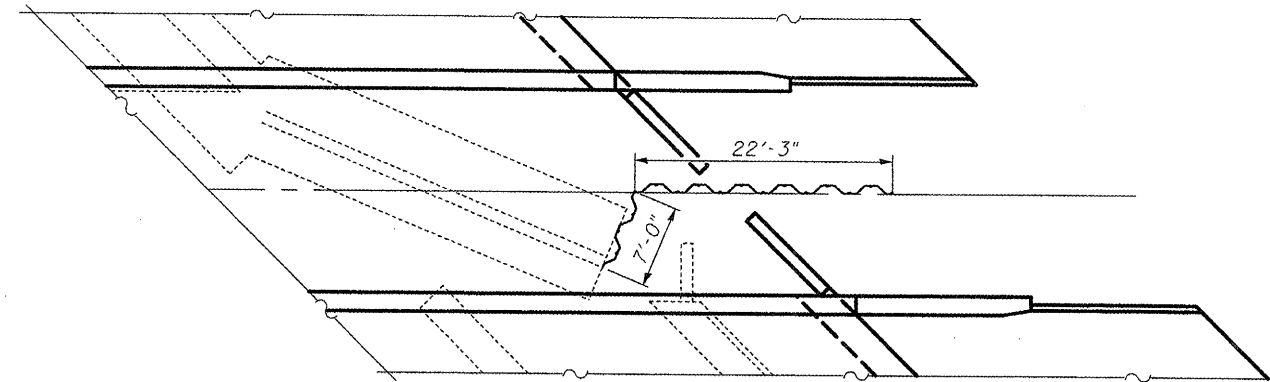
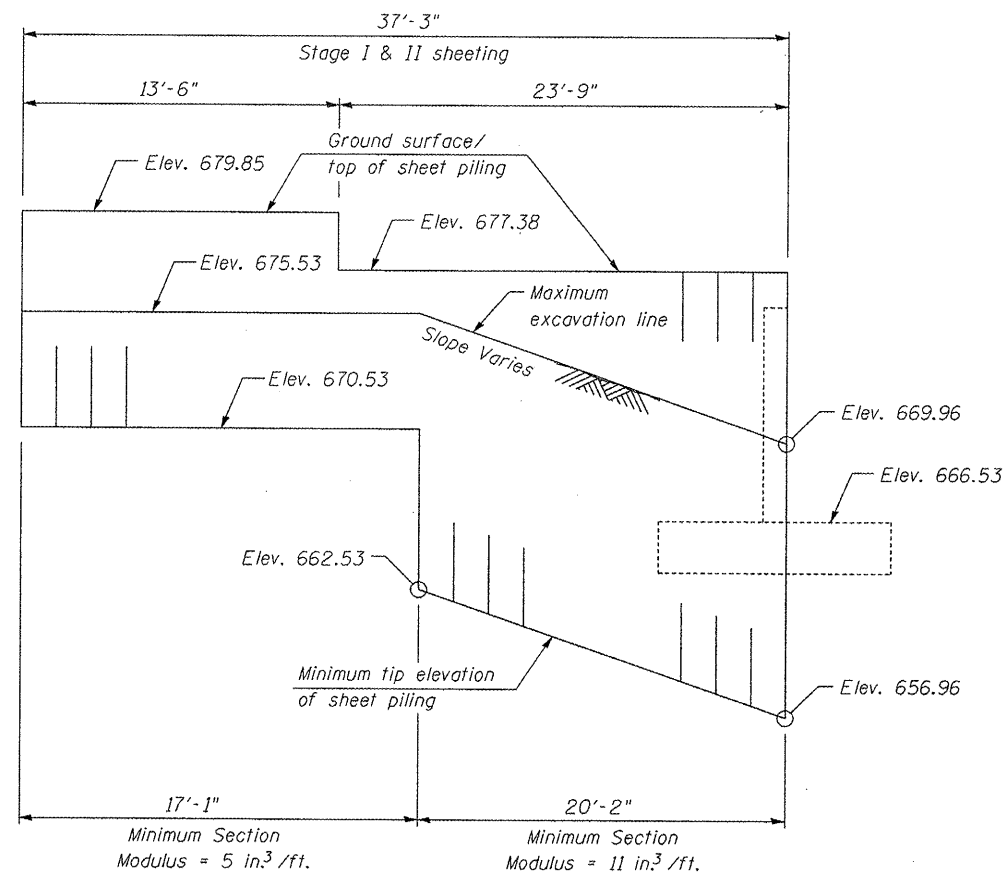


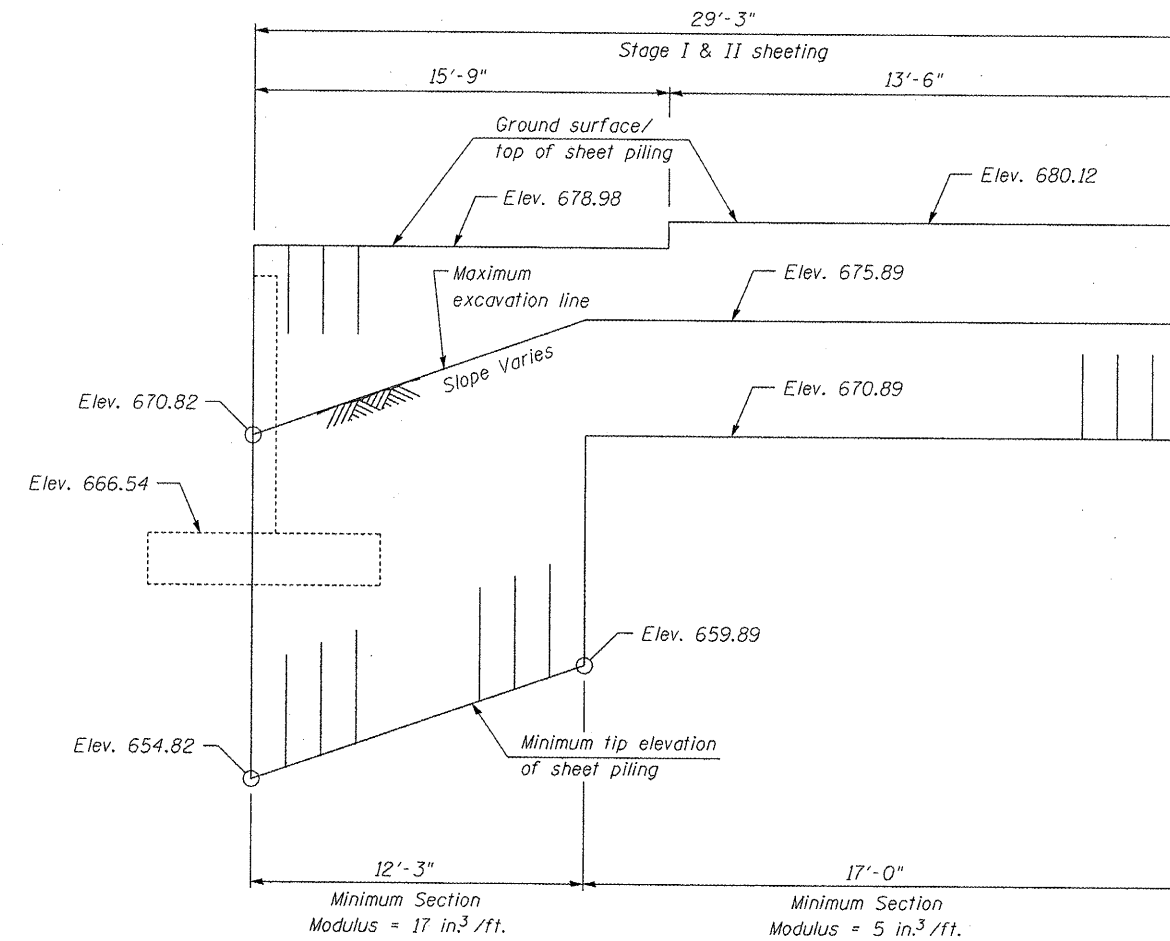
PLAN - N. ABUT.



PLAN - S. ABUT.



TEMPORARY SHEET PILING - N. ABUT.  
(Looking East)



TEMPORARY SHEET PILING - S. ABUT.  
(Looking East)

If the Contractor chooses to alter the temporary cantilevered sheet piling design requirements shown on the plans, a design submittal including plan details and calculations will be required for review and acceptance by the Engineer.

FILE NAME =	USER NAME = seb	DESIGNED - KTH	REVISED -
P:\07files\070206\Phase2\Bridg Plans\03.TempSheetPiling.dgn		CHECKED - ADL	REVISED -
		DRAWN - BGJ	REVISED -
		CHECKED - RJP	REVISED -

STATE OF ILLINOIS  
DEPARTMENT OF TRANSPORTATION

TEMPORARY SHEET PILING  
S.N. 055-0080 (NB) & S.N. 055-0081 (SB)

F.A.P. RTE.	SECTION	COUNTY	TOTAL SHEETS	SHEET NO.
310	(38B-2)BR	MCDONOUGH	130	60
CONTRACT NO. 68691				

SHEET NO. 3 OF 35 SHEETS

ILLINOIS FED. AID PROJECT  
Klinaner & Associates P.C.