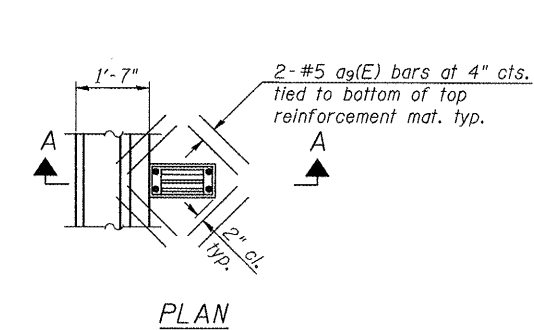
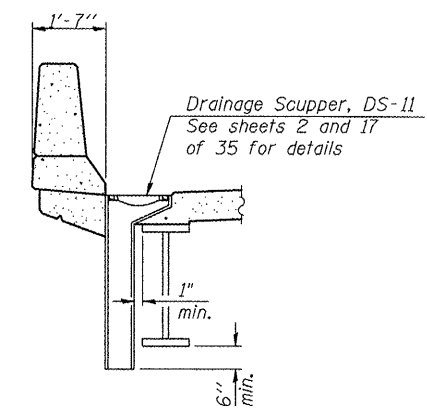


INSIDE ELEVATION OF PARAPET

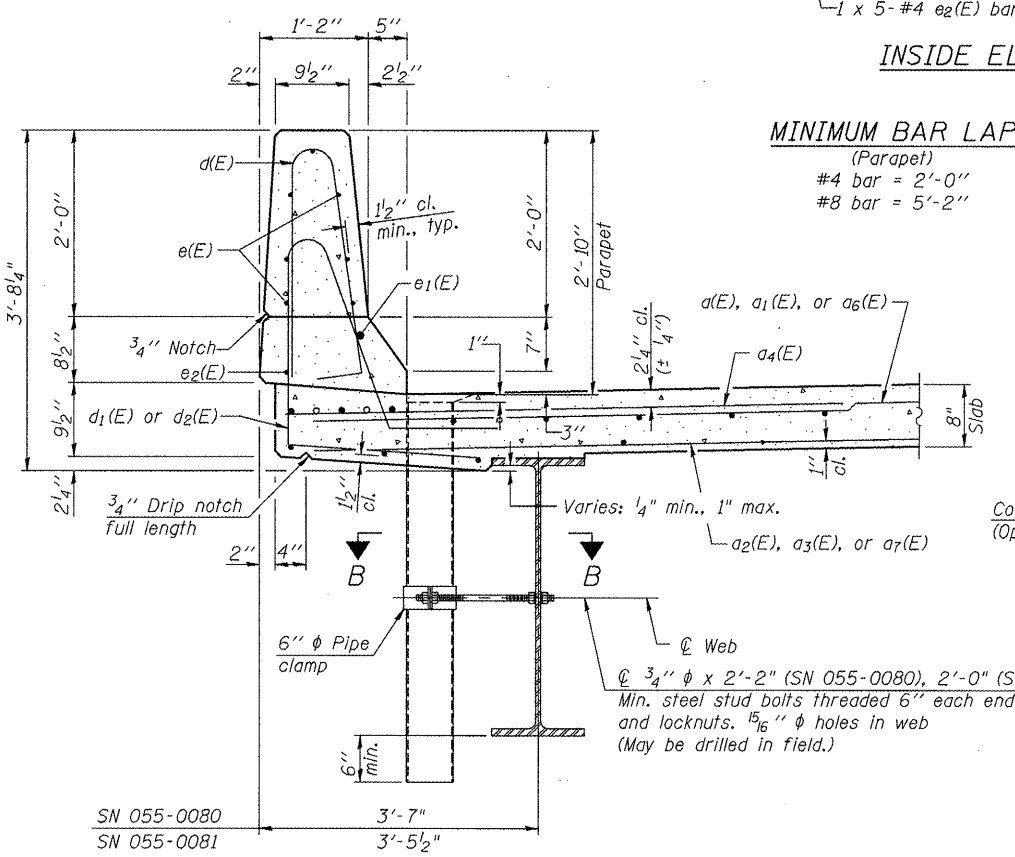


PLAN

Note:
Cut longitudinal reinforcement to clear drainage scuppers.

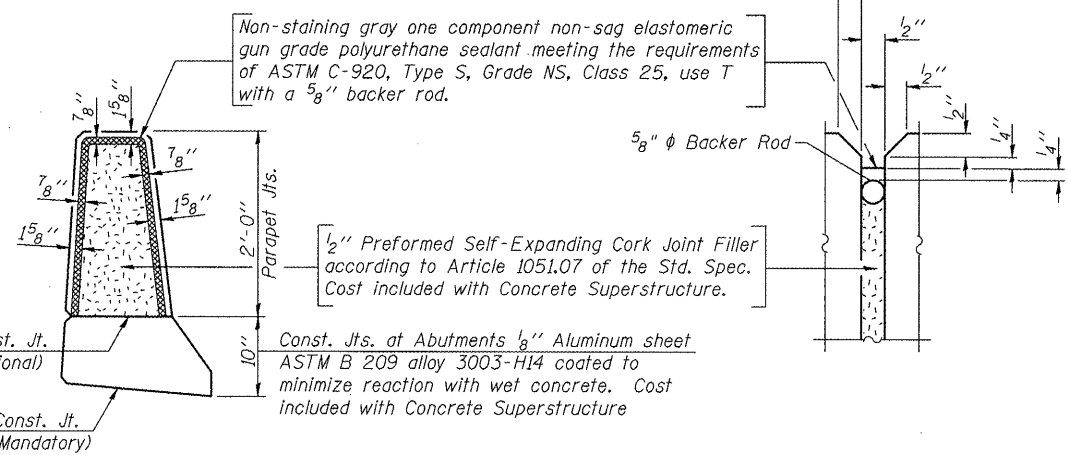


SECTION A-A



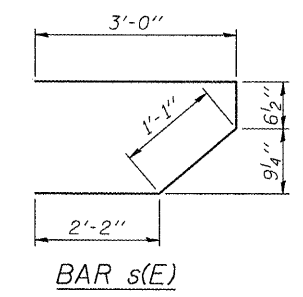
SECTION THRU PARAPET

MINIMUM BAR LAP
(Parapet)
#4 bar = 2'-0"
#8 bar = 5'-2"

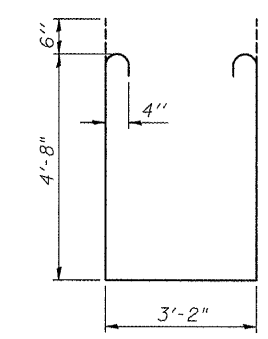


PARAPET JOINT DETAILS

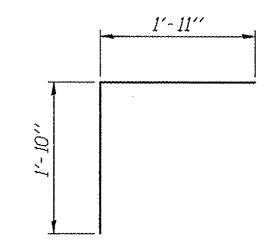
Notes:
The Floor Drains need not be painted.
Drains shall be located clear of all diaphragms.
Fiberglass pipe shall conform to ASTM D 2996, with short-time rupture strength hoop tensile stress of 30,000 p.s.i. minimum.
Galvanize clamping device according to AASHTO M232. Cost of clamping device and inserts is included with Floor Drains.



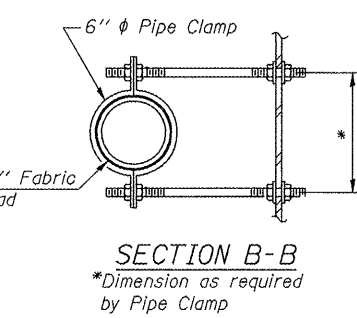
BAR s(E)



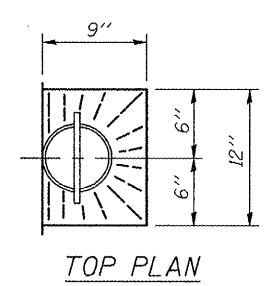
BAR s1(E)



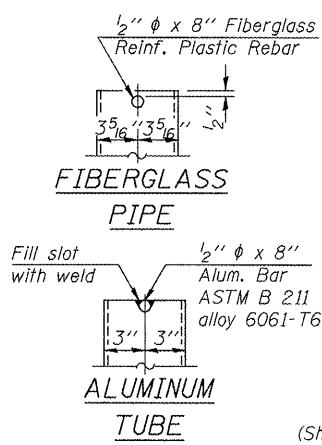
BAR v(E)



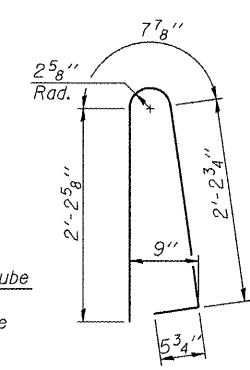
SECTION B-B
*Dimension as required by Pipe Clamp



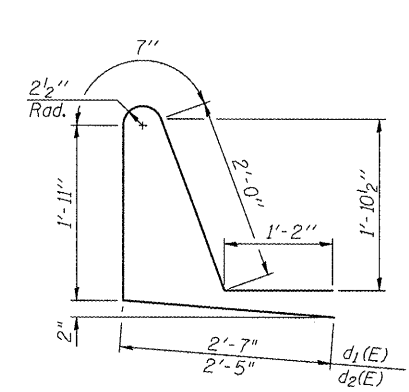
TOP PLAN



TOP PLAN
(Showing Aluminum Tube)



BAR d(E)



BAR d1(E) & d2(E)

SUPERSTRUCTURE BILL OF MATERIAL - 2 BRIDGES

Bar	No.	Size	Length	Shape
d(E)	257	#5	31'-9"	—
a1(E)	257	#5	24'-1"	—
a2(E)	157	#5	23'-10"	—
a3(E)	157	#5	31'-6"	—
a4(E)	1,024	#6	6'-6"	—
a5(E)	8	#6	39'-2"	—
a6(E)	258	#5	42'-7"	—
a7(E)	157	#5	42'-1"	—
a8(E)	8	#6	32'-1"	—
a9(E)	16	#5	1'-6"	—
b(E)	408	#5	32'-1"	—
b1(E)	420	#5	26'-4"	—
d(E)	520	#5	5'-7"	—
d1(E)	260	#5	8'-3"	—
d2(E)	260	#5	8'-1"	—
e(E)	168	#4	19'-6"	—
e1(E)	16	#8	33'-6"	—
e2(E)	20	#4	25'-4"	—
m(E)	20	#6	39'-2"	—
m1(E)	28	#6	13'-7"	—
m2(E)	12	#6	8'-7"	—
m3(E)	4	#6	3'-9"	—
m4(E)	20	#6	32'-1"	—
m5(E)	24	#6	12'-11"	—
m6(E)	10	#6	8'-0"	—
m7(E)	4	#6	3'-7"	—
s(E)	200	#5	6'-10"	—
s1(E)	178	#4	13'-6"	—
v(E)	196	#5	3'-9"	—
Reinforcement Bars, Epoxy Coated		Pound		97,160
Concrete Superstructure		Cu. Yds.		486.1
Floor Drains		Each		22
Bar Splicers		Each		204

Bars indicated thus 1 x 4-#8 etc. indicates 1 line of bars with 4 lengths per line.

S-I-D

7-1-10

FILE NAME = P:\07files\070206\Phase2\Bridges\Plans\14_SuperStructure_Details.dgn	USER NAME = seb	DESIGNED - KTH	REVISED - 12/13/2011
		CHECKED - ADL	REVISED -
	PLOT SCALE = 0:2.0000 ' = 1" IN.	DRAWN - BGJ	REVISED -
	PLOT DATE = 12/13/2011	CHECKED - RJP	REVISED -

STATE OF ILLINOIS
DEPARTMENT OF TRANSPORTATION

SUPERSTRUCTURE DETAILS
S.N. 055-0080 (NB) & S.N. 055-0081 (SB)

F.A.P. RTE.	SECTION	COUNTY	TOTAL SHEETS	SHEET NO.
310	(388-2)BR	MCDONOUGH	130	71
				CONTRACT NO. 68691
ILLINOIS FED. AID PROJECT Klingner & Associates P.C.				

SHEET NO. 14 OF 35 SHEETS