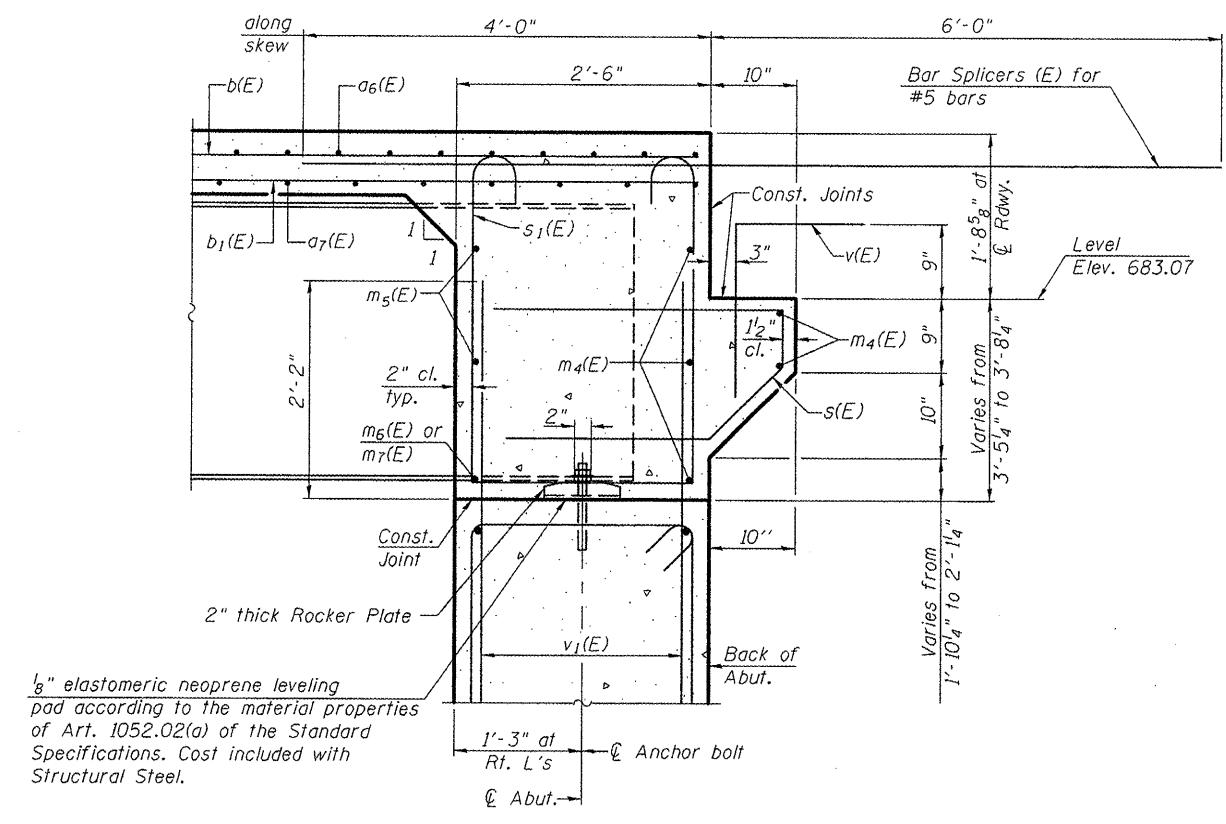


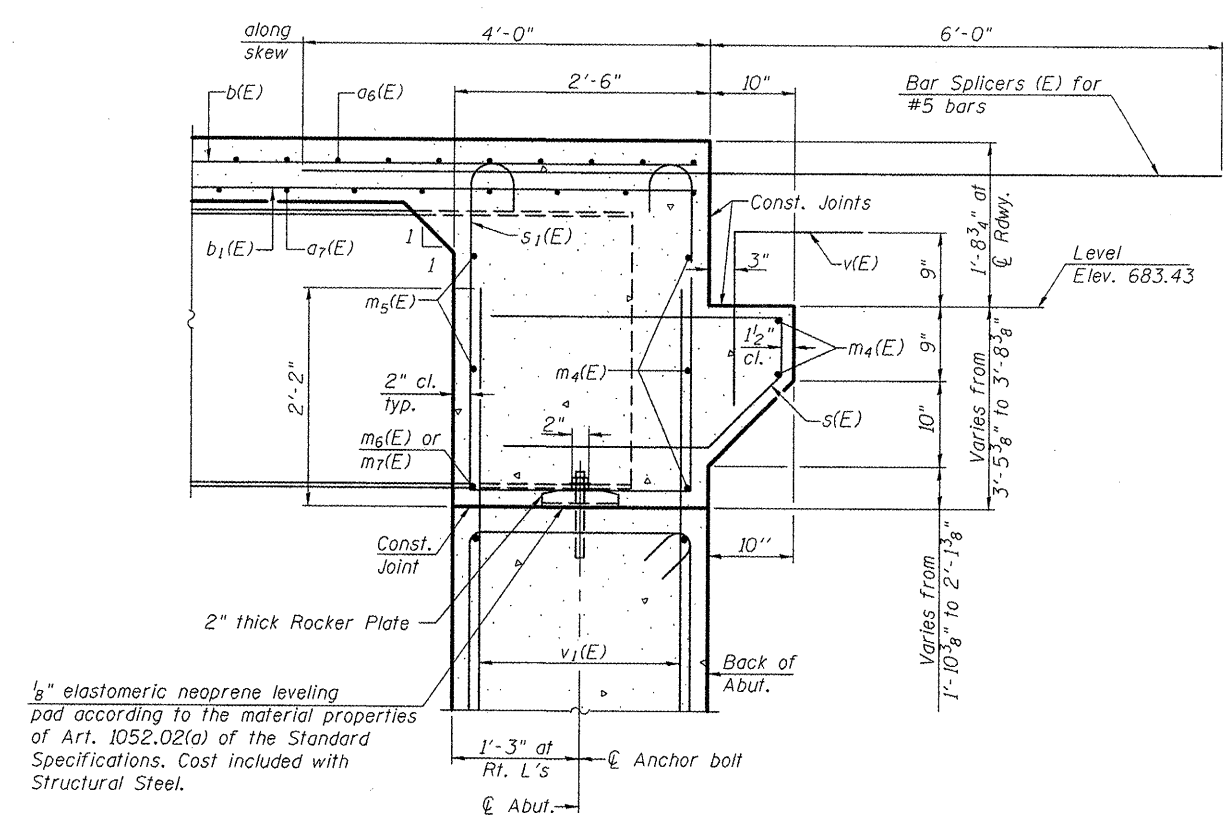
Notes:
 Reinforcement bars in diaphragm are billed with superstructure on sheet 14 of 35.
 Concrete in diaphragm is included with Concrete Superstructure on sheet 13 of 35.
 For details of bars s(E) & s₁(E) see sheet 14 of 35.
 The s(E) and s₁(E) bars shall be placed parallel to the beams. Spacing for these bars shall be at right angles to the beams.
 For location of holes thru web, see sheet 23 of 35.

MIN. BAR LAP
 #6 bar = 3'-4"

DIAPHRAGM ELEVATION AT ABUTMENT



SECTION A-A @ NORTH ABUT.
 Dimensions at right angles to abutment, except as shown.



SECTION A-A @ SOUTH ABUT.
 Dimensions at right angles to abutment, except as shown.

FILE NAME *	USER NAME = srb	DESIGNED - KTH	REVISED -	STATE OF ILLINOIS DEPARTMENT OF TRANSPORTATION	DIAPHRAGM DETAILS S.N. 055-0081 (SB)	F.A.P. RTE.	SECTION	COUNTY	TOTAL SHEETS	SHEET NO.
P:\07files\070205\Phase2\Bridg P\ans\16_DiaphragmDetails_0081.dgn		CHECKED - ADL	REVISED -			310	(38B-2)BR	MCDONOUGH	130	73
PLOT SCALE = 0:2.0000 1' = 1/4\"		DRAWN - BGJ	REVISED -			CONTRACT NO. 68691				
PLOT DATE = 12/7/2011		CHECKED - RJP	REVISED -			SHEET NO. 16 OF 35 SHEETS				

ILLINOIS FED. AID PROJECT
 Klinaner & Associates P.C.