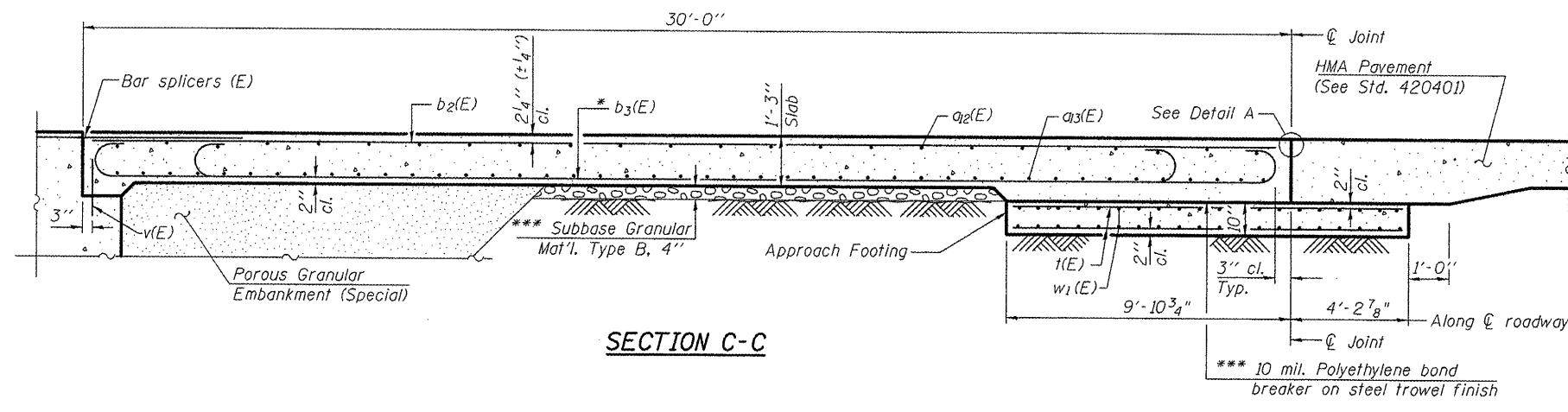
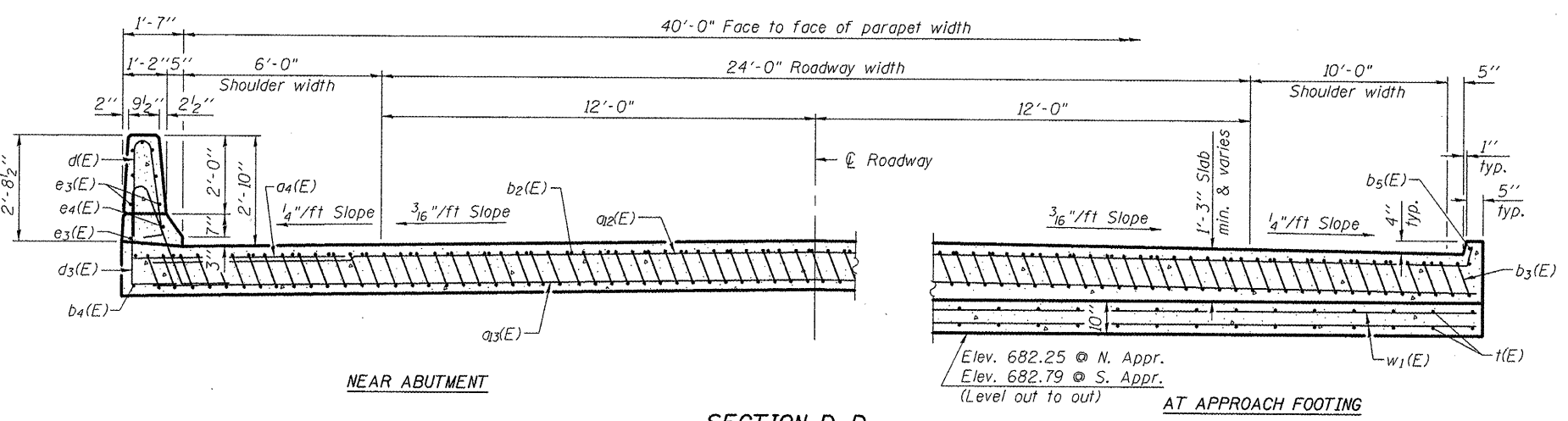


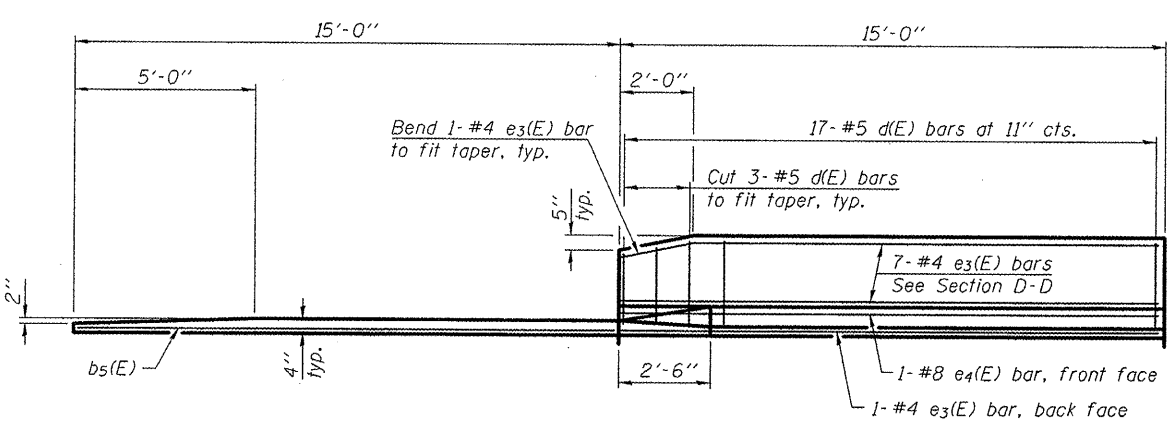
Notes:
 See sheet 20 of 35 for Detail A and View B-B.
 Approach slab and parapet concrete shall be paid for as Concrete Superstructure.
 Approach footing concrete shall be paid for as Concrete Structures.
 Reinforcement shall be paid for as Reinforcement Bars. Epoxy Coated.
 For v(E) bar details, see sheet 14 of 35.
 The approach footing maximum applied service bearing pressure (Qmax) = 2.0 ksf.
 For bar splicer details, see sheet 30 of 35.
 Cost of excavation for approach footing included with Concrete Structures.
 For Porous Granular Embankment (Special) and drainage treatment details, see sheet 2 of 35.
 For additional parapet details, see sheet 14 of 35.



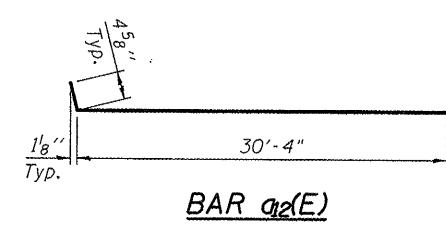
SECTION C-C



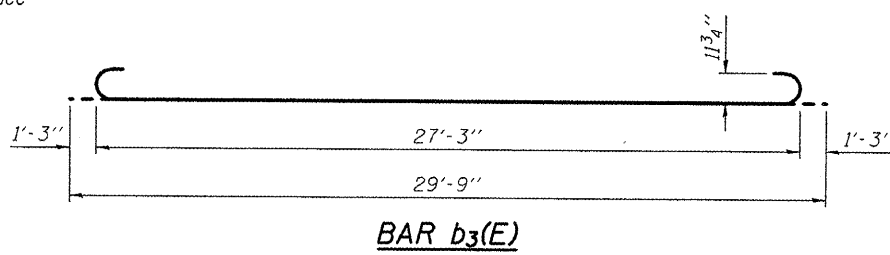
SECTION D-D
 (See Plan for dimensions not shown)



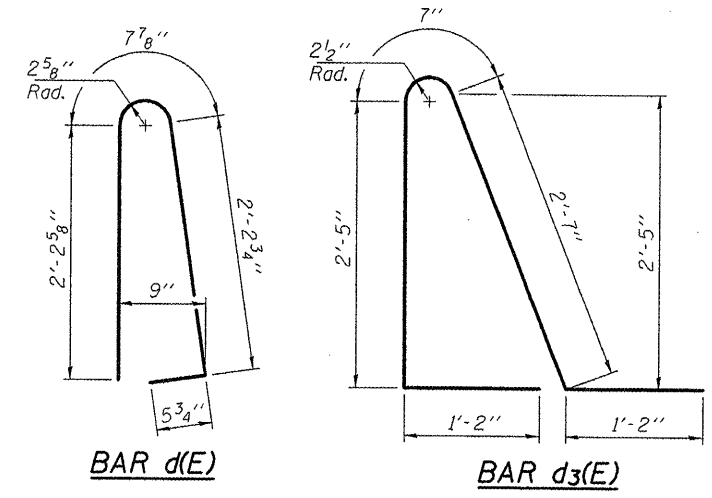
VIEW E-E



BAR a2(E)



BAR b3(E)



BAR d(E)

BAR d3(E)

* Tilt #9 b3(E) bars as required to maintain clearance.
 *** Cost included with Concrete Superstructure.

TWO APPROACHES
 BILL OF MATERIAL

Bar	No.	Size	Length	Shape
a4(E)	48	#6	6'-6"	—
a2(E)	100	#4	30'-9"	—
a3(E)	184	#5	31'-1"	—
b2(E)	66	#4	29'-8"	—
b3(E)	190	#9	29'-9"	—
b4(E)	4	#4	14'-8"	—
b5(E)	4	#4	14'-2"	—
d(E)	68	#5	5'-7"	Λ
d3(E)	68	#5	7'-11"	Λ
e3(E)	32	#4	14'-8"	—
e4(E)	4	#8	14'-8"	—
t(E)	172	#4	13'-11"	—
w1(E)	160	#5	31'-1"	—
Concrete Superstructure	Cu. Yd.		132.9	
Concrete Structures	Cu. Yd.		36.5	
Reinforcement Bars, Epoxy Coated	Pound		37,310	

(Sheet 2 of 2)