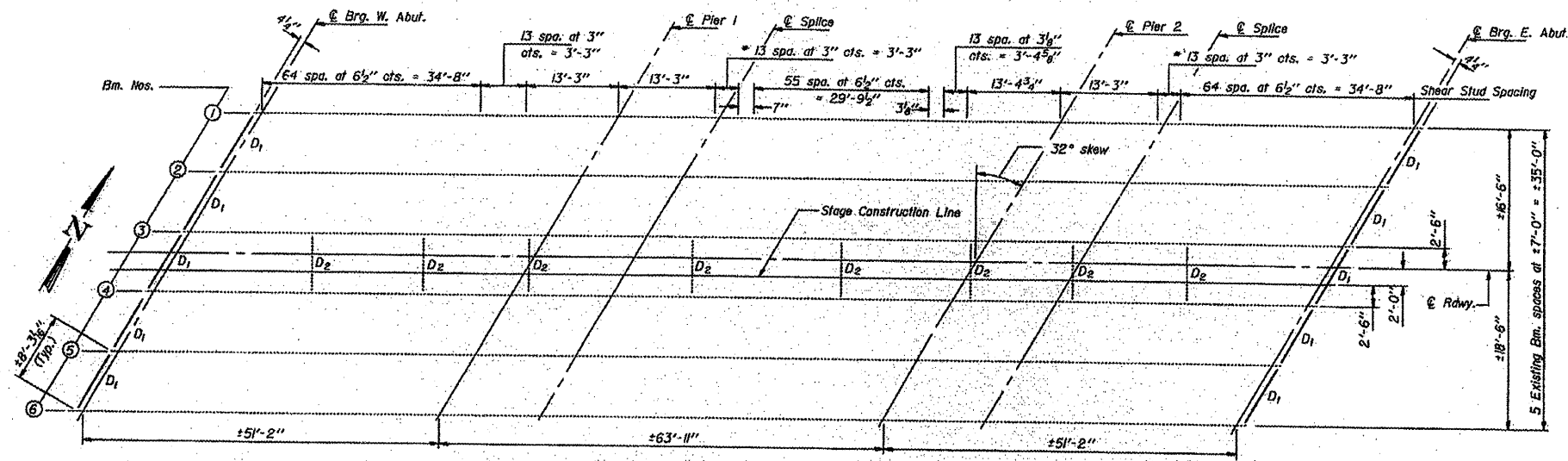
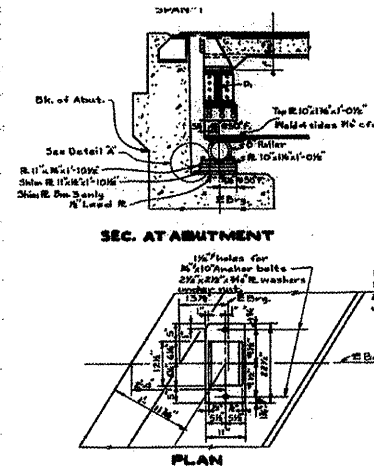
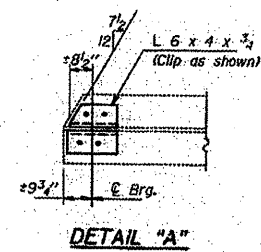
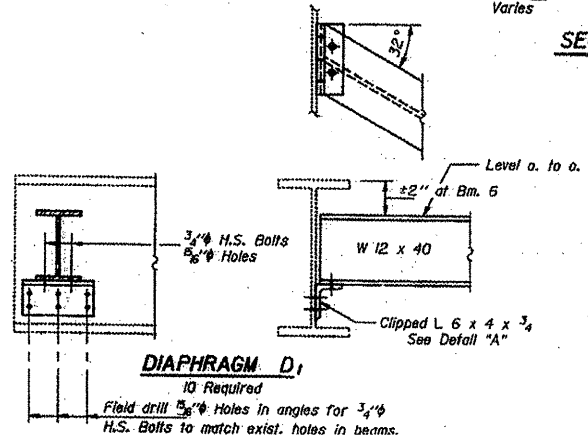
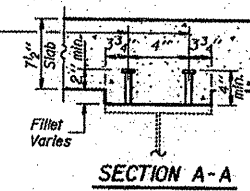


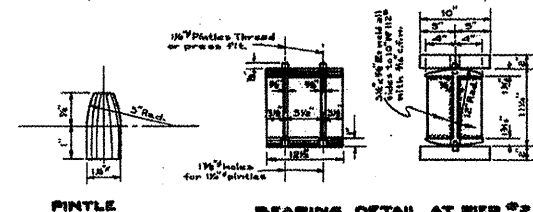
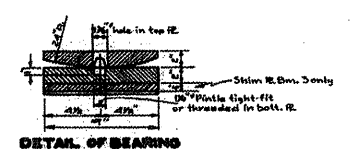
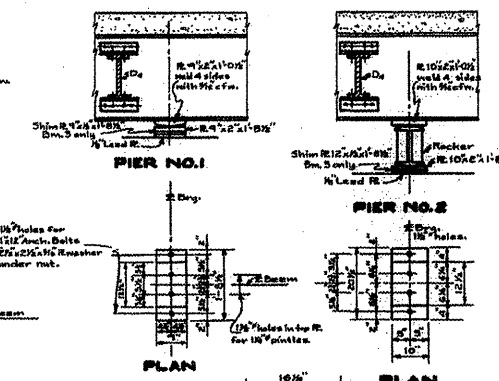
Location 3 S.N. 102-0007 Information Only



3/4" Granular or solid flux filled headed studs conforming to the requirements of Art. 710.38 of the Standard Specifications automatically end welded to flange. (No. Req. = 2880)



PLAN OF STRUCTURAL STEEL



EXISTING BEAMS ARE W33x141

FILE NAME - 68A62 Metalizing	USER NAME - Adeola	DESIGNED -	REVISED -
		DRAWN -	REVISED -
		CHECKED -	REVISED -
		DATE -	REVISED -

STATE OF ILLINOIS
DEPARTMENT OF TRANSPORTATION

SCALE: _____	SHEET _____	OF _____	SHEETS	STA. _____	TO STA. _____
--------------	-------------	----------	--------	------------	---------------

F.A. RTE.	SECTION	COUNTY	TOTAL SHEETS	SHEET NO.
Var	D4 Metalizing 2012	Marshall-woodford	21	13
CONTRACT NO. 68A62				
ILLINOIS FED. AID PROJECT				