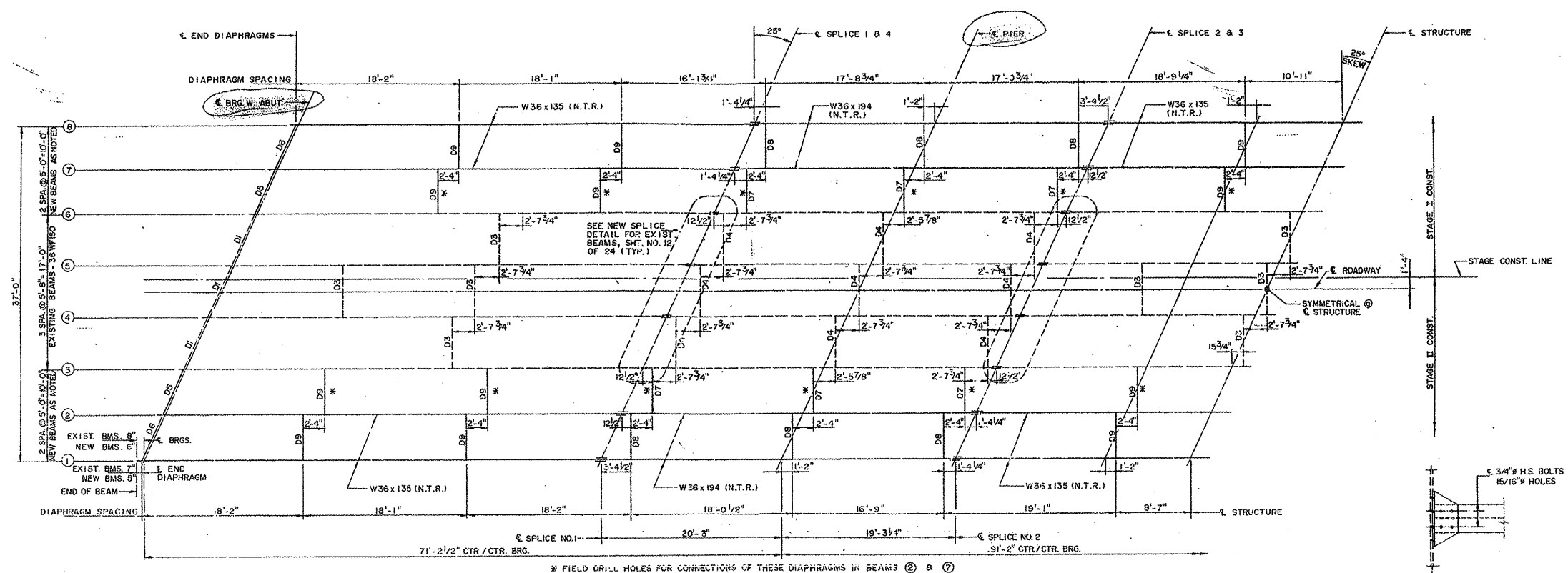
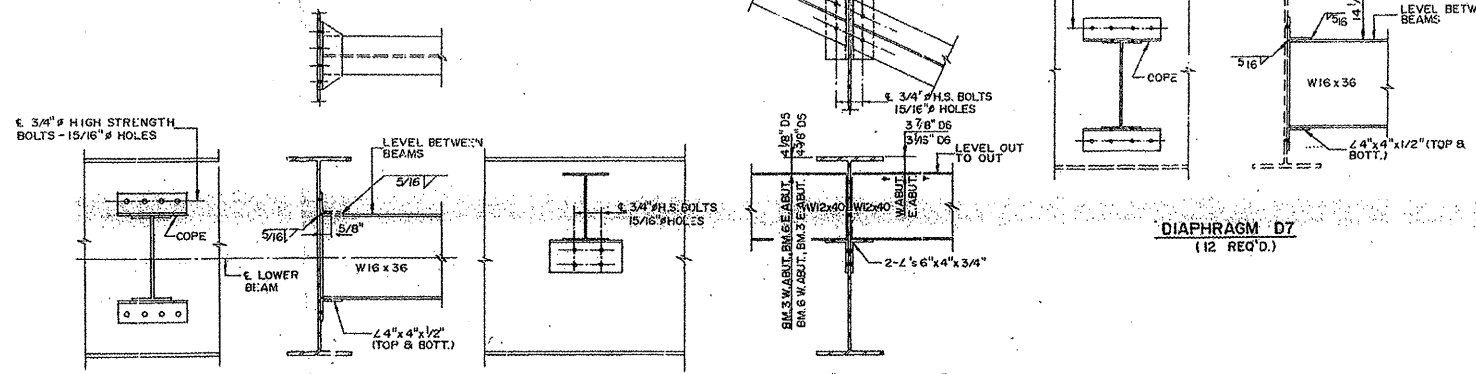


# Location 6      S.N. 102-0008 Information Only



### HAIR FRAMING PLAN (N.T.R. DENOTES NOTCH TOUGHNESS REQUIREMENTS)



**DIAPHRAGM D9 & D8**  
(24 REQ'D. - D9)  
(12 REQ'D. - D8)

**DIAPHRAGM D5 & D6**  
(8 REQ'D.)

**DIAPHRAGM D7**  
(12 REQ'D.)

ALSO SEE "SECTION AT ABUT.", SHIT. 7

FILE NAME 68A62 Metalizing.dwg	USER NAME AdeolaSA	DESIGNED ---	REVISED ---
		DRAWN ---	REVISED ---
		CHECKED ---	REVISED ---
		DATE 12/24/2011	REVISED ---

**STATE OF ILLINOIS  
DEPARTMENT OF TRANSPORTATION**

SCALE: _____	SHEET _____	OF _____	SHEETS	STA. _____	TO STA. _____
--------------	-------------	----------	--------	------------	---------------

F.A. RTE. Var	SECTION D4 Metalizing 2012	COUNTY Marshall-woodford	TOTAL SHEETS 21	SHEET NO. 20
CONTRACT NO. 68A62			ILLINOIS FED. AID PROJECT	