

F.A.P. RTE.:	SECTION	COUNTY	TOTAL SHEETS	SHEET NO.
808	94BR-1	CHAMPAIGN	50	1
		ILLINOIS	CONTRACT NO. 70582	

FOR INDEX OF SHEETS  
SEE SHEET NO. 2

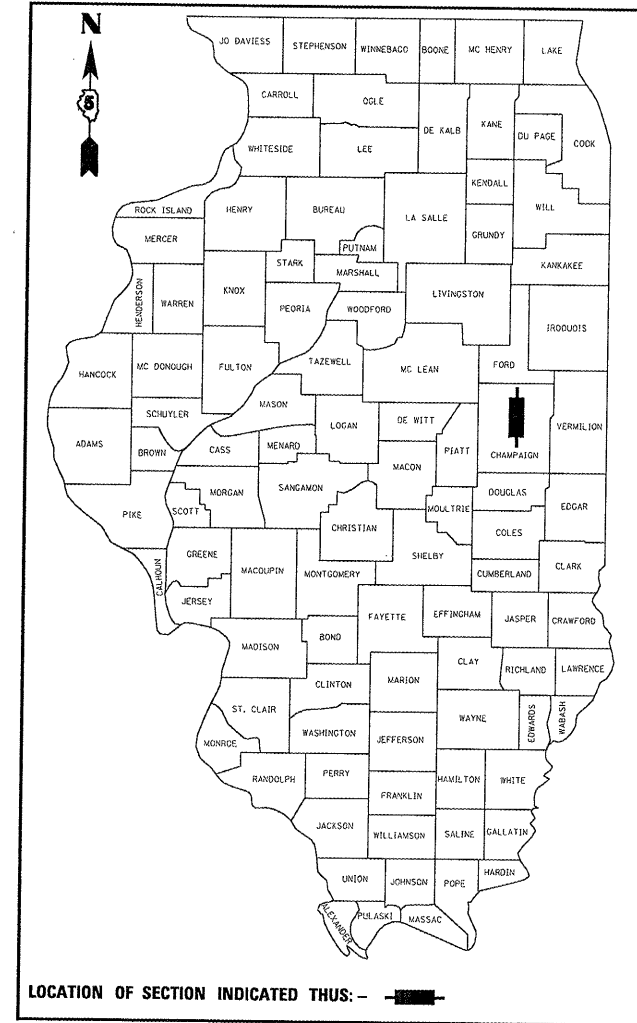
STATE OF ILLINOIS  
DEPARTMENT OF TRANSPORTATION  
DIVISION OF HIGHWAYS

**PROPOSED  
HIGHWAY PLANS**

FAP ROUTE 808 (IL RTE 130)  
SECTION 94BR-1  
PROJECT ACF-0808(038)  
BRIDGE REPLACEMENT  
CHAMPAIGN COUNTY

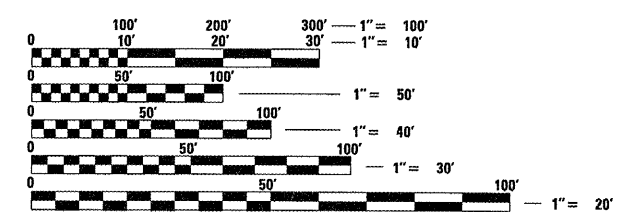
C-95-101-06  
EAST BRANCH EMBARRAS RIVER  
3.5 MILES S. OF PHILO

D-95-101-06



**DESIGN DESIGNATION**  
FAP RTE 808  
SPEED LIMIT: 55 MPH  
ADT = 4000 (2008) 4600 (2018) 5200 (2028)  
PV = 94.8%  
SU = 3.4%  
MU = 1.8%

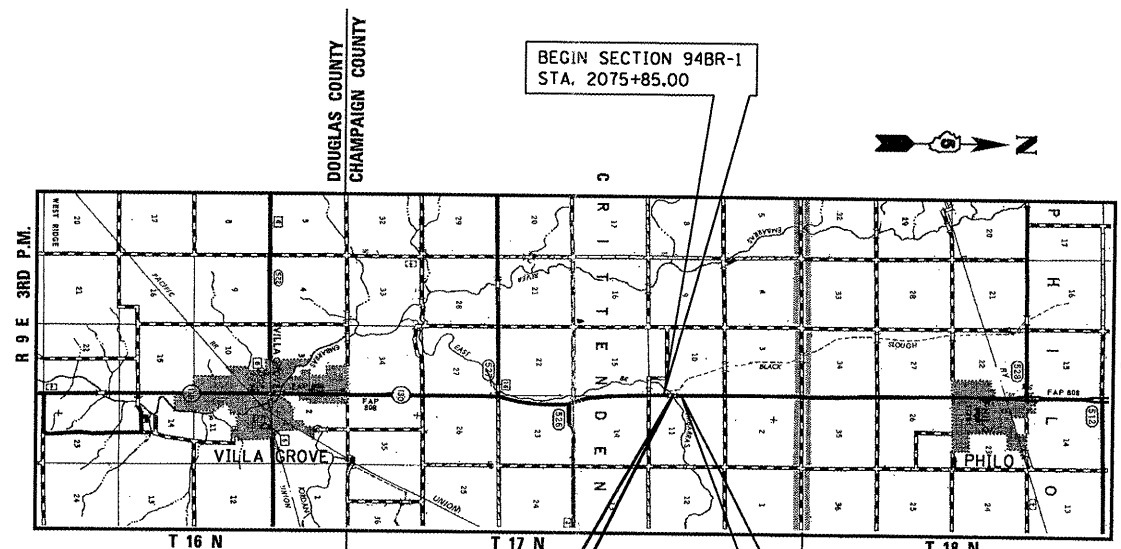
**HIGHWAY CLASSIFICATION**  
RURAL MINOR ARTERIAL



FULL SIZE PLANS HAVE BEEN PREPARED USING STANDARD ENGINEERING SCALES. REDUCED SIZED PLANS WILL NOT CONFORM TO STANDARD SCALES. IN MAKING MEASUREMENTS ON REDUCED PLANS, THE ABOVE SCALES MAY BE USED.

J.U.L.I.E.  
JOINT UTILITY LOCATION INFORMATION FOR EXCAVATION  
1-800-892-0123  
OR 811  
CRITTENDEN TOWNSHIP

PROJECT ENGINEER: JASON W. STULTS  
SQUAD LEADER: RUSTIN KEYS 217-465-4181  
CONTRACT NO. 70582

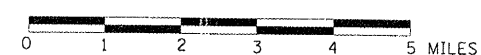


BEGIN SECTION 94BR-1  
STA. 2075+85.00

END SECTION 94BR-1  
STA. 2083+15.00

SECTION 94BR-1  
PROPOSED S.N. 010-0286  
EXISTING S.N. 010-0113  
IL 130 Q STATION 2079+82.00  
3 SPAN CIP CONCRETE SLAB  
122'-0" BK. TO BK. ABUT  
39° RT FWD. SKEW  
CLEAR WIDTH = 36'-0"

LOCATION MAP



GROSS LENGTH = 730.00 FT. = 0.138 MILE  
NET LENGTH = 730.00 FT. = 0.138 MILE

**MARK A. REITZ**  
062-047531  
REGISTERED  
PROFESSIONAL  
ENGINEER  
OF  
ILLINOIS  
SEAL

*Mark A. Reitz* 5/16/11  
MARK A. REITZ P.E. #062-047531 DATE  
EXPIRES: 11/30/2011  
HURST-ROSCHÉ ENGINEERS, INC.

STATE OF ILLINOIS  
DEPARTMENT OF TRANSPORTATION  
DIVISION OF HIGHWAYS

SUBMITTED 10/12 20 11  
*Joyelle A. Dowson*  
DEPUTY DIRECTOR OF HIGHWAYS, REGION THREE ENGINEER

Feb 3 20 12  
*John D. Barangetti P.E./a*  
actg ENGINEER OF DESIGN AND ENVIRONMENT

Feb 3 20 12  
*William R. Freyler*  
actg DIRECTOR OF HIGHWAYS CHIEF ENGINEER

PRINTED BY THE AUTHORITY  
OF THE STATE OF ILLINOIS

HURST-ROSCHÉ ENGINEERS, INC.  
HILLSBORO, ILLINOIS 62049  
(217)532-3959 FAX (217)532-3212

**HR**  
HURST-ROSCHÉ  
ENGINEERS, INC.