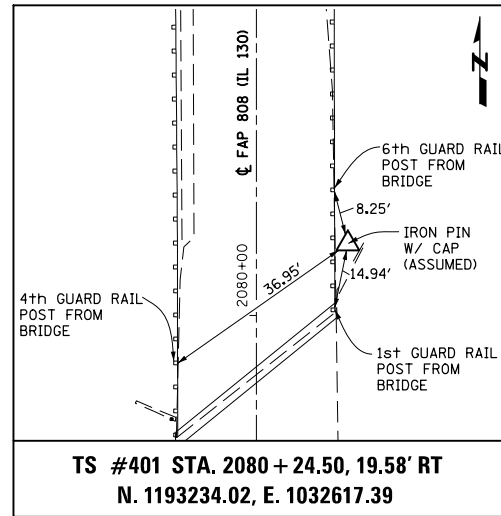
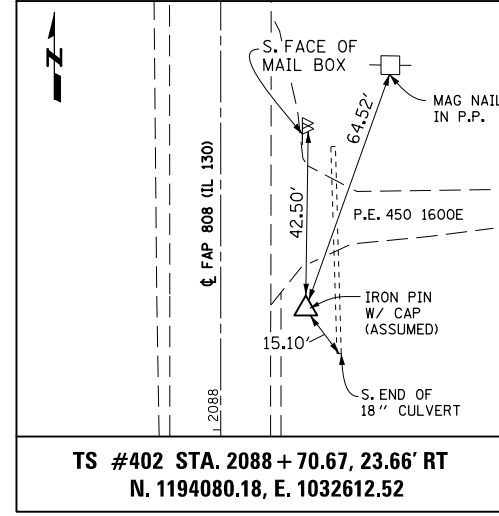


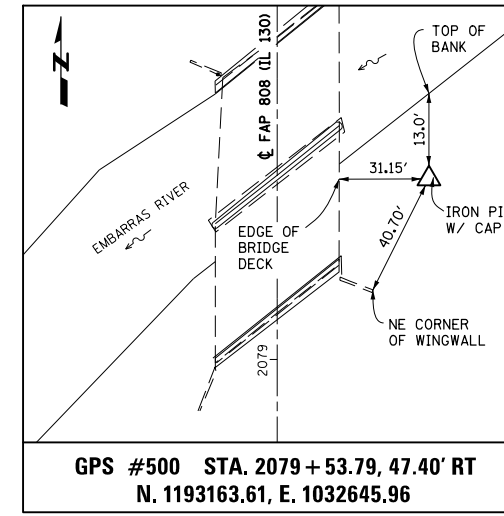
TS #400 STA. 2077 + 60.16, 17.02' RT
N. 1192969.66, E. 1032617.63



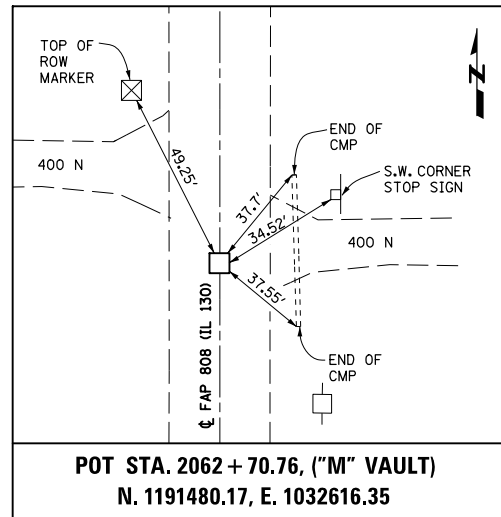
TS #401 STA. 2080 + 24.50, 19.58' RT
N. 1193234.02, E. 1032617.39



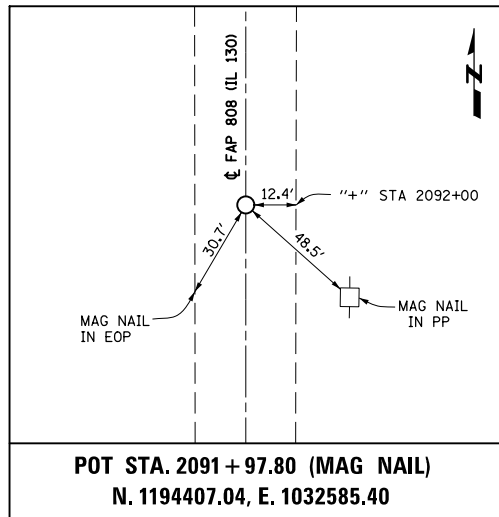
TS #402 STA. 2088 + 70.67, 23.66' RT
N. 1194080.18, E. 1032612.52



GPS #500 STA. 2079 + 53.79, 47.40' RT
N. 1193163.61, E. 1032645.96



POT STA. 2062 + 70.76, ("M" VAULT)
N. 1191480.17, E. 1032616.35



POT STA. 2091 + 97.80 (MAG NAIL)
N. 1194407.04, E. 1032585.40

BM #4800-1
 CHISELED SQUARE ON TOP OF THE NORTHWEST
 ABUTMENT OF STRUCTURE NO. 010-0113
 STA 2079+78.29, 17.78' LT ELEV = 657.97

FILE NAME =	USER NAME = keysrb	DESIGNED - JJC	REVISED -
ei:\pw\work\p\dot\keysrb\02270790\057052-sh-t-ATB.dgn		DRAWN - UJ	REVISED -
	PLOT SCALE = 40.0000' / in.	CHECKED - MAR	REVISED -
	PLOT DATE = 6/2/2011	DATE - 5-13-11	REVISED -

**STATE OF ILLINOIS
 DEPARTMENT OF TRANSPORTATION**

ALIGNMENT, TIES & BENCHMARKS

SCALE: NONE SHEET NO. 1 OF 1 SHEETS STA. TO STA.

F.A.P. RTE.	SECTION	COUNTY	TOTAL SHEETS	SHEET NO.
808	94BR-1	CHAMPAIGN	50	8
CONTRACT NO. 70582				
FED. ROAD DIST. NO. 5 ILLINOIS FED. AID PROJECT				