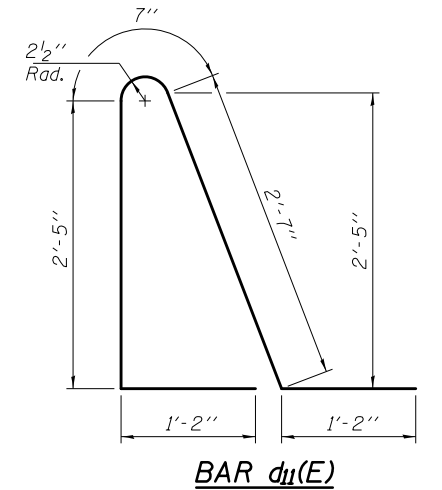
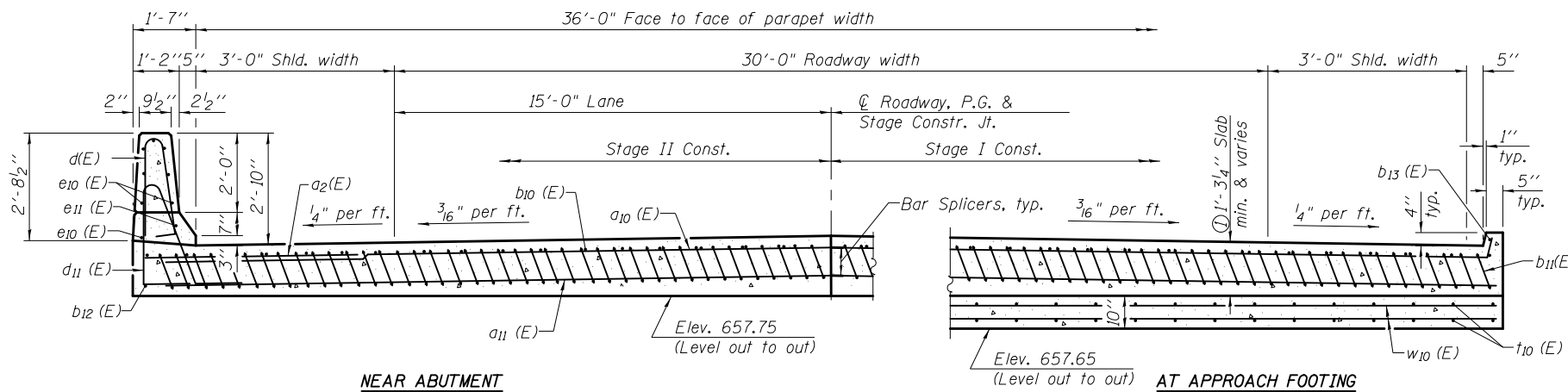


Notes:
 See sheet 12 of 19 for Detail A and View B-B.
 Approach slab and parapet concrete shall be paid for as Concrete Superstructure.
 Approach footing concrete shall be paid for as Concrete Structures.
 Reinforcement shall be paid for as Reinforcement Bars, Epoxy Coated.
 For v(E) bar details, see sheet 11 of 19.
 The approach footing maximum applied service bearing pressure (Qmax) = 2.0 ksf.
 For bar splicer details, see sheet 18 of 19.
 Cost of excavation for approach footing included with Concrete Structures.
 For Porous Granular Embankment (Special) and drainage treatment details, see sheet 2 of 19.
 For additional parapet details, and d(E) bar details see sheet 11 of 19.

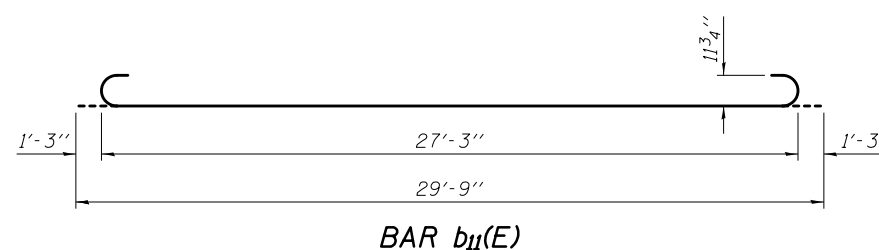
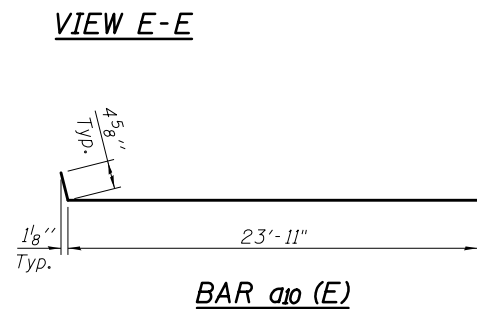
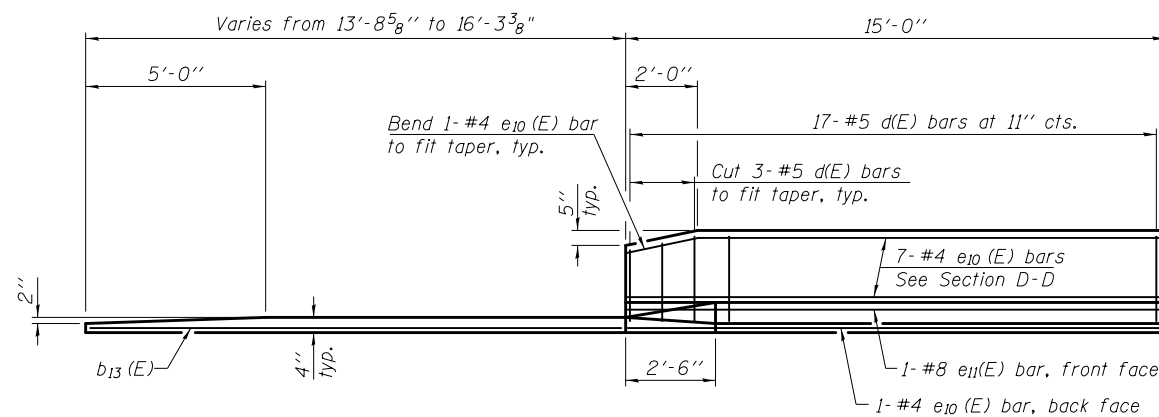


* Tilt #9 b11(E) bars as required to maintain clearance.
 *** Cost included with Concrete Superstructure.

**TWO APPROACHES
 BILL OF MATERIAL**

Bar	No.	Size	Length	Shape
a10 (E)	100	#4	24'-4"	—
a11 (E)	184	#5	23'-11"	—
a12 (E)	48	#6	6'-6"	—
b10 (E)	64	#4	29'-8"	—
b11 (E)	180	#9	29'-9"	—
b12 (E)	4	#4	14'-8"	—
b13 (E)	8	#4	9'-0"	—
d(E)	68	#5	5'-7"	⤴
d11(E)	68	#5	7'-11"	⤴
e10 (E)	32	#4	14'-8"	—
e11(E)	4	#8	14'-8"	—
t10 (E)	152	#4	12'-6"	—
w10 (E)	160	#5	23'-11"	—
Concrete Superstructure		Cu. Yd.	123.4	
Concrete Structures		Cu. Yd.	30.1	
** Reinforcement Bars, Epoxy Coated		Pound	32,940	

**Reinforcement Bars, Epoxy Coated:
 Superstructure= 27,675 lbs.
 Substructure= 5,265 lbs.



HURST-ROSCHKE ENGINEERS, INC.
 HILLSBORO, ILLINOIS 62049
 (217)552-3959 FAX (217)552-3212
 HR JOB # 190-1580

HR
 HURST-ROSCHKE
 ENGINEERS, INC.

BA-R

7-1-10

FILE NAME =	USER NAME =	DESIGNED - JSP	REVISED -
		CHECKED - CJC	REVISED -
		DRAWN - UJ	REVISED -
		CHECKED - RVB	REVISED -

STATE OF ILLINOIS
 DEPARTMENT OF TRANSPORTATION

BRIDGE APPROACH SLAB DETAILS
 STRUCTURE NO. 010-0286

SHEET NO. 13 OF 19 SHEETS

F.A.P. RTE.	SECTION	COUNTY	TOTAL SHEETS	SHEET NO.
808	94BR-1	CHAMPAIGN	50	26
CONTRACT NO. 705B2			ILLINOIS FED. AID PROJECT	

(Sheet 2 of 2)