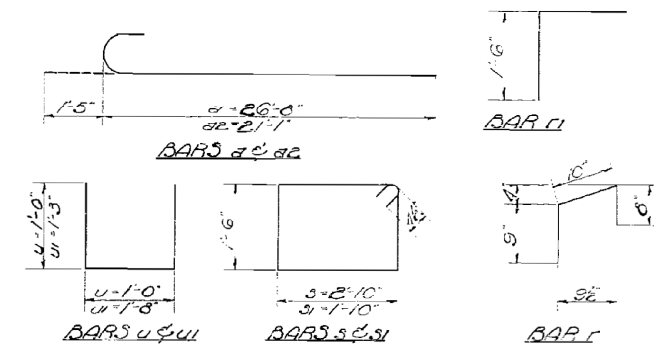
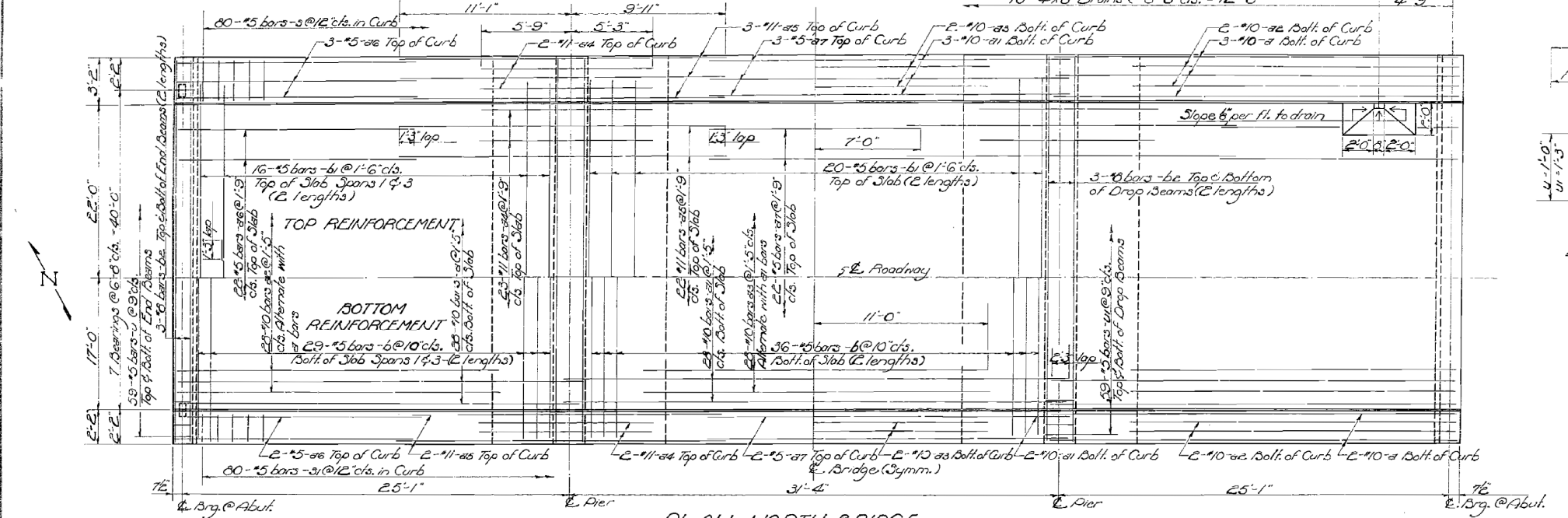
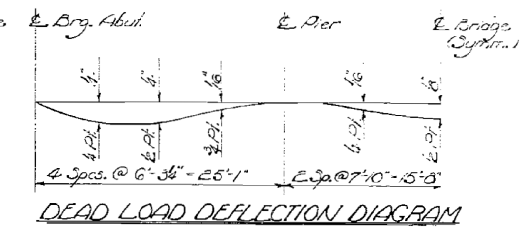
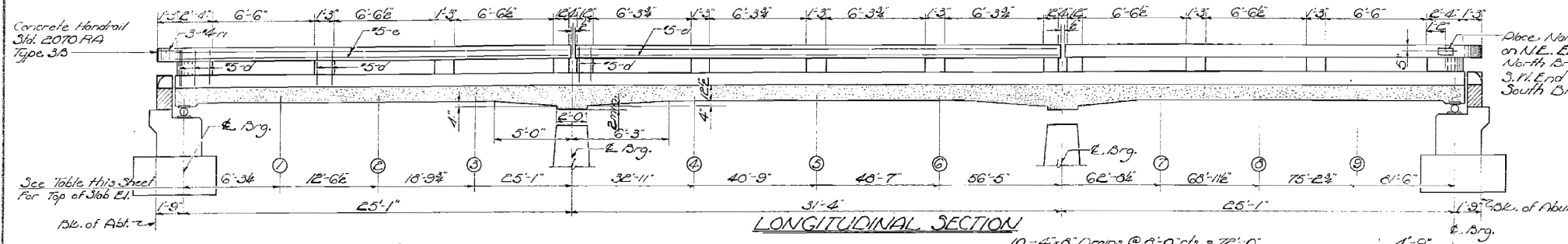


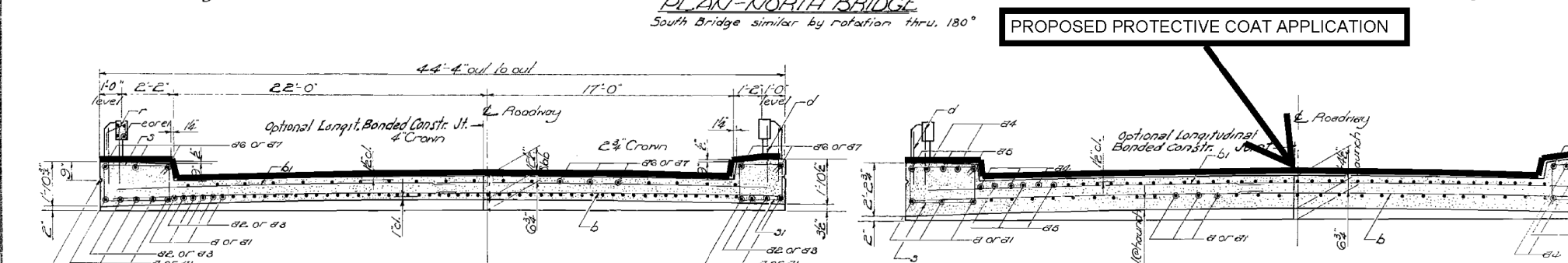
STATE OF ILLINOIS
DEPARTMENT OF PUBLIC WORKS & BUILDINGS
DIVISION OF HIGHWAYS

PROJECT NO.	SECTION	COUNTY	TOTAL SHEETS	SHEET NO.	SHEET NO. 2
F.A.I.R.T. 74	57-17B	MCLEAN	19	6	6 SHEETS
FED. ROAD DIST. NO. 7	ILLINOIS	FED. AID PROJECT			



BILL OF MATERIAL - P. BRIDGES

Bar	No.	Size	Length	Spaced
4	132	#10	22'-1"	C
41	66	#10	33'-6"	
42	120	#10	22'-6"	C
43	64	#10	22'-0"	
44	108	#11	11'-0"	
45	108	#11	21'-0"	
46	108	#5	15'-9"	
47	54	#5	14'-0"	
6	376	#5	22'-3"	
61	208	#5	21'-6"	
62	96	#6	23'-0"	
9	160	#5	9'-5"	□
91	160	#5	7'-5"	□
11	472	#5	3'-0"	U
111	472	#5	4'-2"	U
11	216	#5	2'-9"	
11	32	#5	25'-6"	
11	16	#5	31'-0"	
11	112	#5	2'-3"	↑
11	24	#4	3'-0"	↑
Class A Concrete		Cu. Yds.	334.1	
Handrail Concrete		Cu. Yds.	2.0	
Reinforcement Bars		Lbs.	22,830	
Structural Steel		Lbs.	20,040	
Name Plates		Each	2	



DESIGNED: Joseph W. Linn
CHECKED: C. W. Shick
DRAWN: R. W. Jacobs
CHECKED: C. W. J.

APR 13 1961

EXAMINED: W. E. Dammann
PASSED: E. J. ...
APPROVED: R. H. ...

TYPICAL SECTION; FOUR-LANE WITH CURB; DUAL STRUCTURES

Location	E. Brg. @ Abut. (1)	(2)	(3)	E. Pier-1	(4)	(5)	(6)	E. Pier-2	(7)	(8)	E. Brg. @ Abut.		
Theoretical Elevation	755.75	755.70	755.61	755.05	755.00	755.93	755.97	756.02	756.07	756.10	756.14	756.18	756.22
Theoretical E.I. + 10.0 Def.	755.75	755.80	755.83	755.86	755.88	755.93	755.90	756.02	756.07	756.11	756.16	756.20	756.22

SUPERSTRUCTURE
F.A.I.R.T. 74 - SEC. 57-17B
MCLEAN COUNTY
STA. 1512.64

Added Long. Banded Concrete Joint. A.D. 12/12/63.