

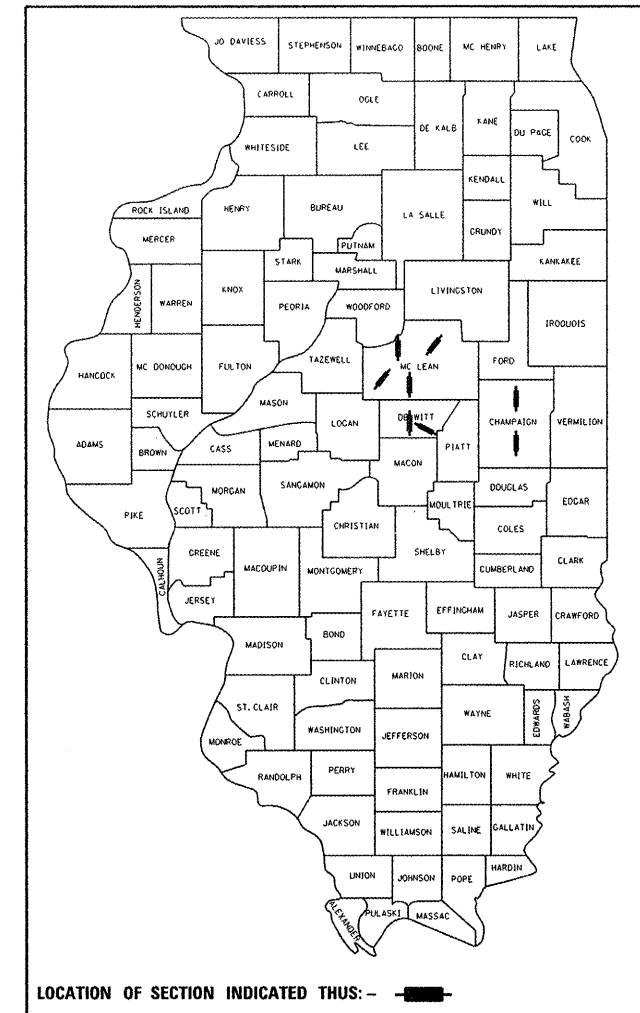
03-09-12 LETTING ITEM 079

STATE OF ILLINOIS  
 DEPARTMENT OF TRANSPORTATION  
 DIVISION OF HIGHWAYS  
**PROPOSED  
 HIGHWAY PLANS**  
 VARIOUS ROUTE  
 SECTION FY2012 BRIDGE DECK SEALING  
 VARIOUS DISTRICT WIDE BRIDGE DECK SEALING  
 CHAMPAIGN, DEWITT, & MCLEAN COUNTY

F.A.I. RTE.	SECTION	COUNTY	TOTAL SHEETS	SHEET NO.
..	..	...	17	1
ILLINOIS			CONTRACT NO. 70917	

\* VARIOUS  
 \*\* FY2012 BRIDGE DECK SEALING  
 \*\*\* CHAMPAIGN, DEWITT, & MCLEAN

FOR INDEX OF SHEETS, SEE SHEET NO. 2  
 FOR SUMMARY OF QUANTITIES, SEE SHEET NO. 7

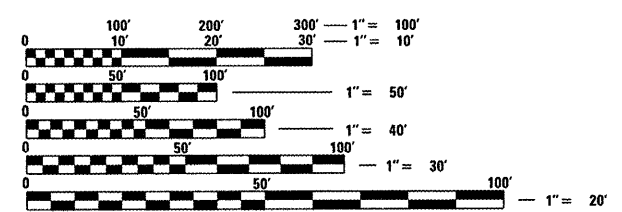


**CURRENT ADT**  
 FAI 55 BUSINESS (VETERANS PARKWAY)  
 HIGHEST LOCATION SHOWN  
 2011 ADT = 48,700  
 2031 ADT = 68,200  
 PU & PC = 94.1%  
 SU = 2.4%  
 MU = 3.5%

C-95-014-11

FOR LOCATION MAPS,  
 SEE SHEETS NO. 2, 3, AND 4

**DESIGN DESIGNATION**  
 N. A.



FULL SIZE PLANS HAVE BEEN PREPARED USING STANDARD ENGINEERING SCALES. REDUCED SIZED PLANS WILL NOT CONFORM TO STANDARD SCALES. IN MAKING MEASUREMENTS ON REDUCED PLANS, THE ABOVE SCALES MAY BE USED.

J.U.L.I.E.  
 JOINT UTILITY LOCATION INFORMATION FOR EXCAVATION  
 1-800-892-0123  
 OR 811

PROJECT ENGINEER: TIM BRANDENBURG  
 PROJECT MANAGER: TIM BRANDENBURG  
 (217) 465-4181  
 CONTRACT NO. 70917

GROSS LENGTH = x.xx FT. = x.xxx MILE  
 NET LENGTH = x.xx FT. = x.xxx MILE

STATE OF ILLINOIS  
 DEPARTMENT OF TRANSPORTATION  
 DIVISION OF HIGHWAYS  
 SUBMITTED 11/18 20 11  
Joseph E. Crowe (KAG)  
 DEPUTY DIRECTOR OF HIGHWAYS, REGION ENGINEER  
Feb 3 20 12  
John D. Baranowski, P.E., Ia  
 acting ENGINEER OF DESIGN AND ENVIRONMENT  
Feb 03 20 12  
William R. Frey, Ia  
 acting DIRECTOR OF HIGHWAYS, CHIEF ENGINEER

**PRINTED BY THE AUTHORITY  
 OF THE STATE OF ILLINOIS**

## INDEX OF SHEETS

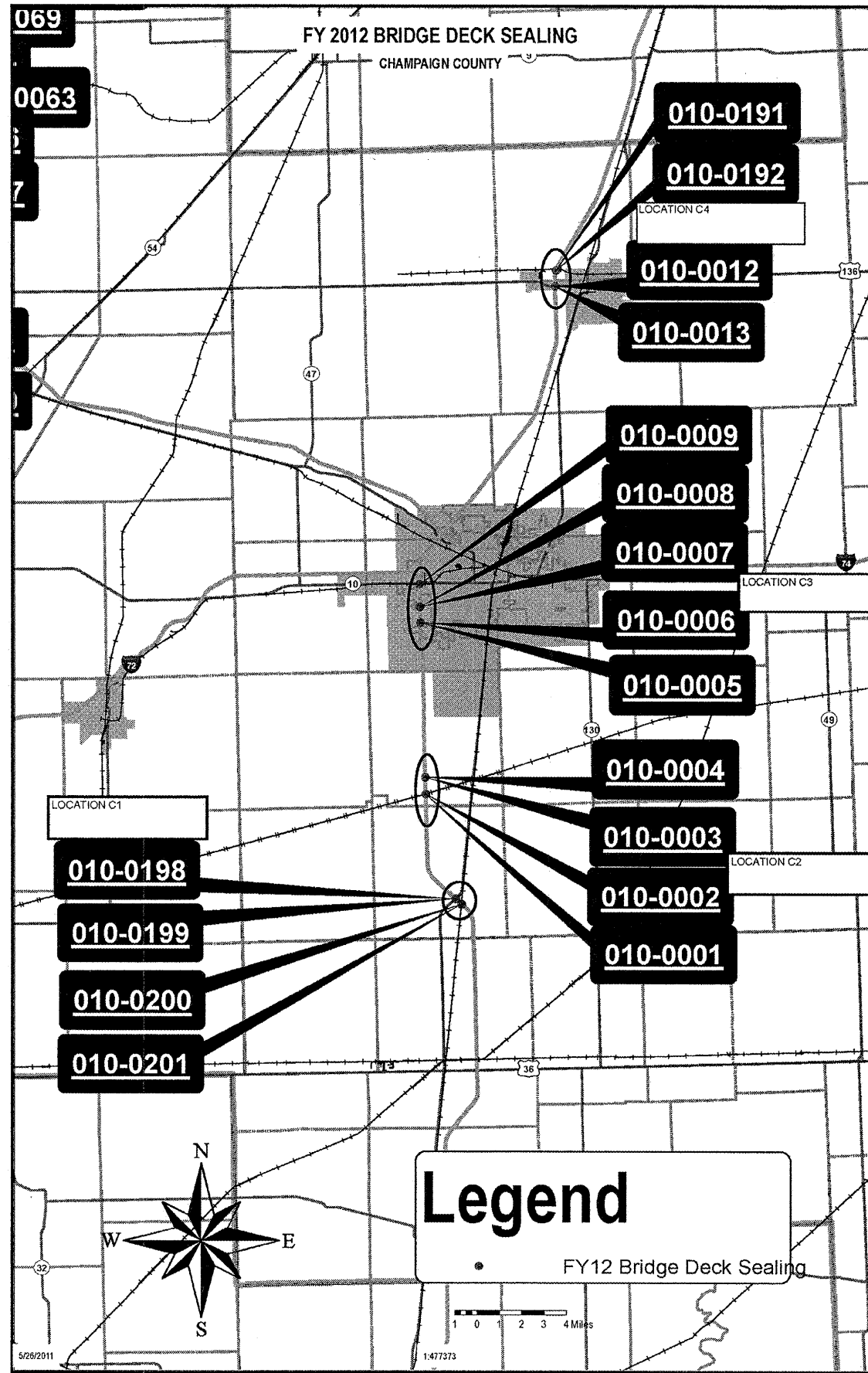
SHEET NO.	DESCRIPTION
1	COVER SHEET
2	INDEX OF SHEETS
2	LIST OF HIGHWAY STANDARDS
3	LOCATION MAP - CHAMPAIGN COUNTY
4	LOCATION MAP - MCLEAN COUNTY
5	LOCATION MAP - DEWITT COUNTY
6	GENERAL NOTES
7	SUMMARY OF QUANTITIES
8-11	TYPICAL APPLICATION SECTIONS
12-14	SCHEDULE OF QUANTITIES - APPLICATION
15-17	SCHEDULE OF QUANTITIES - TC & P

## LIST OF HIGHWAY STANDARDS

STANDARD NO.	DESCRIPTION
0000001-06	STANDARD SYMBOLS, ABBREVIATIONS AND PATTERNS
001006	DECIMAL OF AN INCH AND OF A FOOT
701201-04	LANE CLOSURE, 2 LANE, 2 WAY, DAY ONLY
701400-05	APPROACH TO LANE CLOSURE, FREEWAY/EXPRESSWAY
701406-06	LANE CLOSURE, FREEWAY/EXPRESSWAY, DAY OPERATIONS ONLY
701411-08	LANE CLOSURE, MULTILANE, AT ENTRANCES OR EXIT RAMP
701446-03	TWO LANE CLOSURE, FREEWAY/EXPRESSWAY
701901-02	TRAFFIC CONTROL DEVICES

\* VARIOUS  
 \*\* FY2012 BRIDGE DECK SEALING  
 \*\*\* CHAMPAIGN, DEWITT, & MCLEAN

FILE NAME =	USER NAME = p1ersonbr	DESIGNED -	REVISED -	<b>STATE OF ILLINOIS DEPARTMENT OF TRANSPORTATION</b>	<b>INDEX OF SHEETS LIST OF HIGHWAY STANDARDS</b>	F.A.I. RTE.	SECTION	COUNTY	TOTAL SHEETS	SHEET NO.
c:\pw_work\puidot\p1ersonbr\d0286468\05	0917-shr-gennote.dgn	DRAWN -	REVISED -			*	**	***	17	2
PLOT SCALE = 40.0000' / 1" =	CHECKED -	REVISED -	CONTRACT NO. 70917							
PLOT DATE = 11/18/2011	DATE -	REVISED -	ILLINOIS FED. AID PROJECT							
					SCALE:	SHEET OF SHEETS STA. TO STA.				



\* VARIOUS  
\*\* FY2012 BRIDGE DECK SEALING  
\*\*\* CHAMPAIGN, DEWITT, & MCLEAN

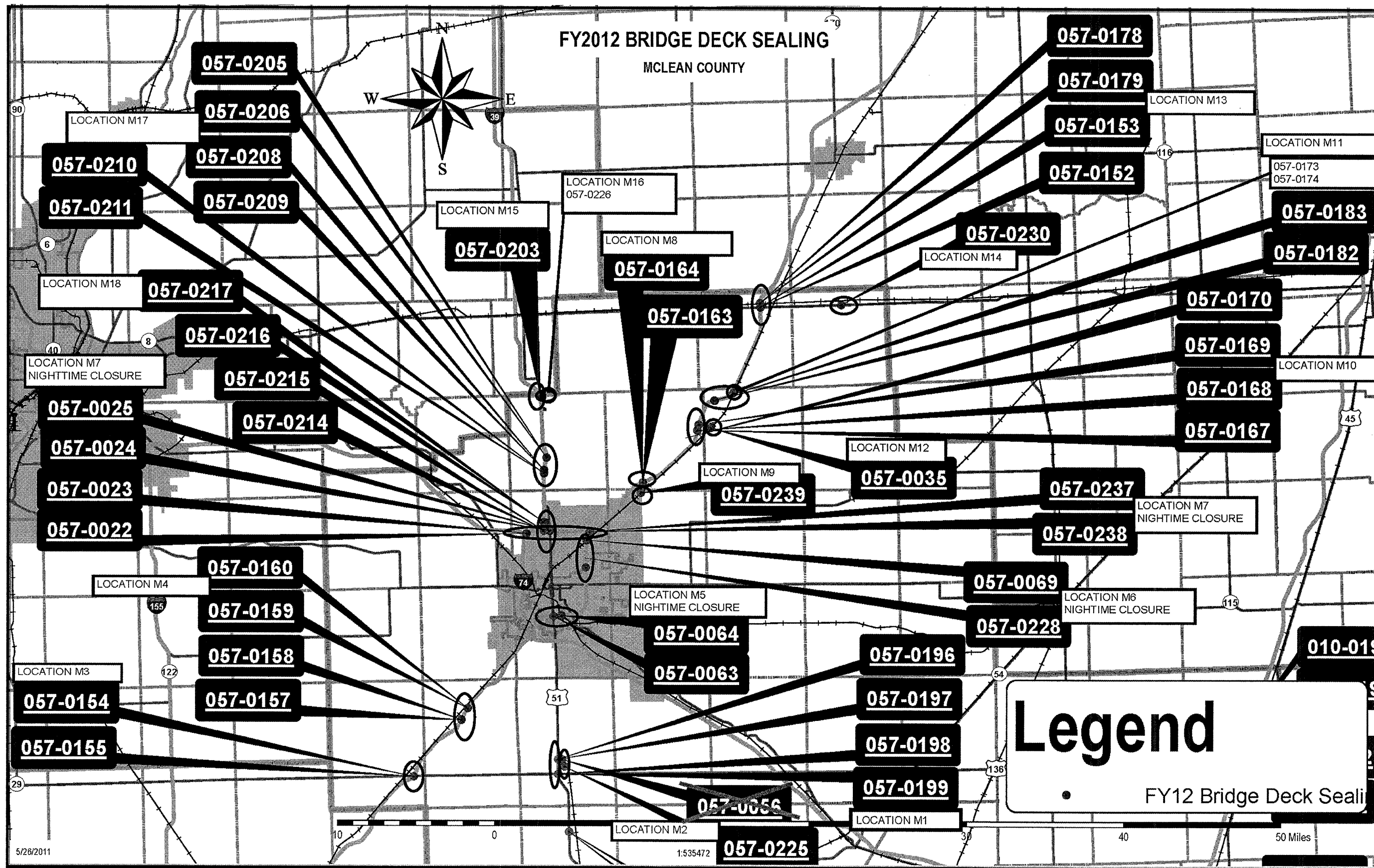
FILE NAME =	USER NAME = p1ersonbr	DESIGNED -	REVISED -
cs:\pw_work\p1ridot\p1ersonbr\d0286468\05	0917-sht-loc.maps.dgn	DRAWN -	REVISED -
	PLOT SCALE = 40.0000' / 1"	CHECKED -	REVISED -
	PLOT DATE = 11/18/2011	DATE -	REVISED -

**STATE OF ILLINOIS**  
**DEPARTMENT OF TRANSPORTATION**

**LOCATION MAP**  
**CHAMPAIGN COUNTY**

SCALE: SHEET OF SHEETS STA. TO STA.

F.A.I. RTE.	SECTION	COUNTY	TOTAL SHEETS	SHEET NO.
*	**	***	17	3
CONTRACT NO. 70917			ILLINOIS FED. AID PROJECT	



FILE NAME =	USER NAME = piersonbr	DESIGNED -	REVISED -
ct:\pwork\pwork\piersonbr\d0286468\05	0917-sht-loc.mps.dgn	DRAWN -	REVISED -
	PLOT SCALE = 40.0000 "/td> <td>CHECKED -</td> <td>REVISED -</td>	CHECKED -	REVISED -
	PLOT DATE = 11/18/2011	DATE -	REVISED -

**STATE OF ILLINOIS**  
**DEPARTMENT OF TRANSPORTATION**

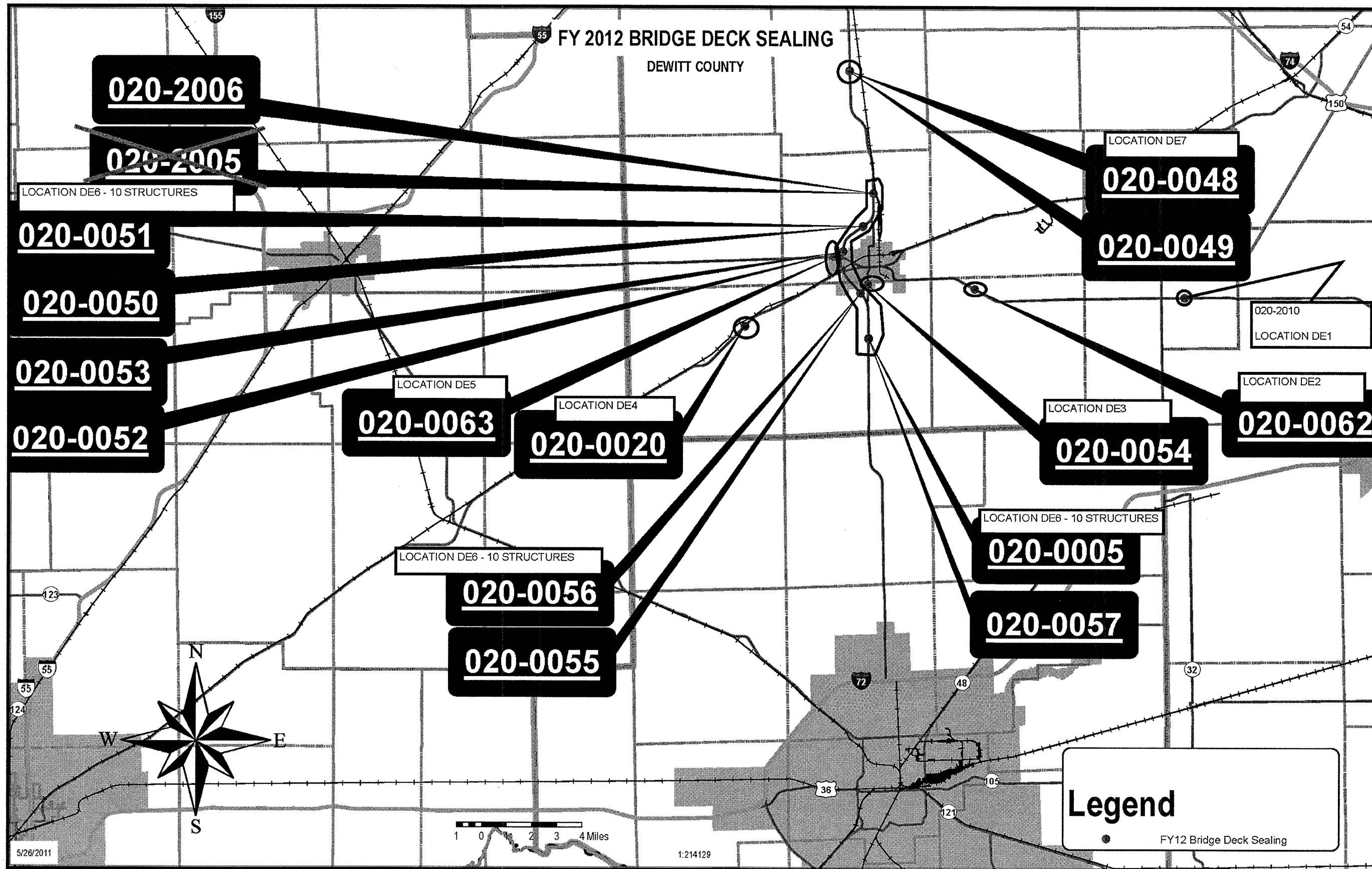
**LOCATION MAP**  
**MCLEAN COUNTY**

SCALE: SHEET OF SHEETS STA. TO STA.

F.A.I. RTE.	SECTION	COUNTY	TOTAL SHEETS	SHEET NO.
*	**	***	17	4
CONTRACT NO. 70917				
ILLINOIS FED. AID PROJECT				

\* VARIOUS  
\*\* FY2012 BRIDGE DECK SEALING  
\*\*\* CHAMPAIGN, DEWITT, & MCLEAN





5/26/2011

1:214129

**Legend**

● FY12 Bridge Deck Sealing

\* VARIOUS  
 \*\* FY2012 BRIDGE DECK SEALING  
 \*\*\* CHAMPAIGN, DEWITT, & MCLEAN

FILE NAME =	USER NAME = p1ersonbr	DESIGNED -	REVISED -
c:\p1r_work\p1vidot\p1ersonbr\d0286468\050917-sh-t-loc.maps.dgn		DRAWN -	REVISED -
	PLOT SCALE = 40,0000 ' / in.	CHECKED -	REVISED -
	PLOT DATE = 11/18/2011	DATE -	REVISED -

STATE OF ILLINOIS  
 DEPARTMENT OF TRANSPORTATION

LOCATION MAP  
 DEWITT COUNTY

SCALE: SHEET OF SHEETS STA. TO STA.

F.A.I. RTE.	SECTION	COUNTY	TOTAL SHEETS	SHEET NO.
*	**	***	17	5
			CONTRACT NO. 70917	
ILLINOIS FED. AID PROJECT				

## GENERAL NOTES

G.N.-100

ENGLISH UNITS OF MEASUREMENT SHALL GOVERN OVER AND SUPERSEDE ANY METRIC UNITS SHOWN IN THIS CONTRACT. WHERE INCLUDED, METRIC UNITS ARE FOR INFORMATION ONLY.

G.N.-107.12

THE NAME, ADDRESS AND TELEPHONE NUMBER OF THE LOCAL RAILROAD CONTACT IS:

Illinois Central Railroad

Mr. Jonathan Griffith  
Technical Service Engineer  
CN Railroad  
17641 South Ashland Avenue  
Homewood, IL 60430  
(708) 332-6581

Premier Cooperative, Inc.

Mr. Roger Miller  
General Manager  
Premier Cooperative Inc.  
2104 West Park Court  
Champaign, IL 61821  
(217) 355-1983

Toledo, Peoria & Western Railway

Mr. Steve Lee  
Track Supervisor Engineering  
Toledo, Peoria and Western Railway  
1990 East Washington Street  
East Peoria, IL 61611  
(309) 698-2600

Norfolk Southern Railroad

Ms. Debbie Adams  
Division Office Manager-Illinois Division  
Norfolk Southern Railway Company  
1735 East Condit Street  
Decatur, IL. 62521  
(217) 425-2042

Union Pacific Railroad

Mr. David W. McKernan  
Manager Industry & Public Projects  
Union Pacific Railroad  
100 North Broadway, Suite 1500  
St. Louis, MO 63102  
(314) 331-0682

SPECIAL ATTENTION IS CALLED TO ARTICLE 107.12 REGARDING RAILROAD FLAGGERS. THE NAME, ADDRESS AND TELEPHONE NUMBER OF THE RAILROAD CONTACT PERSON FOR FLAGGERS IS:

Illinois Central Railroad

Ms. MaryEllen Carmody  
2800 Livernois Rd  
Troy, MI 48083  
(248) 740-6227

Premier Cooperative, Inc.

Mr. Roger Miller  
General Manager  
Premier Cooperative Inc.  
2104 West Park Court  
Champaign, IL 61821  
(217) 355-1983

Toledo, Peoria & Western Railway

Mr. Steve Lee  
Track Supervisor Engineering  
Toledo, Peoria and Western Railway  
1990 East Washington Street  
East Peoria, IL 61611  
(309) 698-2600

Norfolk Southern Railroad

Mr. Howard Swanson  
Asst. Division Engineer-Bridges Illinois Division  
Norfolk Southern Railway Company  
Illinois Division  
1735 East Condit Street  
Decatur, IL. 62521  
(217) 425-2042

Union Pacific Railroad

Mr. Aaron Brown  
MTM  
Union Pacific Railroad  
811 W. Chestnut  
Bloomington, IL 61701  
(402) 501-3734

G.N. ◊ PAVEMENT MARKINGS AND MARKERS

EXISTING PAVEMENT MARKINGS AND RAISED REFLECTIVE PAVEMENT MARKERS SHALL BE TEMPORARILY COVERED PRIOR TO APPLICATION OF THE DECK SURFACE TREATMENT, TO PREVENT THE MATERIAL FROM BEING APPLIED TO THE MARKINGS AND MARKERS. THE TEMPORARY COVERING SHALL BE REMOVED AFTER APPLICATION OF THE DECK SURFACE TREATMENT AND PRIOR TO OPENING TO TRAFFIC. COST IS INCLUDED WITH THE DECK SURFACE TREATMENT SPECIFIED.

G.N. ◊ RAILROAD PROTECTIVE LIABILITY INSURANCE (RRPLI)

DUE TO THE MULTIPLE CROSSINGS AND MULTIPLE RAILROAD COMPANIES IN THIS CONTRACT, ONLY ONE (1) RRPLI POLICY WILL BE REQUIRED FOR EACH SEPARATE RAILROAD COMPANY.

NO COMMITMENTS

\* VARIOUS  
\*\* FY2012 BRIDGE DECK SEALING  
\*\*\* CHAMPAIGN, DEWITT, & MCLEAN

FILE NAME =	USER NAME = piersonbr	DESIGNED -	REVISED -	<b>STATE OF ILLINOIS DEPARTMENT OF TRANSPORTATION</b>	<b>GENERAL NOTES</b>	F.A.I. RTE.	SECTION	COUNTY	TOTAL SHEETS	SHEET NO.
ct:\pwwork\pvidot\piersonbr\d0286468\05	0917.sht:gennote.dgn	DRAWN -	REVISED -			*	**	***	17	6
	PLOT SCALE = 48,0000' / in.	CHECKED -	REVISED -						CONTRACT NO. 70917	
	PLOT DATE = 11/18/2011	DATE -	REVISED -		SCALE:	SHEET OF SHEETS STA. TO STA.		[ILLINOIS] FED. AID PROJECT		

## SUMMARY OF QUANTITIES

LOCATION OF WORK:

CONSTRUCTION TYPE CODE:

VARIOUS ROUTES SECTION FY 2012 BRIDGE DECK SEALING MULTI-LANE INTERSTATE (FOUR AND SIX LANES) AND TWO-LANE HIGHWAYS FUNDING 100% STATE BRIDGE PREVENTATIVE MAINTENANCE 0014					
CHAMPAIGN COUNTY		MCLEAN COUNTY		DEWITT COUNTY	
RURAL	URBAN	RURAL	URBAN	RURAL	URBAN

CODE NO	ITEM	UNIT	TOTAL QUANTITY	QUANTITY	QUANTITY	QUANTITY	QUANTITY	QUANTITY	QUANTITY
58700300	CONCRETE SEALER	SQ FT	1,055,727.0	89,316.0	74,475.0	438,156.0	294,183.0	123,588.0	36,009.0
67100100	MOBILIZATION	L SUM	1.0	0.1	0.1	0.4	0.2	0.1	0.1
70100420	TRAFFIC CONTROL AND PROTECTION, STANDARD 701411	EACH	38.0	5.0	1.0	13.0	19.0	0.0	0.0
70100450	TRAFFIC CONTROL AND PROTECTION, STANDARD 701201	L SUM	1.0	0.0	0.0	0.5	0.0	0.3	0.2
70100700	TRAFFIC CONTROL AND PROTECTION, STANDARD 701406	L SUM	1.0	0.1	0.1	0.5	0.1	0.1	0.1
70100815	TRAFFIC CONTROL AND PROTECTION, STANDARD 701446	L SUM	1.0	0.0	0.0	0.0	1.0	0.0	0.0
70200100	NIGHTTIME WORK ZONE LIGHTING	L SUM	1.0	0.0	0.0	0.0	1.0	0.0	0.0
X7015005	CHANGEABLE MESSAGE SIGN	CAL DA	138.0	15.0	15.0	60.0	22.0	20.0	6.0
Z0048665	RAILROAD PROTECTIVE LIABILITY INSURANCE	L SUM	1.0	0.5	0.1	0.2	0.2	0.0	0.0

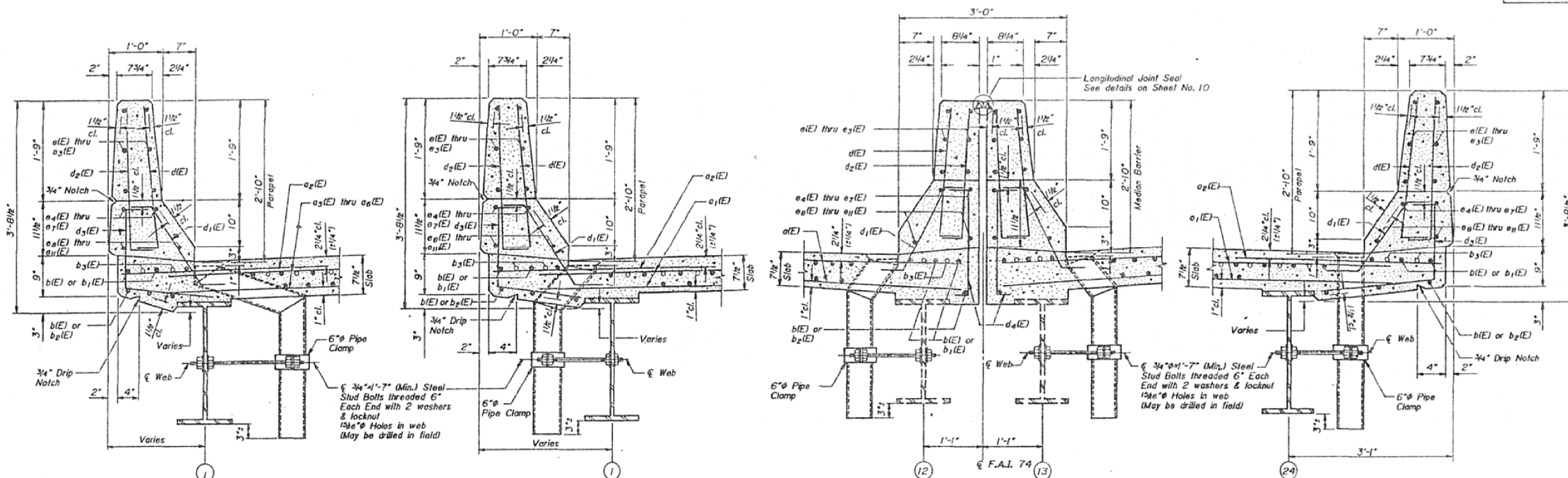
NO SPECIALTY ITEMS

\* VARIOUS  
 \*\* FY2012 BRIDGE DECK SEALING  
 \*\*\* CHAMPAIGN, DEWITT, & MCLEAN

FILE NAME =	USER NAME = piersonbr	DESIGNED -	REVISED -	<b>STATE OF ILLINOIS DEPARTMENT OF TRANSPORTATION</b>	<b>SUMMARY OF QUANTITIES</b>	F.A.I. RTE.	SECTION	COUNTY	TOTAL SHEETS	SHEET NO.
c:\pr-work\pwidot\piersonbr\d0286466\05	0917-sh-t-S00.dgn	DRAWN -	REVISED -			*	**	***	17	7
	PLOT SCALE = 40.0000' / 1" =	CHECKED -	REVISED -							
	PLOT DATE = 11/18/2011	DATE -	REVISED -		SCALE:		SHEET OF	SHEETS	STA.	TO STA.
ILLINOIS FED. AID PROJECT										CONTRACT NO. 70917

STATE OF ILLINOIS  
DEPARTMENT OF TRANSPORTATION

ROUTE NO.	SECTION	COUNTY	TOTAL SHEETS	SHEET NO.	SHEET NO. B
F.A.I. 74	04HB-2BR	CHAMPAIGN	160	68	SHEETS 23
FED. ROAD DIST. NO. 7	ILLINOIS PROJECT				



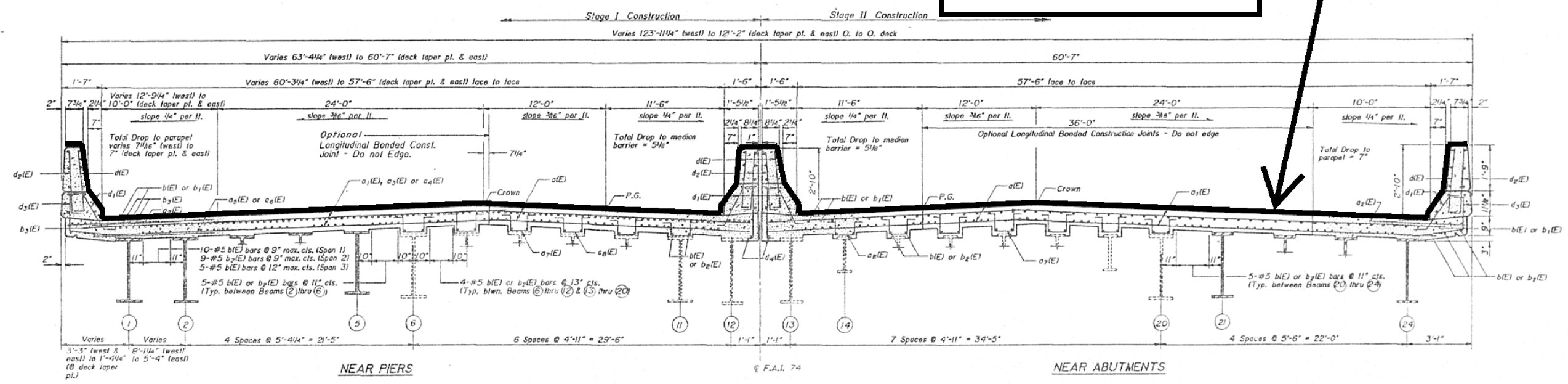
SECTION THRU NORTH PARAPET @ WEST DRAINS

SECTION THRU NORTH PARAPET @ EAST DRAINS

SECTION THRU MEDIAN BARRIER

SECTION THRU SOUTH PARAPET

See Sheet No. 9 for notes and details of Floor Drains and Pipe Clamps.



TYPICAL SIX-LANE SECTION WITH PARAPET

PROPOSED PROTECTIVE COAT APPLICATION

**BASCOR, INC.**  
consulting engineers and planners

DESIGNED:	GSP
CHECKED:	HE
DRAWN:	SAW
CHECKED:	GSP

CROSS SECTION  
(Looking East)

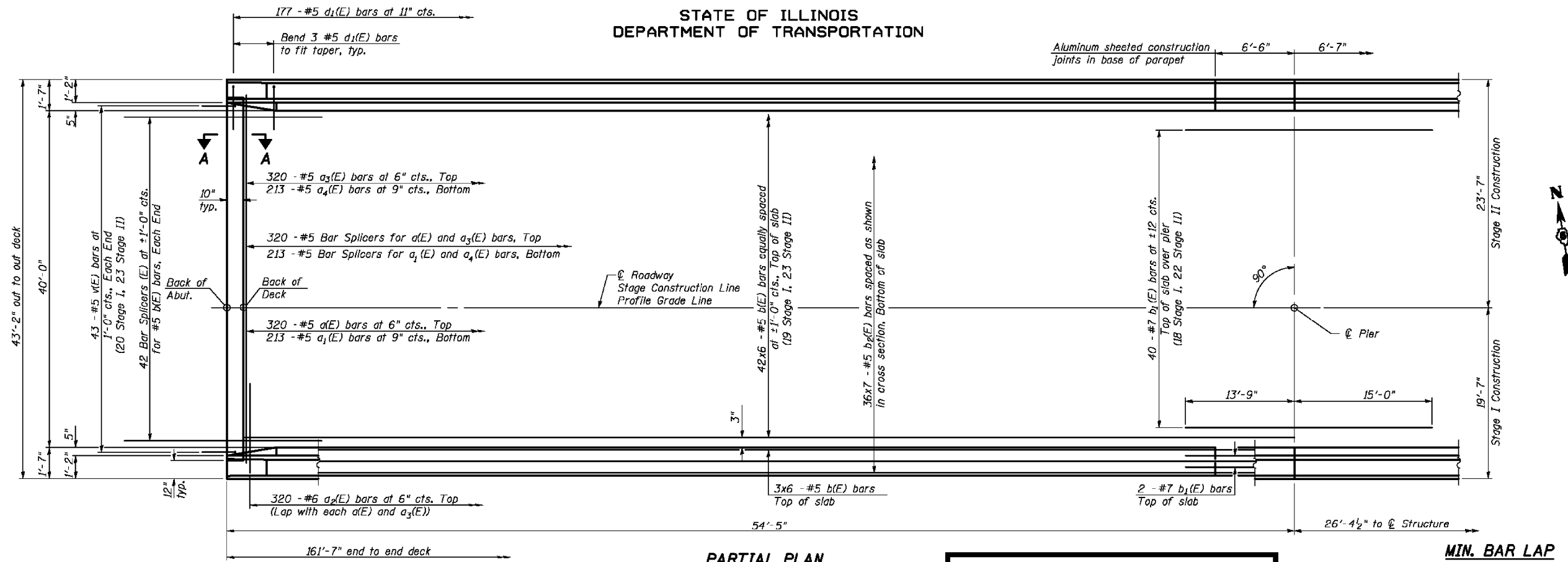
SUPERSTRUCTURE DETAILS I

F.A.I. ROUTE 74  
OVER MARKET STREET  
SECTION 04HB-2J BR  
CHAMPAIGN COUNTY  
STA. 1200+06.10

\* VARIOUS  
\*\* FY2012 BRIDGE DECK SEALING  
\*\*\* CHAMPAIGN, DEWITT, & MCLEAN

FILE NAME =	USER NAME =	DESIGNED -	REVISED -	STATE OF ILLINOIS	TYPICAL SECTION;	F.A.I. RTE.	SECTION	COUNTY	TOTAL SHEETS	SHEET NO.
ci:\pwork\pwork\personbr\d0286468\050917-sh-typical.dgn	personbr	DRAWN -	REVISED -	DEPARTMENT OF TRANSPORTATION	SIX-LANE W/PARAPET	74	04HB-2J	CHAMPAIGN	17	8
PLOT SCALE = 48.0000' / in.		CHECKED -	REVISED -						CONTRACT NO.	70917
PLOT DATE = 11/18/2011		DATE -	REVISED -		SCALE:	SHEET	OF	SHEETS	STA.	TO STA.
									ILLINOIS FED. AID PROJECT	

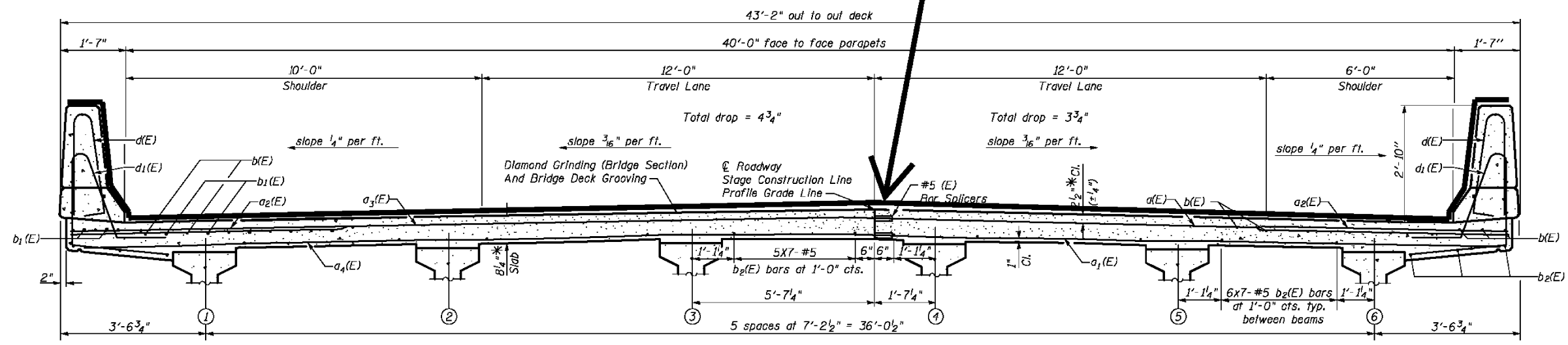
STATE OF ILLINOIS  
DEPARTMENT OF TRANSPORTATION



**PARTIAL PLAN**

PROPOSED PROTECTIVE COAT APPLICATION

MIN. BAR LAP  
#5 Bar = 1'-8"



**TYPICAL SECTION; FOUR-LANE WITH PARAPET; DUAL STRUCTURES**

**Notes:**  
See Sheet 12 of 27 for superstructure details and Bill of Material.  
Bars indicated thus 20 x 3-#5 etc. indicates 20 lines of bars with 3 lengths per line.  
See Sheet 12 of 27 for parapet reinforcement.  
See Sheet 27 of 27 for bar splicers details.  
See Sheet 11 of 27 for diaphragm details.

**CROSS SECTION**  
(Looking Upstation Westbound)  
(Looking Downstation Eastbound)

\* Prior to grinding

**SUPERSTRUCTURE  
I-74 OVER LITTLE KICKAPOO CREEK  
STRUCTURE NO. 057-0120  
AND 057-0121**

**STRAND ASSOCIATES, INC.**

DESIGNED	RRD
CHECKED	AJS
DRAWN	KAS
CHECKED	JAR

SHEET NO.	F.A.I. RTE.	SECTION	COUNTY	TOTAL SHEETS	SHEET NO.
10	74	(57-21B)BR	MCLEAN	61	22
27 SHEETS			SUPERSTRUCTURE DETAILS (1 OF 3)		
			CONTRACT NO. 70641		
FED. ROAD DIST. NO. 7 ILLINOIS FED. AID PROJECT					

\* VARIOUS  
\*\* FY2012 BRIDGE DECK SEALING  
\*\*\* CHAMPAIGN, DEWITT, & MCLEAN

FILE NAME =	USER NAME = ppersonbr	DESIGNED -	REVISED -
et:\pwork\pwork\pwork\personbr\d0286468\0570121-17-sh-typical.dgn		DRAWN -	REVISED -
PLOT SCALE = 48.0000' / in.		CHECKED -	REVISED -
PLOT DATE = 11/18/2011		DATE -	REVISED -

STATE OF ILLINOIS  
DEPARTMENT OF TRANSPORTATION

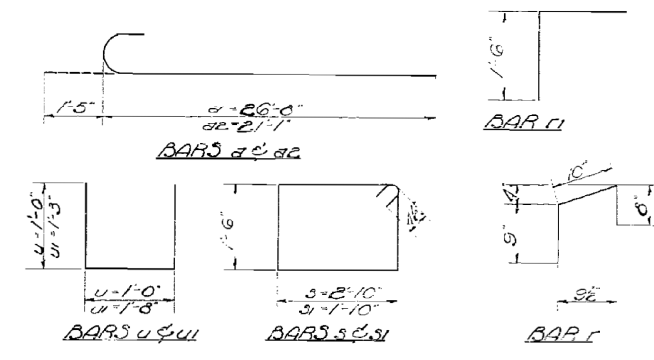
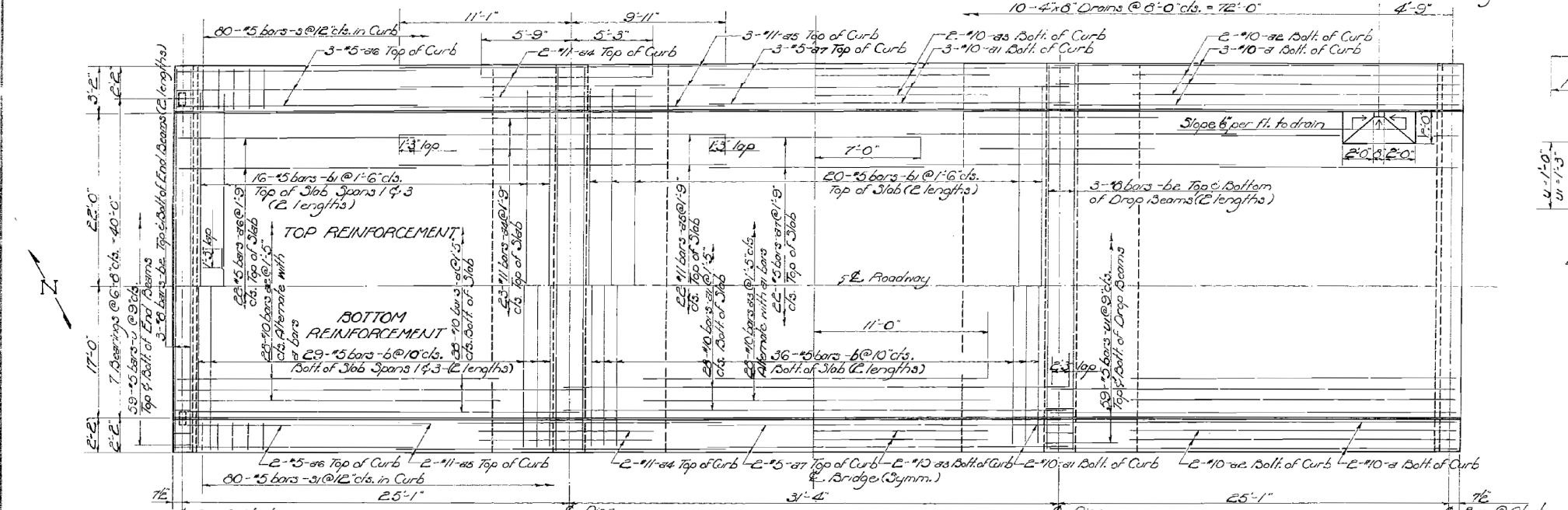
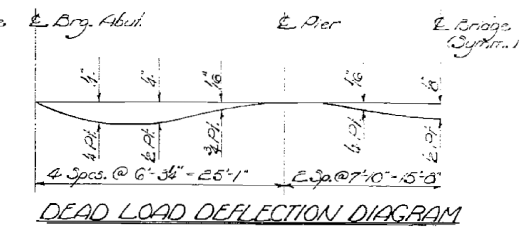
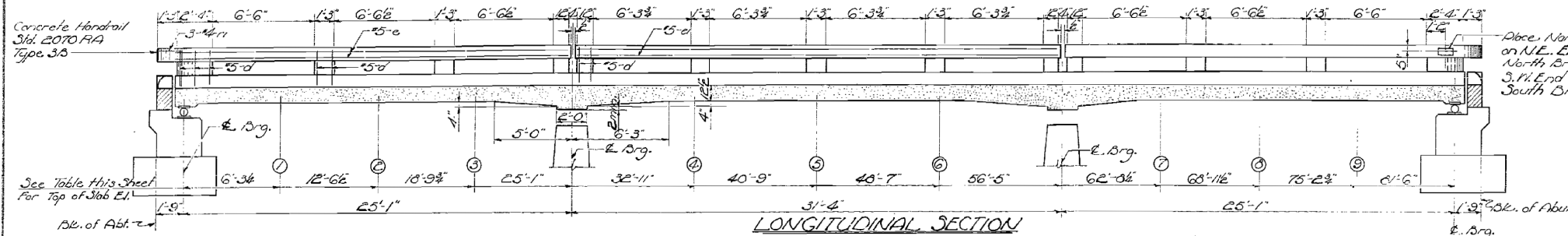
TYPICAL SECTION;  
FOUR-LANE W/PARAPET DUAL STRUCTURES

SCALE: SHEET OF SHEETS STA. TO STA.

F.A.I. RTE.	SECTION	COUNTY	TOTAL SHEETS	SHEET NO.
*	**	...	17	9
				CONTRACT NO. 70917
ILLINOIS FED. AID PROJECT				

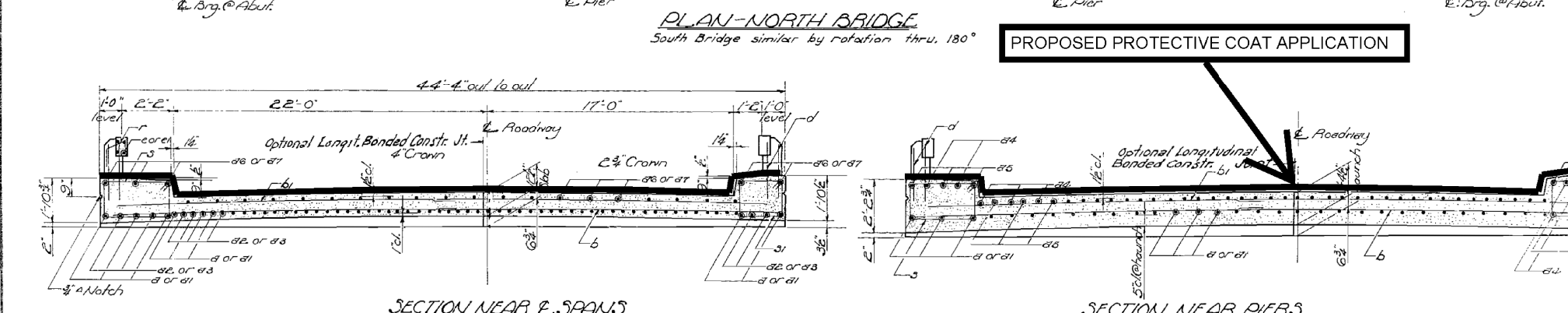
STATE OF ILLINOIS  
DEPARTMENT OF PUBLIC WORKS & BUILDINGS  
DIVISION OF HIGHWAYS

PROJECT NO.	SECTION	COUNTY	TOTAL SHEETS	SHEET NO.	SHEET NO. 2
F.A.I.R.T. 74-57-17B	MCLEAN	19	6	6	6 SHEETS
FED. AID DIST. NO. 7	ILLINOIS	FED. AID PROJECT			



BILL OF MATERIAL - P. BRIDGES

Bar	No.	Size	Length	Spaced
4	132	#10	22'-1"	
41	66	#10	33'-6"	
42	120	#10	22'-6"	
43	64	#10	22'-0"	
44	108	#11	11'-0"	
45	108	#11	21'-0"	
46	108	#5	15'-9"	
47	54	#5	14'-0"	
6	376	#5	22'-3"	
61	208	#5	21'-6"	
62	96	#6	23'-0"	
9	160	#5	9'-5"	
91	160	#5	7'-5"	
11	472	#5	3'-0"	
111	472	#5	4'-2"	
112	216	#5	2'-9"	
113	32	#5	25'-6"	
114	16	#5	31'-0"	
115	112	#5	2'-3"	
116	24	#4	3'-0"	
Class A Concrete		Cu. Yds.	334.1	
Handrail Concrete		Cu. Yds.	2.0	
Reinforcement Bars		Lbs.	22,830	
Structural Steel		Lbs.	20,040	
Name Plates		Each	2	



DESIGNED: Joseph W. Linn  
CHECKED: C. W. Shick  
DRAWN: R. W. Jacobs  
CHECKED: C. W. J.

APR 13 1961  
EXAMINED: W. E. Dammann  
PASSED: [Signature]  
APPROVED: R. H. Bailemeyer

TYPICAL SECTION; FOUR-LANE WITH CURB; DUAL STRUCTURES

Location	E. Brg. @ Abut. (1)	(2)	(3)	E. Pier-1	(4)	(5)	(6)	E. Pier-2	(7)	(8)	E. Brg. @ Abut.		
Theoretical Elevation	755.75	755.70	755.61	755.05	755.00	755.93	755.97	756.02	756.07	756.10	756.14	756.18	756.22
Theoretical E.I. + 4.0 Defl.	755.75	755.60	755.63	755.86	755.88	755.93	755.90	756.02	756.07	756.11	756.16	756.20	756.22

SUPERSTRUCTURE  
F.A.I.R.T. 74-57-17B  
MCLEAN COUNTY  
STA. 1512+64

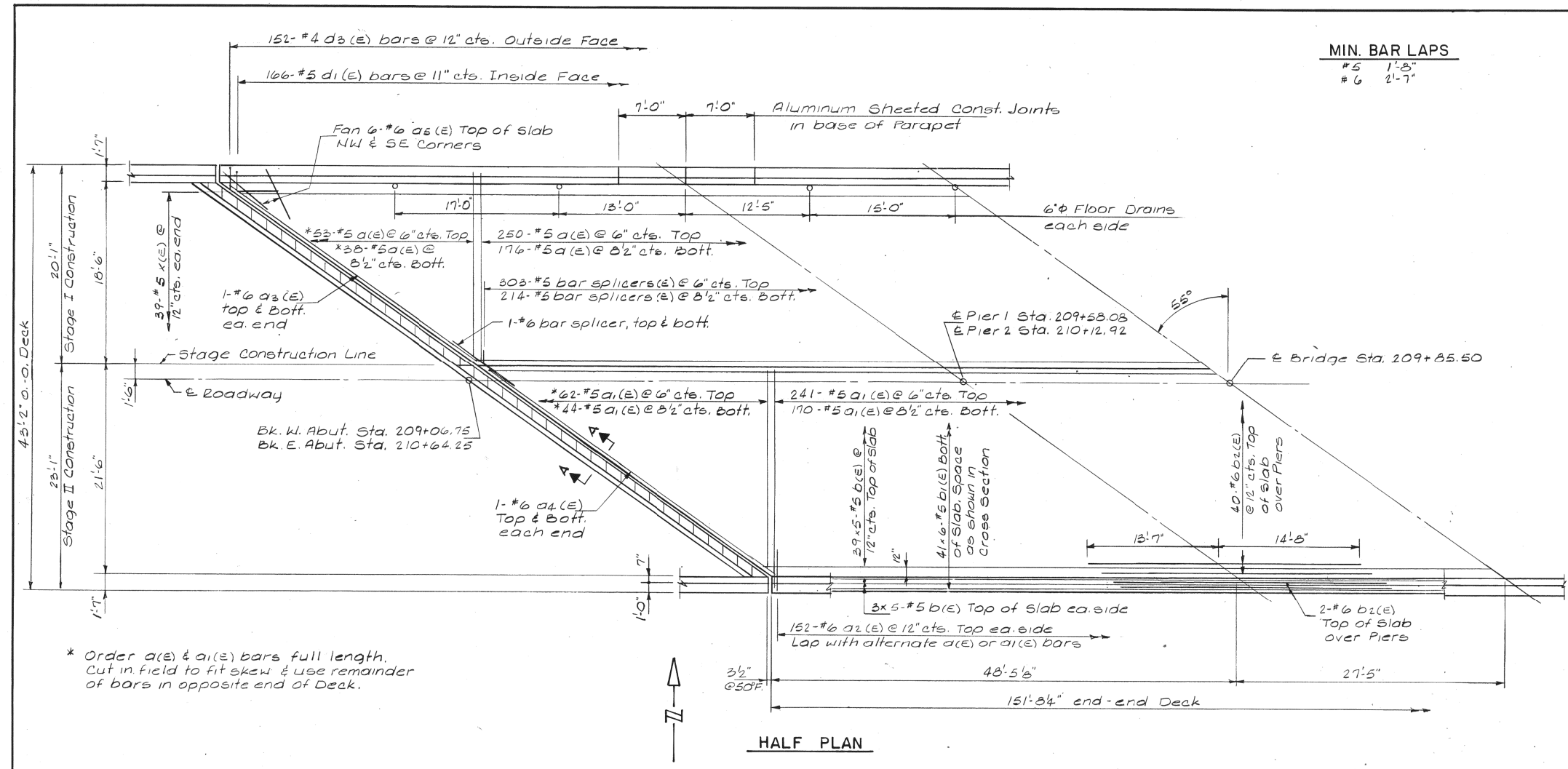
Added Long. Banded Concrete Joint. A.D. 12/12/63.

\* VARIOUS  
\*\* FY2012 BRIDGE DECK SEALING  
\*\*\* CHAMPAIGN, DEWITT, & MCLEAN



FAP RTE.	SECTION	COUNTY	TOTAL SHEETS	SHEET NO.
317	27 BR	McLEAN	49	29
STA.	TO STA.			
F.H.W.A. REG.	ILLINOIS			

Sheet 5 of 19



\* Order a(e) & a1(e) bars full length. Cut in field to fit skew & use remainder of bars in opposite end of Deck.

**MIN. BAR LAPS**

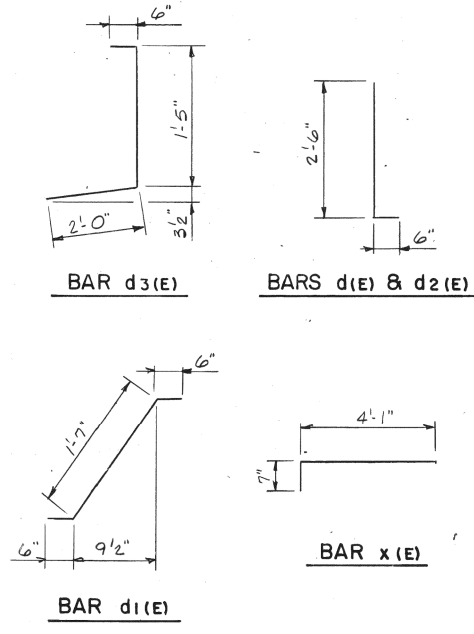
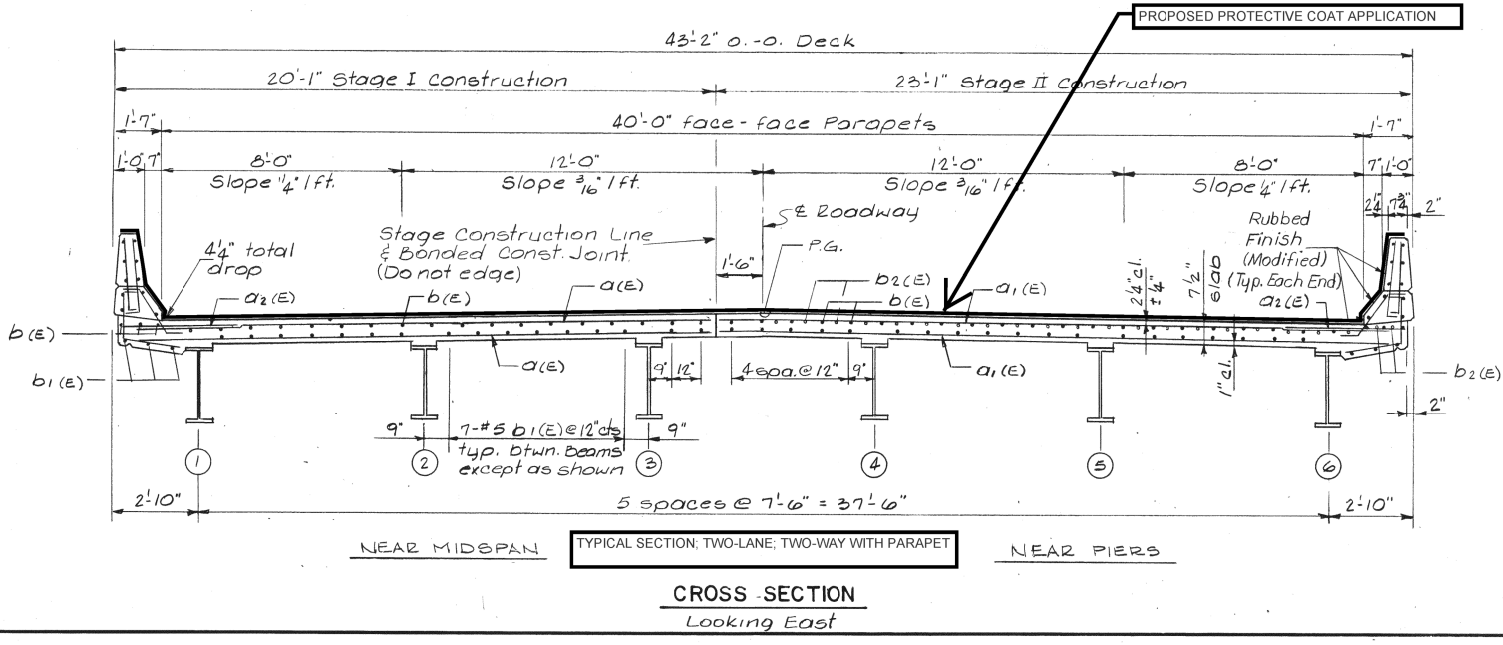
#5	1'-8"
#6	2'-7"

**SUPERSTRUCTURE BILL OF MATERIAL**

BAR	NO	SIZE	LENGTH	SHAPE
a1(E)	517	#5	19'-1"	
a1(E)	517	#5	22'-1"	
a2(E)	304	#6	4'-0"	
a3(E)	4	#6	36'-2"	
a4(E)	4	#6	37'-3"	
a5(E)	12	#6	6'-0"	
b(E)	225	#5	31'-3"	
b1(E)	246	#5	26'-5"	
b2(E)	83	#6	23'-3"	
d(E)	332	#5	3'-0"	
d1(E)	332	#5	2'-7"	
d2(E)	304	#4	3'-0"	
db(E)	304	#4	3'-11"	
c(E)	72	#4	13'-6"	
e1(E)	48	#4	6'-9"	
e2(E)	36	#4	13'-4"	
e3(E)	16	#3	22'-5"	
e4(E)	16	#3	6'-9"	
e5(E)	8	#3	22'-2"	
e6(E)	16	#5	21'-5"	
e7(E)	16	#5	6'-9"	
e8(E)	8	#5	21'-2"	
x(E)	78	#5	4'-5"	

Class X Concrete Superstructure	Cu.Yds.	200.4
Reinforcement Bars Epoxy Coated	Lbs.	49,820
Floor Drains	Each	14
Bar Splicers	Each	521



Notes: For Superstructure Details & Parapet Reinforcement see Sheet 6 of 19. Reinforcement bars designated (E) shall be epoxy coated. Bars indicated thus: 39 x 5-#5ets, indicates 39 lines of bars with 5 lengths per line. For Details of bar splicers see Sheet 17 of 19. Hatched areas to be poured after Superstructure forms have been removed. Quantity of concrete included with Class X Concrete Superstructure.

**SUPERSTRUCTURE**  
**BRIDGE OVER ROOKS CREEK**

FAP RTE. 317 (US 24)  
SECTION 27 BR  
McLEAN COUNTY  
STATION 209 + 85.50  
S.N. 057 - 0230

SCHEDULE OF QUANTITIES																							
ACTUAL MEASUREMENTS																							
SN	ROUTE CARRIED	FEATURE CROSSED	SIMS INFORMATION		DECK			APPROACH SLABS					PARAPETS (HUB, FACE & TOP)				TYPE B CURB (FACE & TOP)			GRAND TOTAL (SQ YD)	GRAND TOTAL (SQ FT)	RURAL	URBAN
			LENGTH	WDTH	LENGTH (E-E)	WIDTH (F-F)	TOTAL AREA (SY)	TOTAL LENGTH (FT)	LENGTH INSIDE PARAPET (FT)	WIDTH INSIDE PARAPET (FT)	LENGTH BEYOND PARAPET (FT)	WIDTH BEYOND PARAPET (O-O)	TOTAL AREA (SY)	HEIGHT 3.6 FT TYPICAL	LENGTH ALONG DECK (FT)	LENGTH ALONG APPR. (FT)	TOTAL AREA (SY)	HEIGHT 9 INCH TYPICAL	LENGTH ALONG APPR. PVT.				

CHAMPAIGN COUNTY STRUCTURES																									
010-0001	I-57(SB)	N&S RR	148.5	44.6	145.0	41.4	667.0	30.0	13.5	41.4	16.5	42.4	279.7	3.60	145.0	13.5	137.6	0.75	16.5	5.5	1090.0	9810.0	X		
010-0002	I-57(NB)	N&S RR	148.5	44.6	145.0	41.4	667.0	30.0	13.5	41.4	16.5	42.4	279.7	3.60	145.0	13.5	137.6	0.75	16.5	5.5	1090.0	9810.0	X		
010-0003	I-57(SB)	2 MILE SLOUGH	24.3	44.3	24.3	39.0	105.3	0.0	0	39.0	0.0	44.3	0.0	3.40	24.3	0.0	18.4	0.00	0.0	0.0	124.0	1116.0	X		
010-0004	I-57(NB)	2 MILE SLOUGH	24.3	44.3	24.3	39.0	105.3	0.0	0	39.0	0.0	44.3	0.0	3.40	24.3	0.0	18.4	0.00	0.0	0.0	124.0	1116.0	X		
010-0005	I-57(SB)	PHINNEY BRANCH	115.8	43.7	113.5	40.5	510.6	30.0	0	40.5	30.0	40.5	270.0	3.60	113.5	0.0	90.8	0.75	30.0	10.0	882.0	7938.0		X	
010-0006	I-57(NB)	PHINNEY BRANCH	115.8	43.7	113.5	40.5	510.6	30.0	0	40.5	30.0	40.5	270.0	3.60	113.5	0.0	90.8	0.75	30.0	10.0	882.0	7938.0		X	
010-0007	I-57(SB)	COPPER SLOUGH	99.8	43.7	97.5	40.5	438.6	30.0	13.5	40.5	16.5	40.5	270.0	3.60	97.5	13.5	99.6	0.75	16.5	5.5	814.0	7326.0		X	
010-0008	I-57(NB)	COPPER SLOUGH	99.8	43.7	97.5	40.5	438.6	30.0	13.5	40.5	16.5	40.5	270.0	3.60	97.5	13.5	99.6	0.75	16.5	5.5	814.0	7326.0		X	
010-0009	I-57(NB)	ILL 10 & IC RR	303.2	36.8	303.2	34.0	1145.4	20.0	0	0.0	20.0	5.2	46.2	3.60	303.2	0.0	242.6	0.75	20.0	6.7	1441.0	12969.0		X	
010-0012	I-57(SB)	US 136(FAP 709)	199.9	57.2	197.6	54.0	1185.4	30.0	0	0.0	30.0	55.0	366.7	3.60	197.6	0.0	158.1	0.75	30.0	10.0	1721.0	15489.0		X	
010-0013	I-57(NB)	US 136(FAP 709)	199.9	57.2	197.6	54.0	1185.4	30.0	0	0.0	30.0	55.0	366.7	3.60	197.6	0.0	158.1	0.75	30.0	10.0	1721.0	15489.0		X	
010-0191	I-57(NB)	IC RR	155.9	42.6	153.6	39.4	672.3	30.0	0	39.4	30.0	40.4	269.3	3.60	153.6	0.0	122.9	0.75	30.0	10.0	1075.0	9675.0	X		
010-0192	I-57(SB)	IC RR	155.9	42.6	153.6	39.4	672.3	30.0	0	39.4	30.0	40.4	269.3	3.60	153.6	0.0	122.9	0.75	30.0	10.0	1075.0	9675.0	X		
010-0198	I-57(NB)	FAP 804(US 45)	121.7	43.7	121.7	39.0	527.4	0.0	0	0.0	0.0	0.0	0.0	0.75	121.7	0.0	20.3	0.00	0.0	0.0	548.0	4932.0	X		
010-0199	I-57(SB)	US 45(FAS 1671)	121.7	44.0	121.7	39.0	527.4	0.0	0	0.0	0.0	0.0	0.0	0.75	121.7	0.0	20.3	0.00	0.0	0.0	548.0	4932.0	X		
010-0200	I-57(SB)	IC RR & TR 132	365.8	44.6	363.5	41.4	1672.0	30.0	13.5	41.4	16.5	41.4	276.0	3.60	363.5	13.5	312.4	0.75	16.5	5.5	2266.0	20394.0	X		
010-0201	I-57(NB)	IC RR & TR 132	365.8	44.6	363.5	35.4	1429.6	30.0	13.5	35.4	16.5	35.4	236.0	3.60	363.5	13.5	312.4	0.75	16.5	5.5	1984.0	17856.0	X		
<b>CHAMPAIGN TOTALS (SQ FT):</b>																							<b>163,791</b>	<b>89,316</b>	<b>74,475</b>

DEWITT COUNTY STRUCTURES																									
020-0005	US 51(SB)(FAP 322)	SALT CREEK	309.5	43.2	306.5	40.0	1362.2	30.0	11.5	40.0	18.5	24.0	200.9	3.60	306.5	11.5	263.6	0.75	0.5	0.2	1827.0	16443.0	X		
020-0020	IL 54 (FAP 71)	SALT CREEK	393.0	35.2	389.6	32.0	1385.2	20.0	0	32.0	20.0	33.2	147.6	3.60	389.6	0.0	311.7	0.75	20.0	6.7	1852.0	16668.0	X		
020-0048	US 51(SB)(FAP 322)	LONG POINT CREEK	153.0	43.2	149.8	40.0	665.8	30.0	16	40.0	14.0	24.0	216.9	3.60	149.8	16.0	145.4	0.75	14.0	4.7	1033.0	9297.0	X		
020-0049	US 51(NB)(FAP 322)	LONG POINT CREEK	153.0	43.2	149.8	40.0	665.8	30.0	16	40.0	14.0	24.0	216.9	3.60	149.8	16.0	145.4	0.75	14.0	4.7	1033.0	9297.0	X		
020-0050	US 51(SB)(FAP 322)	TEN MILE CREEK	98.0	43.2	94.3	40.0	419.1	30.0	12	39.0	18.0	24.0	200.0	3.60	94.3	12.0	94.6	0.75	0.0	0.0	714.0	6426.0	X		
020-0051	US 51(NB)(FAP 322)	TEN MILE CREEK	98.0	43.2	94.3	40.0	419.1	30.0	12	39.0	18.0	24.0	200.0	3.60	94.3	12.0	94.6	0.75	0.0	0.0	714.0	6426.0	X		
020-0052	US 51(NB)(FAP 322)	TEN MILE CREEK	191.2	43.2	187.8	40.0	834.7	30.0	12	39.0	18.0	24.0	200.0	3.60	187.8	12.0	169.4	0.75	0.0	0.0	1205.0	10845.0		X	
020-0053	US 51(SB)(FAP 322)	TEN MILE CREEK	191.2	43.2	187.8	40.0	834.7	30.0	12	39.0	18.0	24.0	200.0	3.60	187.8	12.0	169.4	0.75	0.0	0.0	1205.0	10845.0		X	
020-0054	US 51(BUSN)(FAP 708)	COON CREEK	95.3	43.2	91.6	40.0	407.1	20.0	15	40.0	5.0	24.0	160.0	3.60	91.6	15.0	97.3	0.75	0.0	0.0	665.0	5985.0		X	
020-0055	US 51(SB)(FAP 322)	COON CREEK	243.0	43.2	239.2	40.0	1063.1	30.0	12	39.0	18.0	24.0	200.0	3.60	239.2	12.0	210.6	0.75	0.0	0.0	1474.0	13266.0	X		
020-0056	US 51(NB)(FAP 322)	COON CREEK	243.0	43.2	239.2	40.0	1063.1	30.0	12	39.0	18.0	24.0	200.0	3.60	239.2	12.0	210.6	0.75	0.0	0.0	1474.0	13266.0	X		
020-0057	US 51(NB)(FAP 322)	SALT CREEK	300.0	43.2	296.5	40.0	1317.8	30.0	12	39.0	18.0	24.0	200.0	3.60	296.5	12.0	256.4	0.75	12.0	4.0	1779.0	16011.0	X		
020-0062	IL 10 (FAP 721)	SALT CREEK	188.0	35.2	188.0	32.0	668.4	30.0	0	32.0	30.0	32.8	218.7	3.60	188.0	0.0	150.4	0.75	30.0	5.0	1043.0	9387.0	X		
020-0063	IL 10 (FAP 717)	CREEK	160.0	35.2	160.0	32.0	568.9	30.0	0	32.0	30.0	32.8	218.7	3.60	160.0	0.0	128.0	0.75	30.0	10.0	926.0	8334.0		X	
020-2005	US 51(SB)(FAP 322)	TEN MILE CREEK	52.0	41.5	52.0	40.0	231.1	30.0	12	40.0	18.0	24.0	202.7	2.10	52.0	0.0	24.3	0.75	18.0	6.0	0.0	0.0	X		
020-2006	US 51(NB)(FAP 322)	TEN MILE CREEK	53.0	41.5	52.0	40.0	231.1	30.0	12	40.0	18.0	24.0	202.7	2.10	52.0	0.0	24.3	0.75	18.0	6.0	465.0	4185.0	X		
020-2010	IL 10 (FAP 721)	FRIENDS CREEK DITCH	25.0	34.7	25.0	32.0	88.9	30.0	30	32.0	0.0	24.0	213.3	2.10	25.0	0.0	11.7	0.75	30.0	10.0	324.0	2916.0	X		
<b>DEWITT TOTALS (SQ FT):</b>																							<b>159,597</b>	<b>123,588</b>	<b>36,009</b>

\* VARIOUS  
 \*\* FY2012 BRIDGE DECK SEALING  
 \*\*\* CHAMPAIGN, DEWITT, & MCLEAN

SCHEDULE OF QUANTITIES																											
ACTUAL MEASUREMENTS																											
SN	ROUTE CARRIED	FEATURE CROSSED	SIMS INFORMATION		DECK			APPROACH SLABS					PARAPETS (HUB, FACE & TOP)				TYPE B CURB (FACE & TOP)			GRAND TOTAL (SQ YD)	GRAND TOTAL (SQ FT)	RURAL	URBAN				
			LENGTH	WDTH	LENGTH (E-E)	WIDTH (F-F)	TOTAL AREA (SY)	TOTAL LENGTH (FT)	LENGTH INSIDE PARAPET (FT)	WIDTH INSIDE PARAPET (FT)	LENGTH BEYOND PARAPET (FT)	WIDTH BEYOND PARAPET (O-O)	TOTAL AREA (SY)	HEIGHT	LENGTH		TOTAL AREA (SY)	HEIGHT	LENGTH					TOTAL AREA (SY)			
														3.6 FT TYPICAL	ALONG DECK (FT)	ALONG APPR. (FT)		9 INCH TYPICAL	ALONG APPR. PVT.								

MCLEAN COUNTY STRUCTURES																										
057-0022	I-55 NW BLOOMINGTON	I-74	177.8	79.1	175.5	75.9	1479.8	30.0	30	75.9	0.0	79.1	506.0	3.60	175.5	30.0	188.4	0.75	0.0	0.0	2175.0	19575.0			X	
057-0023	I-55 NW BLOOMINGTON	I-74	177.8	68.0	175.5	64.8	1263.4	30.0	30	64.8	0.0	68.0	432.0	3.60	175.5	30.0	188.4	0.75	0.0	0.0	1884.0	16956.0			X	
057-0024	I-55 NB& CD#2284	US 51B N NORMAL	208.6	52.7	206.3	77.6	1778.5	30.0	30	77.6	0.0	52.7	517.3	3.60	206.3	30.0	213.0	0.75	0.0	0.0	2509.0	22581.0			X	
057-0025	I-55 SB & CD#2287	US 51B N NORMAL	208.6	52.7	206.3	118.8	2722.8	30.0	30	118.8	0.0	52.7	792.0	3.60	206.3	30.0	426.0	0.75	0.0	0.0	3941.0	35469.0			X	
057-0035	FAS 294/OLD 66A NB	MACKINAW RIVER	204.0	33.8	202.3	31.5	708.1	40.0	0	31.5	40.0	31.5	280.0	4.50	202.3	0.0	202.3	0.75	30.0	10.0	1201.0	10809.0	X			
057-0056	OLD US 51	KICKAPOO CREEK			0.0	0.0	0.0	0.0	0	0.0	0.0	0.0	0.0	3.60	0.0	0.0	0.0	0.75	0.0	0.0	0.0	0.0	0.0	X		
057-0063	I-55 BUSN LOOP	US 51AT BLOOMINGTON	167.0	59.5	163.7	56.0	1018.6	20.0	20	56.0	0.0	59.5	248.9	3.60	163.7	20.0	163.0	0.50	163.7	36.4	1467.0	13203.0			X	
057-0064	I-55 BUSN LOOP	CON-RAIL CORP. RR	306.0	59.5	303.2	56.0	1886.6	10.0	10	56.0	0.0	59.5	124.4	3.60	303.2	10.0	258.6	0.50	303.2	67.4	2337.0	21033.0			X	
057-0069	I-55 BUSN LOOP	OLD RT 66/ICG RR	442.0	86.9	436.9	83.7	4063.2	20.0	12	83.7	8.0	86.9	377.7	3.60	436.9	12.0	368.7	1.00	8.0	3.6	4814.0	43326.0			X	
057-0152	I-55 SB	US 24/FAP 317	187.0	46.6	184.7	43.4	890.5	30.0	0	43.4	30.0	45.0	300.0	3.60	184.7	0.0	147.7	0.75	30.0	10.0	1349.0	12141.0	X			
057-0153	I-55 NB	US 24/FAP 317	187.0	53.9	184.7	50.7	1040.3	30.0	0	50.7	30.0	52.2	348.0	3.60	184.7	0.0	147.7	0.75	30.0	10.0	1547.0	13923.0	X			
057-0154	I-55 SB	US 136/FAP 315	216.5	42.0	217.3	40.0	965.8	20.0	12	40.0	8.0	42.0	181.3	3.60	217.3	12.0	193.0	0.75	8.0	2.7	1343.0	12087.0	X			
057-0155	I-55 NB	US 136/FAP 315	216.5	41.8	214.2	40.0	951.9	20.0	12	40.0	8.0	41.8	181.0	3.60	214.2	12.0	190.5	0.75	8.0	2.7	1327.0	11943.0	X			
057-0157	I-55 SB	RAMPS & CH36	241.5	41.7	237.8	38.5	1017.3	20.0	12	38.5	8.0	40.0	173.8	3.60	237.8	12.0	209.4	0.75	8.0	2.7	1404.0	12636.0	X			
057-0158	I-55 NB	RAMPS & CH36	241.5	51.7	241.8	50.0	1343.3	20.0	12	50.0	8.0	51.5	224.9	3.60	241.8	12.0	212.6	0.75	8.0	2.7	1784.0	16056.0	X			
057-0159	I-55 SB	TIMBER CR	196.0	42.0	192.2	38.5	822.2	30.0	30	40.0	0.0	42.0	266.7	3.60	192.2	30.0	201.8	0.75	0.0	0.0	1291.0	11619.0	X			
057-0160	I-55 NB	TIMBER CR	196.0	42.0	192.2	38.5	822.2	30.0	30	40.0	0.0	42.0	266.7	3.60	192.2	30.0	201.8	0.75	0.0	0.0	1291.0	11619.0	X			
057-0163	I-55 SB	MONEY CREEK	193.0	41.8	191.5	38.5	819.2	30.0	0	38.5	0.0	41.8	0.0	3.60	191.5	0.0	153.2	0.75	0.0	0.0	973.0	8757.0	X			
057-0164	I-55 NB	MONEY CREEK	193.0	41.8	191.5	38.5	819.2	30.0	0	38.5	0.0	41.8	0.0	3.60	191.5	0.0	153.2	0.75	0.0	0.0	973.0	8757.0	X			
057-0167	I-55 SB	MACKINAW RIVER	333.0	41.8	330.7	38.5	1414.5	20.0	20	40.0	0.0	40.0	177.8	3.60	330.7	20.0	296.5	0.75	0.0	0.0	1889.0	17001.0	X			
057-0168	I-55 NB	MACKINAW RIVER	333.0	41.9	330.7	38.5	1414.5	20.0	20	40.0	0.0	40.0	177.8	3.60	330.7	20.0	296.5	0.75	0.0	0.0	1889.0	17001.0	X			
057-0169	I-55 SB	TURKEY CREEK	256.3	42.0	253.0	38.5	1082.3	30.0	12	38.5	18.0	42.0	270.7	3.60	253.0	12.0	221.6	0.75	0.0	0.0	1575.0	14175.0	X			
057-0170	I-55 NB	TURKEY CREEK	256.3	42.0	253.0	38.5	1082.3	30.0	12	38.5	18.0	42.0	270.7	3.60	253.0	12.0	221.6	0.75	0.0	0.0	1575.0	14175.0	X			
057-0173	I-55 SB	TURKEY CREEK	97.0	42.0	94.5	38.5	404.3	40.0	12	38.5	28.0	40.0	351.6	3.60	94.5	12.0	94.8	0.75	28.0	9.3	860.0	7740.0	X			
057-0174	I-55 NB	TURKEY CREEK	97.0	42.0	94.5	38.5	404.3	40.0	12	38.5	28.0	40.0	351.6	3.60	94.5	12.0	94.8	0.75	28.0	9.3	860.0	7740.0	X			
057-0178	I-55 SB	A.T. & S.F. RR	147.0	42.0	144.7	38.5	618.9	30.0	12	38.5	18.0	40.0	262.7	3.60	144.7	12.0	134.9	0.75	18.0	6.0	1023.0	9207.0	X			
057-0179	I-55 NB	A.T. & S.F. RR	147.0	42.0	144.7	38.5	618.9	30.0	12	38.5	18.0	40.0	262.7	3.60	144.7	12.0	134.9	0.75	18.0	6.0	1023.0	9207.0	X			
057-0182	I-55 SB	TURKEY CREEK	182.0	41.8	179.7	38.5	768.6	40.0	10	38.5	30.0	41.8	364.2	3.60	179.7	10.0	159.7	0.75	30.0	10.0	1303.0	11727.0	X			
057-0183	I-55 NB	TURKEY CREEK	182.0	41.9	179.7	38.5	768.6	40.0	10	38.5	30.0	41.9	364.9	3.60	179.7	10.0	159.7	0.75	30.0	10.0	1304.0	11736.0	X			
057-0196	US 51SB	KICKAPOO CREEK	288.5	43.2	286.2	40.0	1271.9	30.0	12	40.0	18.0	24.0	202.7	3.60	286.2	12.0	248.1	0.75	18.0	6.0	1729.0	15561.0	X			
057-0197	US 51NB	KICKAPOO CREEK	288.5	43.2	286.2	40.0	1271.9	30.0	12	40.0	18.0	24.0	202.7	3.60	286.2	12.0	248.1	0.75	18.0	6.0	1729.0	15561.0	X			
057-0198	FAP 412 US 51(SB)	US 136	173.7	43.1	171.4	40.0	761.6	10.0	0	40.0	10.0	41.2	91.6	3.60	171.4	0.0	137.1	0.75	10.0	3.3	994.0	8946.0	X			
057-0199	FAP 412 US 51(NB)	US 136	173.7	43.1	171.4	40.0	761.6	10.0	0	40.0	10.0	41.2	91.6	3.60	171.4	0.0	137.1	0.75	10.0	3.3	994.0	8946.0	X			
057-0203	I-39/US 51	MACKINAW RIVER	431.7	93.1	429.4	87.8	4188.7	30.0	12	87.8	18.0	91.0	598.1	3.60	429.4	244.0	733.9	0.00	18.0	0.0	5521.0	49689.0	X			
057-0205	I-39/US 51NB	FAS 472 CH 12	169.9	43.1	167.6	40.0	744.8	30.0	0	40.0	30.0	43.1	287.3	3.60	167.6	0.0	134.1	1.00	30.0	6.7	1173.0	10557.0	X			
057-0206	I-39/US 51SB	FAS 472 CH 12	169.8	43.1	167.5	40.0	744.3	30.0	0	40.0	30.0	43.1	287.3	3.60	167.5	0.0	134.0	1.00	30.0	6.7	1173.0	10557.0	X			

\* VARIOUS  
 \*\* FY2012 BRIDGE DECK SEALING  
 \*\*\* CHAMPAIGN, DEWITT, & MCLEAN

FILE NAME =	USER NAME = ppersonbr	DESIGNED -	REVISED -	<b>STATE OF ILLINOIS DEPARTMENT OF TRANSPORTATION</b>	<b>SCHEDULE OF QUANTITIES</b>	F.A.I. RTE.	SECTION	COUNTY	TOTAL SHEETS	SHEET NO.
et:\pw_work\p\pidot\personbr\d0286468\0570917-sh-t-schedule.dgn	DRAWN -	REVISED -				**	***	17	13	
PLOT SCALE = 40.0000' / in.	CHECKED -	REVISED -	CONTRACT NO. 70917							
PLOT DATE = 11/18/2011	DATE -	REVISED -	SCALE:			SHEET	OF	SHEETS	STA.	TO

SCHEDULE OF QUANTITIES																										
ACTUAL MEASUREMENTS																										
SN	ROUTE CARRIED	FEATURE CROSSED	SIMS INFORMATION		DECK			APPROACH SLABS					PARAPETS (HUB, FACE & TOP)				TYPE B CURB (FACE & TOP)			GRAND TOTAL (SQ YD)	GRAND TOTAL (SQ FT)	RURAL	URBAN			
			LENGTH	WDTH	LENGTH (E-E)	WIDTH (F-F)	TOTAL AREA (SY)	TOTAL LENGTH (FT)	LENGTH INSIDE PARAPET (FT)	WIDTH INSIDE PARAPET (FT)	LENGTH BEYOND PARAPET (FT)	WIDTH BEYOND PARAPET (O-O)	TOTAL AREA (SY)	HEIGHT	LENGTH		TOTAL AREA (SY)	HEIGHT	LENGTH					TOTAL AREA (SY)		
														3.6 FT TYPICAL	ALONG DECK (FT)	ALONG APPR. (FT)		9 INCH TYPICAL	ALONG APPR. PVT.							

MCLEAN COUNTY STRUCTURES																								
057-0208	I-39/US 51 SB	SIX MILE CREEK	149.8	43.1	147.5	40.0	655.4	30.0	30	40.0	0.0	43.1	266.7	3.60	147.5	0.0	118.0	1.00	0.0	0.0	1041.0	9369.0	X	
057-0209	I-39/US 51 NB	SIX MILE CREEK	149.8	43.1	147.5	40.0	655.4	30.0	30	40.0	0.0	43.1	266.7	3.60	147.5	0.0	118.0	1.00	0.0	0.0	1041.0	9369.0	X	
057-0210	I-39/US 51 SB	TRIB SIX MILE CREEK	70.6	43.1	68.3	40.0	303.4	30.0	30	40.0	0.0	43.1	266.7	3.60	68.3	0.0	54.6	1.00	30.0	13.3	639.0	5751.0	X	
057-0211	I-39/US 51 NB	TRIB SIX MILE CREEK	70.6	43.1	68.3	40.0	303.4	30.0	30	40.0	0.0	43.1	266.7	3.60	68.3	0.0	54.6	1.00	30.0	13.3	639.0	5751.0	X	
057-0214	I-39 RAMP 816 SB	I-55 & CD#2284/2287	272.9	29.3	270.6	26.0	781.6	30.0	12	26.0	18.0	29.3	186.5	3.60	270.6	0.0	216.5	1.00	12.0	5.3	1190.0	10710.0		X
057-0215	I-39 NB	I-55 & CD#2284/2287	274.7	43.3	272.4	40.0	1210.5	30.0	12	40.0	18.0	43.3	279.9	3.60	272.4	0.0	217.9	1.00	12.0	5.3	1714.0	15426.0		X
057-0216	I-39 SB	NORTHTOWN RD TR 201B	154.6	62.0	152.3	61.5	1040.5	30.0	12	61.5	18.0	64.7	422.8	3.60	152.3	0.0	121.8	1.00	12.0	5.3	1591.0	14319.0		X
057-0217	I-39 NB	NORTHTOWN RD TR 201B	154.0	43.1	151.7	40.0	674.1	30.0	12	40.0	18.0	43.1	279.1	3.60	151.7	0.0	121.3	1.00	12.0	5.3	1080.0	9720.0		X
057-0225	SBI-2 (OLD 51)	DITCH	43.1	35.1	42.9	32.0	152.5	20.0	0	32.0	20.0	33.2	147.6	3.60	42.9	0.0	34.3	0.75	20.0	6.7	342.0	3078.0	X	
057-0226	US 51	MACKINAW RIVER	433.7	35.2	428.8	32.0	1524.6	20.0	12	32.0	8.0	35.2	147.9	3.60	428.8	12.0	362.2	0.75	0.0	0.0	2035.0	18315.0	X	
057-0228	I-55 BUSN LP NB & SB	SUGAR CR & BIKE PATH	183.1	132.7	178.8	129.4	2570.7	30.0	12	129.4	18.0	132.7	875.9	3.60	178.8	12.0	162.2	0.75	18.0	6.0	3615.0	32535.0		X
057-0230	US 24/ FAP 317	ROOKS CREEK	157.5	43.1	151.8	40.0	674.7	30.0	12	40.0	18.0	41.2	271.5	3.60	151.8	12.0	140.6	0.75	18.0	6.0	1093.0	9837.0	X	
057-0237	I-55 NB	FAP 704	213.7	72.8	211.4	69.6	1634.6	30.0	12	69.6	18.0	70.8	468.8	3.60	211.4	12.0	188.3	0.75	18.0	6.0	2298.0	20682.0		X
057-0238	I-55 SB	FAP 704	215.3	64.9	213.0	61.7	1460.0	30.0	12	61.7	18.0	62.9	416.1	3.60	213.0	12.0	189.6	0.75	18.0	6.0	2072.0	18648.0		X
057-0239	FAU 6348/OLD RT66	MONEY CREEK	124.7	33.8	124.7	31.5	436.5	30.0	0	31.5	30.0	31.5	210.0	3.60	124.7	0.0	99.8	0.75	30.0	10.0	757.0	6813.0	X	

MCLEAN TOTALS (SQ FT):																					732,339	438,156	294,183
GRAND TOTALS (SQ FT):																					1,055,727	651,060	404,667

\* VARIOUS  
 \*\* FY2012 BRIDGE DECK SEALING  
 \*\*\* CHAMPAIGN, DEWITT, & MCLEAN

SCHEDULE OF QUANTITIES																		
RAILROAD COORDINATION										TRAFFIC CONTROL & PROTECTION					PROSECUTION & PROGRESS		RURAL	URBAN
OWNER	DOT/AAR NO.	MILE POST	FLAGGER REQUIRED	RRPLI REQUIRED	RIGHT OF ENTRY	STANDARD 701400	STANDARD 701406	STANDARD 701411 (DL ONLY)	STANDARD 701446	STANDARD 701201	LOCATION	SUMMARY	CHANGEABLE MESSAGE SIGN (Calendar Days)	ESTIMATED WORKING DAYS	PROSECUTION			
SN	ROUTE CARRIED	FEATURE CROSSED																

CHAMPAIGN COUNTY STRUCTURES																		
010-0001	I-57(SB)	N&S RR	NSRR	479 934 L	340.24	1	1		1	1								
010-0002	I-57(NB)	N&S RR	NSRR	479 934 L	340.24	1	1		1	1								
010-0003	I-57(SB)	2 MILE SLOUGH							1	1								
010-0004	I-57(NB)	2 MILE SLOUGH							1	1								
010-0005	I-57(SB)	PHINNEY BRANCH							1	1								
010-0006	I-57(NB)	PHINNEY BRANCH							1	1								
010-0007	I-57(SB)	COPPER SLOUGH							1	1								
010-0008	I-57(NB)	COPPER SLOUGH							1	1								
010-0009	I-57(NB)	ILL 10 & IC RR	ICRR	291 052 T	3.80	NO	1		INCL.	INCL.								
010-0012	I-57(SB)	US 136(FAP 709)							1	1								
010-0013	I-57(NB)	US 136(FAP 709)							1	1								
010-0191	I-57(NB)	IC RR	ICRR	289 246 Y	31.70	NO	1		1	1								
010-0192	I-57(SB)	IC RR	ICRR	289 246 Y	31.70	NO	1		1	1								
010-0198	I-57(NB)	FAP 804(US 45)							1	1								
010-0199	I-57(SB)	US 45(FAS 1671)							1	1								
010-0200	I-57(SB)	IC RR & TR 132	ICRR	289 105 P	142.80	NO	1		1	1								
010-0201	I-57(NB)	IC RR & TR 132	ICRR	289 105 P	142.80	NO	1		1	1								
TOTAL TC&P SET-UPS: LOCATIONS: CMS CALENDAR DAYS: ESTIMATED WORKING DAYS:						2	7	SEE SPECIALS	16	16	6	0	0	4	30	8		

DEWITT COUNTY STRUCTURES																					
020-0005	US 51(SB)(FAP 322)	SALT CREEK							INCL.	INCL.				DE6	COMBINED	SEE BELOW	INCLUDED	INCLUDED	X		
020-0020	IL 54 (FAP 71)	SALT CREEK												2	DE4	2-701201;1WD;1SN	N.A.	1	1 DAY	X	
020-0048	US 51(SB)(FAP 322)	LONG POINT CREEK							2	2					DE7	4-701400;4-701406	2-CMS (NB&SB)	2	1 DAY DL; NB&SB	X	
020-0049	US 51(NB)(FAP 322)	LONG POINT CREEK							2	2						2 WD'S; 2 SN'S	7 CD'S PRIOR		1 DAY PL; NB&SB	X	
020-0050	US 51(SB)(FAP 322)	TEN MILE CREEK							1	1						4 - 701400	6 WD'S			X	
020-0051	US 51(NB)(FAP 322)	TEN MILE CREEK							1	1						4 - 701406	13 CD'S PER DIR	4	2 DAY DL; NB&SB	X	
020-0052	US 51(NB)(FAP 322)	TEN MILE CREEK							1	1						4 WD'S	26 CAL DAYS		2 DAY PL; NB&SB		X
020-0053	US 51(SB)(FAP 322)	TEN MILE CREEK							1	1						9 STRUCTURES	11 SN'S / US 51				X
020-0054	US 51(BUSN)(FAP 708)	COON CREEK												2	DE3	2-701201;1WD;1SN	N.A.	1	1 DAY		X
020-0055	US 51(SB)(FAP 322)	COON CREEK							INCL.	INCL.						COMBINED; SEE				X	
020-0056	US 51(NB)(FAP 322)	COON CREEK							INCL.	INCL.						SN'S 0050 - 0053	SEE ABOVE	INCLUDED	INCLUDED	X	
020-0057	US 51(NB)(FAP 322)	SALT CREEK							INCL.	INCL.						INCLUDES 020-0005				X	
020-0062	IL 10 (FAP 721)	SALT CREEK												2	DE2	2-701201;1WD;1SN	N.A.	1	1 DAY	X	
020-0063	IL 10 (FAP 717)	CREEK												2	DE5	2-701201;1WD;1SN	N.A.	1	1 DAY		X
020-2005	US 51(SB)(FAP 322)	TEN MILE CREEK							N.A.	N.A.						COMBINED; SEE				X	
020-2006	US 51(NB)(FAP 322)	TEN MILE CREEK							INCL.	INCL.						SN'S 0050 - 0053	SEE ABOVE	INCLUDED	INCLUDED	X	
020-2010	IL 10 (FAP 721)	FRIENDS CREEK DITCH												2	DE1	2-701201;1WD;1SN	N.A.	1	1 DAY	X	
TOTAL TC&P SET-UPS: LOCATIONS: CMS CALENDAR DAYS: ESTIMATED WORKING DAYS:						0	0	SEE SPECIALS	8	8	0	0	10	7	26	11					

\* VARIOUS  
 \*\* FY2012 BRIDGE DECK SEALING  
 \*\*\* CHAMPAIGN, DEWITT, & MCLEAN

FILE NAME =	USER NAME = ppersonbr	DESIGNED -	REVISED -	<b>STATE OF ILLINOIS DEPARTMENT OF TRANSPORTATION</b>	<b>SCHEDULE OF QUANTITIES</b>	F.A.I. RTE.	SECTION	COUNTY	TOTAL SHEETS	SHEET NO.	
ei:\pwork\pwork\personbr\d0286468\050917-sht-schedule.dgn		DRAWN -	REVISED -			*	**	***	17	15	
PLOT SCALE = 40.0000' / in.		CHECKED -	REVISED -			CONTRACT NO. 70917					
PLOT DATE = 11/18/2011		DATE -	REVISED -			ILLINOIS FED. AID PROJECT					
SCALE:						SHEET	OF	SHEETS	STA.	TO	STA.

			SCHEDULE OF QUANTITIES																						
			RAILROAD COORDINATION					TRAFFIC CONTROL & PROTECTION					PROSECUTION & PROGRESS					RURAL	URBAN						
SN	ROUTE CARRIED	FEATURE CROSSED	OWNER	DOT/AAR NO.	MILE POST	FLAGGER REQUIRED	RRPLI REQUIRED	RIGHT OF ENTRY	STANDARD 701400	STANDARD 701406	STANDARD 701411 (DL ONLY)	STANDARD 701446	STANDARD 701201	LOCATION	SUMMARY	CHANGEABLE MESSAGE SIGN (Calendar Days)	ESTIMATED WORKING DAYS			PROSECUTION					
MCLEAN COUNTY STRUCTURES																									
057-0022	I-55 NW BLOOMINGTON	I-74							1		2	1			4 - 701400	INCLUDED WITH BELOW CMS COMPUTATIONS	4	NIGHTIME		X					
057-0023	I-55 NW BLOOMINGTON	I-74						1		2	1			4 - 701446								X			
057-0024	I-55 NB & CD#2284	US 51B N NORMAL						1		3	1			16 - 701411								X			
057-0025	I-55 SB & CD#2287	US 51B N NORMAL						1		3	1			4 WD'S; 6 SN'S								X			
057-0035	FAS 294/OLD 66A NB	MACKINAW RIVER											2	M12	2-701201;1WD;1SN	N.A.	1	1 DAY	X						
057-0056	OLD US 51	KICKAPOO CREEK											N.A.	M2	N.A.	N.A.	N.A.		X						
057-0063	I-55 BUSN LOOP	US 51AT BLOOMINGTON							2	2	2			M5	4-701400; 4-701406	2 - CMS PER LOCATION  7 CALENDAR DAYS PRIOR ONCE  34 WORKING DAYS  TOTAL 82 CALENDAR DAYS  46 MCLEAN COUNTY STRUCTURES ON VARIOUS ROUTES	2	NIGHTIME		X					
057-0064	I-55 BUSN LOOP	CON-RAIL CORP. RR	NSRR	475 033 A	373.90	1	1		2	2	1			M5	3-701411; 2WD; 2SN								X		
057-0069	I-55 BUSN LOOP	OLD RT 66/CG RR	UPRR	290 860 A	121.90	NO	1		4			4		M6	4-4004-4464WD2SN					4	NIGHTIME		X		
057-0152	I-55 SB	US 24/FAP 317							2	2	1			M13	4-701400; 4-701406					4	2 DAY DL; NB&SB	X			
057-0153	I-55 NB	US 24/FAP 317							2	2	2			M13	3-701411; 4WD; 2SN						2 DAY PL; NB&SB	X			
057-0154	I-55 SB	US 136/FAP 315							2	2	1			M3	4-701400; 4-701406					2	1 DAY DL; NB&SB	X			
057-0155	I-55 NB	US 136/FAP 315							2	2	1			M3	2-701411; 2WD; 2SN						1 DAY PL; NB&SB	X			
057-0157	I-55 SB	RAMPS & CH36							1	1				M4	4 - 701400					2	1 DAY DL; NB&SB 1 DAY PL; NB&SB	X			
057-0158	I-55 NB	RAMPS & CH36							1	1	2			M4	4 - 701406									X	
057-0159	I-55 SB	TIMBER CR							1	1				M4	2 - 701411									X	
057-0160	I-55 NB	TIMBER CR							1	1				M4	2 WD'S; 4 SN'S									X	
057-0163	I-55 SB	MONEY CREEK							2	2				M8	4-701400; 4-701406							2	1 DAY DL; NB&SB 1 DAY PL; NB&SB	X	
057-0164	I-55 NB	MONEY CREEK							2	2				M8	2WD'S; 2SN'S									X	
057-0167	I-55 SB	MACKINAW RIVER							1	1				M10	4 - 701400					2	1 DAY DL; NB&SB 1 DAY PL; NB&SB	X			
057-0168	I-55 NB	MACKINAW RIVER							1	1				M10	4 - 701406									X	
057-0169	I-55 SB	TURKEY CREEK							1	1				M10	2 WD'S; 4 SN'S									X	
057-0170	I-55 NB	TURKEY CREEK							1	1				M10										X	
057-0173	I-55 SB	TURKEY CREEK							INCL.	INCL.				M11	INCLUDED W/ 057-0182 & 0183					INCLUDED	INCLUDED	X			
057-0174	I-55 NB	TURKEY CREEK							INCL.	INCL.				M11					X						
057-0178	I-55 SB	A.T. & S.F. RR	TP&W RR	801 786 F	63.67	NO	1		INCL.	INCL.				M13	INCLUDED W/ 057-0152 & 0153		INCLUDED	INCLUDED	X						
057-0179	I-55 NB	A.T. & S.F. RR	TP&W RR	801 786 F	63.67	NO	1		INCL.	INCL.				M13					X						
057-0182	I-55 SB	TURKEY CREEK							2	2				M11	4-701400; 4-701406		2	1 DAY DL; NB&SB 1 DAY PL; NB&SB	X						
057-0183	I-55 NB	TURKEY CREEK							2	2				M11	2WD'S; 4SN'S						X				

\* VARIOUS  
\*\* FY2012 BRIDGE DECK SEALING  
\*\*\* CHAMPAIGN, DEWITT, & MCLEAN

FILE NAME =	USER NAME = ppersonbr	DESIGNED -	REVISED -	<b>STATE OF ILLINOIS DEPARTMENT OF TRANSPORTATION</b>	<b>SCHEDULE OF QUANTITIES</b>				F.A.I. RTE.	SECTION	COUNTY	TOTAL SHEETS	SHEET NO.
ci:\pw\work\p\personbr\d0286468\0570917-shit-schedule.dgn		DRAWN -	REVISED -		SCALE:	SHEET	OF	SHEETS	STA.	TO	STA.	17	16
		CHECKED -	REVISED -		CONTRACT NO. 70917								
		DATE -	REVISED -		ILLINOIS FED. AID PROJECT								



SCHEDULE OF QUANTITIES																		
			RAILROAD COORDINATION					TRAFFIC CONTROL & PROTECTION					PROSECUTION & PROGRESS		RURAL	URBAN		
SN	ROUTE CARRIED	FEATURE CROSSED	OWNER	DOT/AAR NO.	MILE POST	FLAGGER REQUIRED	RRPLI REQUIRED	RIGHT OF ENTRY	STANDARD 701400	STANDARD 701406	STANDARD 701411 (DL ONLY)	STANDARD 701446	STANDARD 701201	LOCATION			SUMMARY	CHANGEABLE MESSAGE SIGN (Calendar Days)

MCLEAN COUNTY STRUCTURES																					
057-0196	US 51 SB	KICKAPOO CREEK							1	1					M1	4 - 701400			X		
057-0197	US 51 NB	KICKAPOO CREEK							1	1	1				M1	4 - 701406		2	1 DAY DL; NB&SB	X	
057-0198	FAP 412 US 51(SB)	US 136							1	1	1				M1	3 - 701411		2	1 DAY PL; NB&SB	X	
057-0199	FAP 412 US 51(NB)	US 136							1	1	1				M1	2 WD'S; 4 SN'S		2	1 DAY PL; NB&SB	X	
057-0203	I-39/US 51	MACKINAW RIVER							4	4					M15	4-4004-4062WD1SN		2	1DL; 1PL; NB&SB	X	
057-0205	I-39/US 51 NB	FAS 472 CH 12							INCL.	INCL.	1				M17			4	2 DAY DL; NB&SB	X	
057-0206	I-39/US 51 SB	FAS 472 CH 12							INCL.	INCL.	2				M17	4 - 701400		4	2 DAY PL; NB&SB	X	
057-0208	I-39/US 51 SB	SIX MILE CREEK							1	1					M17	4 - 701406		4	2 DAY PL; NB&SB	X	
057-0209	I-39/US 51 NB	SIX MILE CREEK							1	1					M17	3 - 701411		4	2 DAY PL; NB&SB	X	
057-0210	I-39/US 51 SB	TRIB SIX MILE CREEK							1	1					M17	4 WD'S; 6 SN'S		4	2 DAY PL; NB&SB	X	
057-0211	I-39/US 51 NB	TRIB SIX MILE CREEK							1	1					M17			4	2 DAY PL; NB&SB	X	
057-0214	I-39 RAMP 816 SB	I-55& CD#2284/2287							1	1					M18			2	1 DAY DL; NB&SB		X
057-0215	I-39 NB	I-55 & CD#2284/2287							1	1					M18	4 - 701400		2	1 DAY DL; NB&SB		X
057-0216	I-39 SB	NORTHTOWN RD TR 201B							1	1					M18	4 - 701406		2	1 DAY PL; NB&SB		X
057-0217	I-39 NB	NORTHTOWN RD TR 201B							1	1					M18	2 WD'S; 4 SN'S		2	1 DAY PL; NB&SB		X
057-0225	SBI-2 (OLD 51)	DITCH											2	M2	2-701201;1WD;2SN	N.A.	1	1 DAY		X	
057-0226	US 51	MACKINAW RIVER											2	M16	2-701201;1WD;1SN	N.A.	1	1 DAY		X	
057-0228	I-55 BUSN LP NB & SB	SUGAR CR & BIKE PATH							INCL.			INCL.		M6	SEE SN 057-0069	INCLUDED	INCLUDED		NIGHTTIME		X
057-0230	US 24/ FAP 317	ROOKS CREEK											2	M14	2-701201;1WD;1SN	N.A.	1	1 DAY		X	
057-0237	I-55 NB	FAP 704							INCL.		3	INCL.		M7	INCLUDED W/	INCLUDED WITH ABOVE	INCLUDED		NIGHTTIME		X
057-0238	I-55 SB	FAP 704							INCL.		3	INCL.		M7	057-0022 thru 0025	INCLUDED WITH ABOVE	INCLUDED		NIGHTTIME		X
057-0239	FAU 6348/OLD RT66	MONEY CREEK											2	M9	2-701201;1WD;1SN	N.A.	1	1 DAY		X	

TOTAL TC&P SET-UPS; LOCATIONS; CMS CALENDAR DAYS; ESTIMATED WORKING DAYS:	1	4	SEE SPECIALS	52	44	32	8	10	18	82	39
---	---	---	--------------	----	----	----	---	----	----	----	----

GRAND TOTAL TC&P SET-UPS; LOCATIONS; CMS CALENDAR DAYS; ESTIMATED WORKING DAYS:	3	11	SEE SPECIALS	76	68	38	8	20	29	138	58
---	---	----	--------------	----	----	----	---	----	----	-----	----

NSRR & CSX by Agreement thus paid thru RR Coordinator; others paid via Article 109.04  
 Right-of-Entry; contractor should contact each RR per RRPLI Special Provision; \$750/per entry typical

Nightime Closures may require extended drying time and an application of sand may be necessary prior to opening to traffic. If required, the application of sand shall be paid for as described in the last paragraph of Article 503.19

\* VARIOUS  
 \*\* FY2012 BRIDGE DECK SEALING  
 \*\*\* CHAMPAIGN, DEWITT, & MCLEAN