

MEDIAN INLET BOX REMOVAL  
STA. 473+50.71 1 EACH  
(SEE SCHEDULE)

STA. 473+50.71  
EXISTING INLET BOX  
EXISTING 24" PIPE LT  
USFL 3' LT = 690.96  
DSFL 64' LT = 690.90

EXISTING RCP  
1 @ 36"x128'  
STA. 483+00.00  
US FL 67' RT = 688.17  
DS FL 70' LT = 688.05

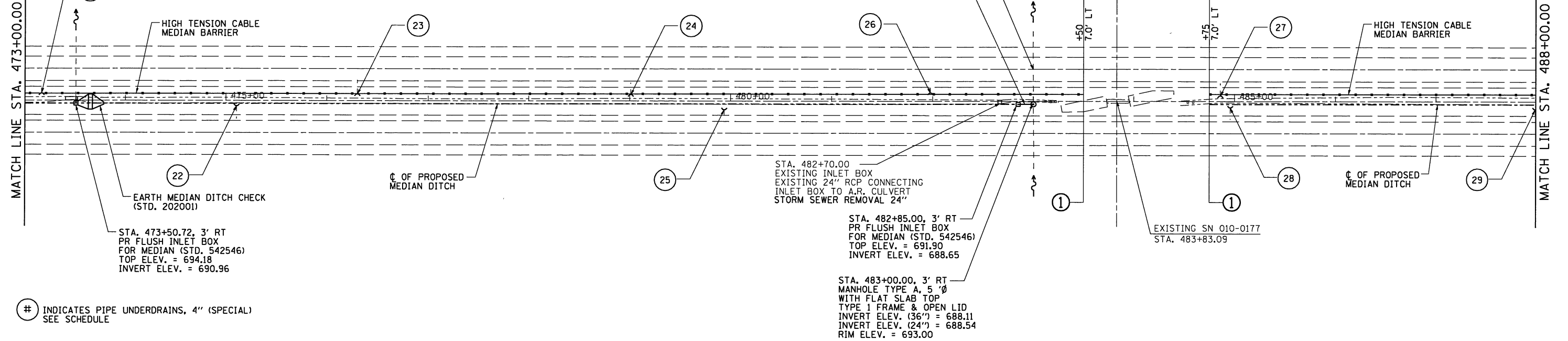
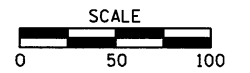
24" Ø SS CL A TY 1  
11' @ 1.00%

STA. 482+70.00  
EXISTING INLET BOX  
EXISTING 24" RCP CONNECTING  
INLET BOX TO A.R. CULVERT  
STORM SEWER REMOVAL 24"

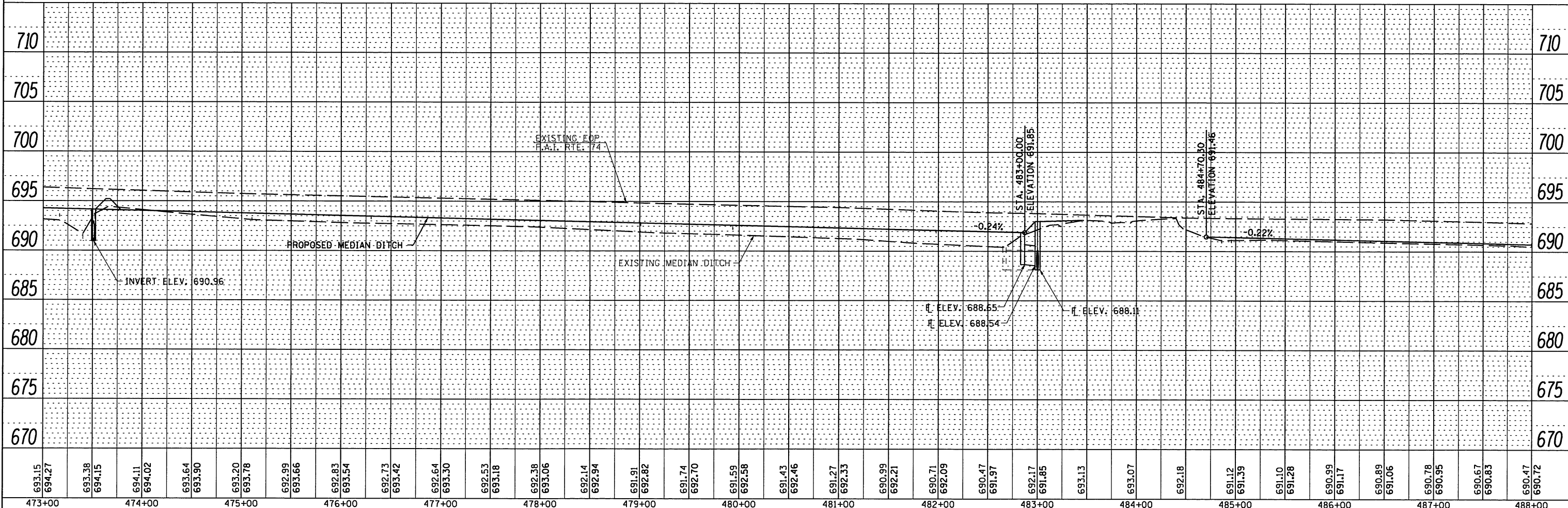
STA. 482+85.00, 3' RT  
PR FLUSH INLET BOX  
FOR MEDIAN (STD. 542546)  
TOP ELEV. = 691.90  
INVERT ELEV. = 688.65

STA. 483+00.00, 3' RT  
MANHOLE TYPE A, 5' Ø  
WITH FLAT SLAB TOP  
TYPE 1 FRAME & OPEN LID  
INVERT ELEV. (36") = 688.11  
INVERT ELEV. (24") = 688.54  
RIM ELEV. = 693.00

EXISTING SN 010-0177  
STA. 483+83.09



# INDICATES PIPE UNDERDRAINS, 4" (SPECIAL)  
SEE SCHEDULE



DATE	
BY	
REVISIONS	
NO.	
DATE	
BY	
REVISIONS	
NO.	
DATE	
BY	
REVISIONS	
NO.	

DATE	
BY	
REVISIONS	
NO.	
DATE	
BY	
REVISIONS	
NO.	
DATE	
BY	
REVISIONS	
NO.	

FILE NAME =	USER NAME = #USER*	DESIGNED -	REVISED -	<b>STATE OF ILLINOIS DEPARTMENT OF TRANSPORTATION</b>	<b>PLAN &amp; PROFILE F.A.I. 74</b>	F.A.I. RTE. 74	SECTION HSIP FY2012-1	COUNTY CHAMPAIGN	TOTAL SHEETS 160	SHEET NO. 12		
#FILEL#		DRAWN -	REVISED -			SCALE:	SHEET NO. 4 OF 23 SHEETS	CONTRACT NO. 70956	ILLINOIS FED. AID PROJECT			
		CHECKED -	REVISED -									
		DATE -	REVISED -									