

STA. 640+01.07
EXISTING INLET BOX
EXISTING 18" PIPE RT
USFL 8' RT = 679.66
DSFL 63' RT = 679.26

STA. 644+76.88
EXISTING INLET BOX
EXISTING 18" PIPE
USFL 1' RT = 676.71
STORM SEWER REMOVAL, 18"

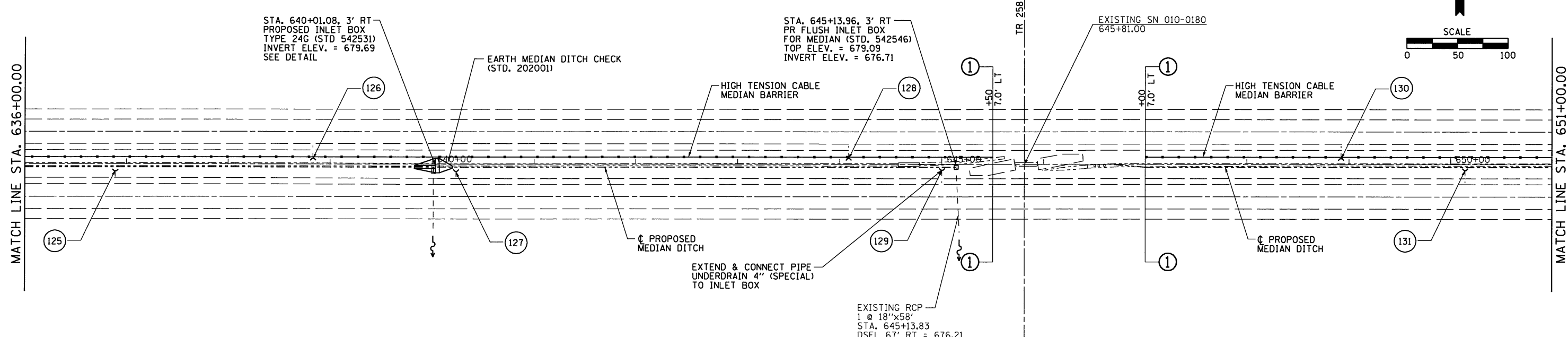
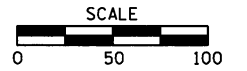
STA. 640+01.08, 3' RT
PROPOSED INLET BOX
TYPE 24G (STD 542531)
INVERT ELEV. = 679.69
SEE DETAIL

STA. 645+13.96, 3' RT
PR FLUSH INLET BOX
FOR MEDIAN (STD. 542546)
TOP ELEV. = 679.09
INVERT ELEV. = 676.71

EXISTING SN 010-0180
645+81.00

MATCH LINE STA. 636+00.00

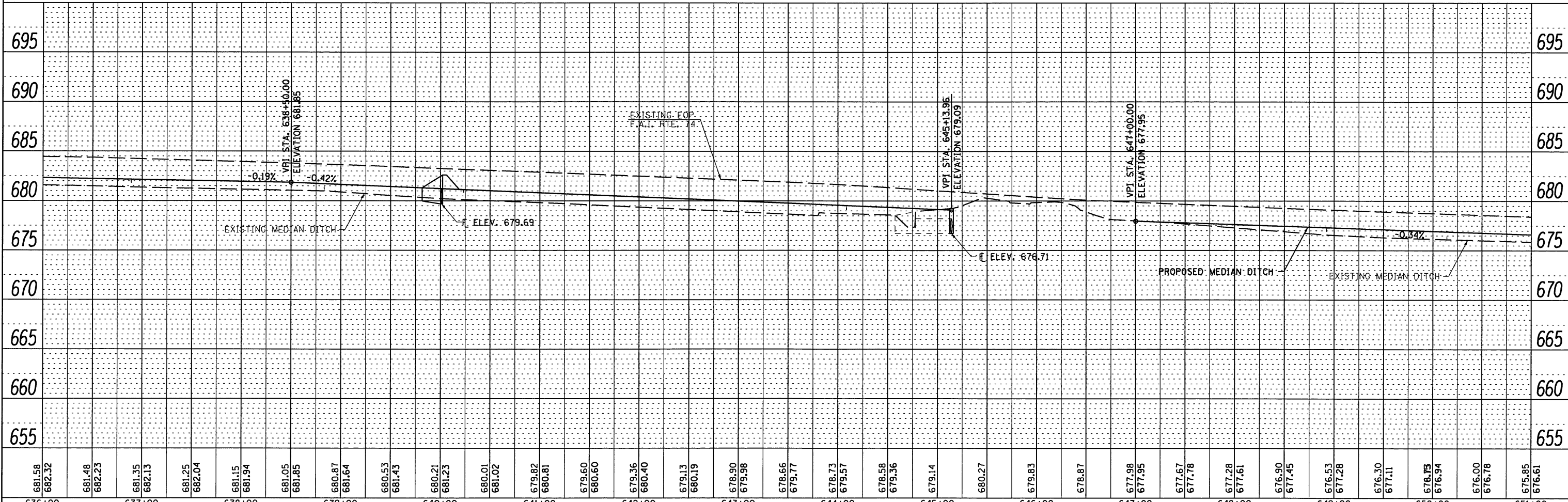
MATCH LINE STA. 651+00.00



INDICATES PIPE UNDERDRAINS, 4" (SPECIAL) SEE SCHEDULE

MEDIAN INLET BOX REMOVAL
STA. 640+01.07 1 EACH
(SEE SCHEDULE)

MEDIAN INLET BOX REMOVAL
STA. 644+76.88 1 EACH
(SEE SCHEDULE)



PLAN	DATE
BY	
REVISIONS	
NO.	
NOTE BOOK	
NO.	
ALIGNMENT CHECKED	
RT. OF WAY CHECKED	
FILE NAME	

PROFILE	DATE
BY	
REVISIONS	
NO.	
NOTE BOOK	
NO.	
GRADES CHECKED	
E.M. NOTED	
STRUCTURE NOTATIONS CHKD	

FILE NAME =	USER NAME = #USER#	DESIGNED -	REVISED -	<p align="center">STATE OF ILLINOIS DEPARTMENT OF TRANSPORTATION</p> <p align="center">PLAN & PROFILE F.A.I. 74</p>	F.A.I. RTE.	SECTION	COUNTY	TOTAL SHEETS	SHEET NO.
#FILE#		DRAWN -	REVISED -		74	HSIP FY2012-1	CHAMPAIGN	160	23
		CHECKED -	REVISED -		CONTRACT NO. 70956				
		DATE -	REVISED -		ILLINOIS FED. AID PROJECT				
SCALE:				SHEET NO. 15 OF 23 SHEETS	STA. 636+00 TO STA. 651+00				