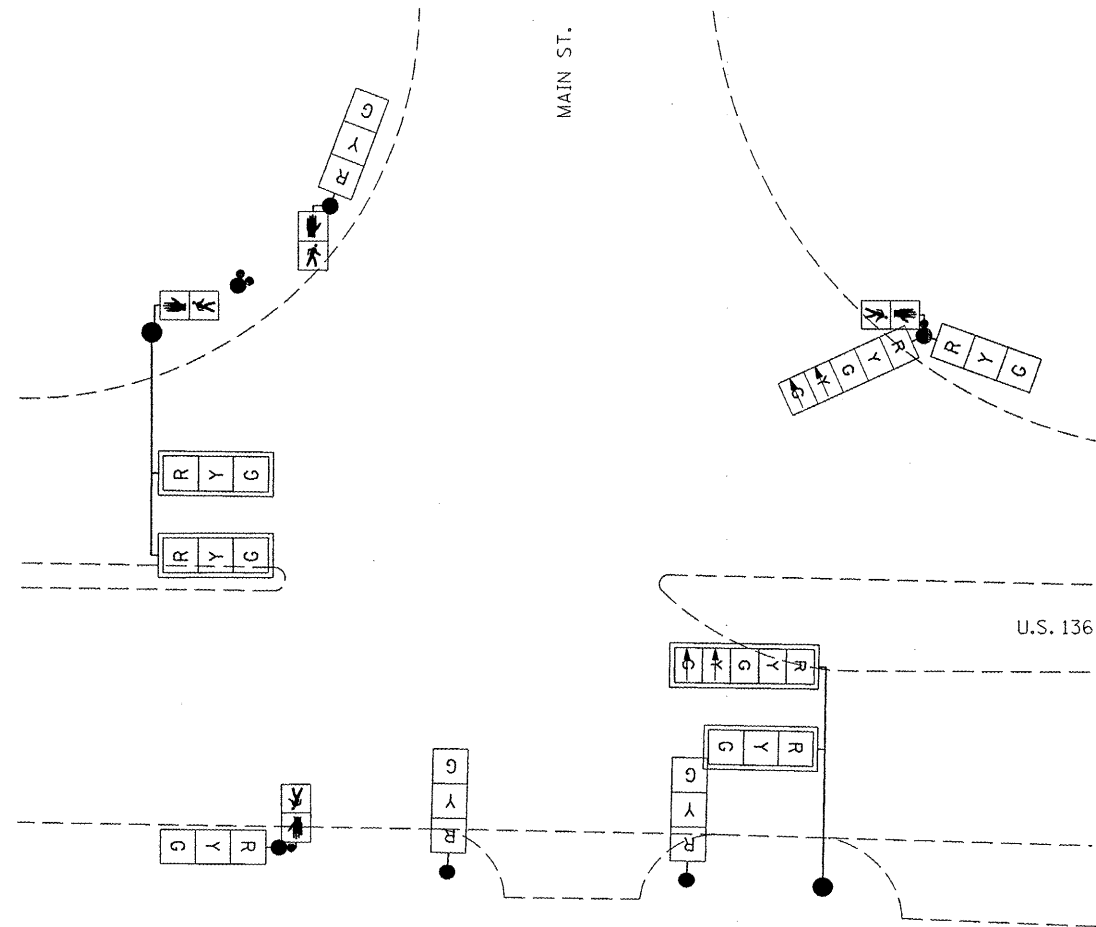


U.S. 136 & MAIN ST.

LOCATION 1



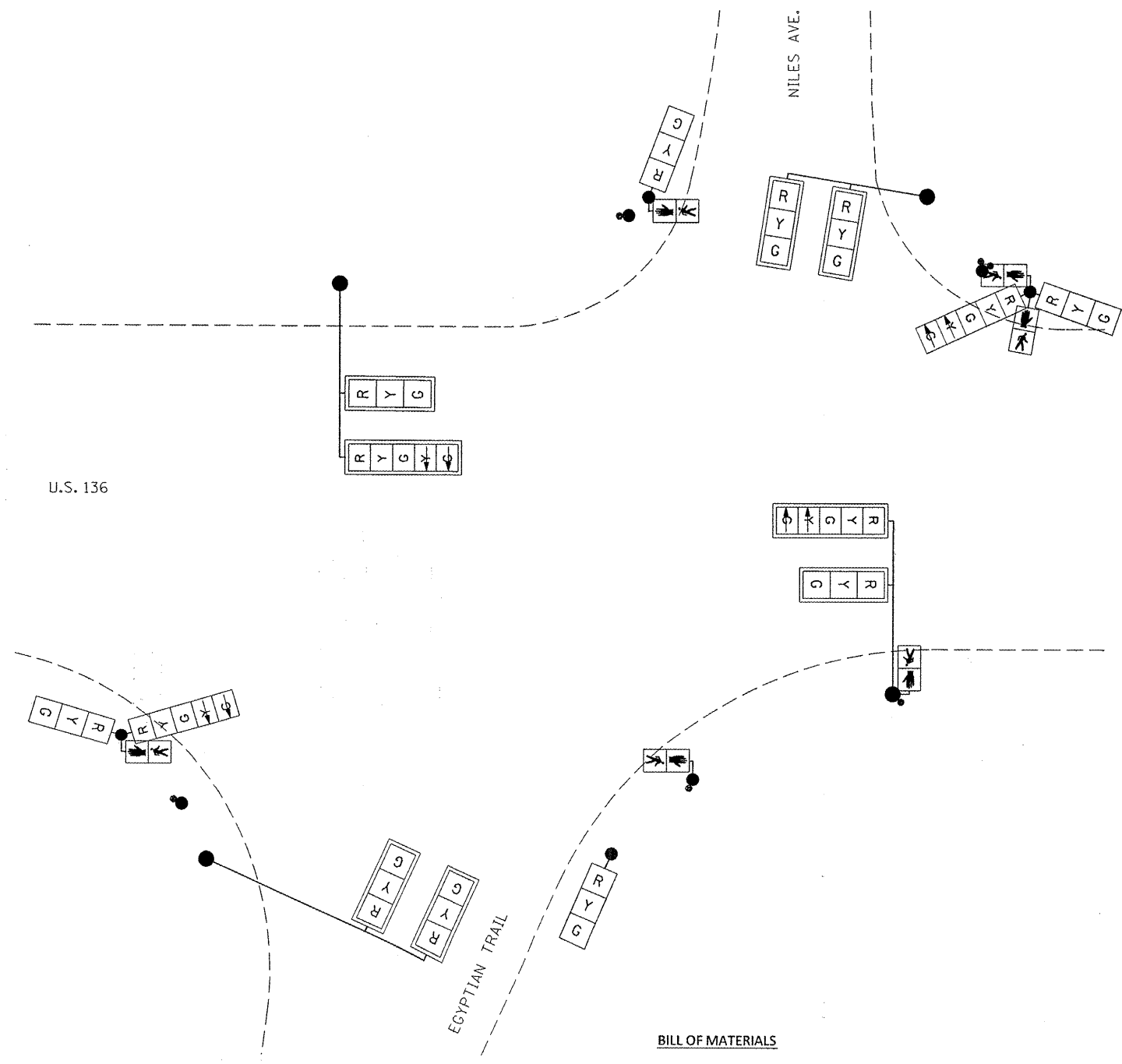
BILL OF MATERIALS

U.S. 36 & MAIN ST.
(LOCATION 1)

ITEM	UNIT	QUANTITY
SIGNAL HEAD, LED, 2-FACE, 1-3 SECTION, 1-5 SECTION, BRACKET MOUNTED, RETROFIT	EACH	1
SIGNAL HEAD, LED, 1-FACE, 3-SECTION, BRACKET MOUNTED, RETROFIT	EACH	4
SIGNAL HEAD, LED, 1-FACE, 3-SECTION, MAST ARM MOUNTED, RETROFIT	EACH	3
SIGNAL HEAD, LED, 1-FACE, 5-SECTION, MAST ARM MOUNTED, RETROFIT	EACH	1
PEDESTRIAN SIGNAL HEAD, LED, 1-FACE, BRACKET MOUNTED WITH COUNTDOWN TIMER	EACH	4

U.S. 136 & EGYPTIAN TRAIL / NILES AVE.

LOCATION 2



BILL OF MATERIALS

U.S. 36 & EGYPTIAN TRAIL / NILES AVE.
LOCATION 2

ITEM	UNIT	QUANTITY
SIGNAL HEAD, LED, 2-FACE, 1-3 SECTION, 1-5 SECTION, BRACKET MOUNTED, RETROFIT	EACH	2
SIGNAL HEAD, LED, 1-FACE, 3-SECTION, BRACKET MOUNTED, RETROFIT	EACH	2
SIGNAL HEAD, LED, 1-FACE, 3-SECTION, MAST ARM MOUNTED, RETROFIT	EACH	6
SIGNAL HEAD, LED, 1-FACE, 5-SECTION, MAST ARM MOUNTED, RETROFIT	EACH	2
PEDESTRIAN SIGNAL HEAD, LED, 1-FACE, BRACKET MOUNTED WITH COUNTDOWN TIMER	EACH	6

FILE NAME =	USER NAME = biggsrd	DESIGNED -	REVISED -
e:\pwwork\puidot\biggsrd\0289275\sign	ls.dgn	DRAWN -	REVISED -
PLOT SCALE = 48.0000' / 1"	CHECKED -	REVISED -	REVISED -
PLOT DATE = 12/16/2011	DATE -	REVISED -	REVISED -

STATE OF ILLINOIS
DEPARTMENT OF TRANSPORTATION

SCALE: SHEET OF SHEETS STA. TO STA.

F.A.P. RTE.	SECTION	COUNTY	TOTAL SHEETS	SHEET NO.
VAR.	*	**	11	7
CONTRACT NO. 70962				

ILLINOIS FED. AID PROJECT
* LED RETROFIT AND UPS 2012-1
** MCLEAN, DOUGLAS