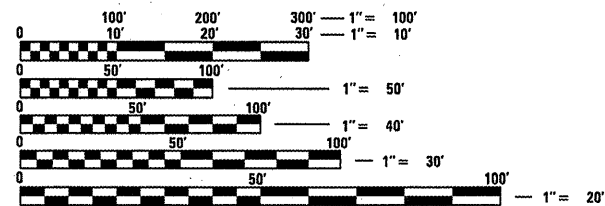


INDEX OF SHEETS

- 1 COVER SHEET
- 2 GENERAL NOTES
- 3-7 SUMMARY OF QUANTITIES
- 8-9 TYPICAL SECTIONS
- 10 BUTT-JOINT DETAILS
- 11-12 ENTRANCE AND SIDEROAD DETAILS
- 13 SUPERELEVATION TRANSITION
DETAIL FOR TWO LANE HIGHWAY
- 14-21 SCHEDULE OF QUANTITIES
- 22-42 PLAN SHEETS
- 43 PAVEMENT MARKING PLAN
- 44 INLET AND GUTTER DETAIL
- 45-48 STORM WATER POLLUTION PREVENTION PLAN
- 49-52 CROSS SECTIONS STA. 408+50 TO STA. 415+00
- 53-62 CROSS SECTIONS STA. 217+00 TO STA. 236+00
- 63-69 CROSS SECTIONS STA. 273+00 TO STA. 289+00

STANDARDS

000001-06	701201-04
280001-06	701301-04
424001-06	701306-03
442201-03	701311-03
602301-03	701501-06
604041-02	701801-05
606101-04	701901-02
701001-02	780001-03
701006-03	781001-03



FULL SIZE PLANS HAVE BEEN PREPARED USING STANDARD ENGINEERING SCALES. REDUCED SIZED PLANS WILL NOT CONFORM TO STANDARD SCALES. IN MAKING MEASUREMENTS ON REDUCED PLANS, THE ABOVE SCALES MAY BE USED.

J.U.L.I.E.
JOINT UTILITY LOCATION INFORMATION FOR EXCAVATION
1-800-892-0123
OR 811

SENIOR TEAM ENGINEER: MARK DUST 217-785-0597

TEAM MANAGER: KEN ANDERSON 217-524-7546

CONTRACT NO. 72E48

STATE OF ILLINOIS
DEPARTMENT OF TRANSPORTATION
DIVISION OF HIGHWAYS

**PROPOSED
HIGHWAY PLANS**

FAP ROUTE 608 (IL-111)
SECTION 120RS-2 & 121RS-4
RESURFACING
MACOUPIN COUNTY

C-96-079-11
PROJECT ACF-0608(022)

STATION EQUATION:
STA. 412+11.99 BK=
STA. 413+06.13 AH

STATION EQUATION:
STA. 426+67.40 BK=
STA. 200+00.00 AH

STATION EQUATION:
STA. 220+77.48 BK=
STA. 220+89.40 AH

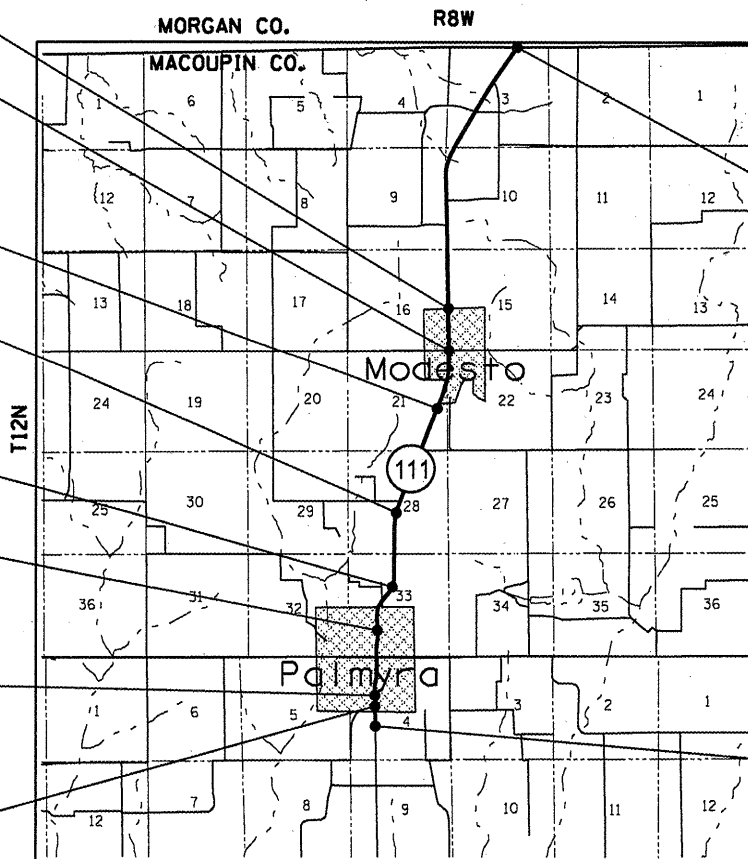
STATION EQUATION:
STA. 303+40.84 BK=
STA. 303+64.20 AH

STATION EQUATION:
STA. 333+15.40 BK=
STA. 333+78.00 AH

STATION EQUATION:
STA. 346+35.96 BK=
STA. 346+83.52 AH

STATION EQUATION:
STA. 379+76.66 BK=
STA. 379+78.40 AH

STATION EQUATION:
STA. 383+01.86 BK=
STA. 383+06.90 AH



IMPROVEMENT BEGINS
STA. 258+05.00



IMPROVEMENT ENDS
STA. 392+97.00

LOCATION MAP

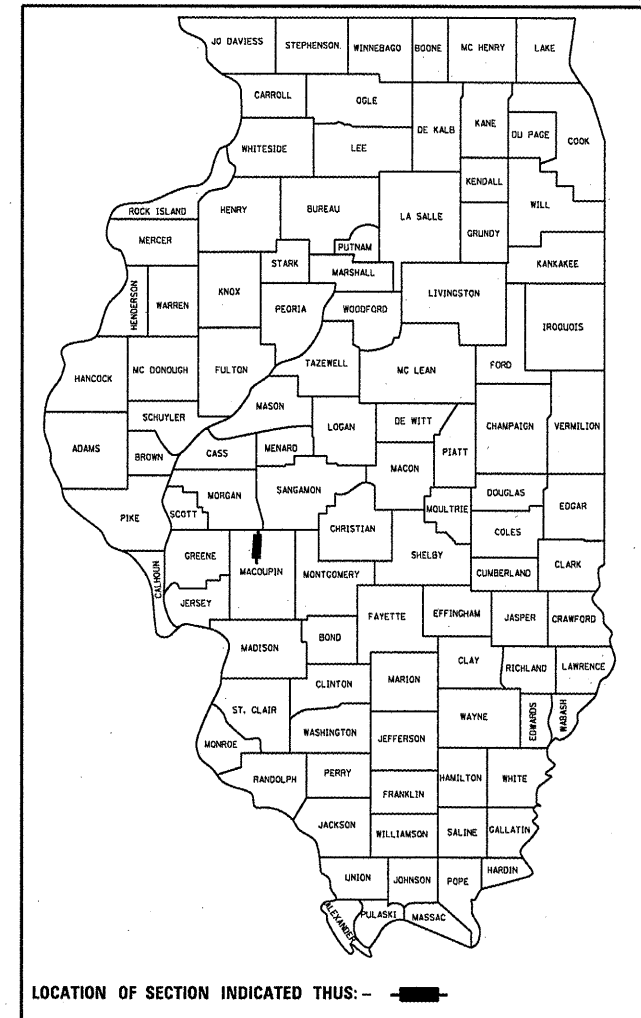
GROSS LENGTH = 35,913.04 FT. = 6.802 MILE
NET LENGTH = 35,913.04 FT. = 6.802 MILE

TRAFFIC COUNT

ADT = 1300 (2009)
PV = 1177 (90.5%)
SU = 74 (5.7%)
MU = 49 (3.8%)

F.A.P. RTE.	SECTION	COUNTY	TOTAL SHEETS	SHEET NO.
608	120 RS-2 & 121 RS-4	MACOUPIN	69	1
		ILLINOIS	CONTRACT NO. 72E48	

D-96-079-11



LOCATION OF SECTION INDICATED THIS: —

HIGHWAY CLASSIFICATION: MINOR ARTERIAL

STATE OF ILLINOIS
DEPARTMENT OF TRANSPORTATION
DIVISION OF HIGHWAYS

SUBMITTED December 22 20 11
Rosa Z. Smith
DEPUTY DIRECTOR OF HIGHWAYS, REGION ENGINEER
Feb 3 20 12
John D. Baranzelli, P.E. Ia
acting ENGINEER OF DESIGN AND ENVIRONMENT
Feb 3 20 12
William B. Fiebig, Ia
acting DIRECTOR OF HIGHWAYS, CHIEF ENGINEER

PRINTED BY THE AUTHORITY
OF THE STATE OF ILLINOIS