

03-09-12 LETTING ITEM 083

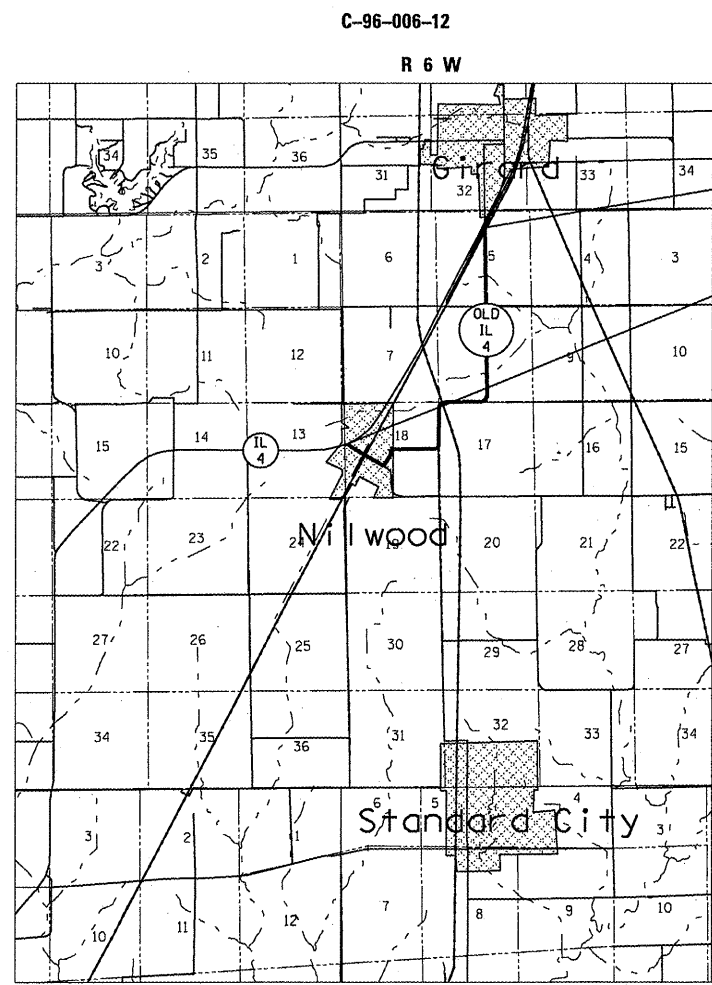
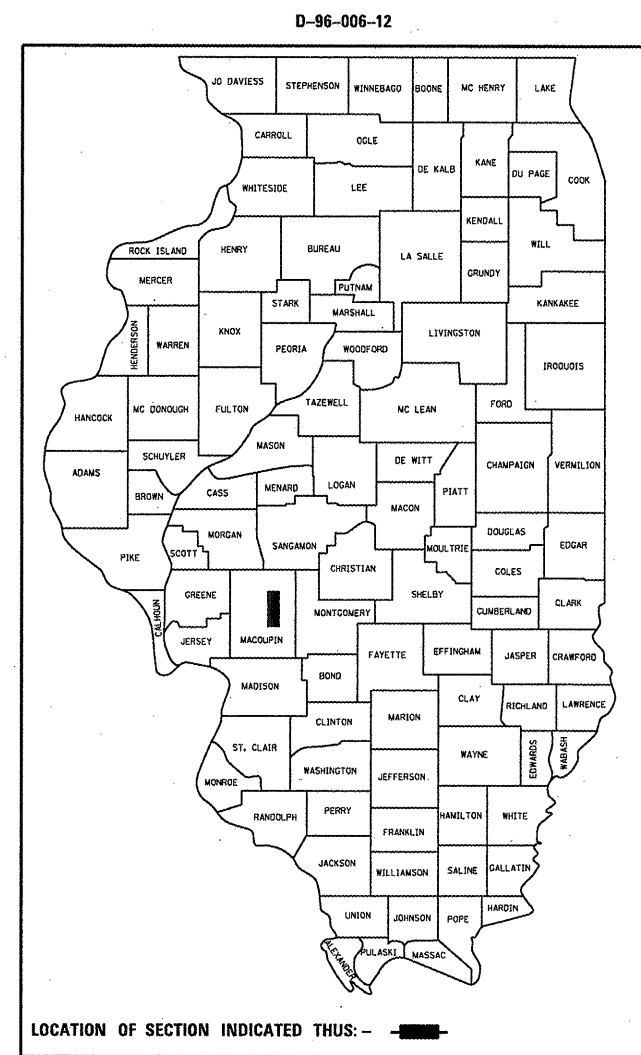
STATE OF ILLINOIS
DEPARTMENT OF TRANSPORTATION
DIVISION OF HIGHWAYS
**PROPOSED
CONTRACT MAINTENANCE**

FOR INDEX OF SHEETS, SEE SHEET NO. 2

FAS 733 (OLD IL 4)
SECTION (E)RS, I-1

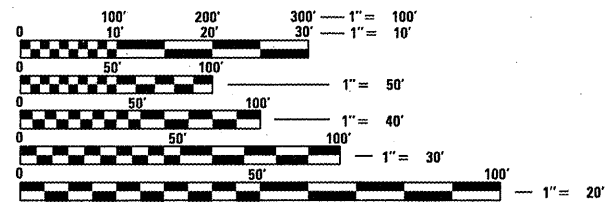
MACOUPIN COUNTY

F.A.S. RTE.	SECTION	COUNTY	TOTAL SHEETS	SHEET NO.
733	(E)RS, I-1	MACOUPIN	5	1
FED. ROAD DIST. NO.	ILLINOIS	CONTRACT NO. 72E69		



BEGIN PROJECT
STA. 1529 + 18.80

END PROJECT
STA. 1742 + 50.00



FULL SIZE PLANS HAVE BEEN PREPARED USING STANDARD ENGINEERING SCALES. REDUCED SIZED PLANS WILL NOT CONFORM TO STANDARD SCALES. IN MAKING MEASUREMENTS ON REDUCED PLANS, THE ABOVE SCALES MAY BE USED.

J.U.L.I.E.
JOINT UTILITY LOCATION INFORMATION FOR EXCAVATION
1-800-892-0123
OR 811

PLAN AND CONTRACT TECHNICIAN
TIMOTHY SHARP (217)782-7743

CONTRACT NO. 72E69

GROSS LENGTH = 21,331.20 FT. = 4.040 MILE

STATE OF ILLINOIS
DEPARTMENT OF TRANSPORTATION
DIVISION OF HIGHWAYS

SUBMITTED December 29 20 11
Roger Z. [Signature]
DEPUTY DIRECTOR OF HIGHWAYS, REGION ENGINEER

Feb 3 20 12
John D. Baranzelli, P.E., [Signature]
acting ENGINEER OF DESIGN AND ENVIRONMENT

Feb 3 20 12
William R. [Signature]
acting DIRECTOR OF HIGHWAYS, CHIEF ENGINEER

**PRINTED BY THE AUTHORITY
OF THE STATE OF ILLINOIS**

INDEX

- 1 COVER
- 2 INDEX/STANDARDS/SIGNATURES
- 3 QUANTITIES
- 4 LOCATION MAP
- 5 TYPICAL SECTIONS

STANDARDS

- 442201-03
- 701001-02
- 701006-03
- 701201-04
- 701301-04
- 701311-03
- 701501-06
- 701901-02
- 701304-03

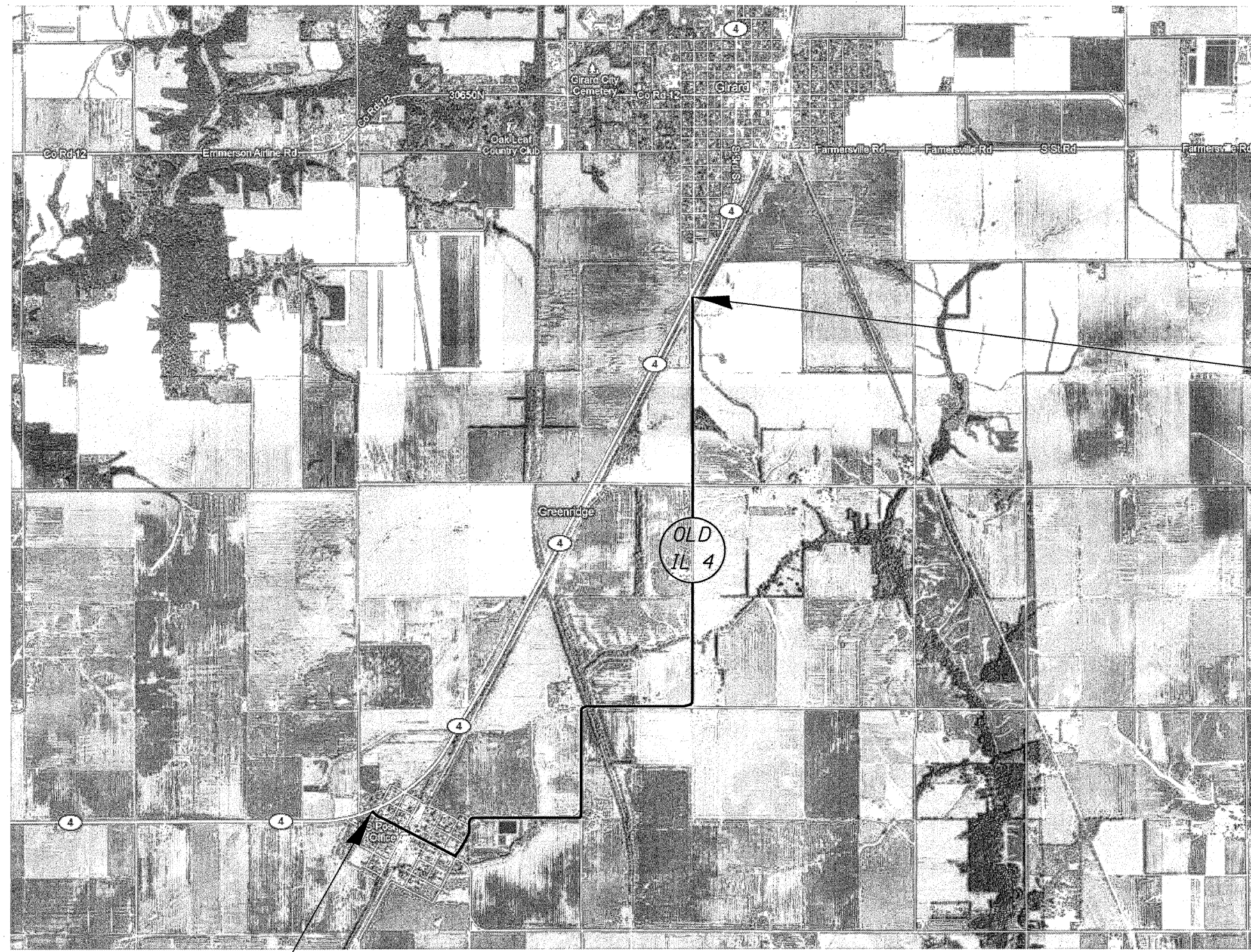
STATE OF ILLINOIS DEPARTMENT OF TRANSPORTATION DIVISION OF HIGHWAYS DISTRICT 6	
EXAMINED <u>Nov 13</u> 20 <u>11</u>	<u>Bill Brown</u> ENGINEER OF OPERATIONS
EXAMINED <u>Nov 30</u> 20 <u>11</u>	<u>Forney F. ...</u> ENGINEER OF PROJECT IMPLEMENTATION
EXAMINED <u>December 2</u> 20 <u>11</u>	<u>ARMY</u> ENGINEER OF PROGRAM DEVELOPMENT

INDEX/STANDARDS/SIGNATURES
FAS 733 (OLD IL 4)
SECTION (E)RS, I-1
MACOUPIN COUNTY

S U M M A R Y O F Q U A N T I T I E S

CODE NO.	ITEM	UNIT	100% STATE
			0004
			TOTAL QTY
44201325	CLASS C PATCHES, TYPE I, 8"	SQ YD	100
44201329	CLASS C PATCHES, TYPE II, 8"	SQ YD	900
44201333	CLASS C PATCHES, TYPE III, 8"	SQ YD	700
44201335	CLASS C PATCHES, TYPE IV, 8"	SQ YD	500
48101200	AGGREGATE SHOULDERS, TYPE B	TON	82
67100100	MOBILIZATION	L SUM	1
70100450	TRAFFIC CONTROL AND PROTECTION, STANDARD 701201	L SUM	1
70100460	TRAFFIC CONTROL AND PROTECTION, STANDARD 701306	L SUM	1
70102620	TRAFFIC CONTROL AND PROTECTION, STANDARD 701501	L SUM	1

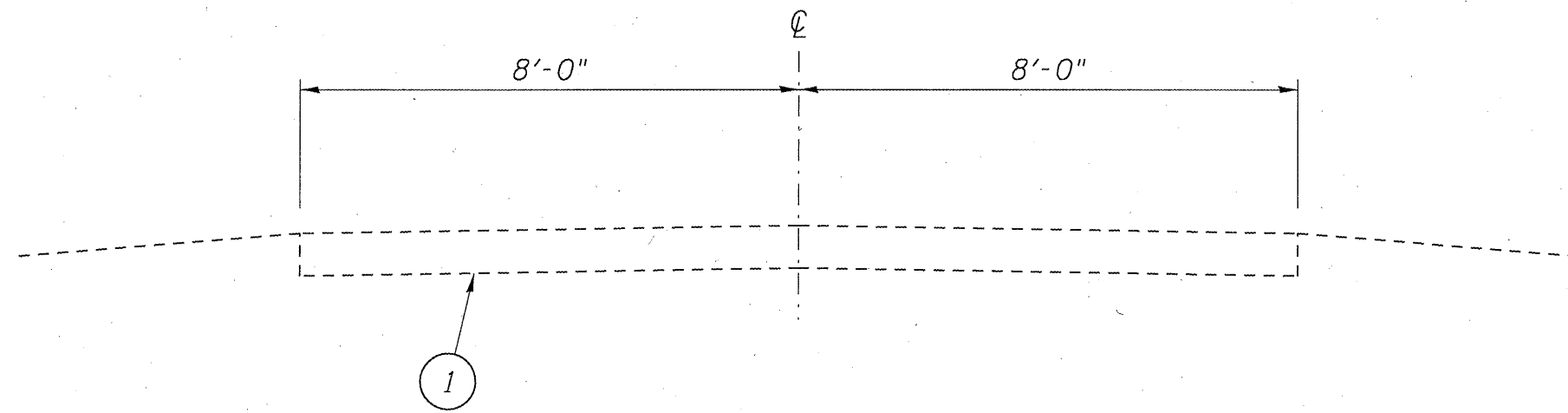
QUANTITIES
FAS 733
SECTION (E)RS, I-1
MACOUPIN COUNTY



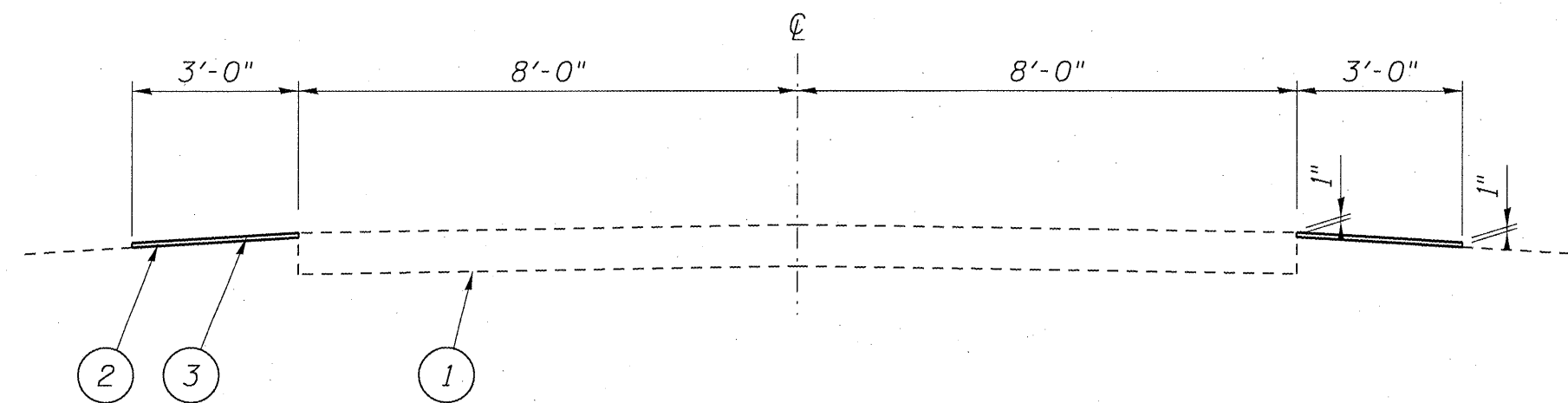
BEGIN PROJECT
STA. 1529+18.80

END PROJECT
STA. 1742+50.00

PLAN
FAS 733 (OLD IL 4)
SECTION (E)RS, I-1
MACOUPIN COUNTY



STA. 1529+18.80 TO 1720+86.00



STA. 1720+86.00 TO 1742+50.00

LEGEND

- 1- EXIST. P.C.C. PAVEMENT 8"
- 2- EXIST. AGGREGATE SHOULDERS
- 3- PROP. AGGREGATE SHOULDERS, TYPE B

TYPICALS
FAS 733 (OLD IL 4)
SECTION (E)RS, I-1
MACOUPIN COUNTY