

STATE OF ILLINOIS
DEPARTMENT OF TRANSPORTATION
DIVISION OF HIGHWAYS

**PROPOSED
HIGHWAY PLANS**

FAP ROUTE 610 (MACARTHUR BLVD.)
SECTION (G)I-4

TYPE of IMPROVEMENT
SANGAMON COUNTY

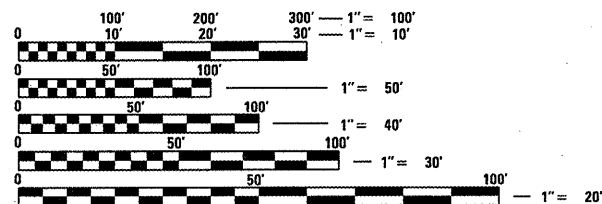
C-96-008-12

F.A.P. RTE.	SECTION	COUNTY	TOTAL SHEETS	SHEET NO.
610	(G)I-4	SANGAMON	24	1
		ILLINOIS	CONTRACT NO. 72FOO	

FOR INDEX OF SHEETS, SEE SHEET NO. 2

HIGHWAY STANDARDS

- 000001-06
- 606001-04
- 630001-10
- 701101-02
- 701106-02
- 701427
- 701601-07
- 701901-02
- 780001-03
- 781001-03

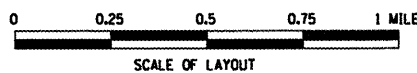
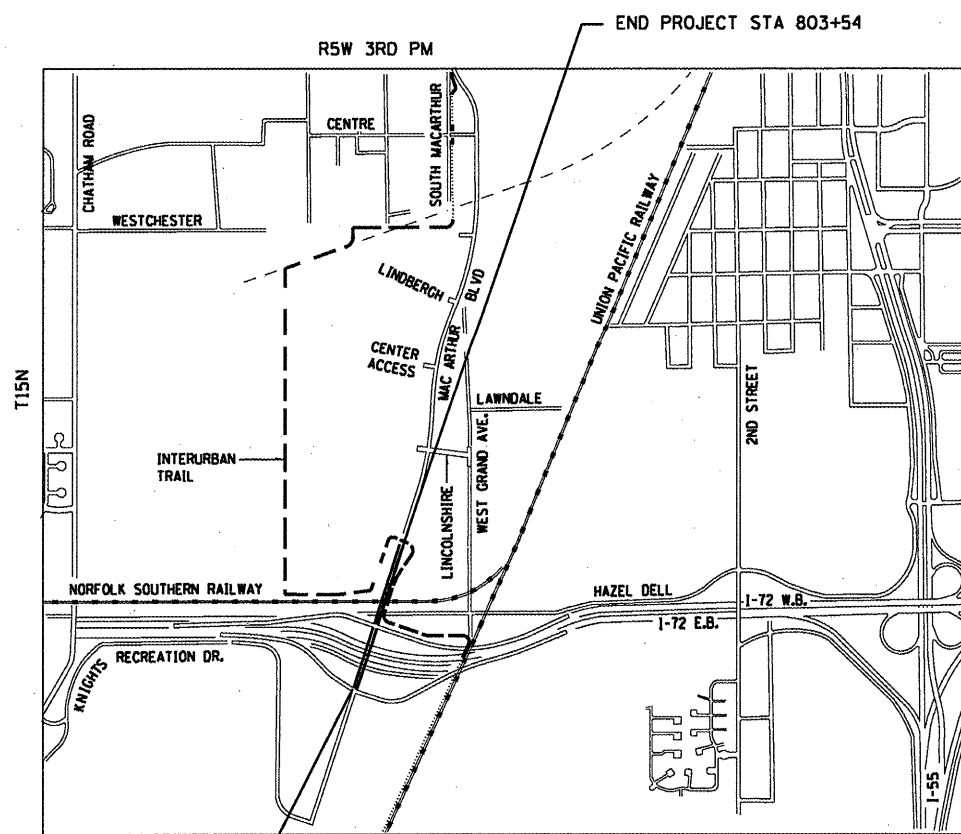


FULL SIZE PLANS HAVE BEEN PREPARED USING STANDARD ENGINEERING SCALES. REDUCED SIZED PLANS WILL NOT CONFORM TO STANDARD SCALES. IN MAKING MEASUREMENTS ON REDUCED PLANS, THE ABOVE SCALES MAY BE USED.

J.U.L.I.E.
JOINT UTILITY LOCATION INFORMATION FOR EXCAVATION
1-800-892-0123
OR 811

PROJECT ENGINEER: JEFF MYERS 217-782-4761
TEAM ENGINEER: ED KERN 217-524-7547

CONTRACT NO. 72FOO



GROSS LENGTH = 1,334 FT. = 0.25 MILE
NET LENGTH = 1,334 FT. = 0.25 MILE



LOCATION OF SECTION INDICATED THUS: —■—

STATE OF ILLINOIS
DEPARTMENT OF TRANSPORTATION
DIVISION OF HIGHWAYS

SUBMITTED December 21, 2011
Roger Z. Dondos
DEPUTY DIRECTOR OF HIGHWAYS, REGION ENGINEER

Feb 3, 2012
John D. Baranzelli, P.E.
ENGINEER OF DESIGN AND ENVIRONMENT

Feb 3, 2012
William R. Frey, Jr.
DIRECTOR OF HIGHWAYS, CHIEF ENGINEER

**PRINTED BY THE AUTHORITY
OF THE STATE OF ILLINOIS**

CODE NO.	ITEM	UNIT	TOTAL QUANTITY	CONSTRUCTION CODE
				100% STATE ROADWAY 0005 URBAN
40600200	BITUMINOUS MATERIALS (PRIME COAT)	TON	1.3	1.3
40600837	POLYMERIZED LEVELING BINDER (MACHINE METHOD), N70	TON	20	20
40600990	TEMPORARY RAMP	SO YD	598	598
40603540	POLYMERIZED HOT-MIX ASPHALT SURFACE COURSE, MIX "D", N70	TON	451.7	451.7
44000500	COMBINATION CURB AND GUTTER REMOVAL	FOOT	547	547
44213200	SAW CUTS	FOOT	120	120
54248510	CONCRETE COLLAR	CU YD	4	4
60100080	FRENCH DRAINS	CU YD	12	12
60604400	COMBINATION CONCRETE CURB AND GUTTER, TYPE B-6.18	FOOT	395	395
60605000	COMBINATION CONCRETE CURB AND GUTTER, TYPE B-6.24	FOOT	152	152
63300900	VERTICAL ADJUSTMENT OF GUARDRAIL	FOOT	565	565
67100100	MOBILIZATION	L SUM	1	1.0
X 78100100	RAISED REFLECTIVE PAVEMENT MARKER	EACH	15	15
78300100	PAVEMENT MARKING REMOVAL	SO FT	705	705

CODE NO.	ITEM	UNIT	TOTAL QUANTITY	CONSTRUCTION CODE
				100% STATE ROADWAY 0005 URBAN
78300200	RAISED REFLECTIVE PAVEMENT MARKER REMOVAL	EACH	15	15
Z0012500	CONCRETE CURB REPAIR	FOOT	29	29
X0325088	PLACEMENT OF CEMENT GROUT	CU FT	1,476	1,476
X4401198	HOT-MIX ASPHALT SURFACE REMOVAL, VARIABLE DEPTH	SO YD	3,304	3,304
X6026800	INLET TO BE RECONSTRUCTED (SPECIAL)	EACH	8	8
X7010228	TRAFFIC CONTROL AND PROTECTION, STANDARD 701601, SPECIAL	L SUM	1	1
X 7800605	URETHANE PAVEMENT MARKING - LETTERS AND SYMBOLS	SO FT	94	94
X 7800620	URETHANE PAVEMENT MARKING - LINE 5"	FOOT	3,832	3,832
X 7800630	URETHANE PAVEMENT MARKING - LINE 6"	FOOT	246	246
X8780105	CONCRETE FOUNDATIONS (SPECIAL)	EACH	5	5

X SPECIALTY ITEM

FILE NAME =	USER NAME = sparksgu	DESIGNED -	REVISED -
c:\pw\work\p\idot\sparksgu\d0280145\067	F00-shr-500.dgn	DRAWN -	REVISED -
	PLOT SCALE = 100.0000 / / in.	CHECKED -	REVISED -
	PLOT DATE = Dec-21-2011 02:57:04PM	DATE -	REVISED -

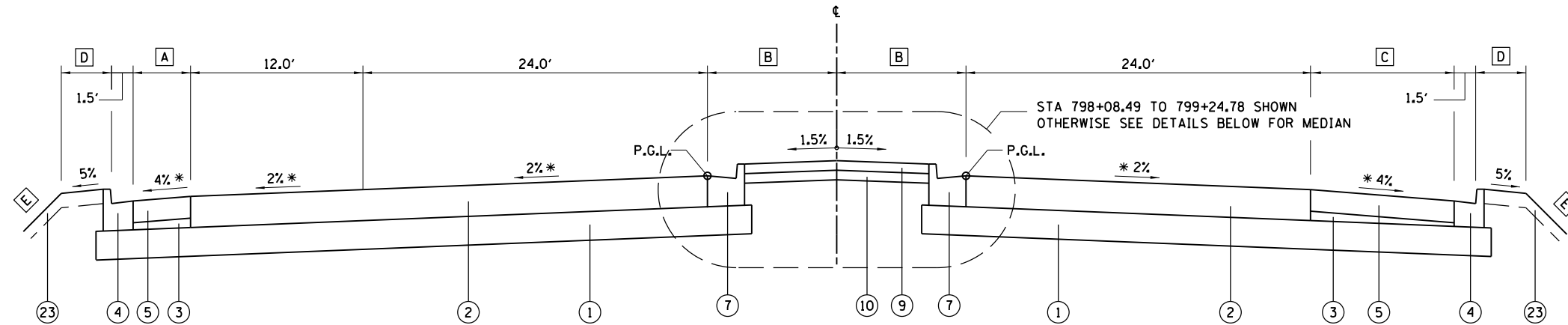
STATE OF ILLINOIS
DEPARTMENT OF TRANSPORTATION

SUMMARY OF QUANTITIES

SCALE: NTS	SHEET 1	OF 1	SHEETS	STA.	TO STA.	F.A.P. RTE. 610	SECTION (G)I-4	COUNTY SANGAMON	TOTAL SHEETS 24	SHEET NO. 3
ILLINOIS FED. AID PROJECT CONTRACT NO. 72FOO										

- A** STA 798+08.49 TO BEGIN OF SOUTH BRIDGE APPROACH PAVEMENT = 4.0'
END OF NORTH BRIDGE APPROACH PAVEMENT TO STA 808+82.68 = 10.0'
- B** STA 798+08.49 TO STA 801+90.99 = TAPER 17.5' TO 9.0'
STA 801+90.99 TO STA 808+82.68 = 9.0'
- C** STA 798+08.49 TO BEGIN OF SOUTH BRIDGE APPROACH PAVEMENT = 10.0'
END OF NORTH BRIDGE APPROACH PAVEMENT TO STA 803+05.00 = TAPER 15.15' TO 10.0'
STA 803+05.00 TO STA 808+82.68 = 10.0'
- D** STA 798+08.49 TO STA 808+00.00 = 3.5'
STA 808+00.00 TO STA 808+82.68 = TAPER 3.5' TO 4.0'
- E** STA 798+08.49 TO STA 808+00.00 = 2:1
STA 808+00.00 TO STA 808+82.68 = TRANSITION 2:1 TO 3:1

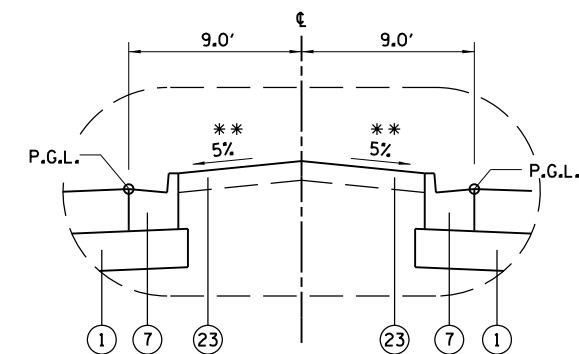
* TRANSITION FROM ROADWAY CROSS SLOPE TO BRIDGE CROSS SLOPE IN 40.00'
** TRANSITION TO PAVED MEDIAN CROSS SLOPE OR BRIDGE CROSS SLOPE IN 10.00'



MACARTHUR BOULEVARD
STA 798+08.49 TO STA 808+82.68 (BEGIN TURN LANE TAPER)
BRIDGE OMISSION STA 799+24.78 TO STA 802+14.78

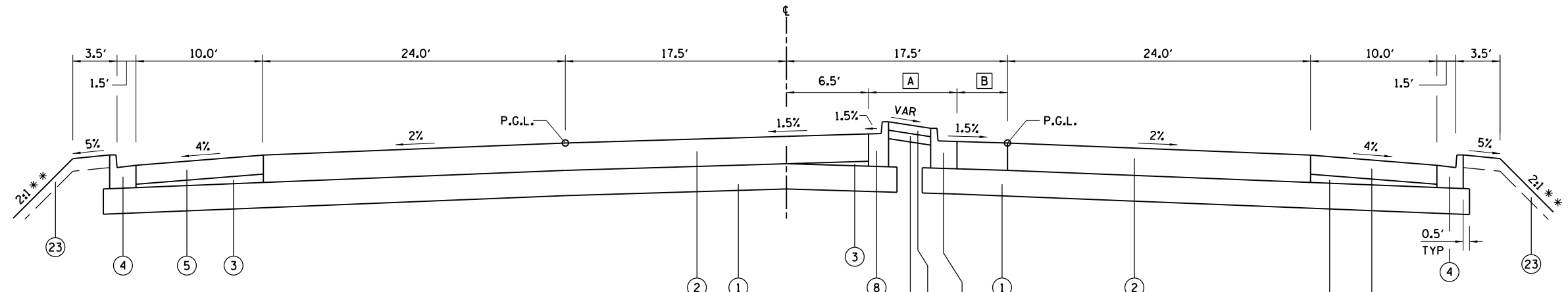
LEGEND

- | | |
|--|---|
| ① EX PROCESSED MODIFIED SOILS 12" | ⑭ NOT USED |
| ② EX HOT-MIX ASPHALT PAVEMENT (FULL DEPTH), 13" | ⑮ EX HOT-MIX ASPHALT SURFACE COURSE, MIX "C", N30 |
| ③ EX SUBBASE GRANULAR MATERIAL, TYPE C | ⑯ EX SUBBASE GRANULAR MATERIAL, TYPE A |
| ④ EX COMBINATION CONCRETE CURB AND GUTTER, TYPE B-6.18 | ⑰ EX AGGREGATE SHOULDERS, TYPE B 4" |
| ⑤ EX HOT-MIX ASPHALT SHOULDERS, 9" | ⑱ EX AGGREGATE BASE COURSE, TYPE A 6" |
| ⑥ EX HOT-MIX ASPHALT SHOULDERS, 13" | ⑲ NOT USED |
| ⑦ EX COMBINATION CONCRETE CURB AND GUTTER, TYPE B-6.24 | ⑳ EX HOT-MIX ASPHALT PAVEMENT (FULL DEPTH), 14" |
| ⑧ EX COMBINATION CONCRETE CURB AND GUTTER, TYPE B-6.12 | ㉑ NOT USED |
| ⑨ EX CONCRETE MEDIAN SURFACE, 4" | ㉒ NOT USED |
| ⑩ EX SUBBASE GRANULAR MATERIAL, TYPE C 4" | ㉓ EX TOPSOIL 6" |
| ⑪ EX PORTLAND CEMENT CONCRETE SIDEWALK 4" | ㉔ EX PIPE UNDERDRAIN STD 601001 |
| ⑫ EX AGGREGATE SHOULDERS, TYPE B 10" | ㉕ EX CONCRETE MEDIAN, TYPE SB-6.24 (SPECIAL) |
| ⑬ EX HOT-MIX ASPHALT PAVEMENT (FULL DEPTH), 10" | ㉖ EX SUBBASE GRANULAR MATERIAL, TYPE A 12" |
| | ㉗ EX CONCRETE MEDIAN, TYPE SB-6.12 |



STA 802+14.78 TO STA 808+82.68 (BEGIN TURN LANE TAPER)

TYPICAL SECTIONS
FOR INFORMATION ONLY



LEGEND

- | | |
|--|---|
| ① EX PROCESSED MODIFIED SOILS 12" | ⑭ NOT USED |
| ② EX HOT-MIX ASPHALT PAVEMENT (FULL DEPTH), 13" | ⑮ EX HOT-MIX ASPHALT SURFACE COURSE, MIX "C", N30 |
| ③ EX SUBBASE GRANULAR MATERIAL, TYPE C | ⑯ EX SUBBASE GRANULAR MATERIAL, TYPE A |
| ④ EX COMBINATION CONCRETE CURB AND GUTTER, TYPE B-6.18 | ⑰ EX AGGREGATE SHOULDERS, TYPE B 4" |
| ⑤ EX HOT-MIX ASPHALT SHOULDERS, 9" | ⑱ EX AGGREGATE BASE COURSE, TYPE A 6" |
| ⑥ EX HOT-MIX ASPHALT SHOULDERS, 13" | ⑲ NOT USED |
| ⑦ EX COMBINATION CONCRETE CURB AND GUTTER, TYPE B-6.24 | ⑳ EX HOT-MIX ASPHALT PAVEMENT (FULL DEPTH), 14" |
| ⑧ EX COMBINATION CONCRETE CURB AND GUTTER, TYPE B-6.12 | ㉑ NOT USED |
| ⑨ EX CONCRETE MEDIAN SURFACE, 4" | ㉒ NOT USED |
| ⑩ EX SUBBASE GRANULAR MATERIAL, TYPE C 4" | ㉓ EX TOPSOIL 6" |
| ⑪ EX PORTLAND CEMENT CONCRETE SIDEWALK 4" | ㉔ EX PIPE UNDERDRAIN STD 601001 |
| ⑫ EX AGGREGATE SHOULDERS, TYPE B 10" | ㉕ EX CONCRETE MEDIAN, TYPE SB-6.24 (SPECIAL) |
| ⑬ EX HOT-MIX ASPHALT PAVEMENT (FULL DEPTH), 10" | ㉖ EX SUBBASE GRANULAR MATERIAL, TYPE A 12" |
| | ㉗ EX CONCRETE MEDIAN, TYPE SB-6.12 |

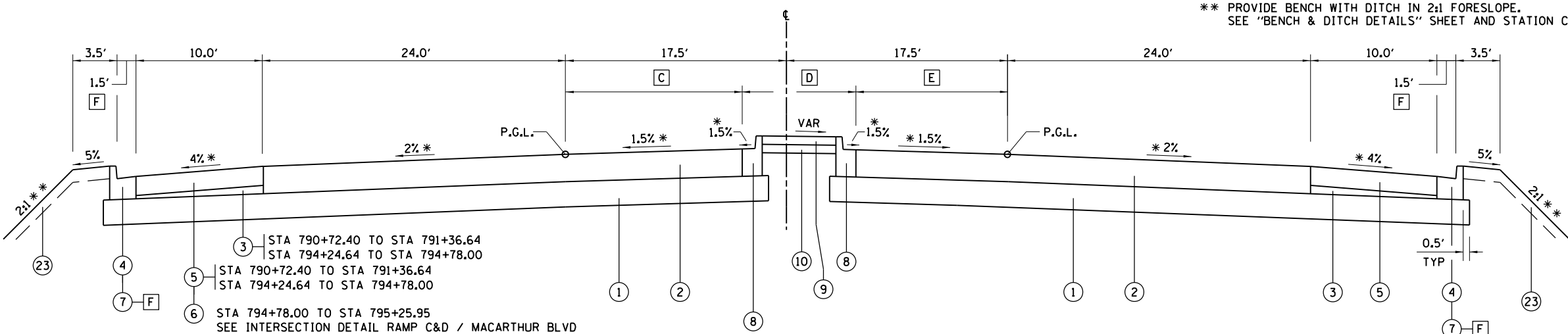
MACARTHUR BOULEVARD
 STA 788+93.92 TO STA 790+72.40 (BEGIN TURN LANE)

A STA 788+93.92 TO STA 789+68.92 = 6.5' TO 11.0'
 STA 789+68.92 TO STA 790+59.40 = 11.0'
 STA 790+59.40 TO STA 790+72.40 = TAPER 11.0' TO 10.0'

B STA 788+93.92 TO STA 789+68.92 = TAPER 4.5' TO 0.0'
 STA 789+68.92 TO STA 790+59.40 = 0.0'
 STA 790+59.40 TO STA 790+72.40 = TAPER 0.0' TO 1.0'

TYPICAL SECTIONS
 FOR INFORMATION ONLY

* TRANSITION FROM ROADWAY CROSS SLOPE TO BRIDGE CROSS SLOPE IN 40.00'
 ** PROVIDE BENCH WITH DITCH IN 2:1 FORESLOPE.
 SEE "BENCH & DITCH DETAILS" SHEET AND STATION CROSS SECTIONS.



③ STA 790+72.40 TO STA 791+36.64
 STA 794+24.64 TO STA 794+78.00

⑤ STA 790+72.40 TO STA 791+36.64
 STA 794+24.64 TO STA 794+78.00

⑥ STA 794+78.00 TO STA 795+25.95
 SEE INTERSECTION DETAIL RAMP C&D / MACARTHUR BLVD

C STA 790+72.40 TO STA 792+28.40 = TAPER 24.0' TO 12.0'
 STA 792+28.40 TO STA 795+13.03 = 12.0'
 STA 795+13.03 TO STA 795+25.95 = VARIES
 SEE INTERSECTION DETAIL RAMP C&D / MACARTHUR BLVD

D STA 790+72.40 TO STA 792+15.40 = 10.0'
 STA 792+15.40 TO STA 792+28.40 = 10.0' TO 11.0'
 STA 792+28.40 TO STA 795+13.03 = 11.0'
 STA 795+13.03 TO STA 795+25.95 = VARIES
 SEE INTERSECTION DETAIL RAMP C&D / MACARTHUR BLVD

MACARTHUR BOULEVARD
 STA 790+72.40 (BEGIN TURN LANE) TO STA 795+25.95
 STA 795+25.95 TO STA 798+08.49 RAMP C / RAMP D INTERSECTION OMISSION
 STA 791+36.64 TO STA 794+24.64 BRIDGE OMISSION

E STA 790+72.40 TO STA 792+15.40 = 1.0' TO 12.0'
 STA 792+15.40 TO STA 795+25.95 = 12.0'

F TRANSITION GUTTER WIDTH OVER 10' TO ALIGN FACE OF CURB WITH FACE OF BRIDGE APPROACH PAVEMENT CURB. TRANSITION PAID FOR AS B-6.18 C&G

HOT-MIX ASPHALT SURFACE

REMOVAL (VARIABLE DEPTH)

LOCATION	HMA SURF	
	MILLING THICKNES (IN)	REM VAR DEPTH (SQ YD)
SN 084-0512 (RR)		
NE APPROACH	2.0	487.95
SE APPROACH	2.0	458.34
NW APPROACH	2.0	275.65
SW APPROACH	2.0	174.22
SN 084-0513 (I-72)		
NE APPROACH	2.0	449.68
SE APPROACH	2.0	480.08
NW APPROACH	2.0	556.76
SW APPROACH	2.0	408.94
STA 803+31	2.0	12.63
TOTAL		3,304

PAVING

LOCATION	BIT HMA		
	PAVT AREA (SY)	MATL PR CT (TON)	SURFACE COURSE (TON)
SN 084-0512 (RR)			
NE APPROACH	487.95	0.19	61.48
SE APPROACH	458.34	0.17	57.75
NW APPROACH	275.65	0.10	42.45
SW APPROACH	174.22	0.07	36.59
SN 084-0513 (I-72)			
NE APPROACH	449.68	0.17	56.66
SE APPROACH	480.08	0.18	60.49
NW APPROACH	556.76	0.21	70.15
SW APPROACH	408.94	0.16	62.98
STA 803+31	25.35	0.01	3.19
TOTAL		1.3	451.7

CONCRETE CURB REPAIR

LOCATION	LENGTH (FOOT)
SN 084-0512 (RR)	
STA 799+03 TO STA 799+22 LT APPR PAVT	19.0
STA 802+38 TO STA 802+43 RT APPR PAVT	5.0
SN 084-0513 (I-72)	
STA 791+32 TO STA 791+37 LT APPR PAVT	5.0
TOTAL	29.0

CONCRETE FOUNDATIONS (SPECIAL)

LOCATION	QUANTITY (EACH)
STA 791+24 RT	1
STA 791+25 LT	1
STA 794+41 RT	1
STA 798+90 LT	1
STA 802+04 LT	1
TOTAL	5

COMBINATION CONCRETE CURB & GUTTER

LOCATION	B-6.18 B-6.24	
	LENGTH (FOOT)	LENGTH (FOOT)
STA 790+24 TO STA 790+74 RT OUTSIDE	50.0	
STA 791+07 TO STA 791+32 LT OUTSIDE	25.0	
STA 794+20 TO STA 794+51 LT OUTSIDE	31.0	
STA 794+75 TO STA 795+20 RT OUTSIDE	45.0	
STA 794+77 TO STA 795+27 LT OUTSIDE	50.0	
STA 798+57 TO STA 798+93 LT OUTSIDE	36.0	
STA 801+82 TO STA 802+25 LT OUTSIDE	43.0	
STA 798+20 TO STA 798+80 RT MEDIAN		60.0
STA 802+09 TO STA 802+50 LT MEDIAN		41.0
STA 802+20 TO STA 802+71 RT MEDIAN		51.0
STA 802+42 TO STA 802+67 RT OUTSIDE	25.0	
STA 802+82 TO STA 803+21 LT OUTSIDE	39.0	
STA 803+04 TO STA 803+55 RT OUTSIDE	51.0	
TOTAL	395.0	152.0

COMBINATION CONCRETE CURB & GUTTER REMOVAL

LOCATION	TYPE LENGTH	
	SIZE	(FOOT)
STA 790+24 TO STA 790+74 RT OUTSIDE	B-6.18	50.0
STA 791+07 TO STA 791+32 LT OUTSIDE	B-6.18	25.0
STA 794+20 TO STA 794+51 LT OUTSIDE	B-6.18	31.0
STA 794+75 TO STA 795+20 RT OUTSIDE	B-6.18	45.0
STA 794+77 TO STA 795+27 LT OUTSIDE	B-6.18	50.0
STA 798+57 TO STA 798+93 LT OUTSIDE	B-6.18	36.0
STA 798+20 TO STA 798+80 RT MEDIAN	B-6.24	60.0
STA 801+82 TO STA 802+25 LT OUTSIDE	B-6.18	43.0
STA 802+09 TO STA 802+50 LT MEDIAN	B-6.24	41.0
STA 802+20 TO STA 802+71 RT MEDIAN	B-6.24	51.0
STA 802+42 TO STA 802+67 RT OUTSIDE	B-6.18	25.0
STA 802+82 TO STA 803+21 LT OUTSIDE	B-6.18	39.0
STA 803+04 TO STA 803+55 RT OUTSIDE	B-6.18	51.0
TOTAL		547.0

FRENCH DRAINS

LOCATION	VOLUME (CU YD)
SN 084-0512 (RR)	
STA 799+05 LT	1.5
STA 799+70 RT	1.5
STA 801+67 LT	1.5
STA 802+30 RT	1.5
SN 084-0513 (I-72)	
STA 791+46 LT	1.5
STA 791+56 RT	1.5
STA 794+04 LT	1.5
STA 794+15 RT	1.5
TOTAL	12

VERTICAL ADJUSTMENT OF GUARDRAIL

LOCATION	LENGTH (FOOT)
STA 791+07 TO STA 791+57 LT	50.00
STA 790+24 TO STA 790+74 RT	50.00
STA 794+70 TO STA 795+20 RT	50.00
STA 794+77 TO STA 795+27 LT	50.00
STA 798+39 TO STA 799+23 LT	84.00
STA 801+82 TO STA 803+21 LT	139.00
STA 802+13 TO STA 803+55 RT	142.00
TOTAL	565

PLACEMENT OF CEMENT GROUT

LOCATION	VOLUME (CU FT)
SN 084-0512 (RR)	
NE APPROACH	196.80
SE APPROACH	110.70
NW APPROACH	221.40
SW APPROACH	405.90
SN 084-0513 (I-72)	
NE APPROACH	64.80
SE APPROACH	170.44
NW APPROACH	64.80
SW APPROACH	240.86
TOTAL	1,475.7 *

* 25% OVERAGE ADDED INTO QUANTITY

PAVEMENT MARKING REMOVAL

LOCATION	AREA (SQ FT)
RAMP B	
STA 21+00 TO STA 31+00 LT EDGE LINE	333.33
STA 21+00 TO STA 31+00 RT EDGE LINE	333.33
STA 21+00 TO STA 25+63 SKIP DASH	38.58
TOTAL	705

URETHANE PAVEMENT MARKING - LINE 6"

LOCATION	LENGTH (FOOT)
MACARTHUR	
STA 790+75 TO STA 791+35 LT LANE LINE	60
STA 794+26 TO STA 795+15 RT LANE LINE	89
STA 798+65 TO STA 799+02 LT LANE LINE	37
STA 790+59 TO STA 791+38 RT MINI SKIP DASH	20
STA 794+24 TO STA 795+27 LT MINI SKIP DASH	26
STA 801+96 TO STA 802+50 LT MINI SKIP DASH	14
RAMP B	
STA 25+63 TO STA 31+00 LT MINI SKIP DASH	136
TOTAL	246

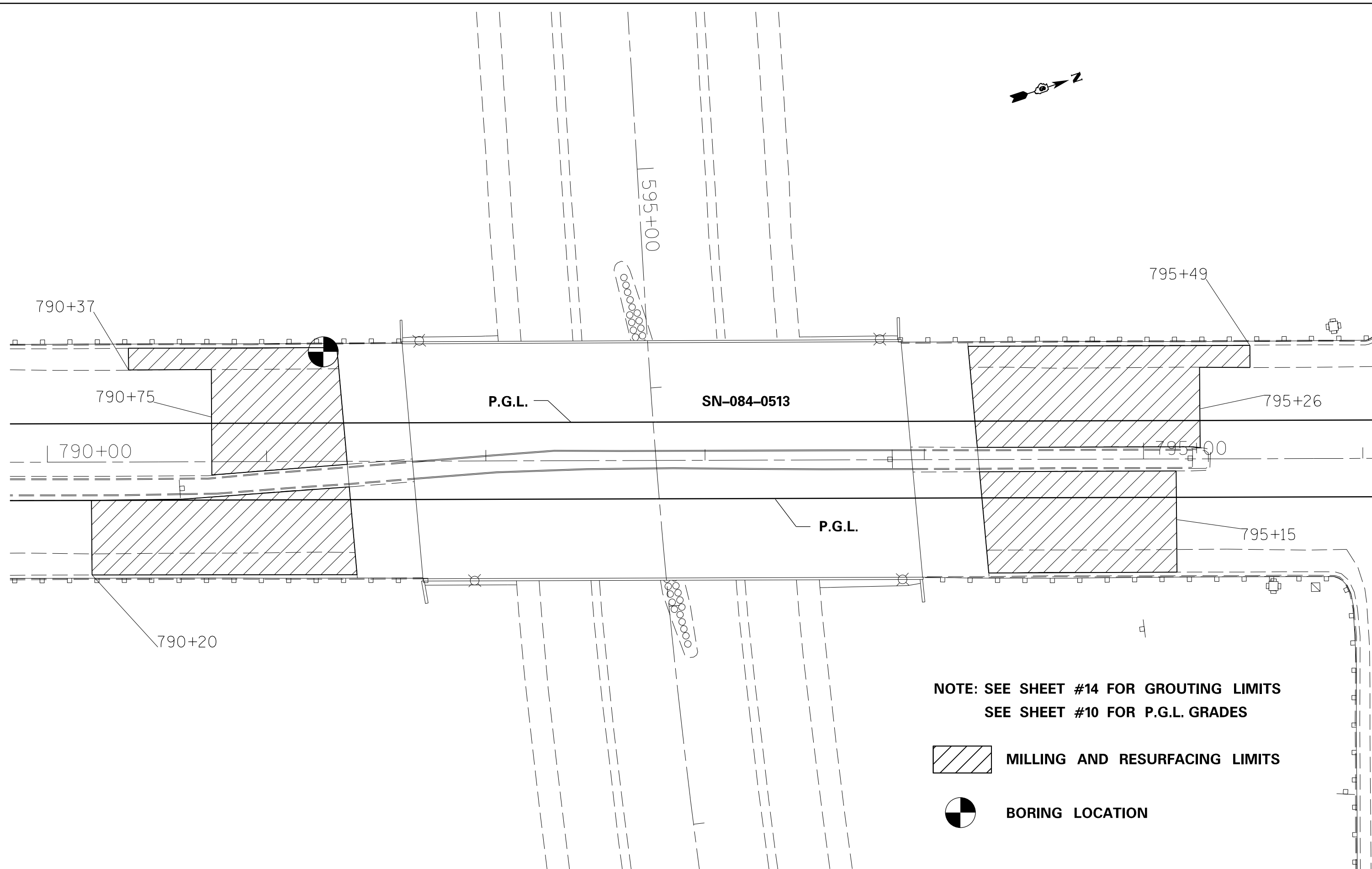
URETHANE PAVEMENT MARKING -
LETTERS & SYMBOLS

LOCATION	AREA (SF)
MACARTHUR	
STA 792+16 RT LEFT TURN ARROW	15.6 *
STA 792+22 LT LEFT TURN ARROW	15.6 *
STA 793+05 RT LEFT TURN ARROW	15.6 *
STA 793+79 LT LEFT TURN ARROW	15.6 *
STA 794+05 RT LEFT TURN ARROW	15.6 *
STA 795+06 RT LEFT TURN ARROW	15.6
STA 802+00 LT RIGHT TURN ARROW	15.6
TOTAL	109.2

* TO BE PLACED ON SN 084-0513
SEE SHEET 13 FOR INFORMATION

URETHANE PAVEMENT MARKING - LINE 5"

LOCATION	LENGTH (FOOT)
SOLID LINE	
MACARTHUR	
STA 790+37 TO STA 791+33 LT EDGE LINE	96
STA 790+75 TO STA 791+37 RT MEDIAN	62
STA 790+20 TO STA 791+37 RT MEDIAN	117
STA 790+20 TO STA 791+40 RT EDGE LINE	120
STA 794+21 TO STA 795+49 LT EDGE LINE	128
STA 794+20 TO STA 795+26 LT MEDIAN	106
STA 794+25 TO STA 795+15 RT MEDIAN	90
STA 794+28 TO STA 795+15 RT EDGE LINE	87
STA 798+15 TO STA 798+65 LT EDGE LINE	50
STA 798+65 TO STA 799+16 LT MEDIAN	51
STA 798+21 TO STA 799+33 RT MEDIAN	112
STA 798+21 TO STA 799+52 RT EDGE LINE	131
STA 801+89 TO STA 802+50 LT EDGE LINE	61
STA 802+10 TO STA 802+50 LT MEDIAN	40
STA 802+20 TO STA 803+53 RT MEDIAN	133
STA 802+42 TO STA 803+53 RT EDGE LINE	111
STA 803+24 TO STA 803+31 LT EDGE LINE	7
RAMP B	
STA 21+00 TO STA 31+00 LT EDGE LINE	1000
STA 21+00 TO STA 31+00 RT EDGE LINE	1000
SKIP DASH	
STA 790+20 TO STA 791+39 RT	30
STA 790+75 TO STA 791+34 LT	20
STA 794+23 TO STA 795+26 LT	30
STA 794+28 TO STA 795+15 RT	30
STA 798+65 TO STA 799+09 LT	20
STA 798+21 TO STA 799+40 RT	30
STA 801+96 TO STA 802+50 LT	20
STA 802+03 TO STA 802+50 LT	20
STA 802+27 TO STA 802+53 RT	10
RAMP B	
STA 21+00 STA 25+63	120
TOTAL	3,832



**NOTE: SEE SHEET #14 FOR GROUTING LIMITS
SEE SHEET #10 FOR P.G.L. GRADES**

 **MILLING AND RESURFACING LIMITS**

 **BORING LOCATION**

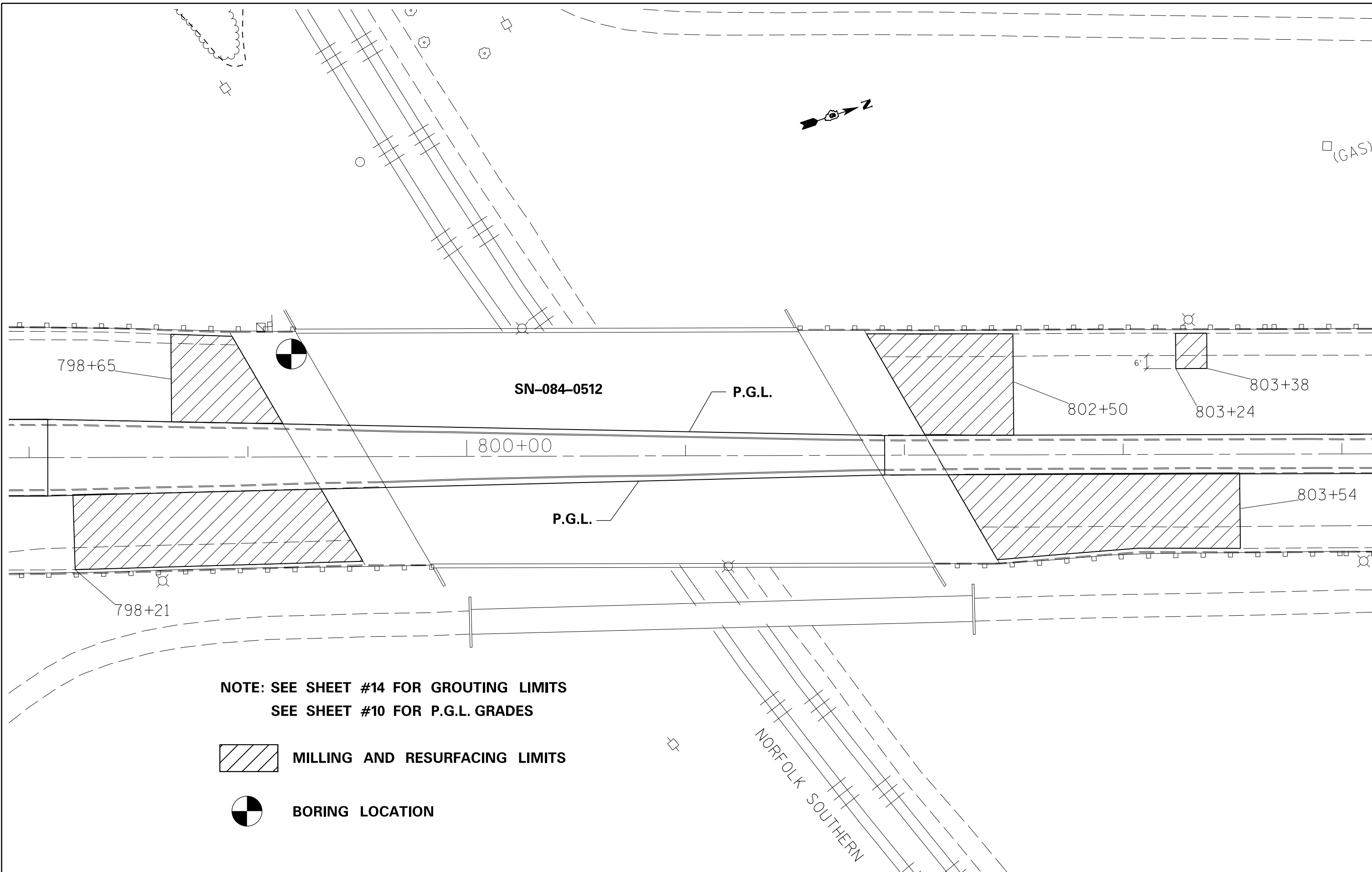
FILE NAME =	USER NAME = sparksgw	DESIGNED -	REVISED -
ei:\pw\work\p\idot\sparksgw\0280145\067200-sht-pln.dgn		DRAWN -	REVISED -
	PLOT SCALE = 40.0000' / in.	CHECKED -	REVISED -
	PLOT DATE = Dec-21-2011 03:00:56PM	DATE -	REVISED -

**STATE OF ILLINOIS
DEPARTMENT OF TRANSPORTATION**

**PLAN SHEETS
MACARTHUR BOULEVARD**

SCALE: 20 SHEET 1 OF SHEETS STA. 790+00 TO STA. 796+00

F.A.P. RTE.	SECTION	COUNTY	TOTAL SHEETS	SHEET NO.
610	(GI)-4	SANGAMON	24	8
CONTRACT NO. 72F00			ILLINOIS FED. AID PROJECT	



**NOTE: SEE SHEET #14 FOR GROUTING LIMITS
SEE SHEET #10 FOR P.G.L. GRADES**

 **MILLING AND RESURFACING LIMITS**

 **BORING LOCATION**

FILE NAME =	USER NAME = sparksgw	DESIGNED -	REVISED -
c:\pw\work\p\dot\sparksgw\0280145\067200-sht-pln.dgn		DRAWN -	REVISED -
	PLOT SCALE = 40.0000' / in.	CHECKED -	REVISED -
	PLOT DATE = Dec-21-2011 03:00:57PM	DATE -	REVISED -

**STATE OF ILLINOIS
DEPARTMENT OF TRANSPORTATION**

**PLAN SHEETS
MACARTHUR BOULEVARD**

SCALE: 20 SHEET 2 OF 2 SHEETS STA. 798+00 TO STA. 804+00

F.A.P. RTE.	SECTION	COUNTY	TOTAL SHEETS	SHEET NO.
610	(GI-4)	SANGAMON	24	9
ILLINOIS FED. AID PROJECT			CONTRACT NO. 72F00	

P. G. L. GRADES

SN 084-0012 (RR)

STATION OFFSET ELEVATION

SE APPROACH

798+25	17.2' RT	641.19
798+50	16.6' RT	641.03
798+75	16.0' RT	640.84
799+00	15.5' RT	640.61
799+25	14.9' RT	640.33
799+50	14.4' RT	640.02
799+75	13.8' RT	639.67

NE APPROACH

802+00	9.0' RT	635.79
802+25	9.0' RT	635.41
802+50	9.0' RT	634.91
802+75	9.0' RT	634.41
803+00	9.0' RT	633.87
803+25	9.0' RT	633.34
803+50	9.0' RT	632.83

SW APPROACH

798+50	16.6' LT	641.02
798+75	16.0' LT	640.83
799+00	15.5' LT	640.60
799+25	14.9' LT	640.31
799+50	14.4' LT	639.93

NW APPROACH

802+00	9.0' LT	635.94
802+25	9.0' LT	635.50
802+50	9.0' LT	634.96
802+75	9.0' LT	634.41

SN 084-0013 (INT)

STATION OFFSET ELEVATION

SE APPROACH

790+25	17.5' RT	636.14
790+50	17.5' RT	636.67
790+75	17.5' RT	637.16
791+00	17.5' RT	637.64
791+25	17.5' RT	638.09
791+50	17.5' RT	638.46
791+75	17.5' RT	638.80

NE APPROACH

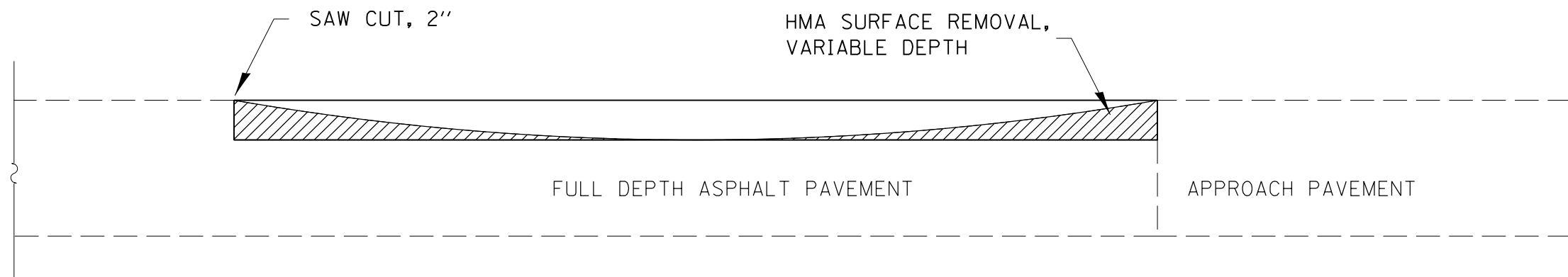
794+00	17.5' RT	641.36
794+25	17.5' RT	641.68
794+50	17.5' RT	641.82
794+75	17.5' RT	641.90
795+00	17.5' RT	641.95

SW APPROACH

790+75	17.5' LT	637.07
791+00	17.5' LT	637.57
791+25	17.5' LT	638.04
791+50	17.5' LT	638.47
791+75	17.5' LT	638.87
792+00	17.5' LT	639.22

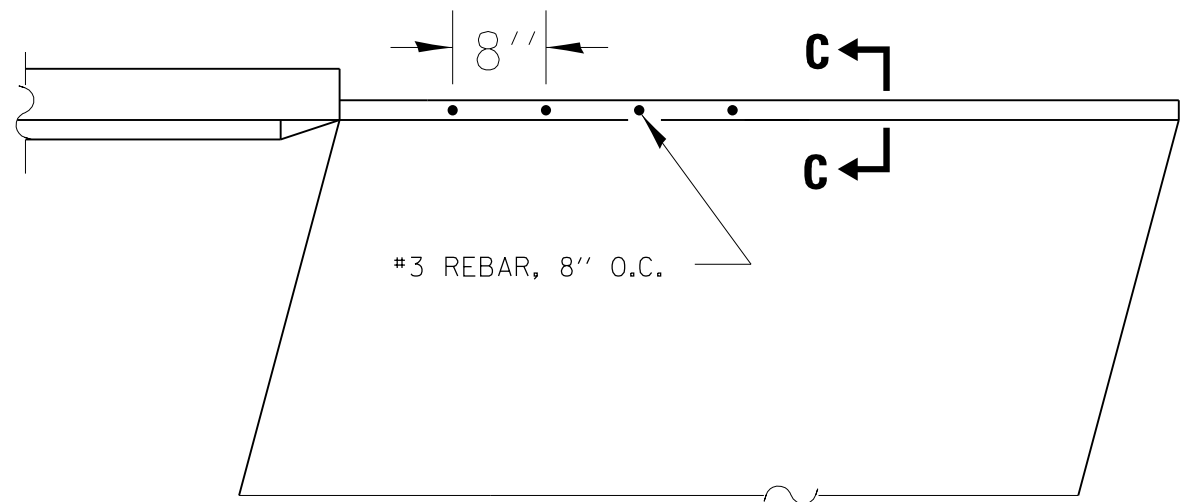
NW APPROACH

794+00	17.5' LT	641.43
794+25	17.5' LT	641.67
794+50	17.5' LT	641.80
794+75	17.5' LT	641.88
795+00	17.5' LT	641.94
795+25	17.5' LT	641.98

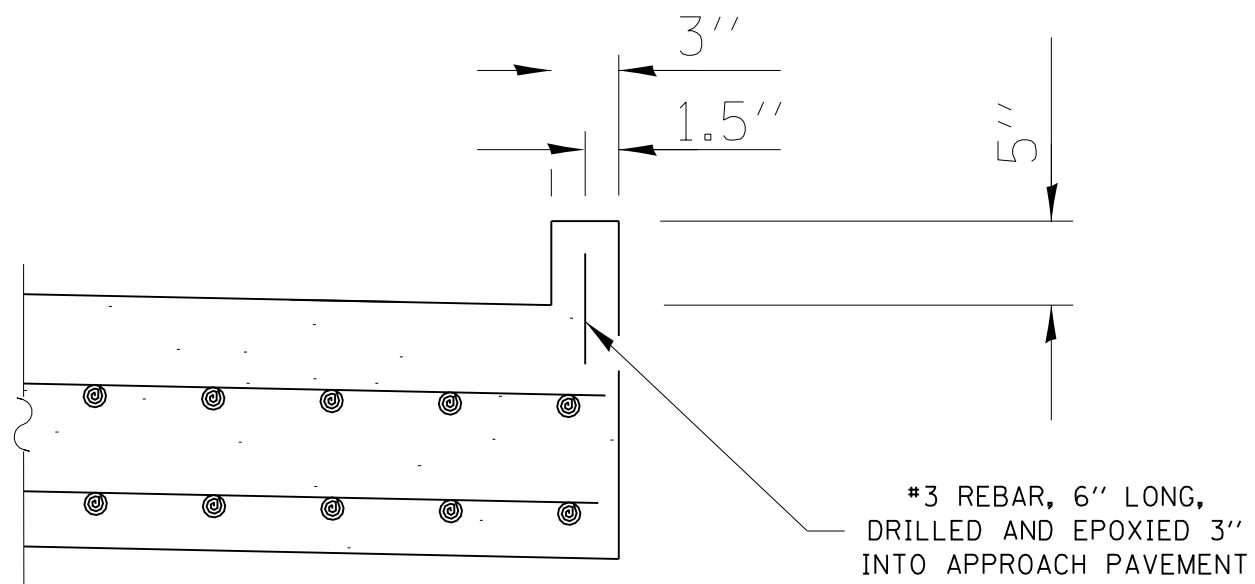


NOTE:
 BUTT JOINTS INCLUDED IN
 THE COST OF HMA SURFACE
 REMOVAL, VARIABLE DEPTH

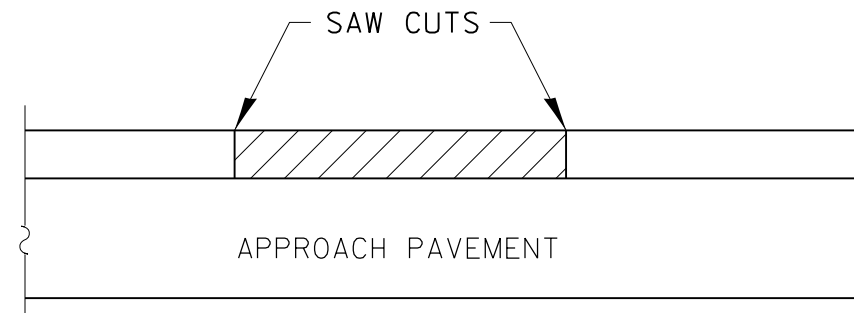
FILE NAME =	USER NAME = sparksgw	DESIGNED -	REVISED -	STATE OF ILLINOIS DEPARTMENT OF TRANSPORTATION	BUTT JOINT DETAIL SHEET			F.A.P. RTE.	SECTION	COUNTY	TOTAL SHEETS	SHEET NO.
c:\pwork\pwork\sparksgw\0280145\067200-sht-details.dgn	DRAWN -	REVISED -	610					(GI)-4	SANGAMON	24	11	
PLOT SCALE = 200.0000' / in.	CHECKED -	REVISED -	CONTRACT NO. 72F00									
PLOT DATE = Dec-21-2011 03:01:09PM	DATE -	REVISED -	SCALE: NTS		SHEET 1	OF 7	SHEETS	STA.	TO STA.	ILLINOIS FED. AID PROJECT		



TYPICAL DETAIL PLAN



SECTION C-C

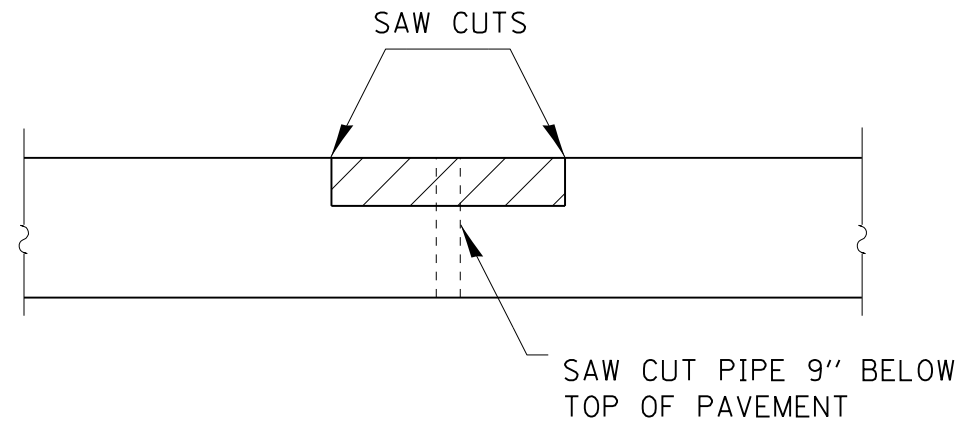


ELEVATION

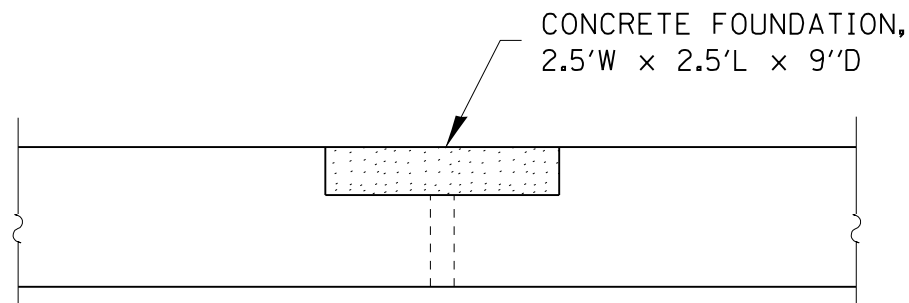
 CURB REMOVAL AREA

NOTE: SAW CUTS SHALL BE MADE PRIOR TO REMOVAL OF CONCRETE CURB

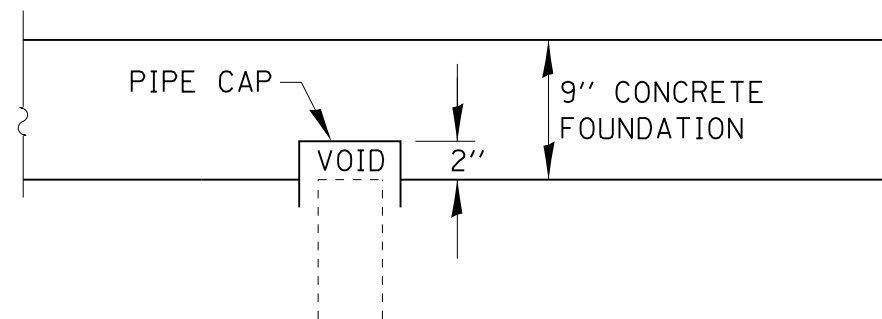
FILE NAME =	USER NAME = sparksgw	DESIGNED -	REVISED -	STATE OF ILLINOIS DEPARTMENT OF TRANSPORTATION	APPROACH PAVEMENT CURB REPAIR DETAILS			F.A.P. RTE.	SECTION	COUNTY	TOTAL SHEETS	SHEET NO.
ci:\pw\work\p\idot\sparksgw\0280145\067200-sht-details.dgn		DRAWN -	REVISED -		610	(GI-4)	SANGAMON	24	12			
	PLOT SCALE = 200.0000' / in.	CHECKED -	REVISED -		CONTRACT NO. 72FOO			ILLINOIS FED. AID PROJECT				
	PLOT DATE = Dec-21-2011 03:01:09PM	DATE -	REVISED -		SCALE: NTS	SHEET 2	OF 7 SHEETS	STA.	TO STA.			



 FOUNDATION REMOVAL AREA



 PROPOSED CONCRETE FOUNDATION



PIPE CAPPING DETAIL

NOTES

COST OF FILLING PIPE WITH CLSM INCLUDED IN COST OF CONCRETE FOUNDATION (SPECIAL)

SAW CUTS REQUIRED FOR FOUNDATION REMOVAL INCLUDED IN COST OF CONCRETE FOUNDATION (SPECIAL)

SAW CUTS REQUIRED FOR PIPE REMOVAL INCLUDED IN COST OF CONCRETE FOUNDATION (SPECIAL)

PIPE SHALL BE CAPPED WITH PVC OR OTHER MATERIAL APPROVED BY THE ENGINEER TO ACCOMODATE FUTURE SETTLEMENT. COST INCLUDED IN CONCRETE FOUNDATION (SPECIAL)

FILE NAME =	USER NAME = sparksgw	DESIGNED -	REVISED -
ei:\pwork\pwork\sparksgw\0280145\067200-sht-details.dgn		DRAWN -	REVISED -
	PLOT SCALE = 200.0000' / in.	CHECKED -	REVISED -
	PLOT DATE = Dec-21-2011 03:01:09PM	DATE -	REVISED -

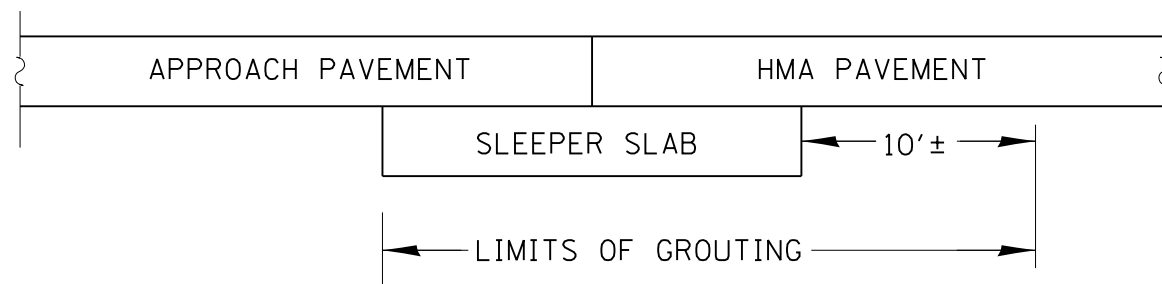
**STATE OF ILLINOIS
DEPARTMENT OF TRANSPORTATION**

**CONCRETE FOUNDATIONS
REMOVAL & REPLACEMENT**

SCALE: NTS SHEET 3 OF 7 SHEETS STA. TO STA.

F.A.P. RTE.	SECTION	COUNTY	TOTAL SHEETS	SHEET NO.
610	(GI-4)	SANGAMON	24	13
CONTRACT NO. 72FOO			ILLINOIS FED. AID PROJECT	

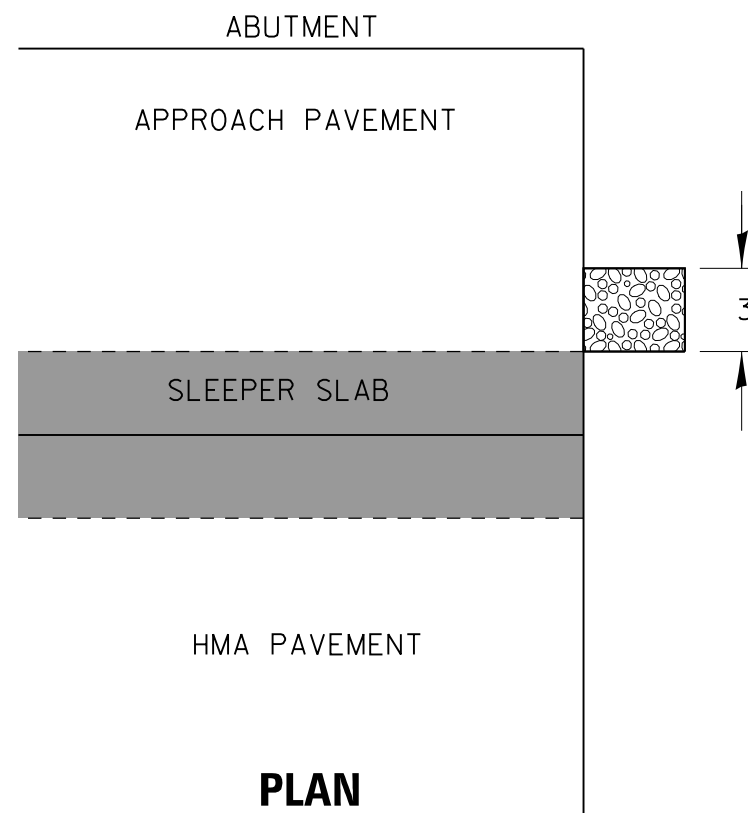
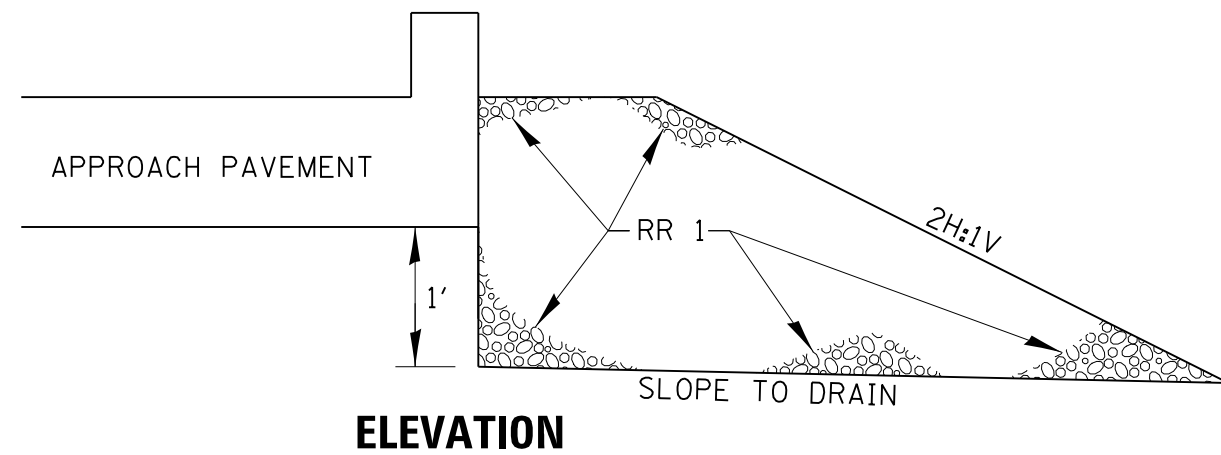
GROUTING DETAIL



NOTES:

- 1) SLEEPER SLAB AND APPROACH PAVEMENT SHALL BE RAISED TO THE REQUIRED ELEVATION USING CEMENT GROUT
- 2) GROUTING BELOW THE HMA TRANSITION PAVEMENT OUTSIDE THE LIMITS OF THE SLEEPER SLAB SHALL BE THE MINIMUM REQUIRED TO PREVENT VERTICAL SHEARING OF THE HMA PAVEMENT STRUCTURE AS THE SLEEPER SLAB IS LIFTED
- 3) AT SOME LOCATIONS, A VOID EXISTS BETWEEN THE TOP OF THE SLEEPER SLAB AND THE BOTTOM OF THE PCC APPROACH PAVEMENT. THIS VOID SHALL NOT BE FILLED WITH GROUT. REFER TO THE SPECIAL PROVISION.

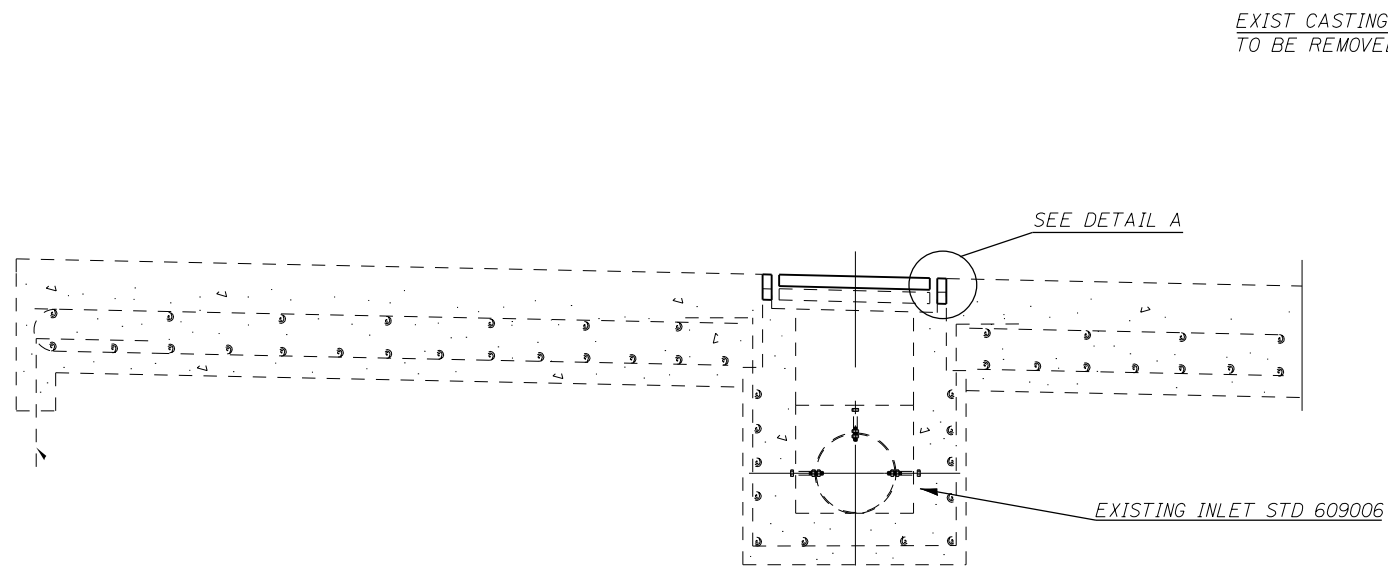
FRENCH DRAIN DETAIL



NOTES:

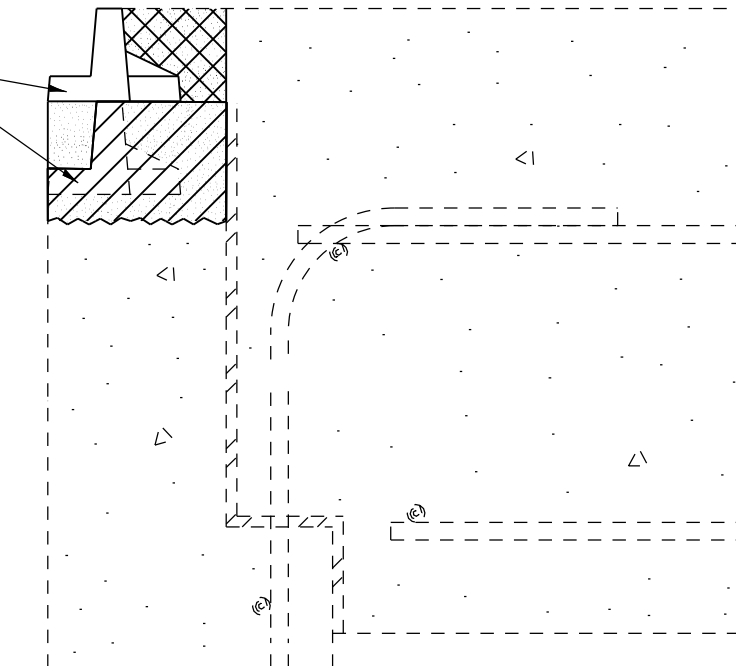
- 1) PLACING GEOTECHNICAL FABRIC IS NOT REQUIRED.
- 2) FRENCH DRAIN AGGREGATE SHALL BE A QUALITY, RR1
- 3) FRENCH DRAIN SHALL NOT BE CONSTRUCTED UNTIL GROUTING IS COMPLETE.
- 4) FRENCH DRAIN TO BE PLACED ADJACENT TO THE SLEEPER SLAB ON THE APPROACH PAVEMENT SIDE

FILE NAME =	USER NAME = sparksgw	DESIGNED -	REVISED -	STATE OF ILLINOIS DEPARTMENT OF TRANSPORTATION	GROUTING DETAILS AND FRENCH DRAINS			F.A.P. RTE.	SECTION	COUNTY	TOTAL SHEETS	SHEET NO.
ci:\pw\work\p\dot\sparksgw\10280145\067200-sht-details.dgn	DRAWN -	REVISED -	610					(GI-4)	SANGAMON	24	14	
PLOT SCALE = 200.0000' / in.	CHECKED -	REVISED -	CONTRACT NO. 72FOO									
PLOT DATE = Dec-21-2011 03:01:10PM	DATE -	REVISED -	ILLINOIS FED. AID PROJECT									
				SCALE: NTS	SHEET 4	OF 7 SHEETS	STA.	TO STA.				



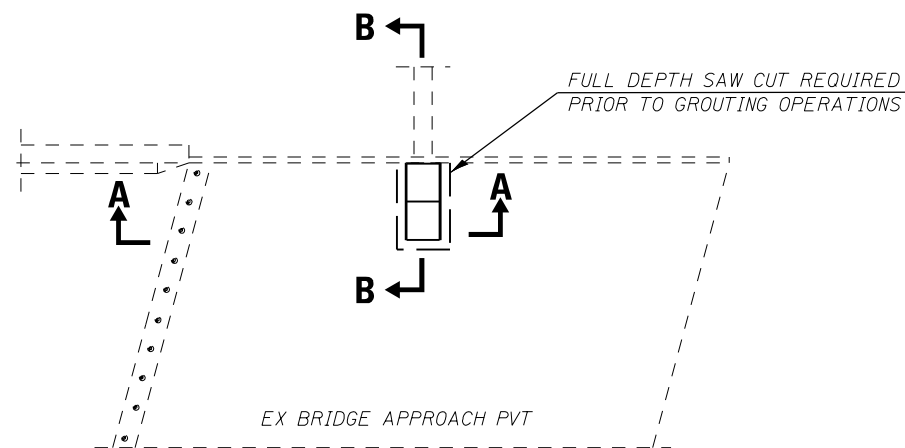
SECTION A-A

EXIST CASTING AND GRATE
TO BE REMOVED AND REINSTALLED

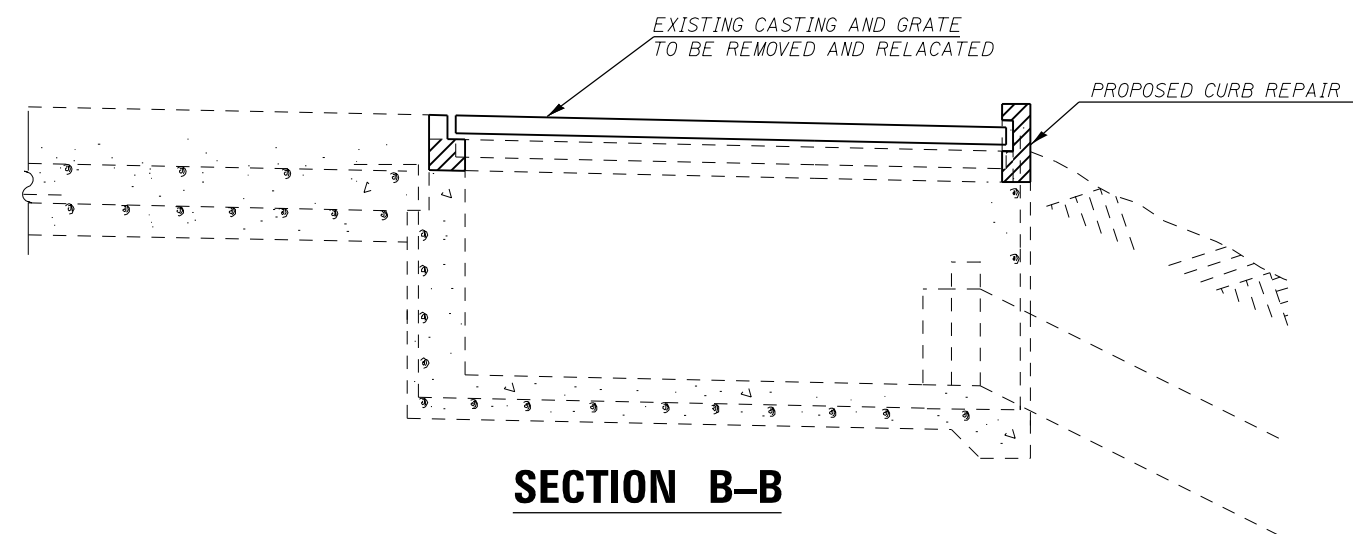


- CONCRETE TO BE REMOVED
- 1" POLYMER CONCRETE POUR
- 2" POLYMER CONCRETE POUR

DETAIL A



TYPICAL DETAIL PLAN



SECTION B-B

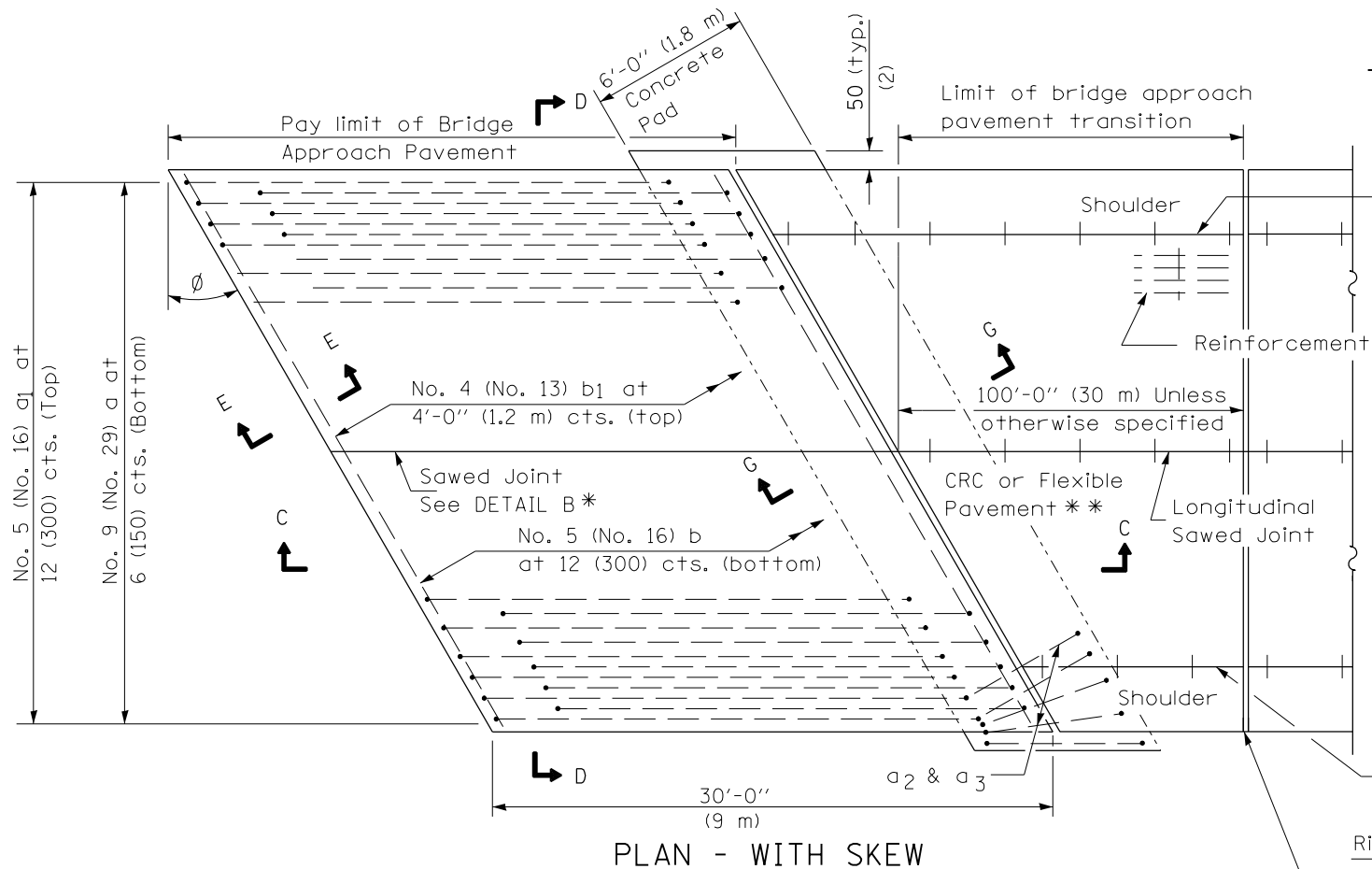
FILE NAME =	USER NAME = sparksgw	DESIGNED -	REVISED -
ei:\pw\work\p\idot\sparksgw\10280145\067200-sht-details.dgn		DRAWN -	REVISED -
	PLOT SCALE = 200.0000' / in.	CHECKED -	REVISED -
	PLOT DATE = Dec-21-2011 03:01:00PM	DATE -	REVISED -

STATE OF ILLINOIS
DEPARTMENT OF TRANSPORTATION

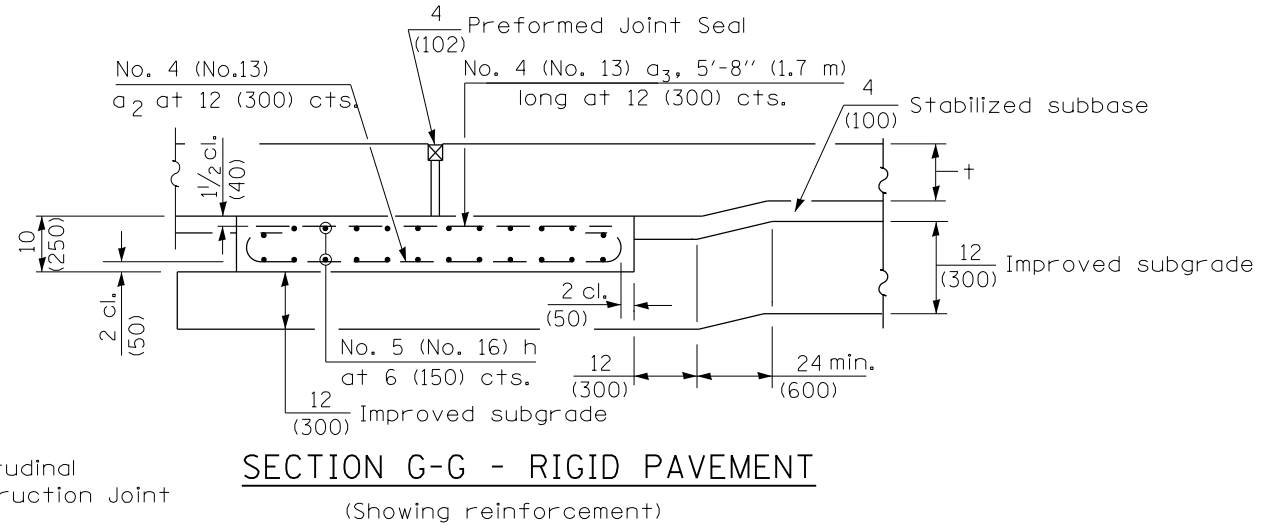
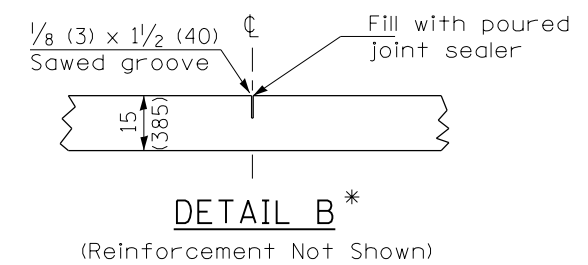
INLET RECONSTRUCTION DETAIL

SCALE: NTS SHEET 5 OF SHEETS STA. TO STA.

F.A.P. RTE.	SECTION	COUNTY	TOTAL SHEETS	SHEET NO.
610	(GI-4)	SANGAMON	24	15
CONTRACT NO. 72FOO			ILLINOIS FED. AID PROJECT	

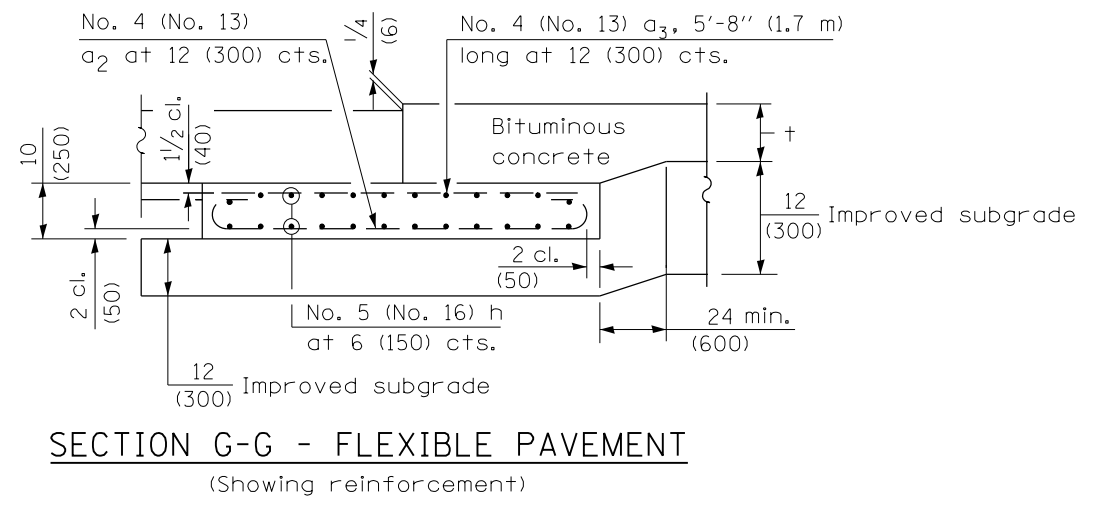


NEW CONSTRUCTION



Rigid Pavement only:
Wide Flange Beam Terminal Joint (See DETAIL AT BEAM - Standard 421101 or 421106) or 2 (50) Trans. Exp. Joint as detailed on Standard 420001.

* Saw \perp or lane edge if poured two or more lane widths at a time.
** Omit Reinforcement, tie bars and Long. sawed Jt. for Flexible Pavement.

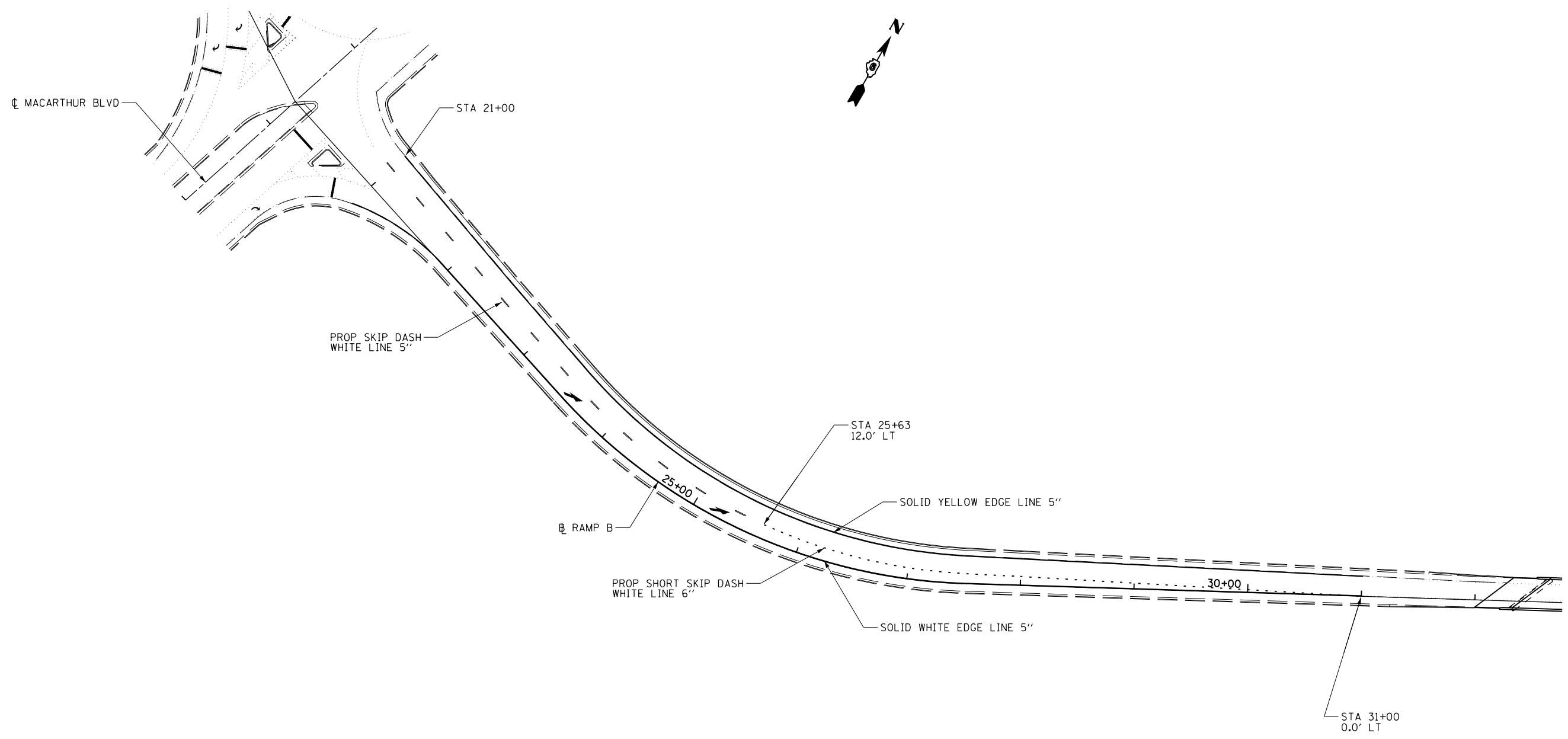


NOTE
THIS SHEET FOR INFORMATION ONLY

GENERAL NOTES

THICKNESS-"t"=Thickness of Pavement.
See Standard 421001 for reinforcement details not shown.
See Standard 420001 for joint details not shown.
All dimensions are in inches (millimeters) unless otherwise shown.

FILE NAME =	USER NAME = sparksgw	DESIGNED -	REVISED -	STATE OF ILLINOIS DEPARTMENT OF TRANSPORTATION	BRIDGE APPROACH PAVEMENT STANDARD 420401-06			F.A.P. RTE.	SECTION	COUNTY	TOTAL SHEETS	SHEET NO.
c:\pwork\pwork\sparksgw\0280145\067200-sht-details.dgn	DRAWN -	REVISED -	610					(GI-4)	SANGAMON	24	16	
PLOT SCALE = 200.0000' / in.	CHECKED -	REVISED -	CONTRACT NO. 72F00									
PLOT DATE = Dec-21-2011 03:01:11PM	DATE -	REVISED -	ILLINOIS FED. AID PROJECT									
				SCALE: NTS	SHEET 6	OF 7 SHEETS	STA.	TO STA.				



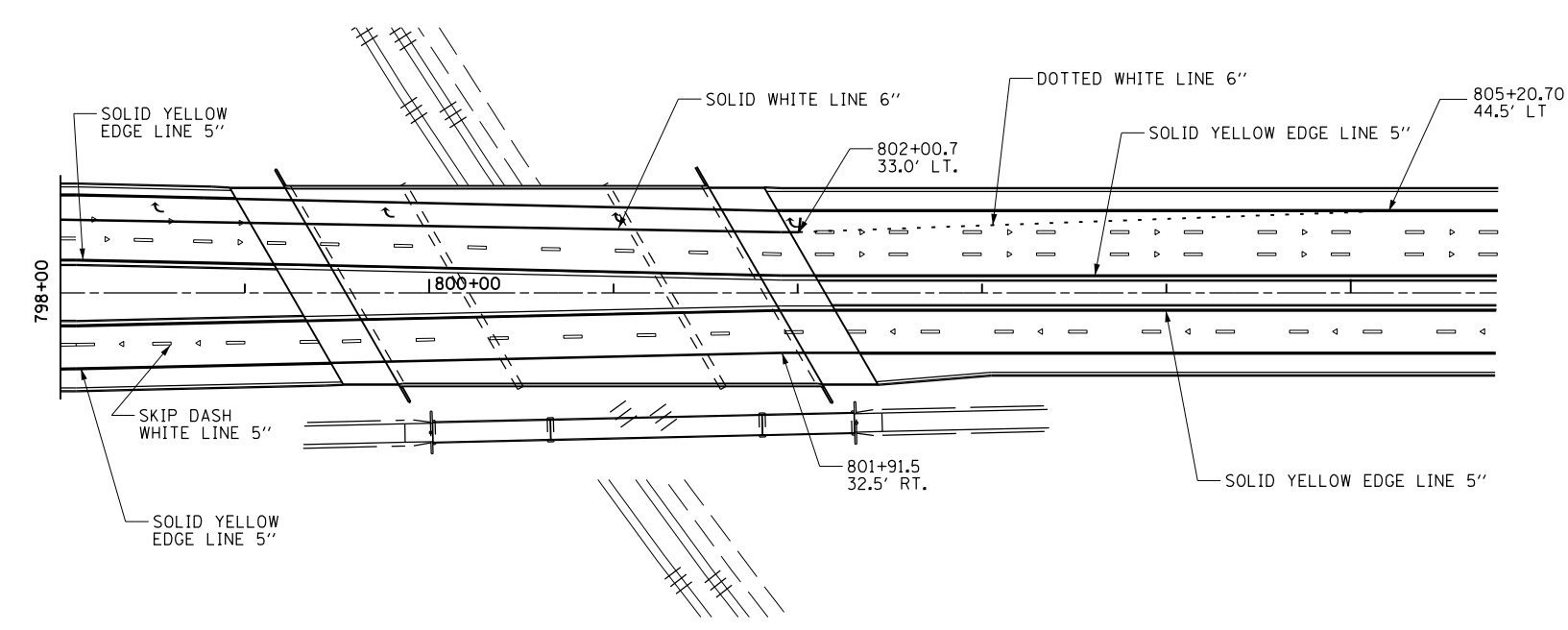
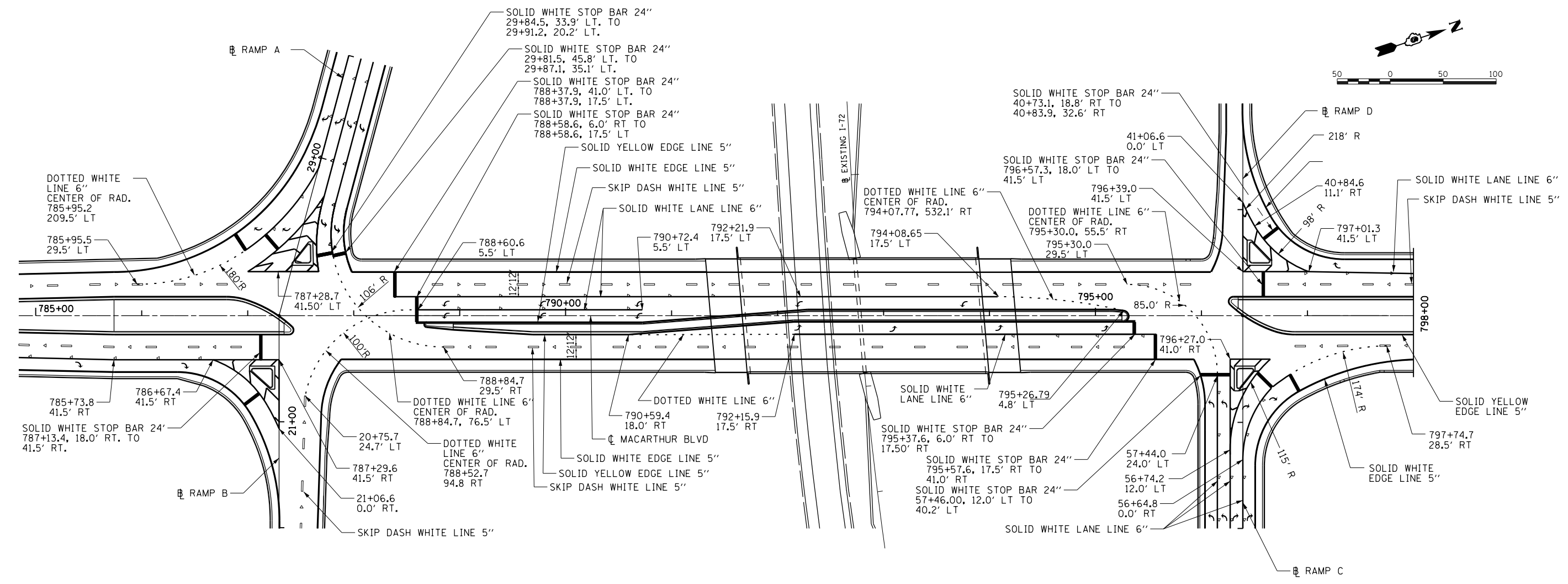
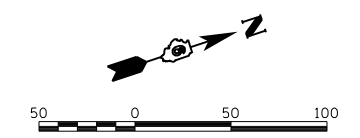
FILE NAME =	USER NAME = sparksgw	DESIGNED -	REVISED -
c:\pwork\pwork\sparksgw\0280145\067200\pave-mark.dgn		DRAWN -	REVISED -
	PLOT SCALE = 100.0000' / 1in.	CHECKED -	REVISED -
	PLOT DATE = Dec-21-2011 03:01:20PM	DATE -	REVISED -

**STATE OF ILLINOIS
DEPARTMENT OF TRANSPORTATION**

**PROPOSED PAVEMENT MARKINGS
RAMP "B"**

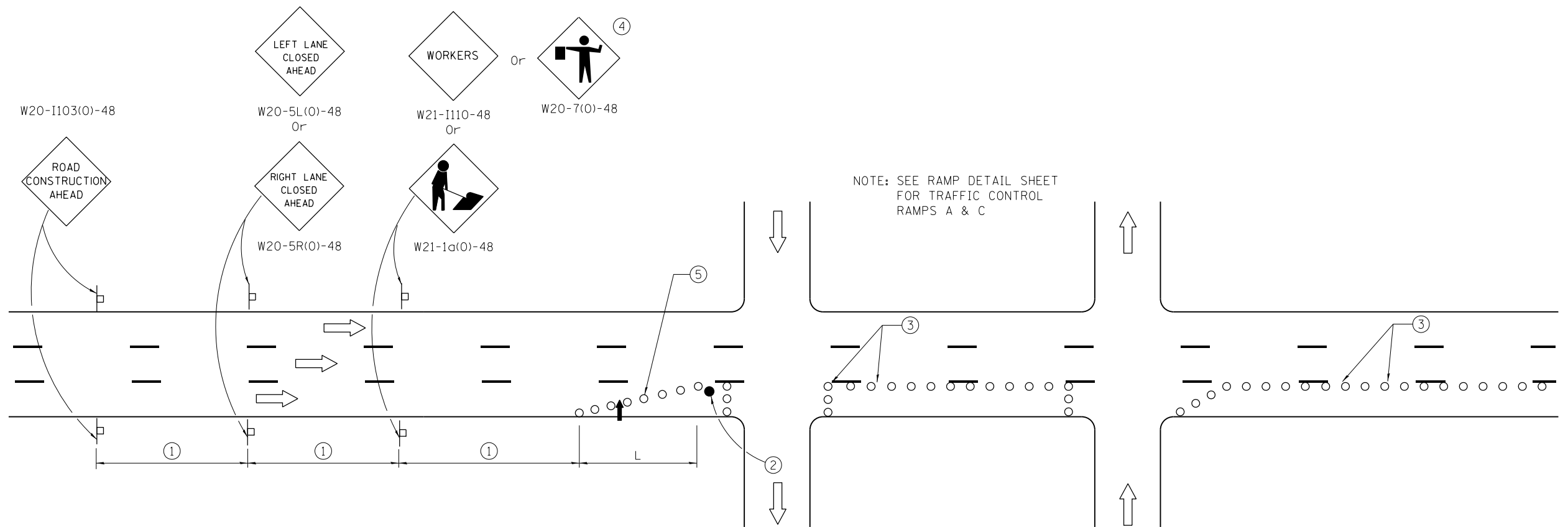
SCALE: 50 SHEET 1 OF 2 SHEETS STA. TO STA.

F.A.P. RTE.	SECTION	COUNTY	TOTAL SHEETS	SHEET NO.
610	(G1-4)	SANGAMON	24	18
CONTRACT NO. 72FOO			ILLINOIS FED. AID PROJECT	



NOTE: THIS SHEET TO BE USED FOR INFORMATION ONLY

FILE NAME = c:\pw\work\p1dot\sparksgw\10280145\0672f00-pave-mark.dgn	USER NAME = sparksgw	DESIGNED -	REVISED -	STATE OF ILLINOIS DEPARTMENT OF TRANSPORTATION	EXISTING PAVEMENT MARKINGS MACARTHUR BOULEVARD			F.A.P. RTE.	SECTION	COUNTY	TOTAL SHEETS	SHEET NO.
	PLOT SCALE = 100.0000' / 1" / 1" / 1"	CHECKED -	REVISED -					610	(G1-4)	SANGAMON	24	19
PLOT DATE = Dec-21-2011 03:01:21PM	DATE -	REVISED -	SCALE: 50		SHEET 2	OF 2 SHEETS	STA.	TO STA.	CONTRACT NO. 72FOO			
ILLINOIS FED. AID PROJECT												



SIGN SPACING	
Posted Speed	Sign Spacing
55	500' (150 m)
50-45	350' (100 m)
<45	200' (60 m)

SYMBOLS

- ↑ Arrow board
- Cone, drum or barricade
- ┆ Sign on portable or permanent support
- Flagger with traffic control sign.

- ① Refer to SIGN SPACING TABLE for distances.
- ② Required for speeds > 40 MPH
- ③ Cones at 25' (8 m) centers. When drums or Type I or Type II barricades are used, the interval between devices may be doubled.
- ④ Use flagger sign only when flagger is present.
- ⑤ Cones, drums or barricades at 20' (6 m) in taper.

GENERAL NOTES

This Standard is used where at any time, day or night, any vehicle, equipment, workers or their activities encroach on the pavement during shoulder operations or where construction requires lane closures in urban areas.

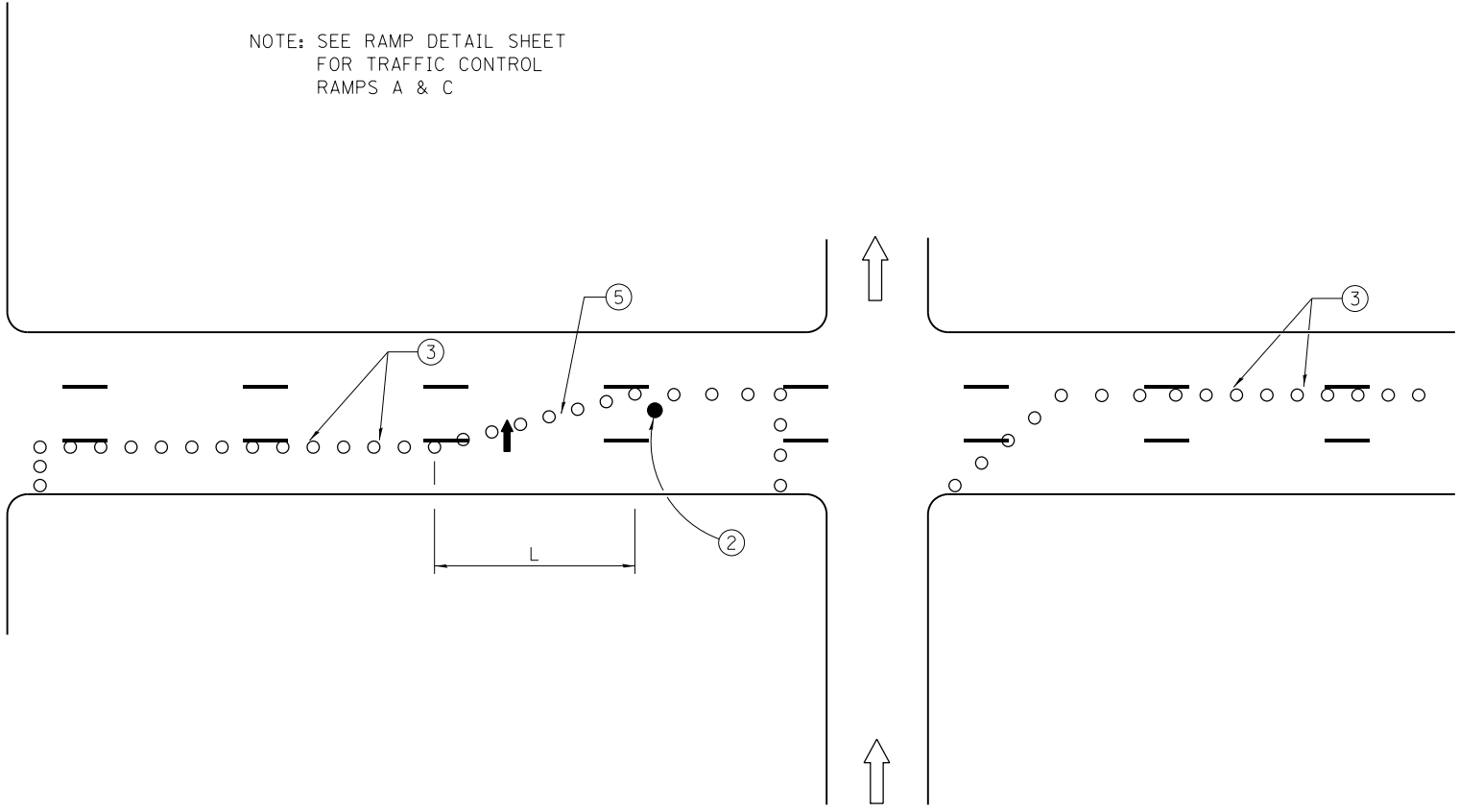
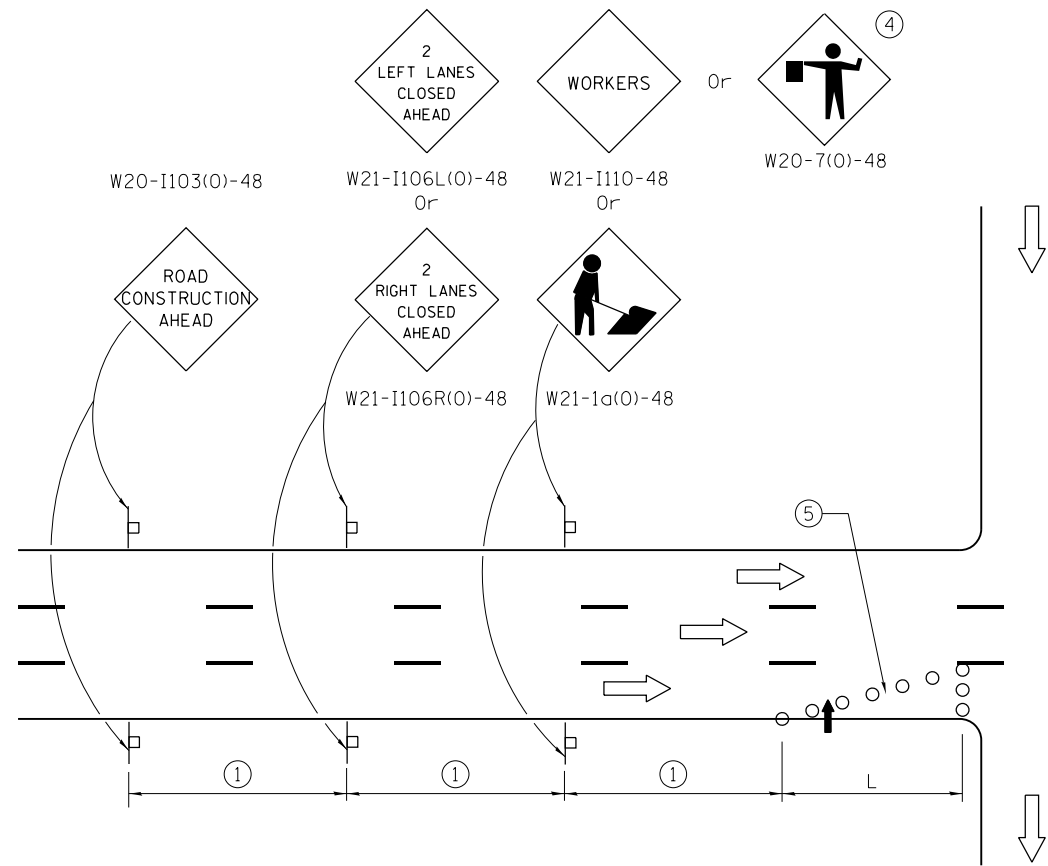
Calculate L as follows:

SPEED LIMIT	FORMULAS	
	English	(Metric)
40 mph (70 km/h) or less:	$L = \frac{WS^2}{60}$	$L = \frac{WS^2}{150}$
45 mph (80 km/h) or greater:	$L = (W)(S)$	$L = 0.65(W)(S)$

W = Width of offset in feet (meters).

S = Normal posted speed mph (km/h).

All dimensions are in inches (millimeters) unless otherwise shown.



NOTE: SEE RAMP DETAIL SHEET
FOR TRAFFIC CONTROL
RAMPS A & C

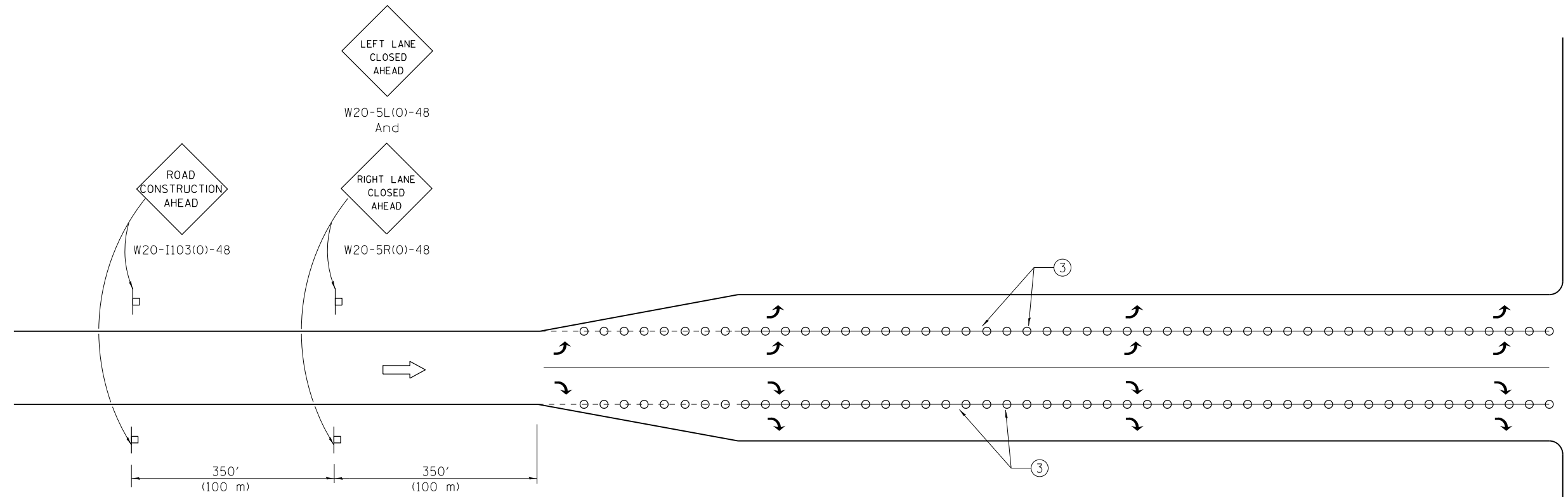
FILE NAME =	USER NAME = sparksgw	DESIGNED -	REVISED -
ei:\pwork\pwork\sparksgw\0280145\067200-sht-td.dgn		DRAWN -	REVISED -
	PLOT SCALE = 40.0000' / in.	CHECKED -	REVISED -
	PLOT DATE = Dec-21-2011 03:01:27PM	DATE -	REVISED -

**STATE OF ILLINOIS
DEPARTMENT OF TRANSPORTATION**

**TRAFFIC CONTROL SHEETS
701601 SPECIAL**

SCALE: NTS SHEET 2 OF 3 SHEETS STA. TO STA.

F.A.P. RTE.	SECTION	COUNTY	TOTAL SHEETS	SHEET NO.
610	(G)I-4	SANGAMON	24	21
CONTRACT NO. 72FOO			ILLINOIS FED. AID PROJECT	



RAMP DETAIL
FOR RAMPS "A" & "C"

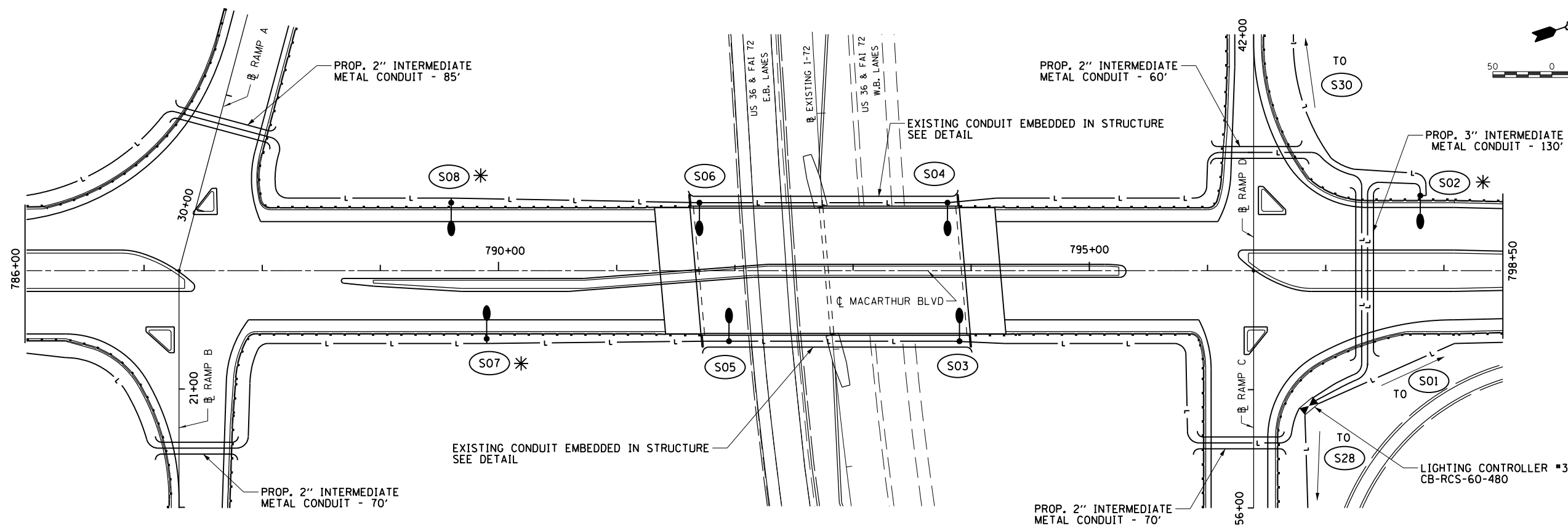
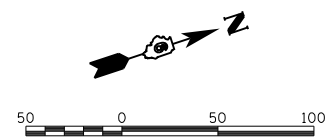
FILE NAME =	USER NAME = sparksgw	DESIGNED -	REVISED -
c:\pwork\pwork\sparksgw\0280145\067200-sht-td.dgn		DRAWN -	REVISED -
	PLOT SCALE = 40.0000' / in.	CHECKED -	REVISED -
	PLOT DATE = Dec-21-2011 03:01:28PM	DATE -	REVISED -

STATE OF ILLINOIS
DEPARTMENT OF TRANSPORTATION

TRAFFIC CONTROL SHEETS
701601 SPECIAL

SCALE: NTS SHEET 3 OF 3 SHEETS STA. TO STA.

F.A.P. RTE.	SECTION	COUNTY	TOTAL SHEETS	SHEET NO.
610	(GI)-4	SANGAMON	24	22
ILLINOIS FED. AID PROJECT			CONTRACT NO. 72FOO	



LEGEND

- LIGHT POLE, STEEL, 45' M.H. TENON MOUNT
- CONDUIT PUSHED, INTERMEDIATE METAL (LENGTH AS SHOWN)
- UNIT DUCT (SIZE AS NOTED)
- LIGHTING CONTROLLER
- CITY FIXTURE REFERENCE NUMBER (SEE TABLE)
- STATE FIXTURE REFERENCE NUMBER (SEE TABLE)
- CONCRETE SPECIAL FOUNDATION - 8' DEPTH

THIS SHEET TO BE USED FOR INFORMATION ONLY

FIXTURE REF. NO.	STATION	OFFSET	FIXTURE REF. NO.	STATION	OFFSET
S02	797+80	63.5' LT	C35	827+30	66.0' RT
S04	793+80	STRUCT.	C34	827+70	76.1' LT
S03	793+90	STRUCT.	C37	824+70	66.0' RT
S06	791+70	STRUCT.	C36	825+10	78.0' LT
S05	791+95	STRUCT.	C35	820+80	91.2' RT
S08	789+60	57.5' LT	C38	822+50	100.0' LT
S07	789+90	57.5' RT	C41	818+06	78.0' RT
S10	785+40	55.7' LT	C40	818+15	66.0' LT
S09	785+90	63.5' RT	C43	815+32	67.0' RT
S11	783+70	63.9' RT	C42	815+20	66.0' LT
S12	782+80	65.0' LT	C45	812+58	62.3' RT
S13	781+45	63.7' RT	C44	812+25	61.6' LT
S14	780+10	63.0' LT	C47	809+84	57.8' RT
S15	778+75	63.0' RT	C46	809+30	60.0' LT
S16	777+40	63.0' LT	C49	807+10	50.0' RT
S17	776+05	63.0' RT	C48	806+25	60.0' LT
S18	774+70	63.0' LT	C51	804+10	48.0' RT
S19	773+35	63.0' RT	C50	803+30	60.0' LT
S20	772+00	63.0' LT	C53	801+05	STRUCT.
S21	770+83	63.0' RT	C52	800+25	STRUCT.
			S01	798+60	55.3' RT

